

40' SERIES



Hedge Road Landing
Jackson's Point

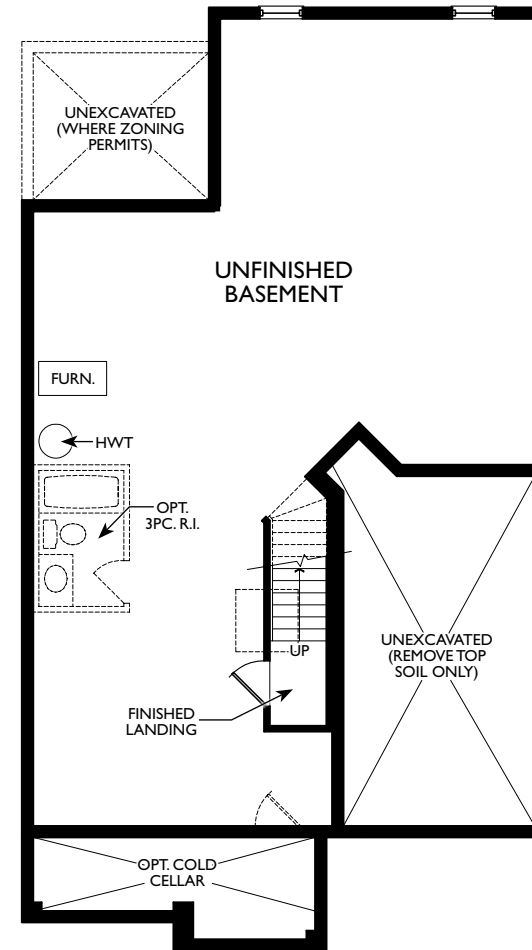


Elevation A

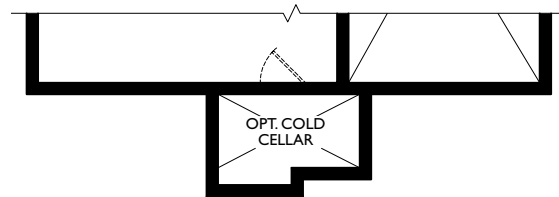
The Bishop
1,112 square feet

The Bishop

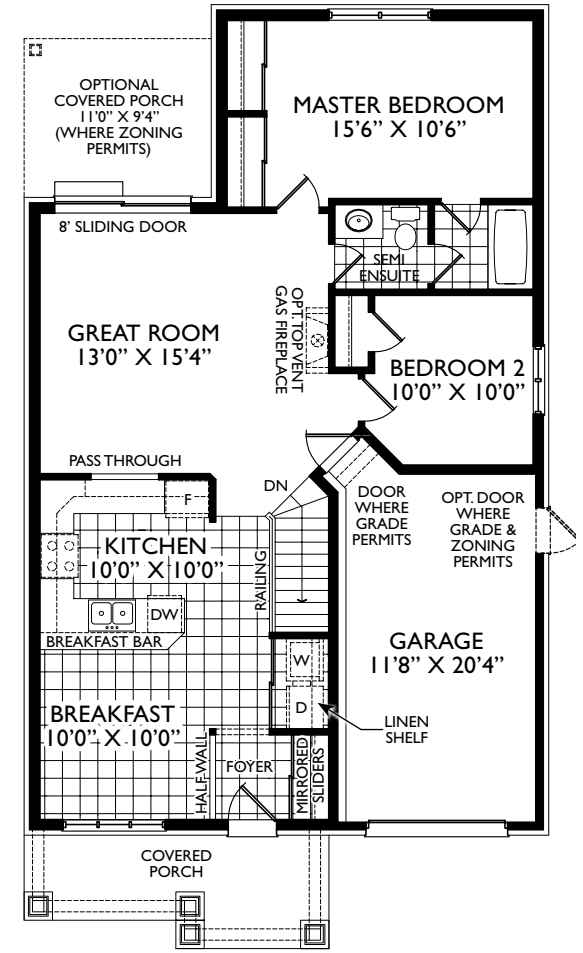
1,112 square feet



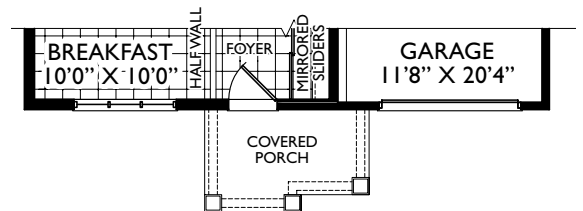
BASEMENT PLAN EL. 'A'



PARTIAL BASEMENT PLAN EL. 'B' & 'C'



GROUND PLAN EL. 'A'



PARTIAL GROUND FLOOR PLAN EL. 'B' & 'C'



40' SERIES



Hedge Road Landing
Jackson's Point



Elevation A

The Blackbird
1,241 square feet

The Blackbird

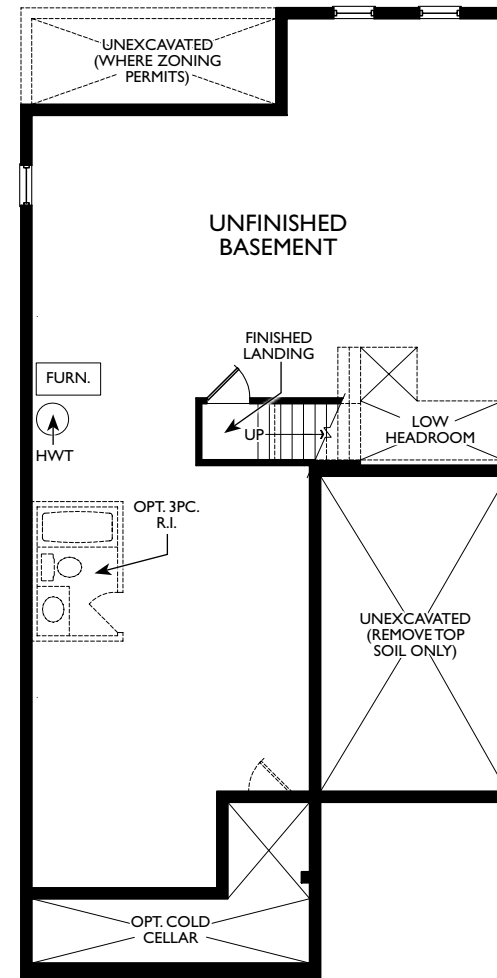
1,241 square feet



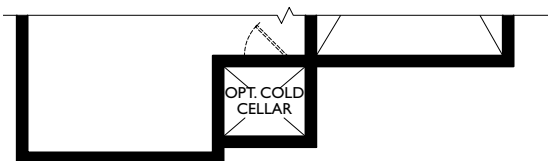
Elevation B



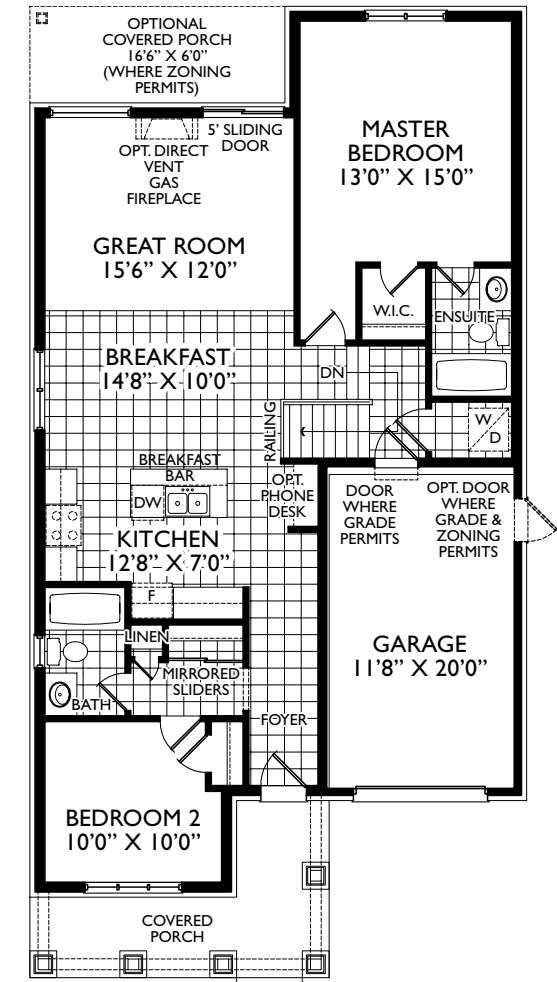
Elevation C



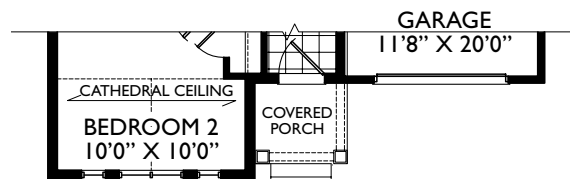
BASEMENT PLAN EL. 'A'



PARTIAL BASEMENT PLAN EL. 'B' & 'C'



GROUND PLAN EL. 'A'



PARTIAL GROUND FLOOR PLAN EL. 'B' & 'C'



40' SERIES



Hedge Road Landing
Jackson's Point

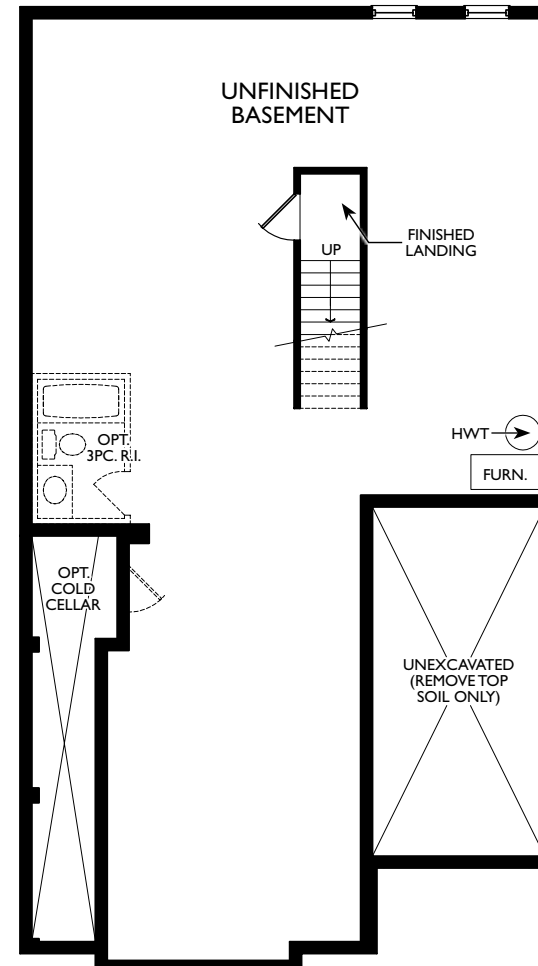


Elevation A

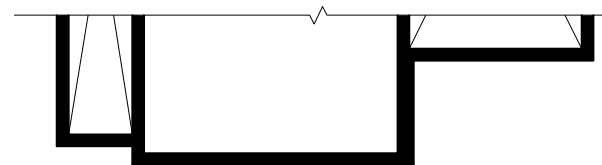
The Dalton
1,303 square feet

The Dalton

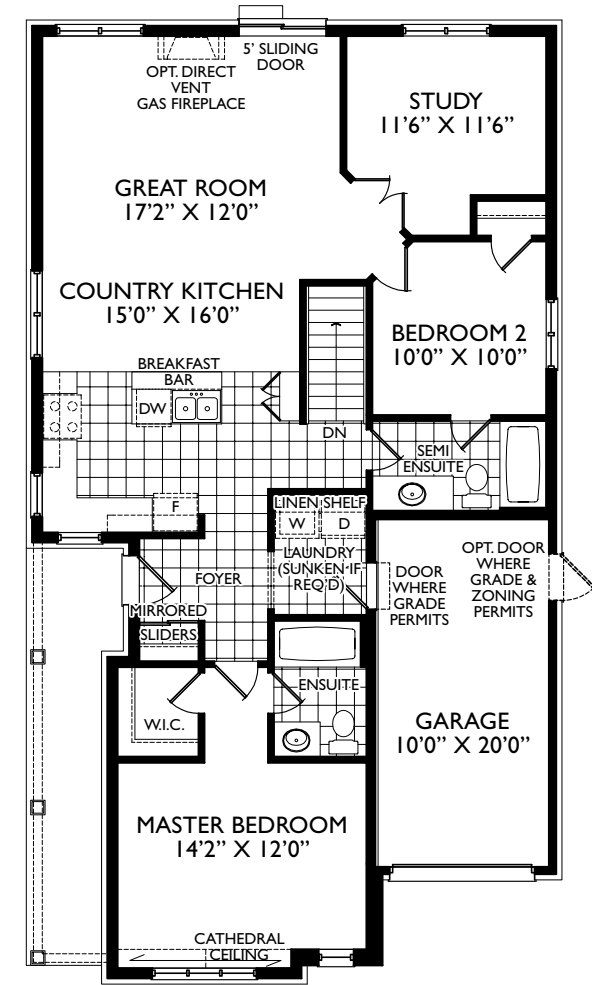
1,303 square feet



BASEMENT PLAN EL. 'A'



PARTIAL BASEMENT PLAN EL. 'B' & 'C'



GROUND PLAN EL. 'A'



PARTIAL GROUND FLOOR PLAN EL. 'B' & 'C'



40' SERIES



Hedge Road Landing
Jackson's Point



Elevation A

The Duncan
1,514 square feet with loft

The Duncan

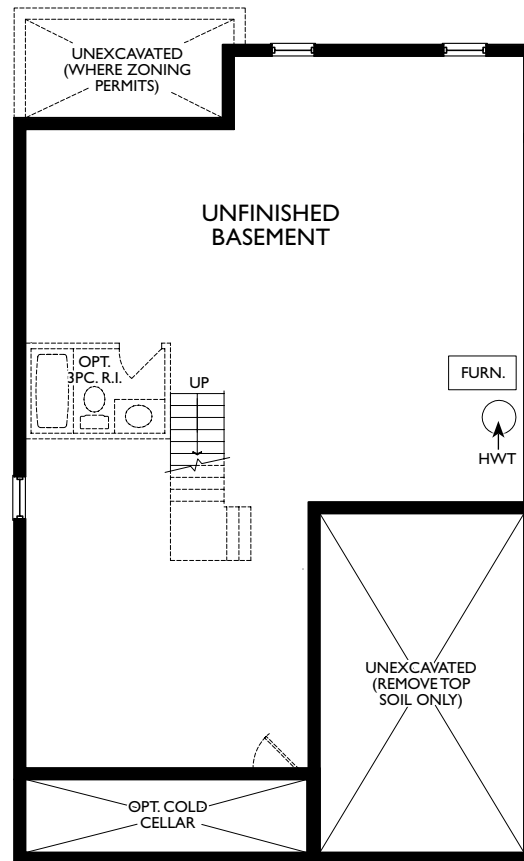
1,514 square feet with loft



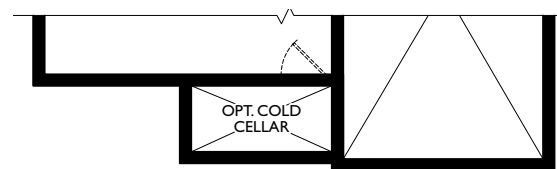
Elevation B (1,518 sq/ft)



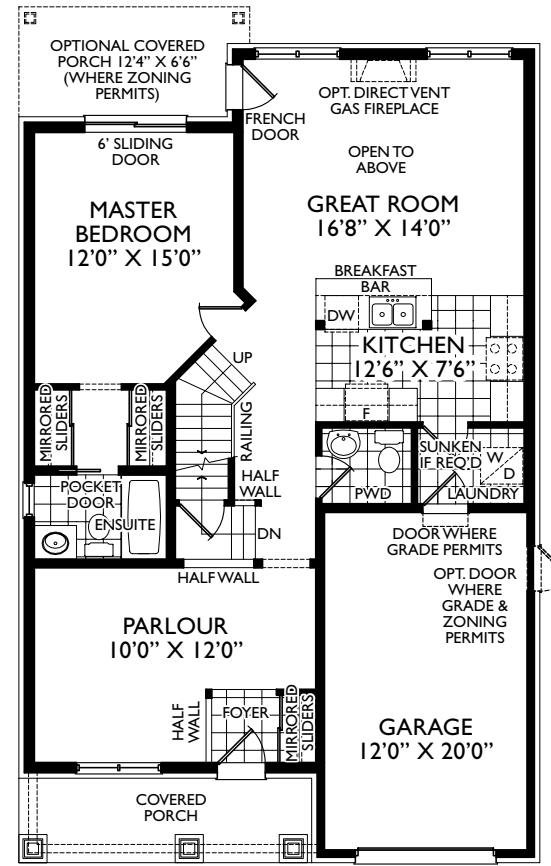
Elevation C (1,507 sq/ft)



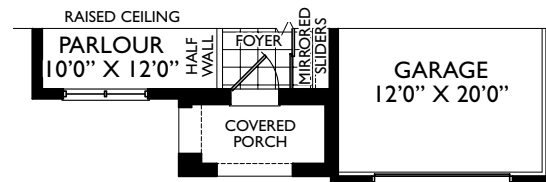
BASEMENT PLAN EL. 'A'



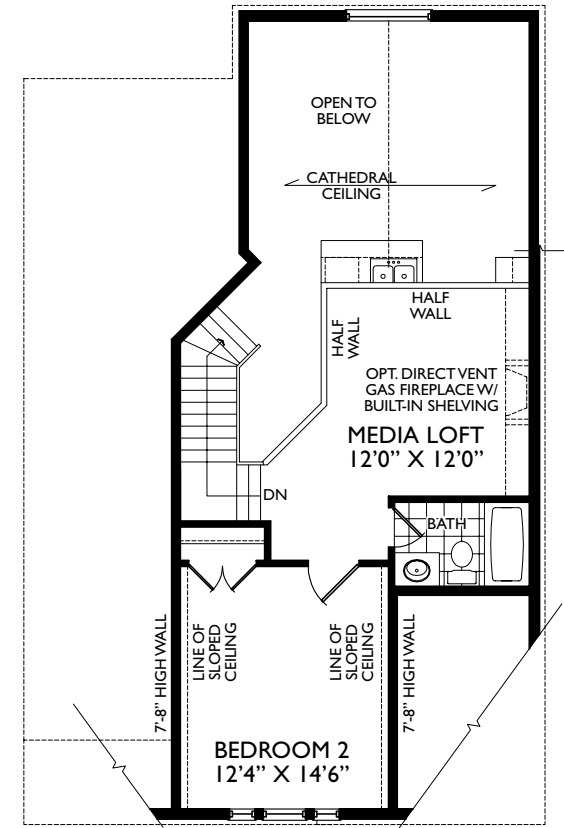
PARTIAL BASEMENT PLAN EL. 'B' & 'C'



GROUND PLAN EL. 'A'



PARTIAL GROUND FLOOR PLAN EL. 'B' & 'C'



LOFT FLOOR PLAN EL. 'A'



PARTIAL LOFT FLOOR PLAN EL. 'B' & 'C'



40' SERIES



Hedge Road Landing
Jackson's Point



Elevation C

The Jackson

1,260 square feet (1,717 sq/ft with loft)

The Jackson

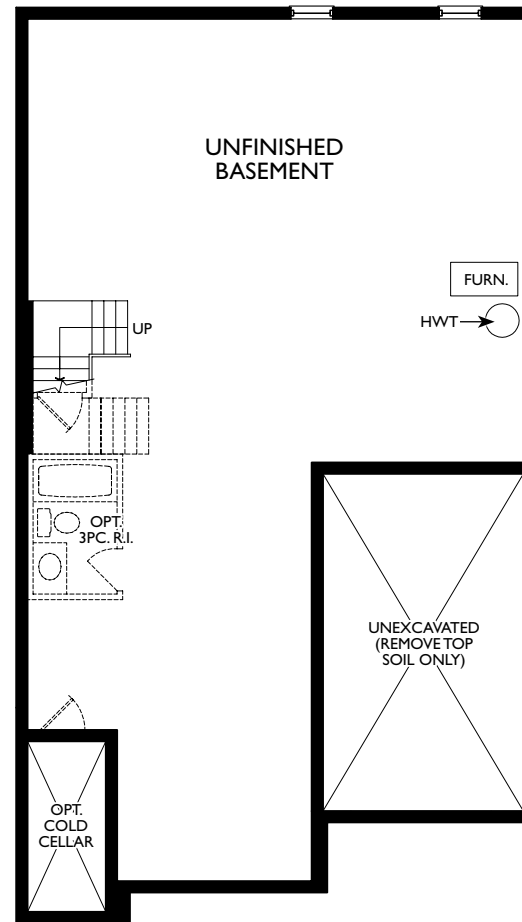
1,260 square feet



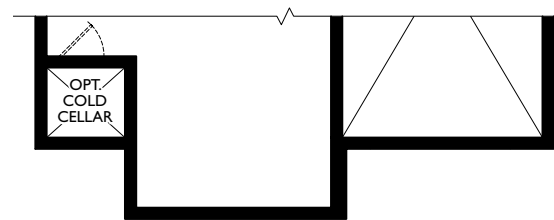
Elevation A (with opt. loft 1,719 sq/ft)



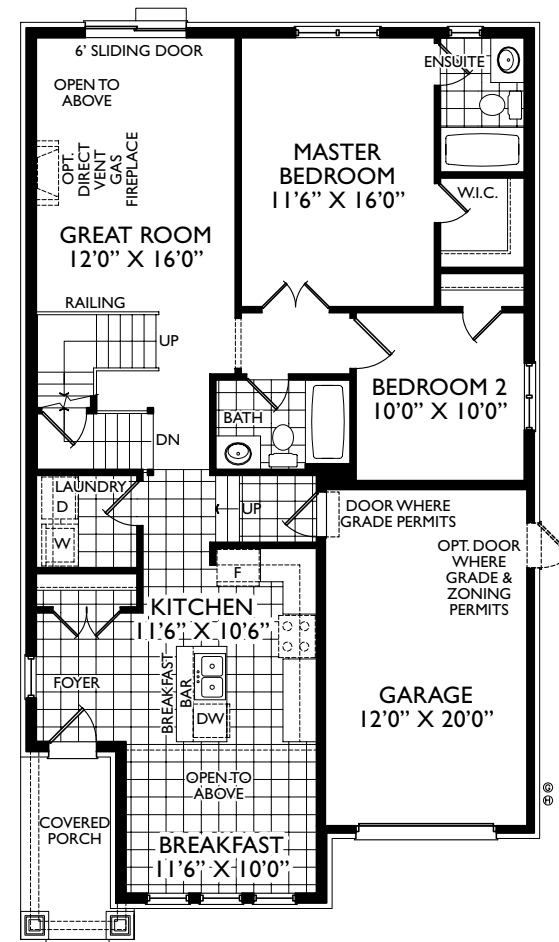
Elevation B (with opt. loft 1,724 sq/ft)



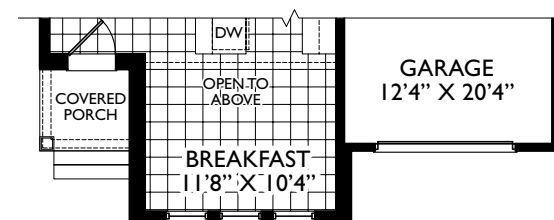
BASEMENT PLAN EL. 'A'



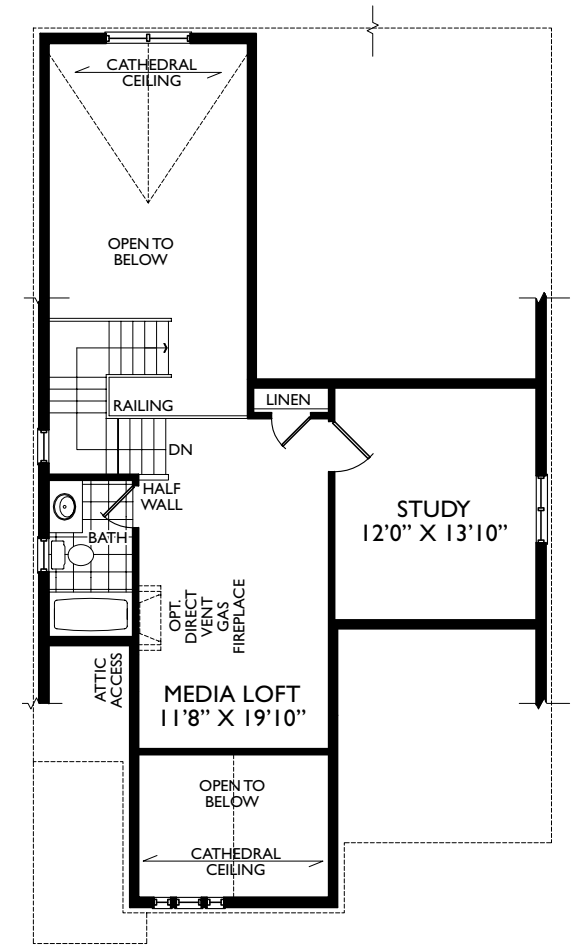
PARTIAL BASEMENT PLAN EL. 'B' & 'C'



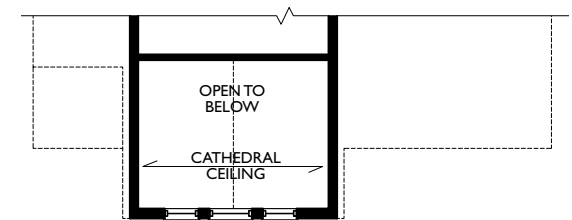
GROUND PLAN EL. 'A'



PARTIAL GROUND FLOOR PLAN EL. 'B' & 'C'



LOFT FLOOR PLAN EL. 'A'



PARTIAL LOFT FLOOR PLAN EL. 'B' & 'C'



40' SERIES



Hedge Road Landing
Jackson's Point



Elevation B

The Matthew
1,733 square feet with loft

The Matthew

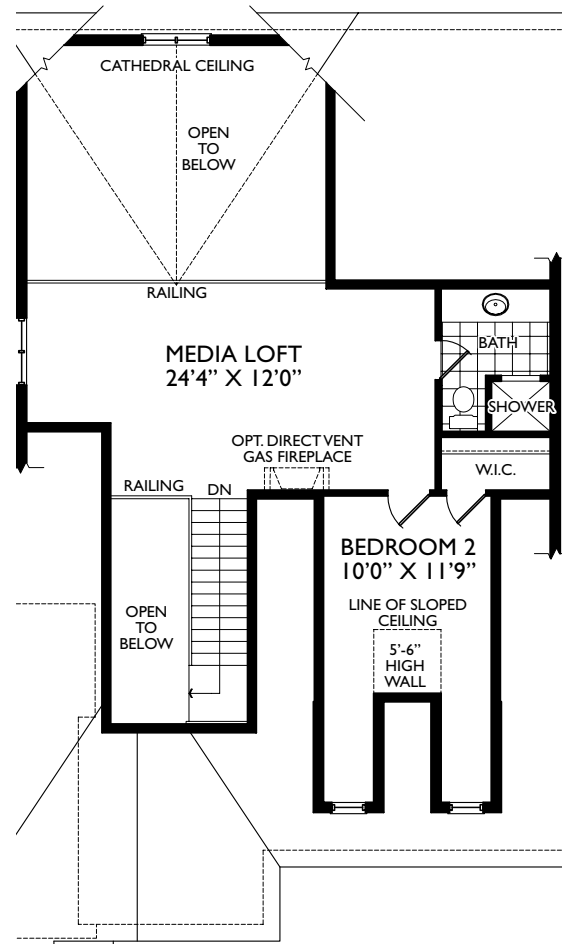
1,733 square feet with loft



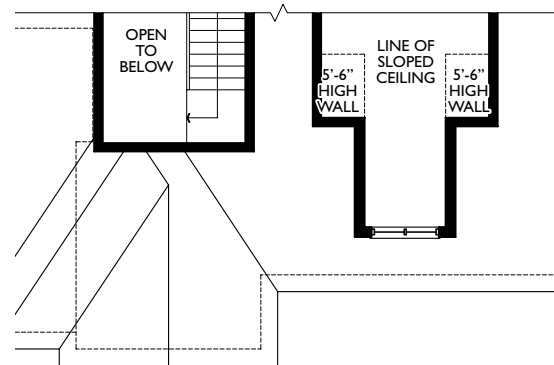
Elevation A



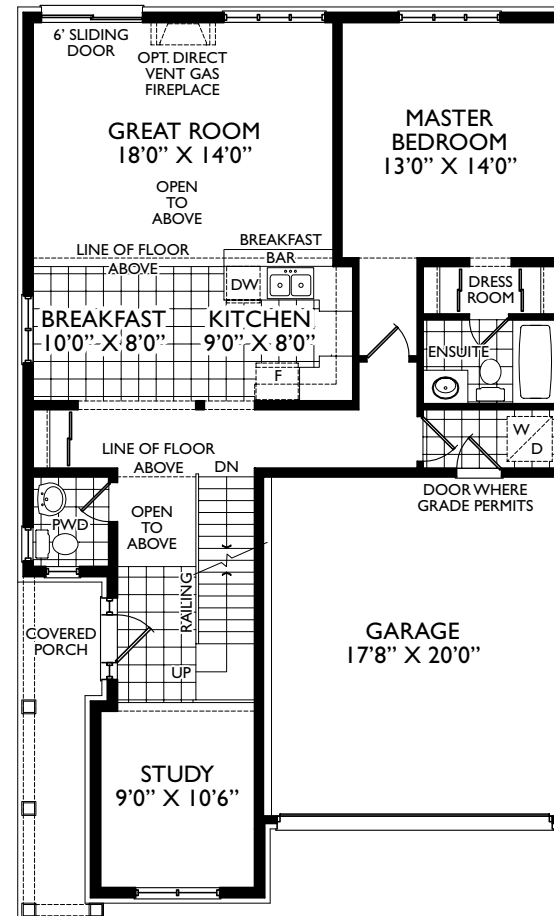
Elevation C (1,725 square feet)



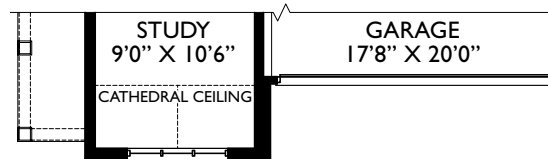
LOFT FLOOR PLAN EL. 'A'



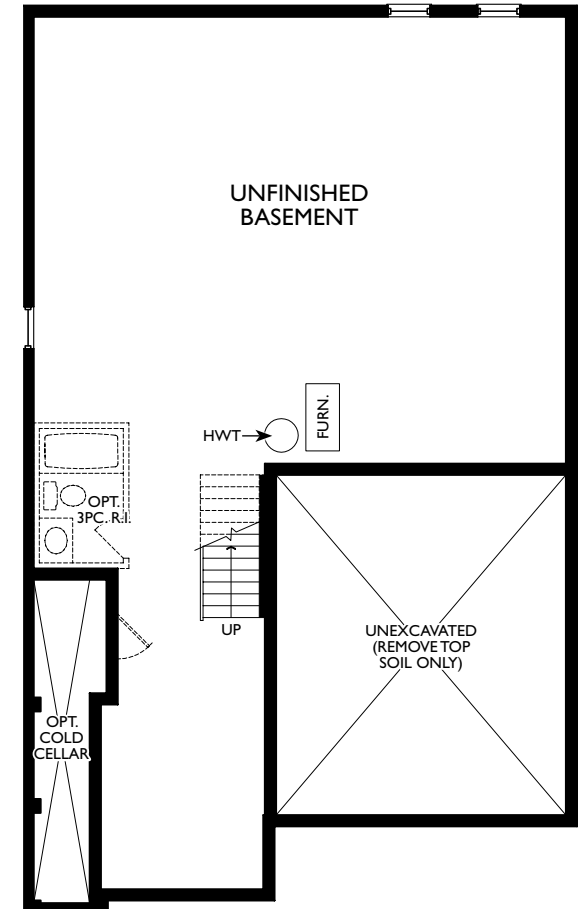
PARTIAL LOFT FLOOR PLAN EL. 'B' & 'C'



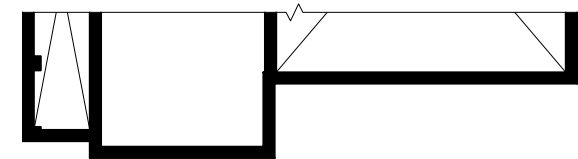
GROUND FLOOR PLAN EL. 'A'



PARTIAL GROUND FLOOR PLAN EL. 'B' & 'C'



BASEMENT PLAN EL. 'A'



PARTIAL BASEMENT PLAN EL. 'B' & 'C'



40' SERIES



Hedge Road Landing
Jackson's Point



Elevation C

The Daniel
1,857 square feet with loft

The Daniel

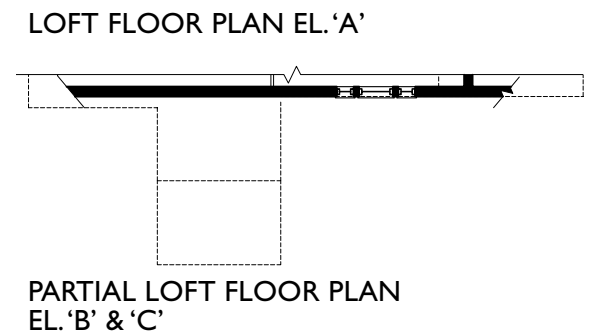
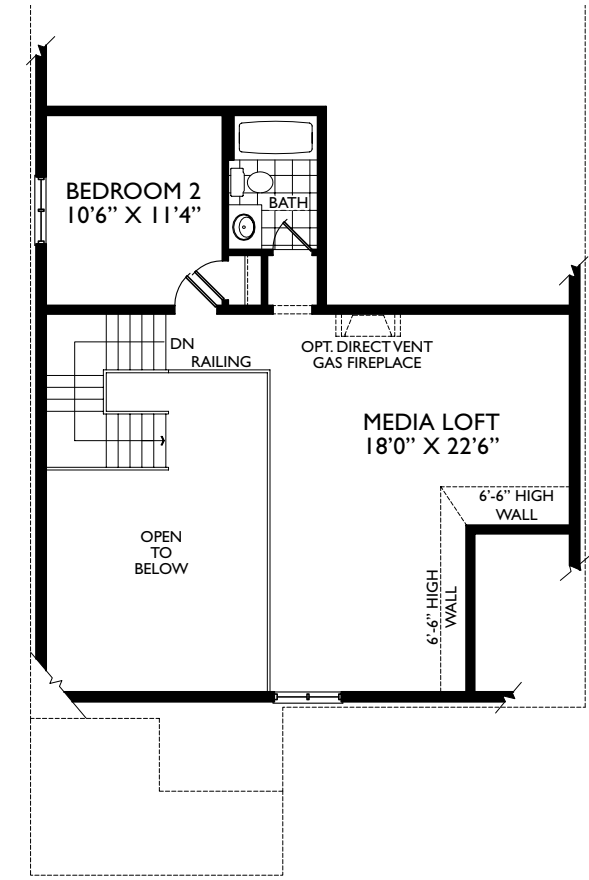
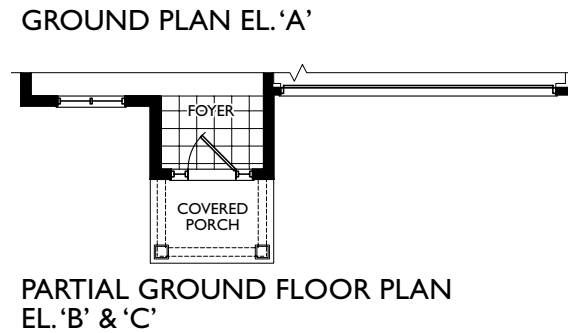
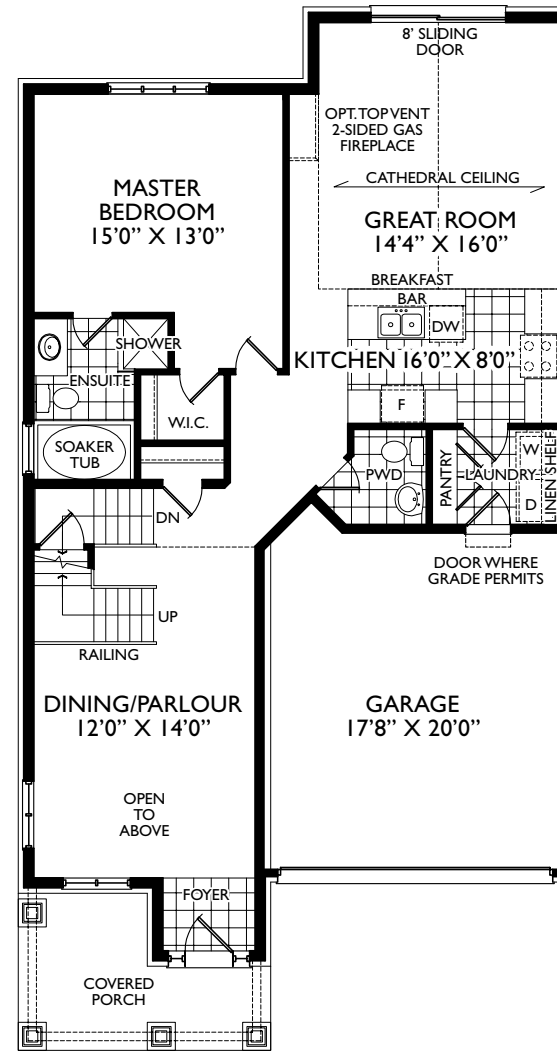
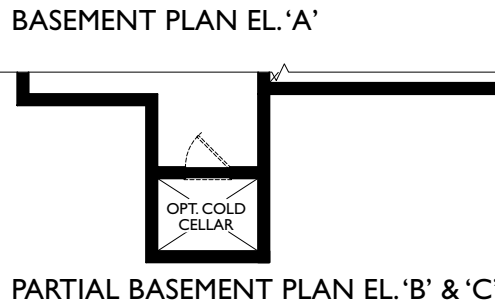
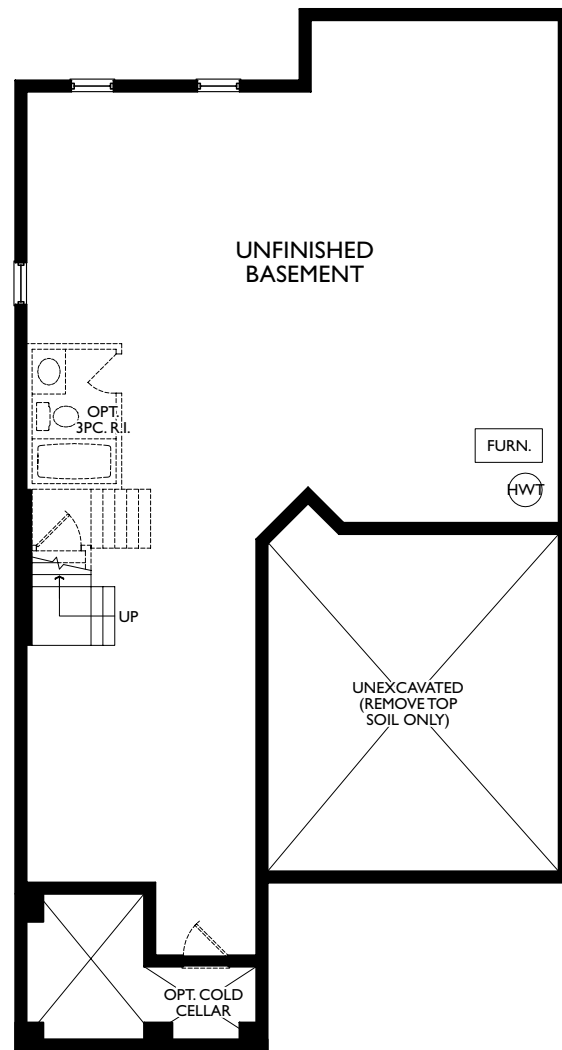
1,857 square feet with loft



Elevation A



Elevation B (1,869 square feet)



50' SERIES



Hedge Road Landing
Jackson's Point

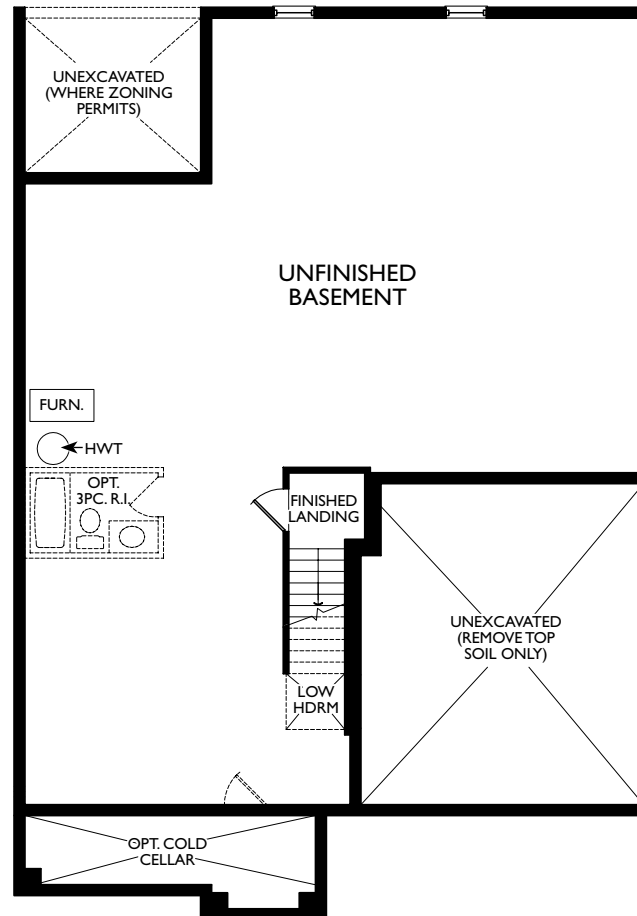


Elevation A

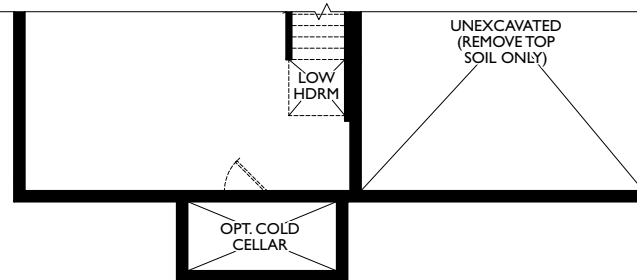
The McRae
1,517 square feet

The McRae

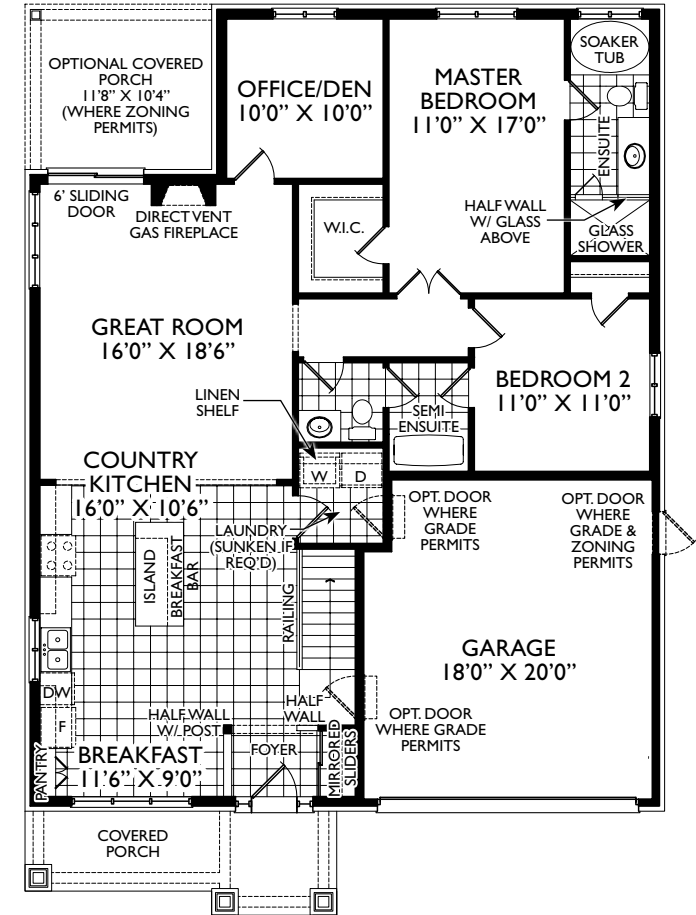
1,517 square feet



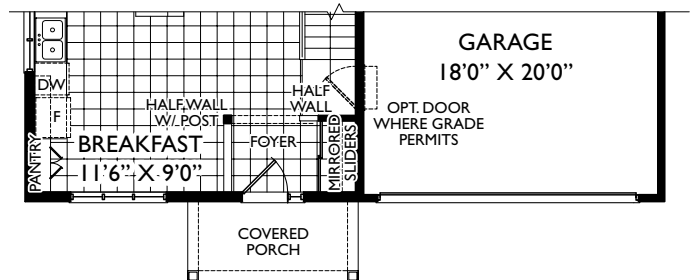
BASEMENT PLAN EL. 'A'



PARTIAL BASEMENT PLAN EL. 'B'



GROUND PLAN EL. 'A'



PARTIAL GROUND FLOOR PLAN EL. 'B' & 'C'



50' SERIES



Hedge Road Landing
Jackson's Point



Elevation B

The Mossington
1,657 square feet (2,107 sq/ft with loft)

50' SERIES



Hedge Road Landing
Jackson's Point



Elevation B

The Raines

1,773 square feet (Elevation 'B' 2,380 sq/ft with loft)

The Raines

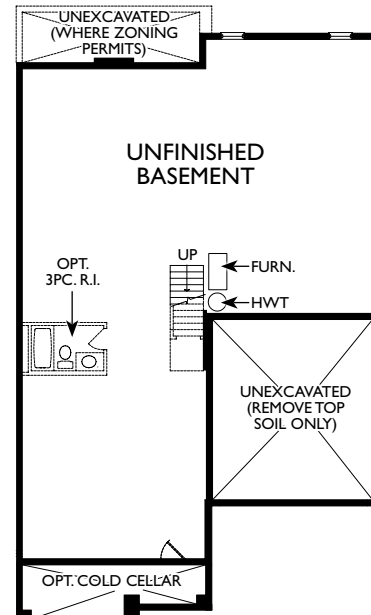
1,773 square feet



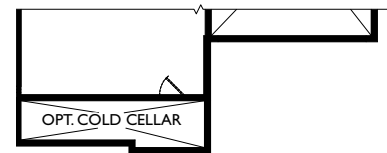
Elevation A (with opt. loft 2,369 sq/ft)



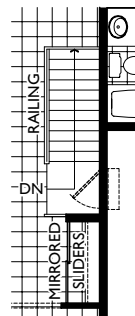
Elevation C 1,775 sq/ft
(with opt. loft 2,371 sq/ft)



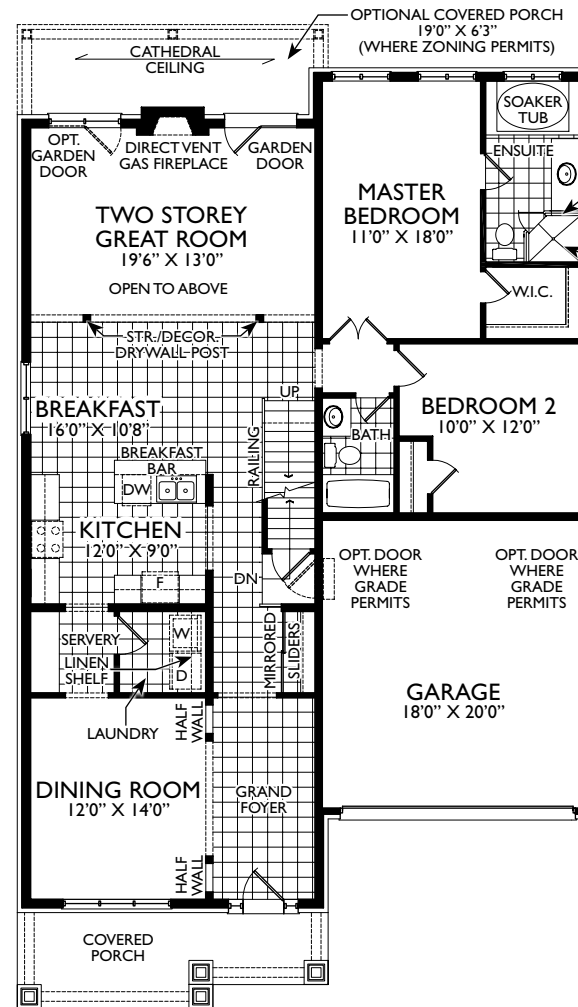
BASEMENT PLAN EL. 'A'



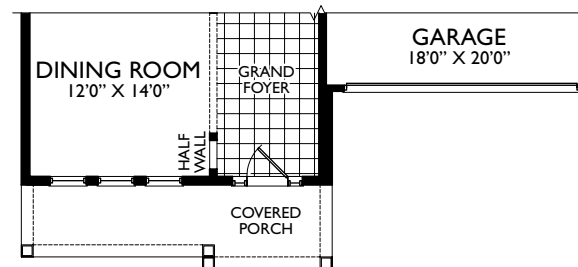
PARTIAL BASEMENT PLAN EL. 'B' & 'C'



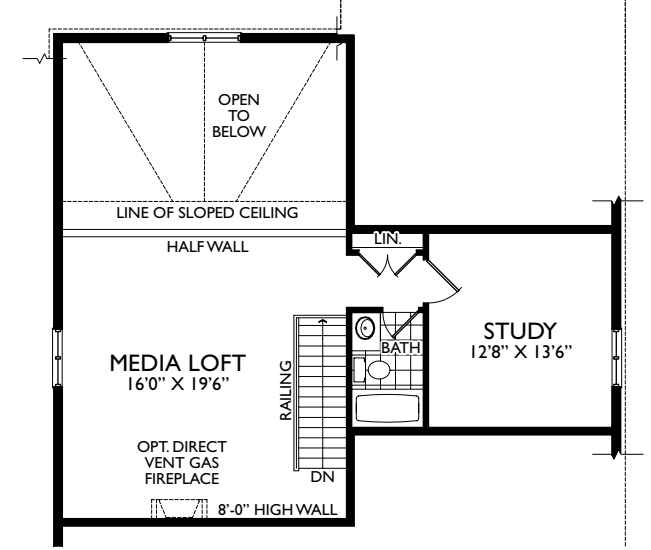
STAIRS FOR NON LOFT PLAN EL. 'A', 'B', & 'C'



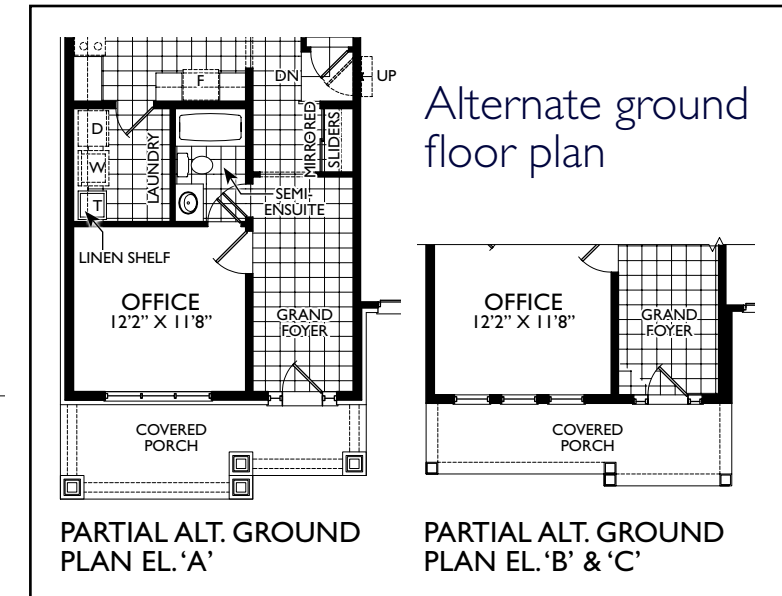
GROUND FLOOR PLAN EL. 'A'



PARTIAL GROUND FLOOR PLAN EL. 'A'



PARTIAL LOFT FLOOR PLAN EL. 'A', 'B', & 'C'



PARTIAL ALT. GROUND PLAN EL. 'A'

PARTIAL ALT. GROUND PLAN EL. 'B' & 'C'



50' SERIES



Hedge Road Landing
Jackson's Point



Elevation C

The Simcoe
2,097 square feet with loft

50' SERIES



Hedge Road Landing
Jackson's Point



Elevation C

The Wheeler

1,795 square feet (2,454 sq/ft with loft)

