

EXISTING RESIDENTIAL



EXISTING RESIDENTIAL

EXISTING RESIDENTIAL

GEORGE MCKENZIE COURT

WESTON ROAD

EXISTING RESIDENTIAL



EXISTING RESIDENTIAL

EXISTING RESIDENTIAL

# SITE PLAN

## STERLING ESTATES ON THE HUMBER

Lot sizes are rounded to the nearest half foot, may vary and are subject to change without notice. Map is not to scale. All illustrations are artist's concept. E.&O.E. November 2020.



# The Marigold

2641 sf + 532 sf\*

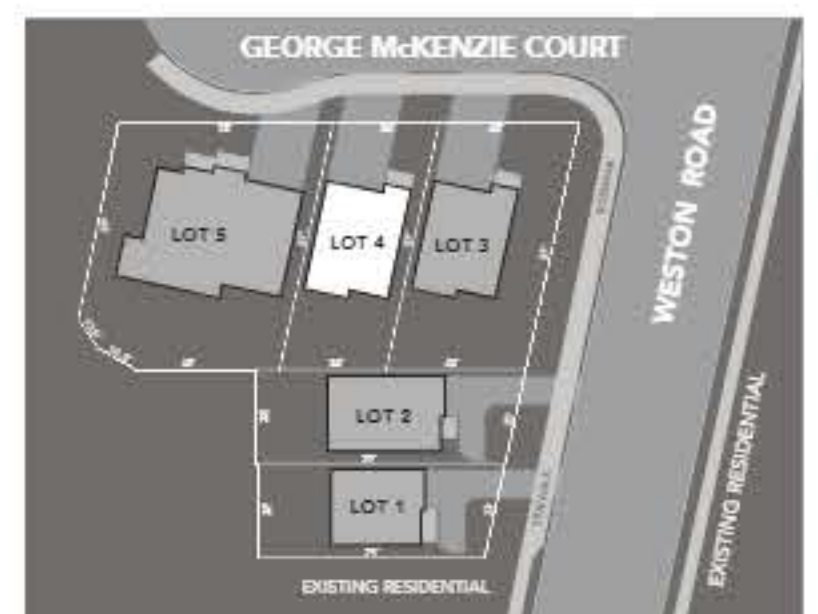
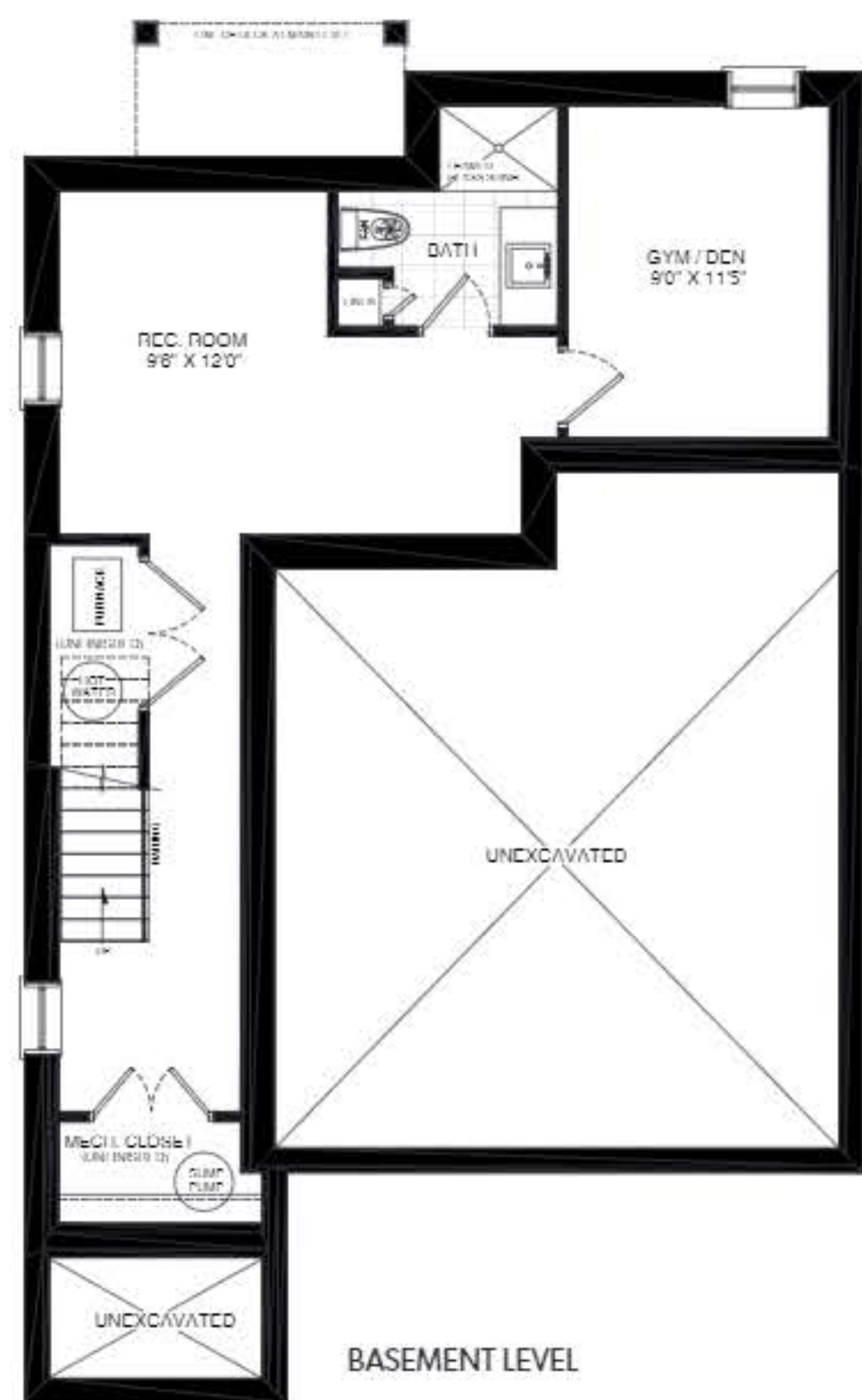
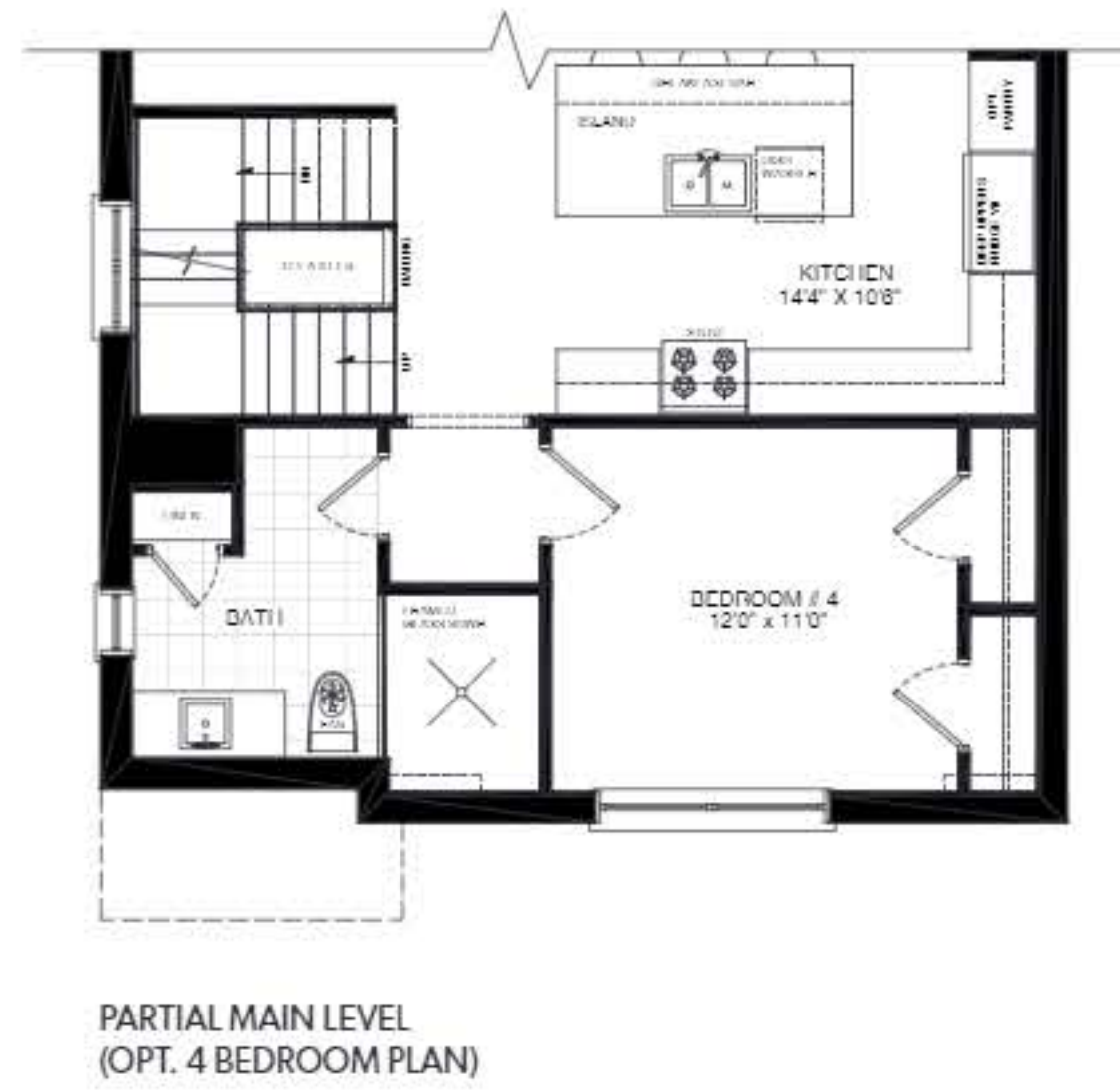
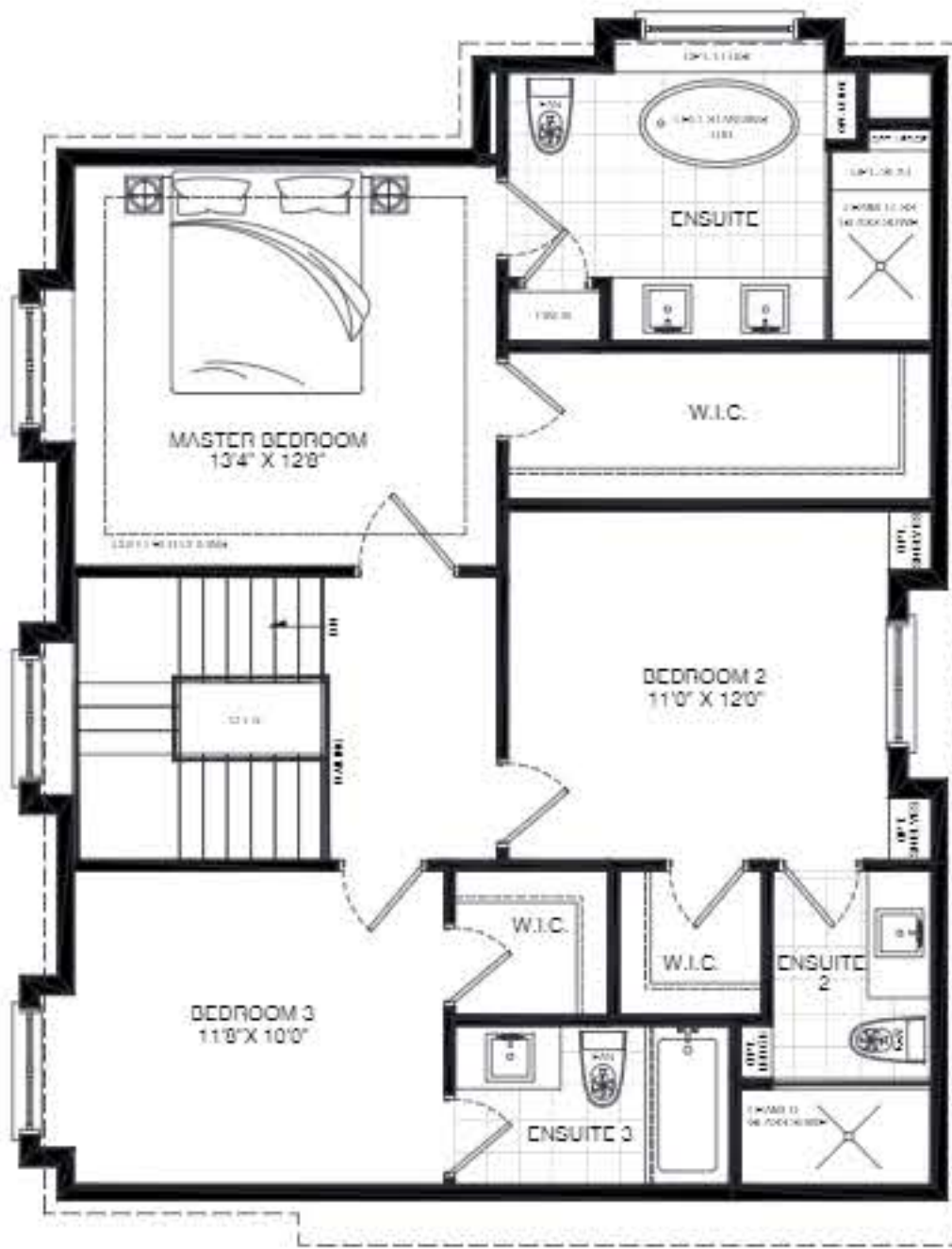
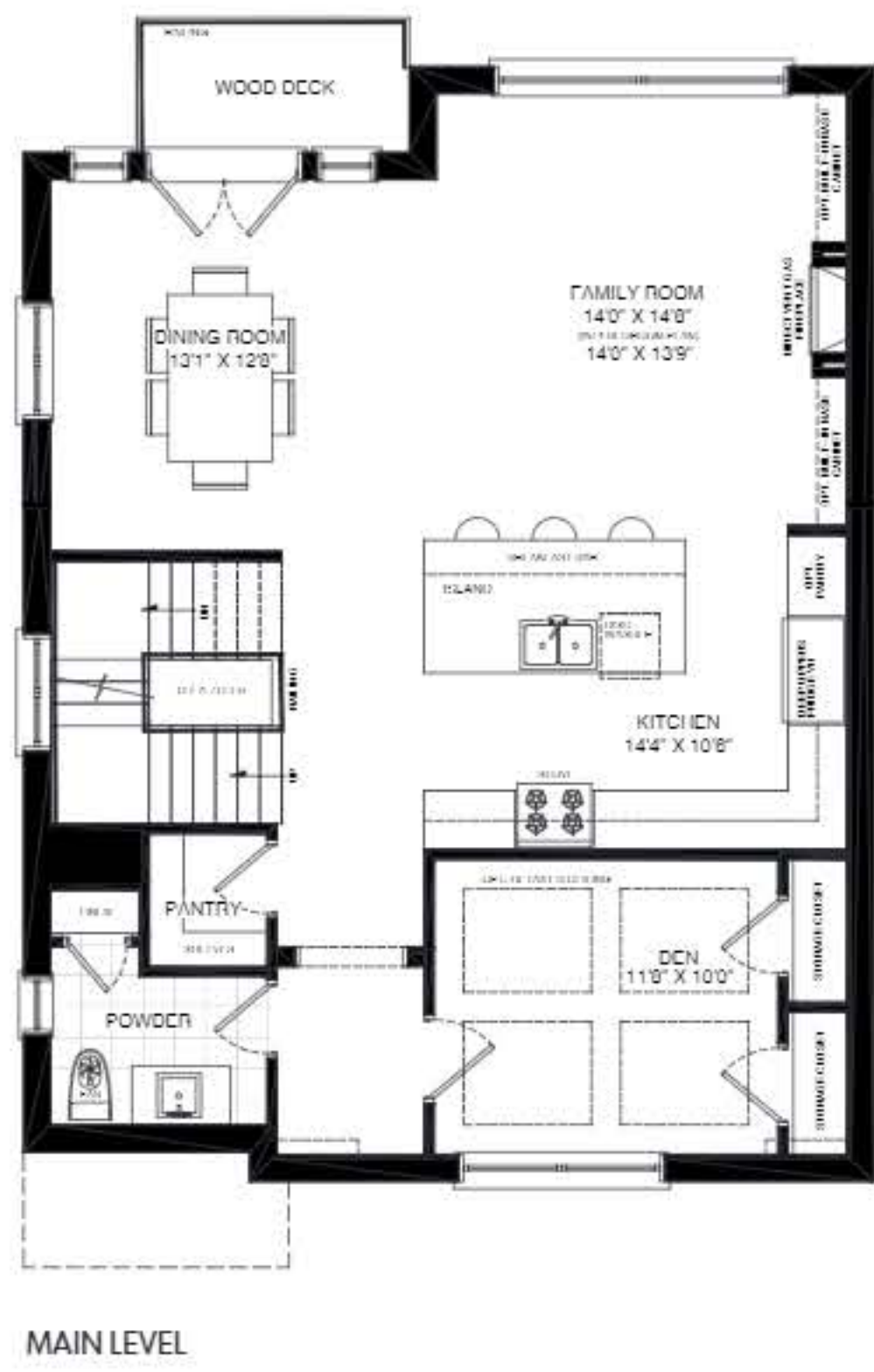
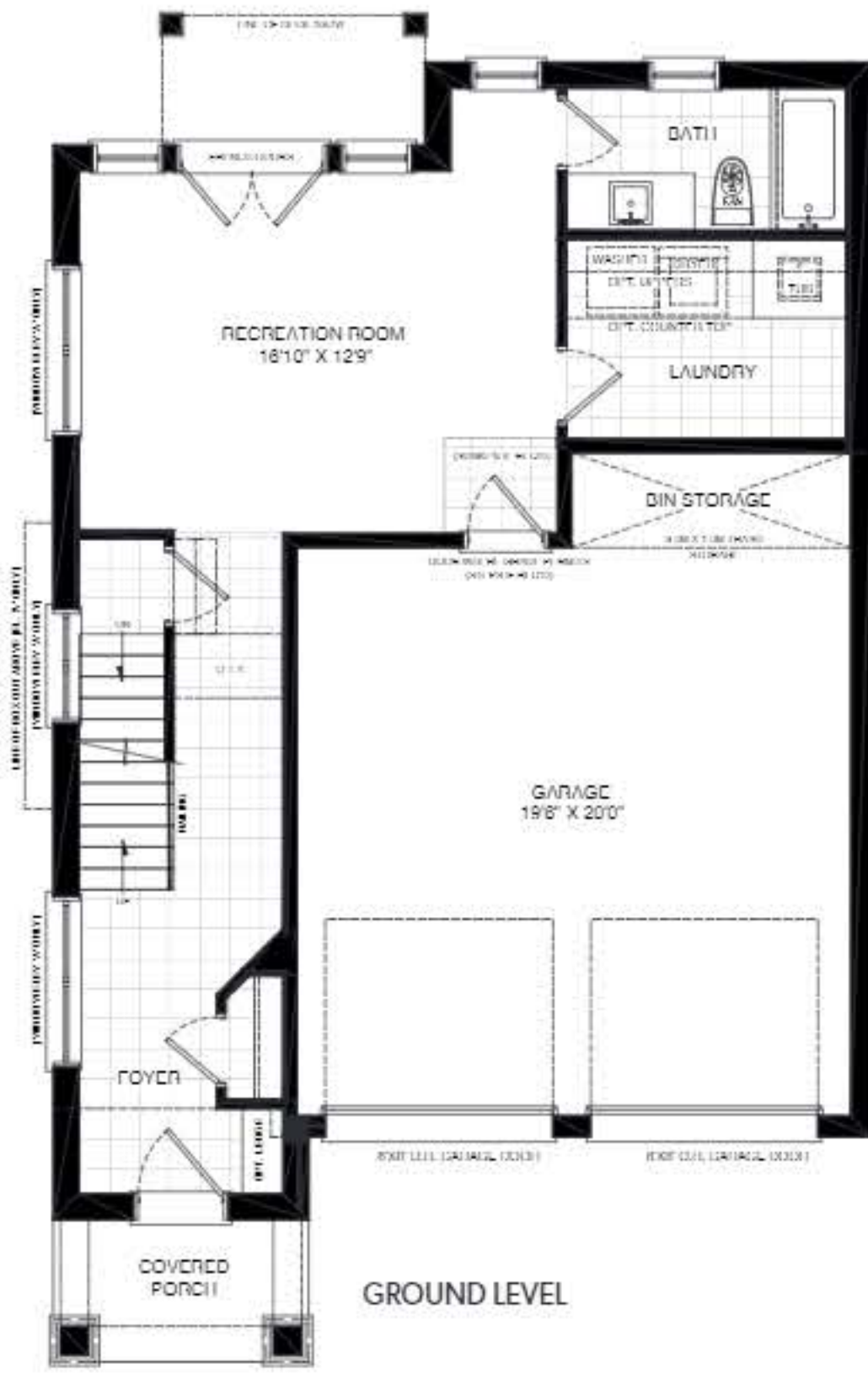
Total 3173 sf

\*finished basement

RIVERSIDE LUXURY

STERLING ESTATES

ON THE HUBBER



Finished basement does not include mechanical and storage rooms. Room sizes shown are approximate and measured in accordance with accepted industry methods, standards and practices. Square footage includes all finished interior space and enclosed open space belonging to each unit. Plans and specifications are subject to change without notice and subject to individual site conditions. All renderings are artist's concepts. E & O. E. January 2021.



# The Elderberry

2090 sf + 408 sf\*

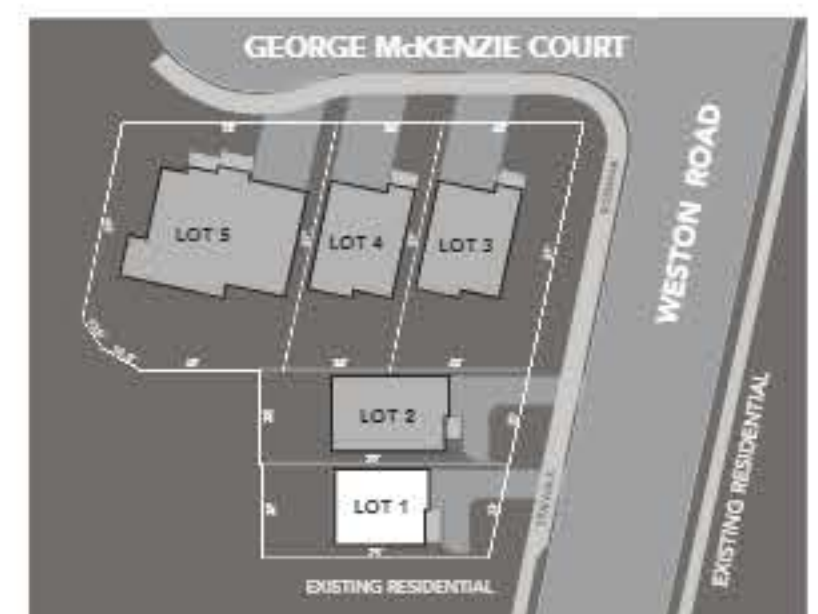
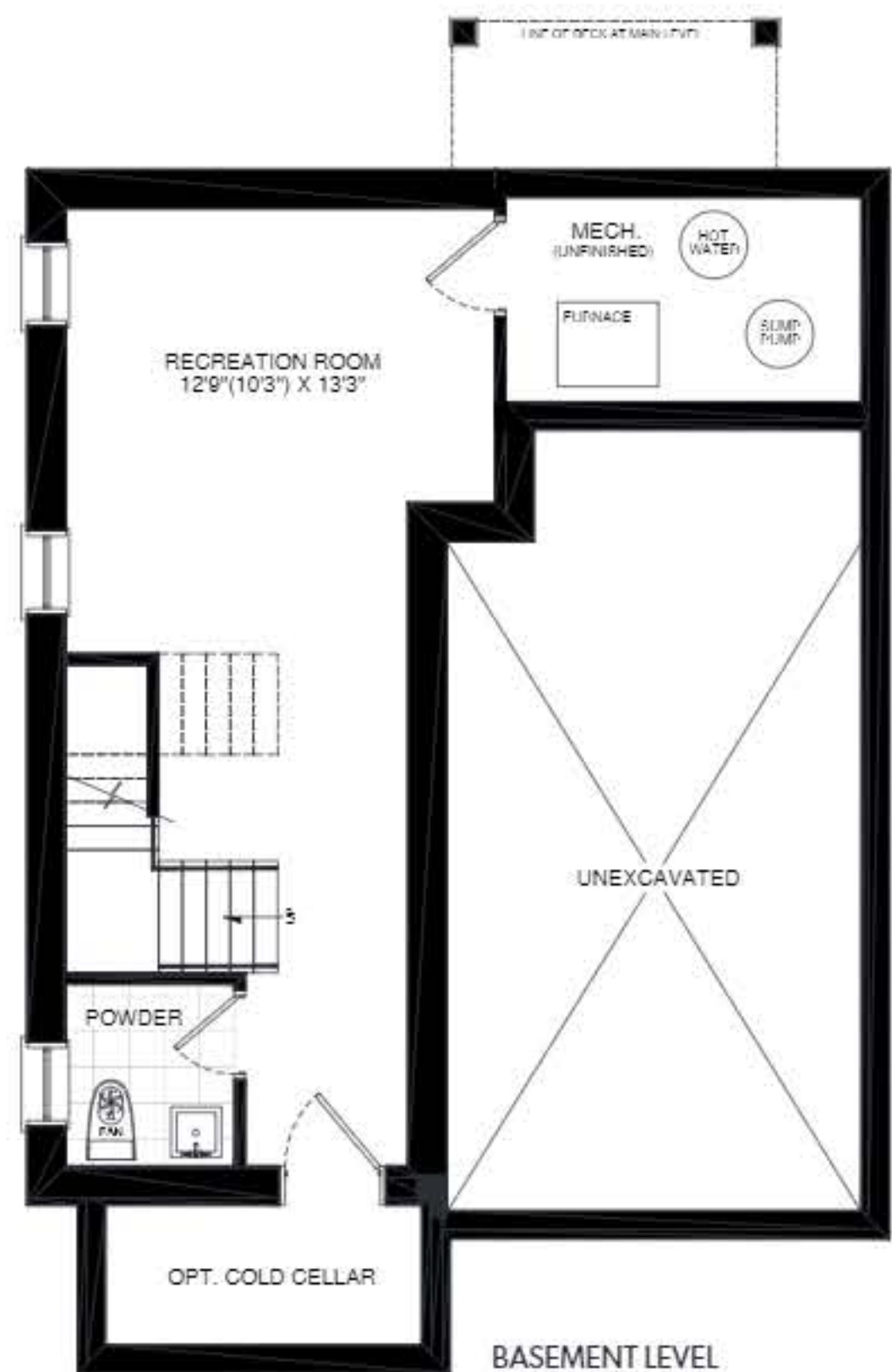
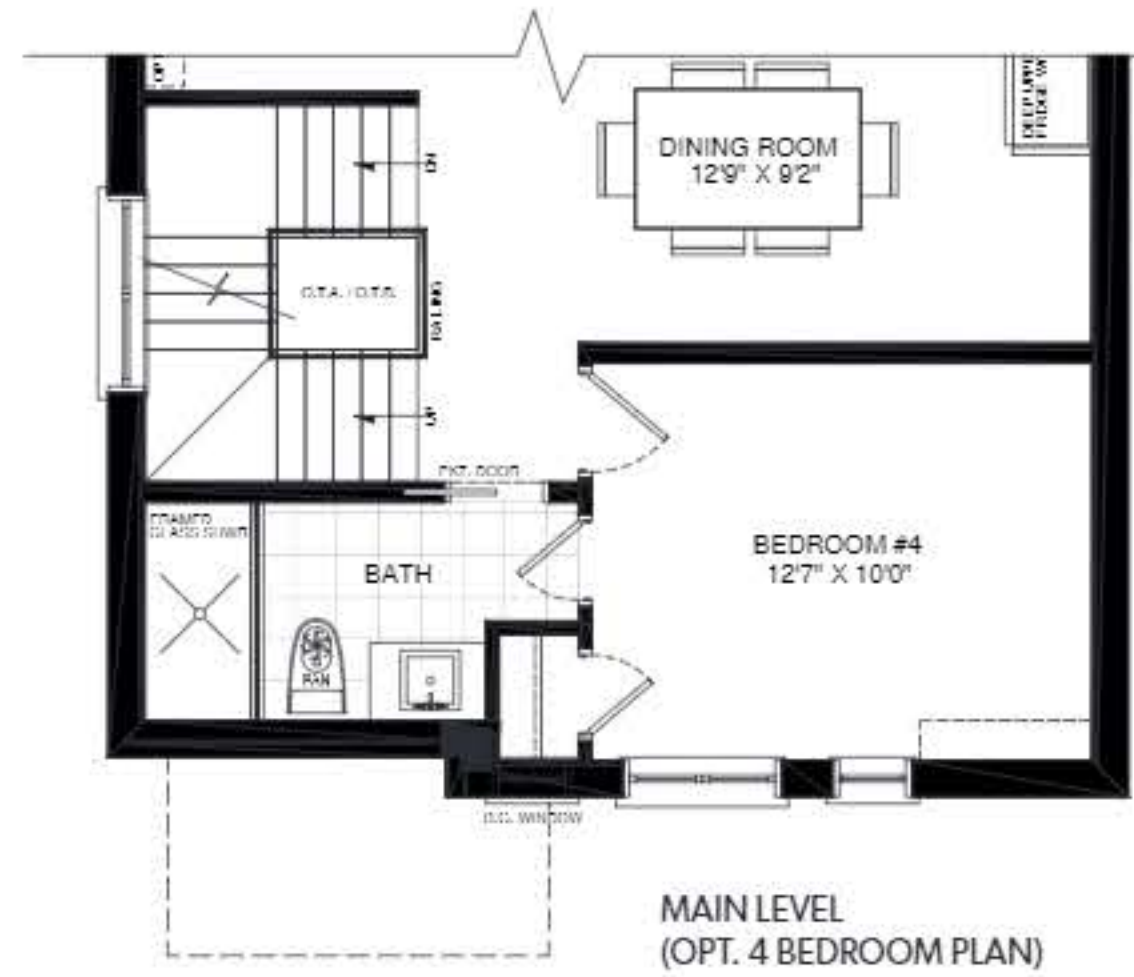
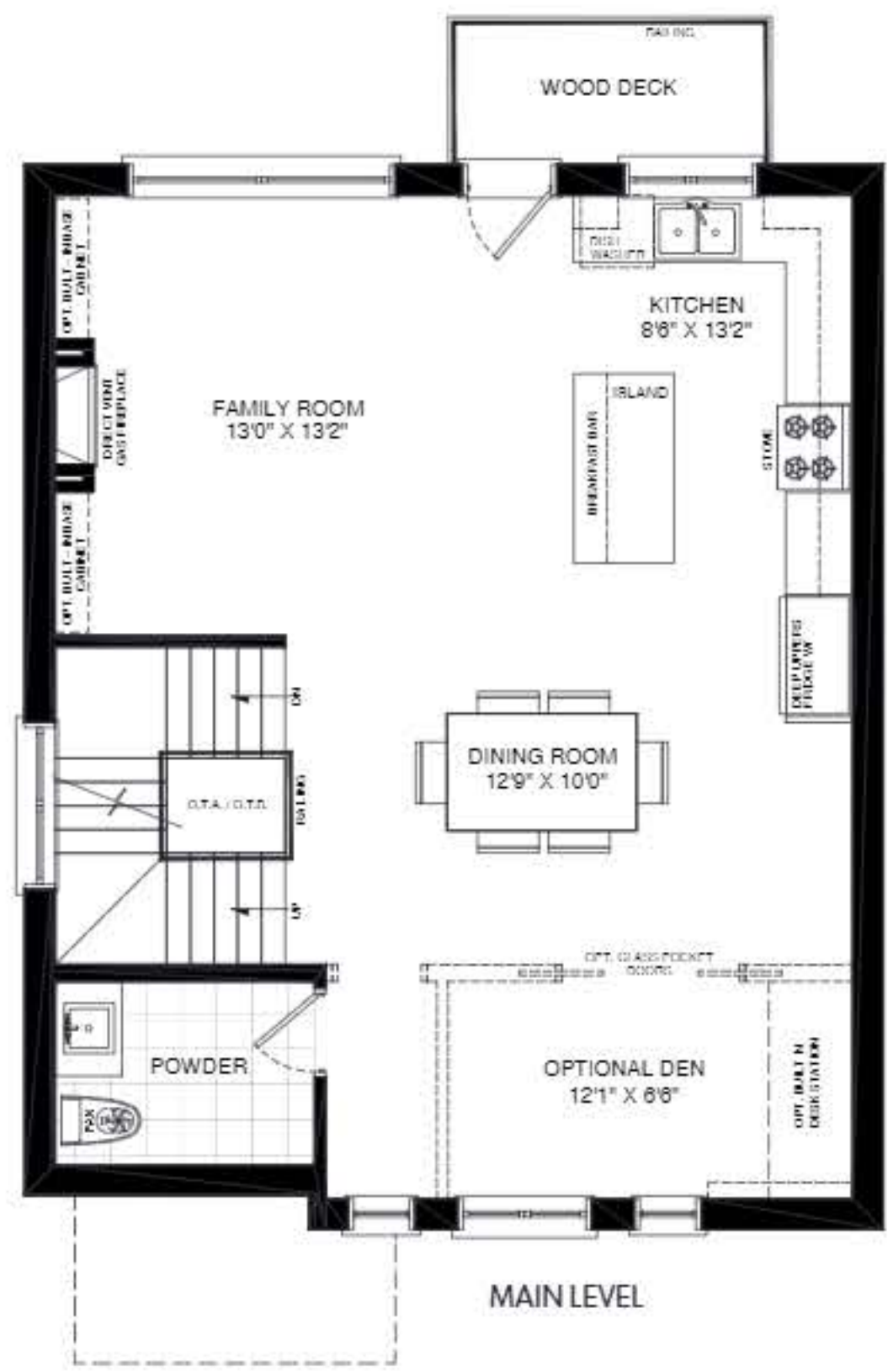
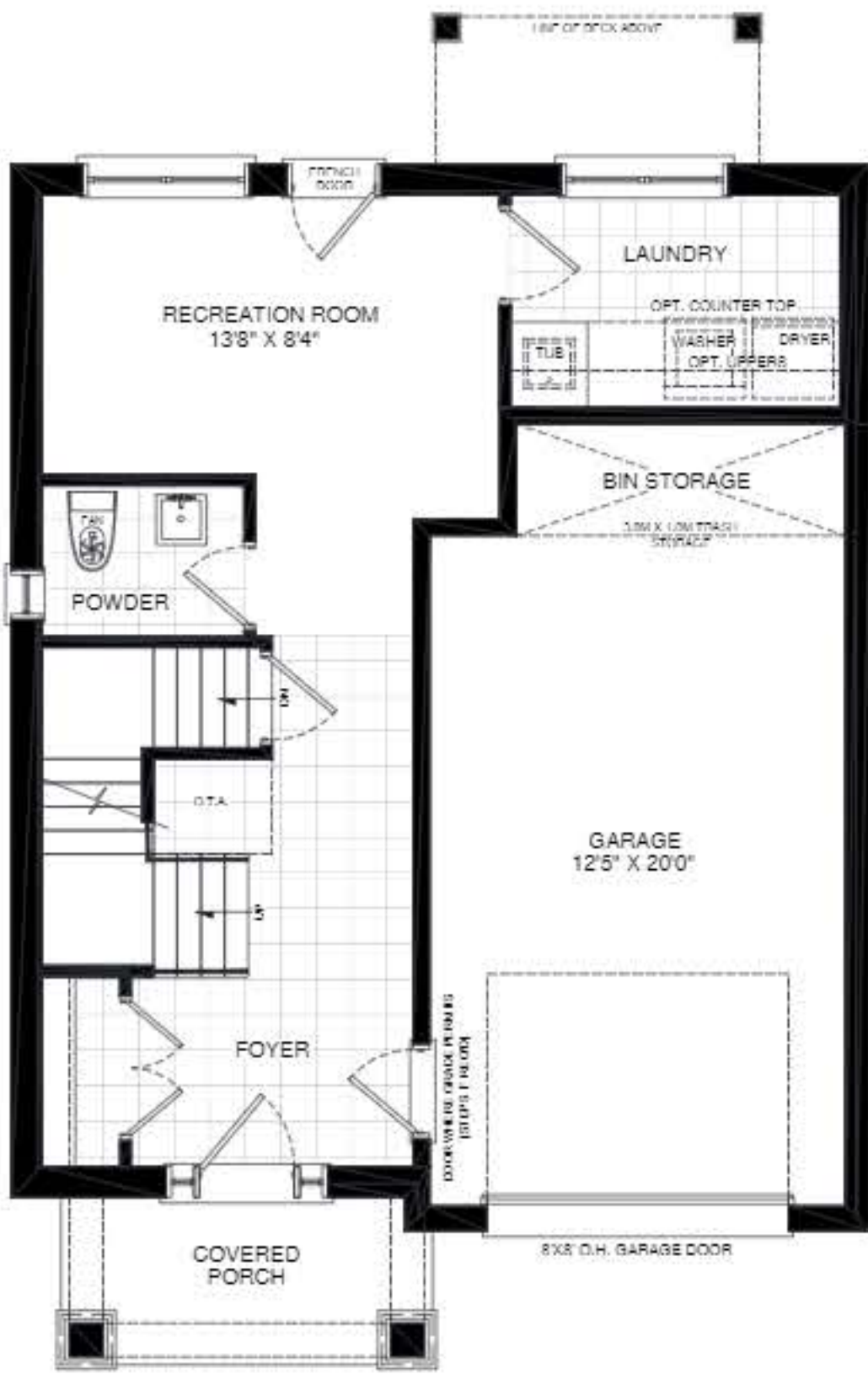
Total 2498 sf

\*finished basement

RIVERSIDE LUXURY

STERLING ESTATES

ON THE HUMBER



Finished basement does not include mechanical and storage rooms. Room sizes shown are approximate and measured in accordance with accepted industry methods, standards and practices. Square footage includes all finished interior space and enclosed open space belonging to each unit. Plans and specifications are subject to change without notice and subject to individual site conditions. All renderings are artist's concepts. E & O. E January 2021.



# The Wintergreen

2652 sf + 603 sf\*

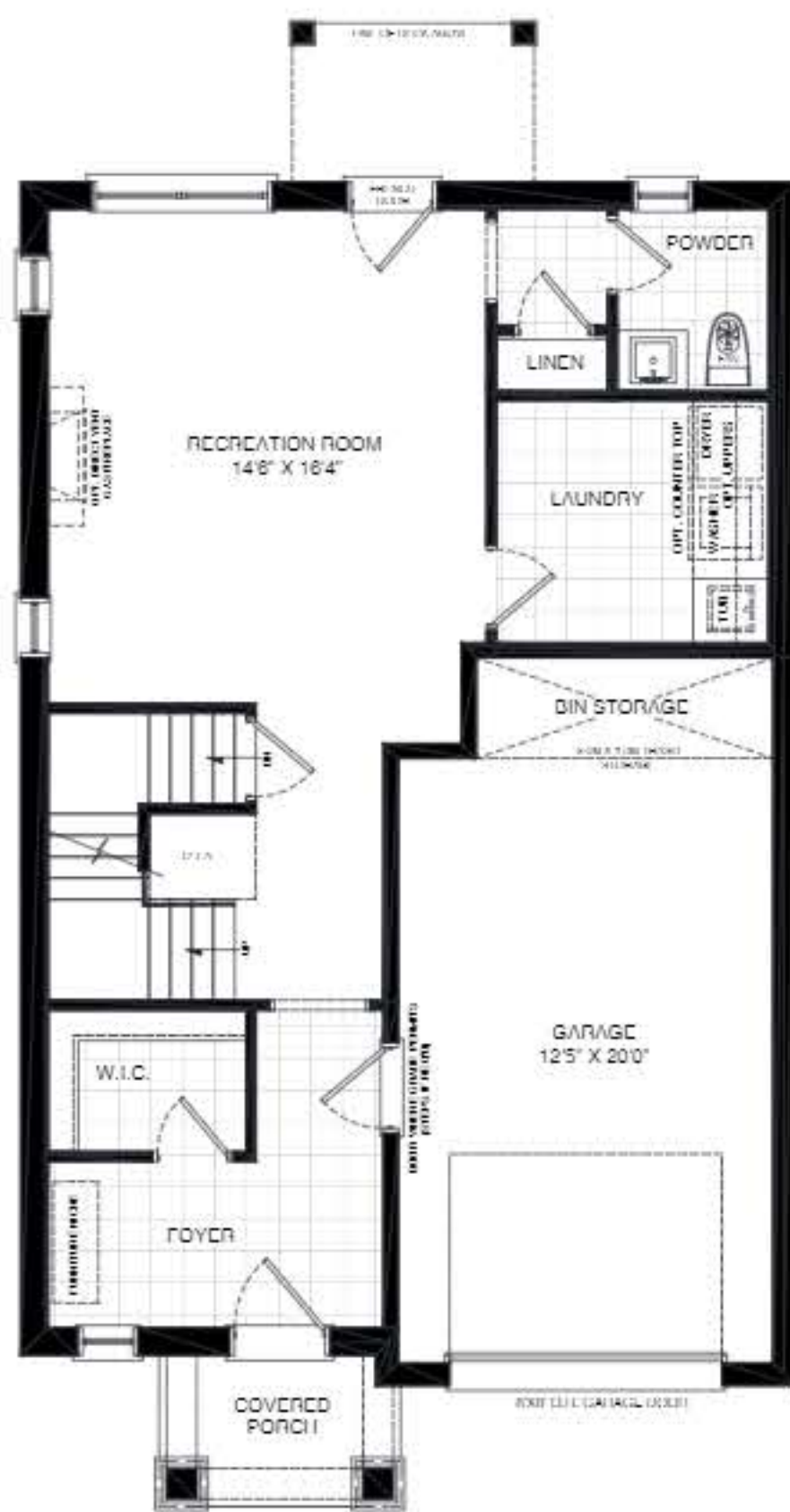
Total 3255 sf

\*finished basement

RIVERSIDE LUXURY

STERLING ESTATES

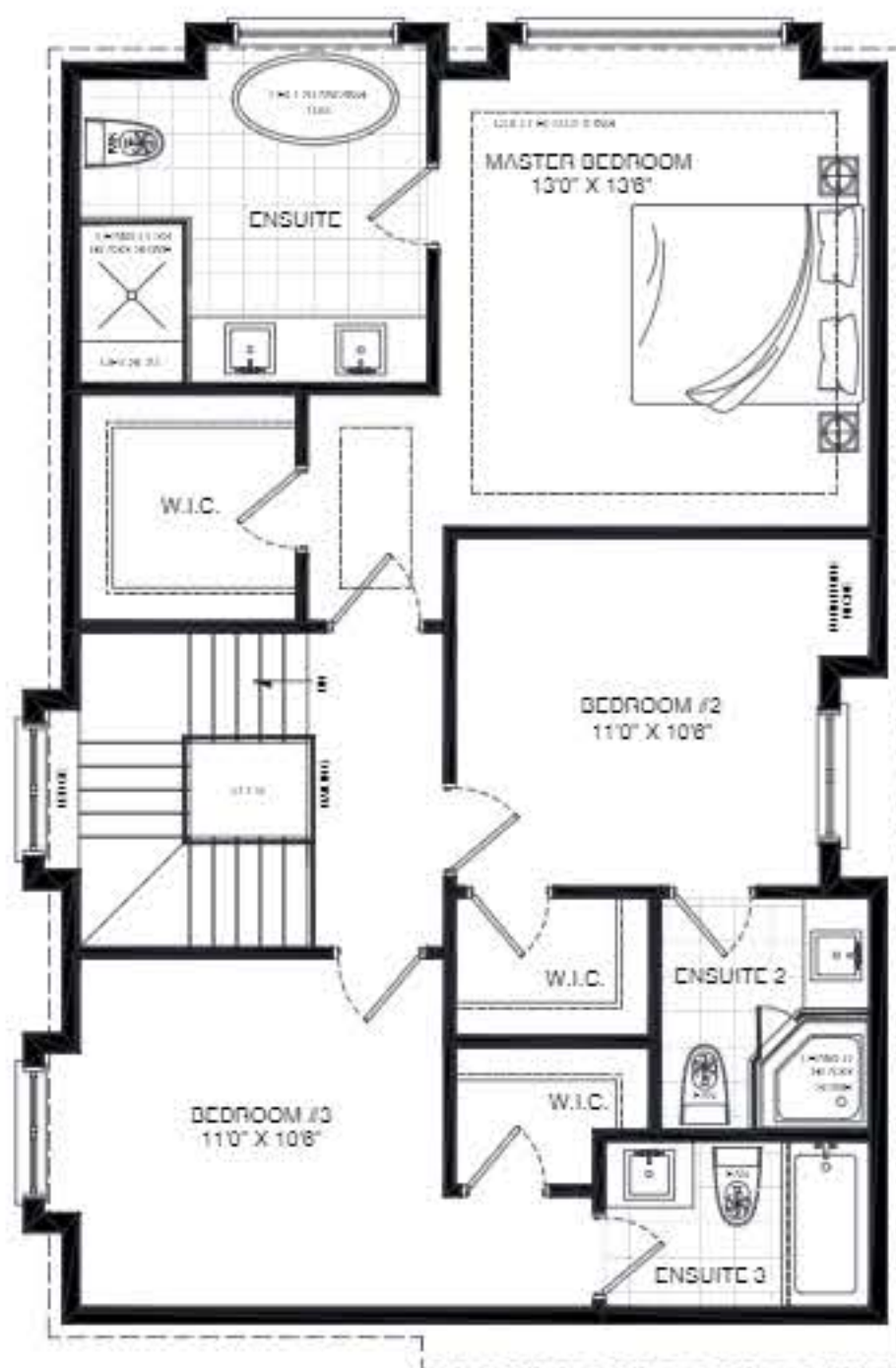
ON THE HUBBER



GROUND LEVEL



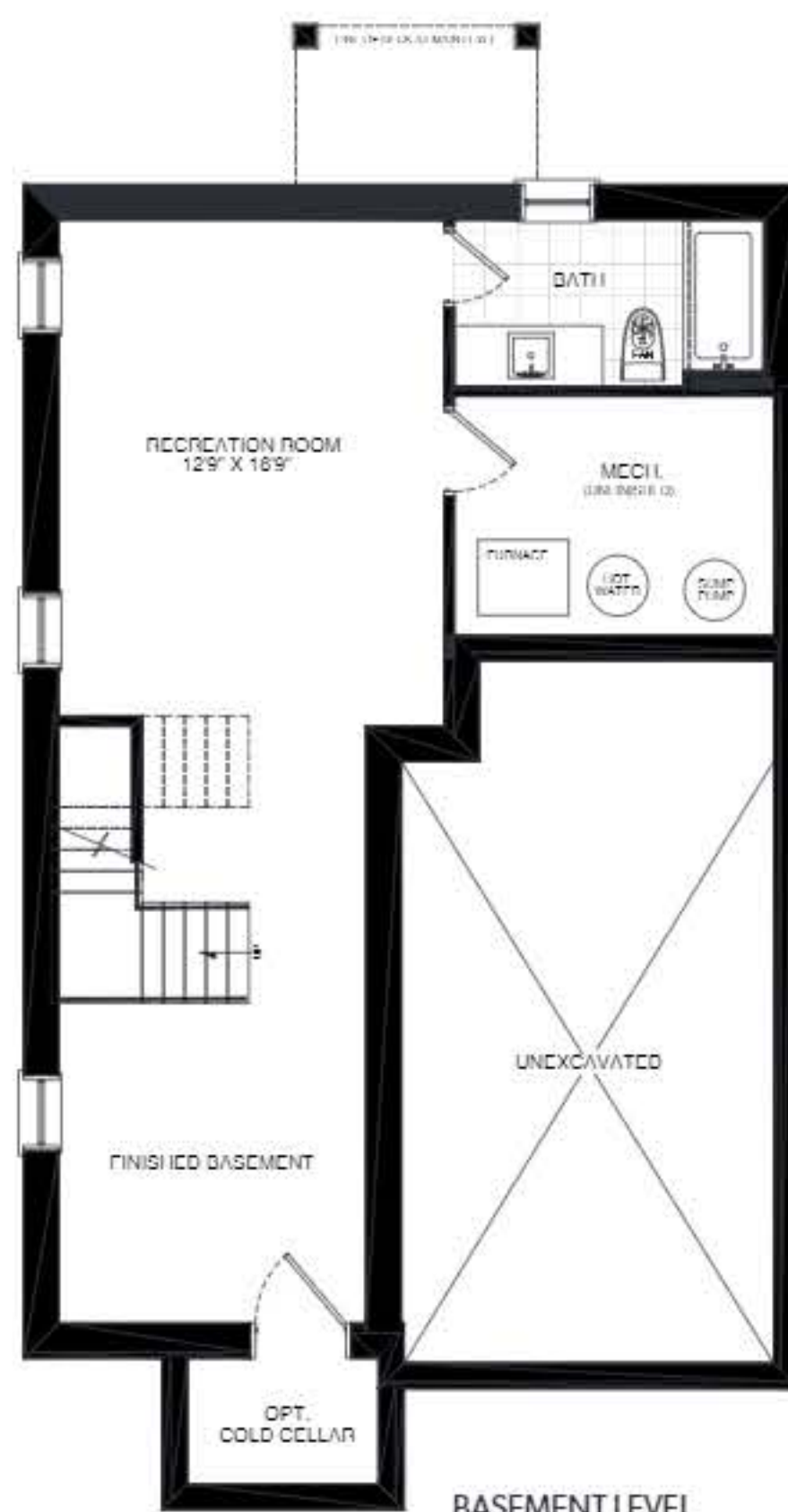
MAIN LEVEL



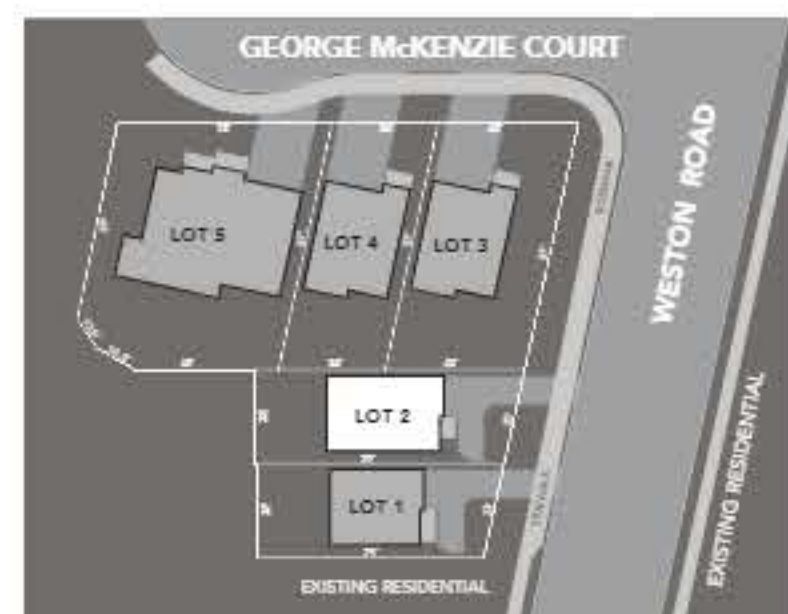
UPPER LEVEL



MAIN LEVEL  
(OPT. 4 BEDROOM PLAN)



BASEMENT LEVEL



Finished basement does not include mechanical and storage rooms. Room sizes shown are approximate and measured in accordance with accepted industry methods, standards and practices. Square footage includes all finished interior space and enclosed open space belonging to each unit. Plans and specifications are subject to change without notice and subject to individual site conditions. All renderings are artist's concepts. E & O. E January 2021.



# The Coneflower

2641 sf + 532 sf\*

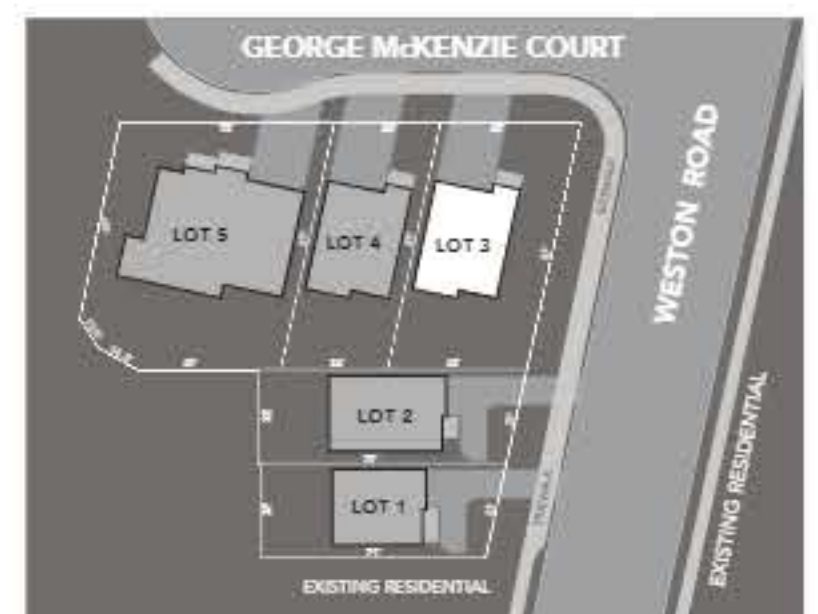
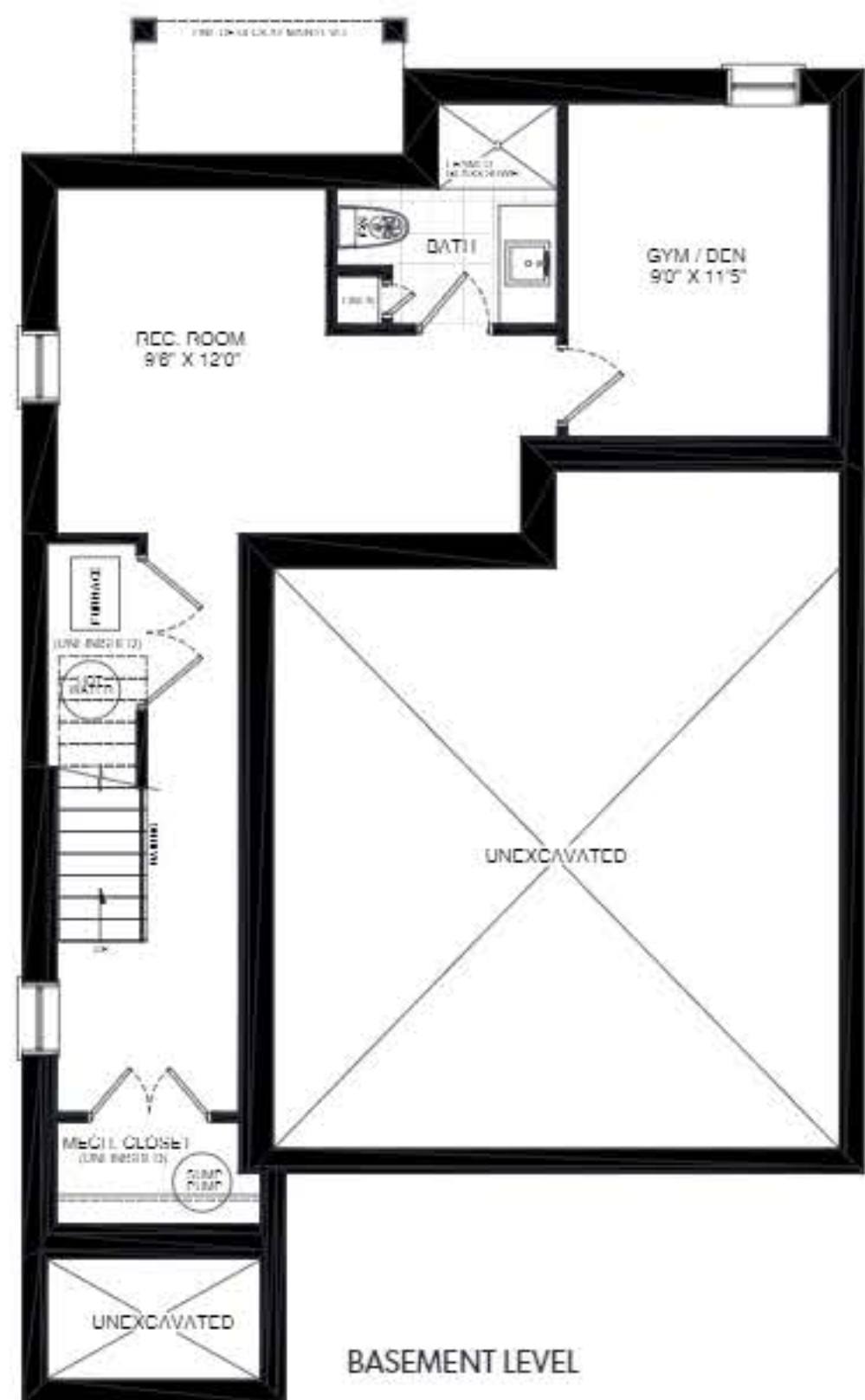
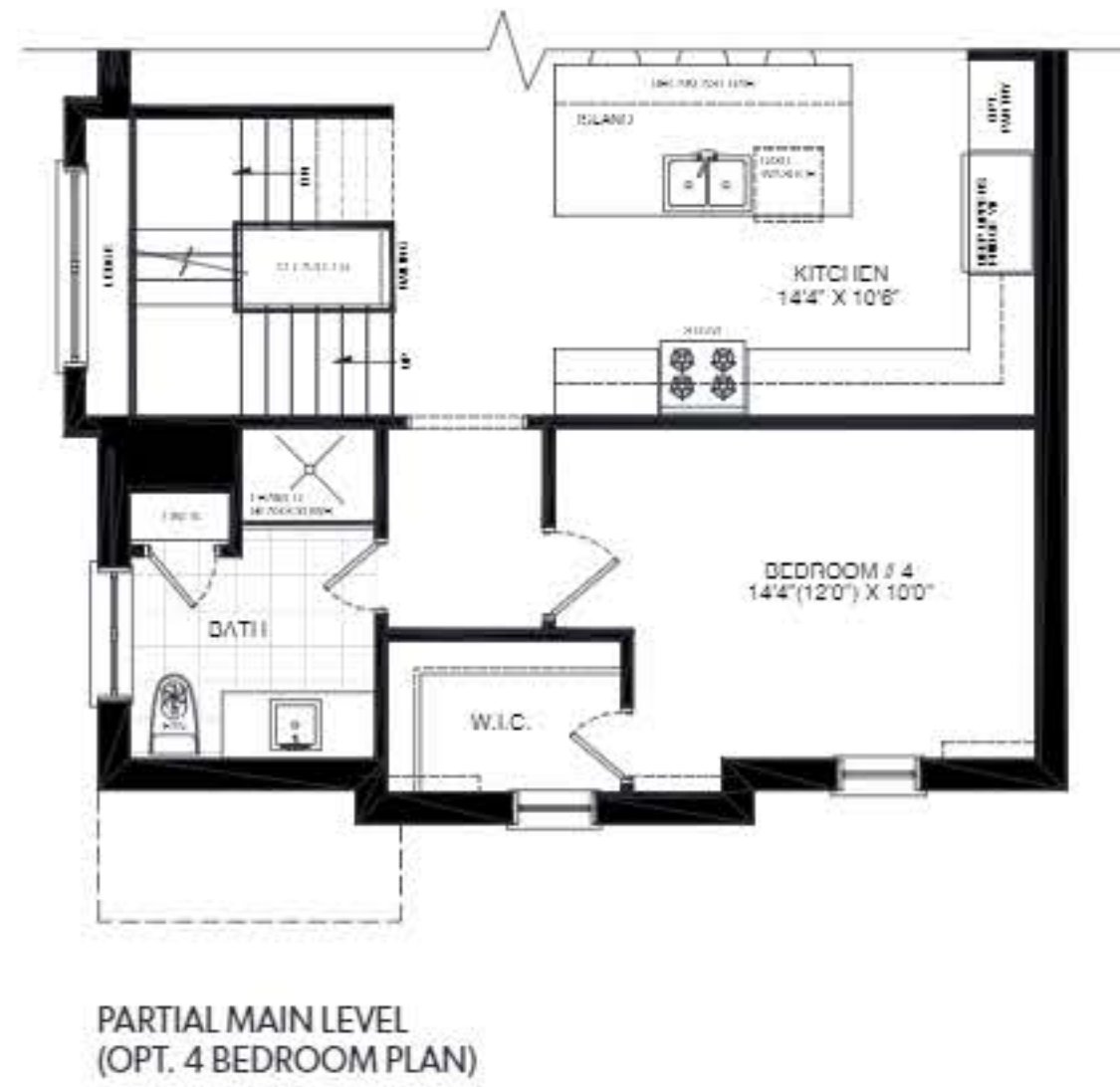
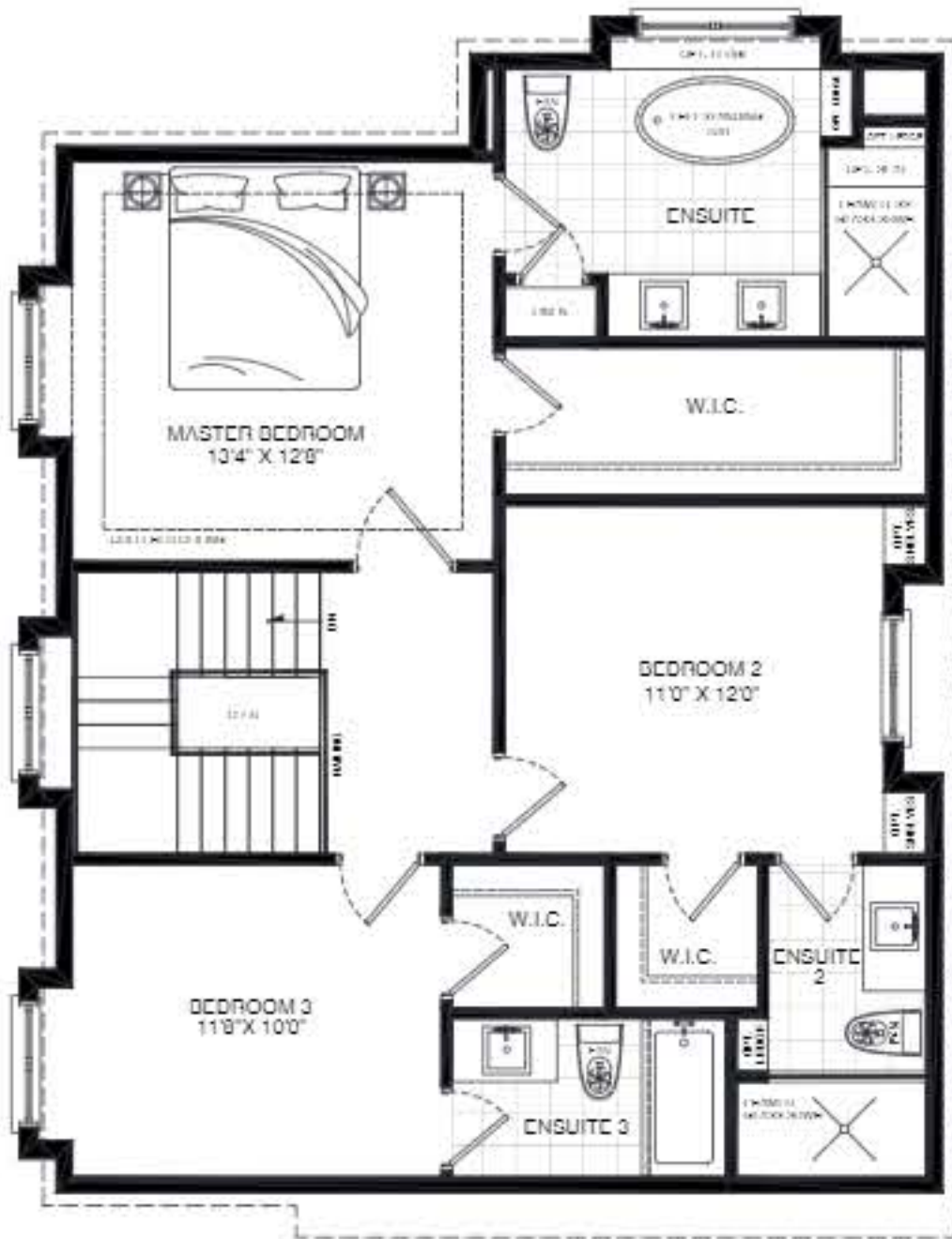
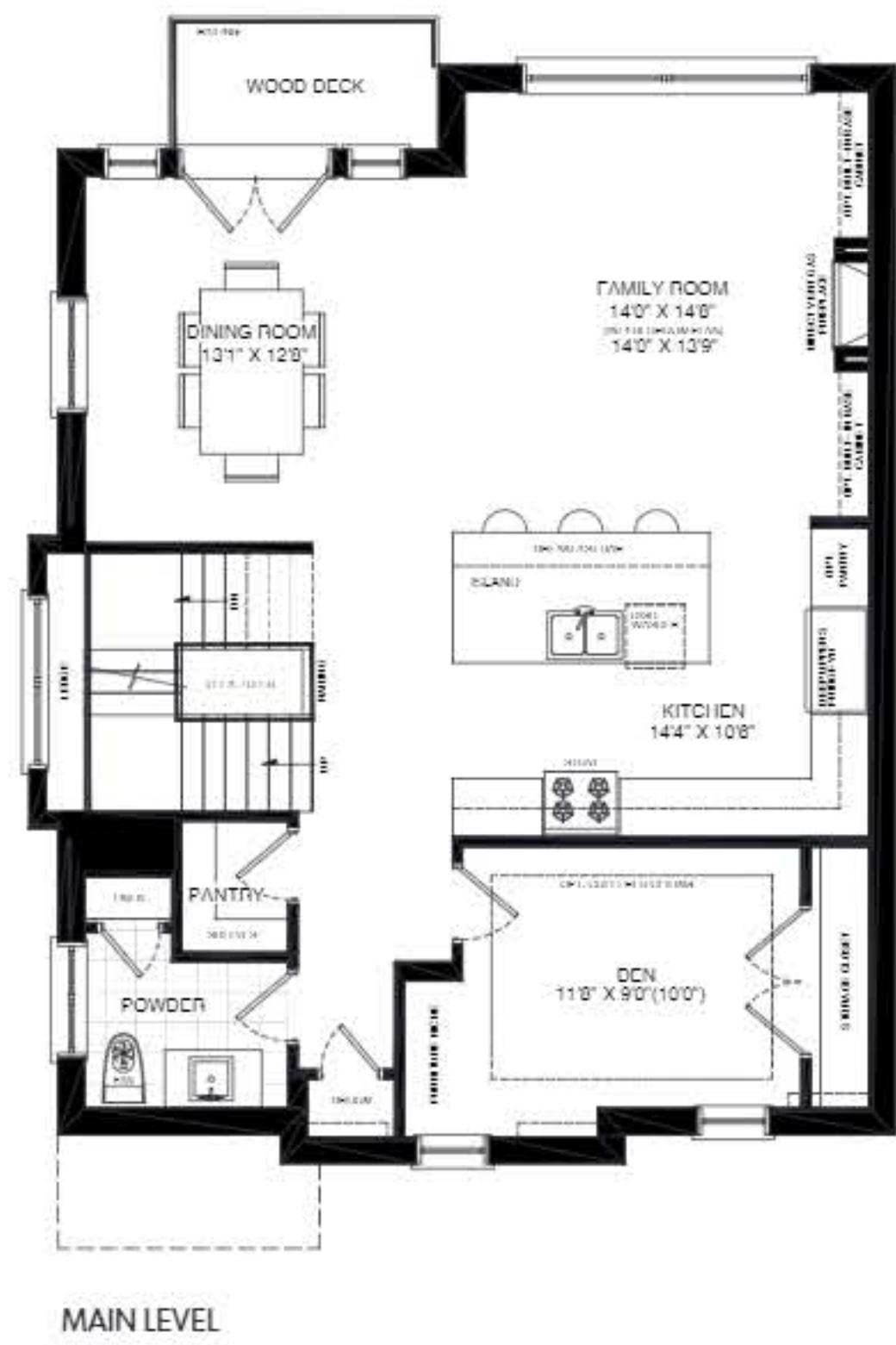
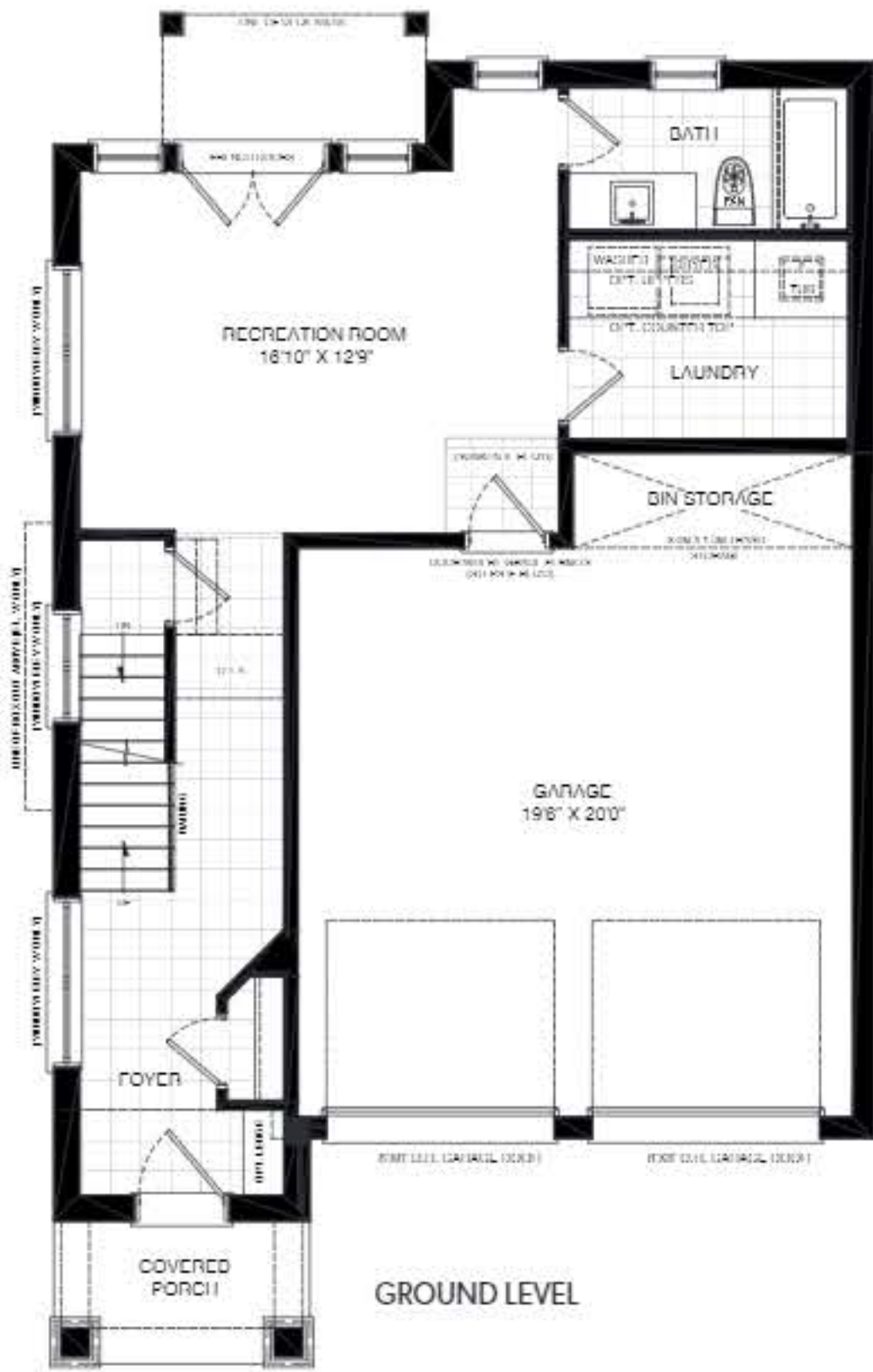
Total 3173 sf

\*finished basement

RIVERSIDE LUXURY

STERLING ESTATES

ON THE HUBBER



Finished basement does not include mechanical and storage rooms. Room sizes shown are approximate and measured in accordance with accepted industry methods, standards and practices. Square footage includes all finished interior space and enclosed open space belonging to each unit. Plans and specifications are subject to change without notice and subject to individual site conditions. All renderings are artist's concepts. E & O. E. January 2021.



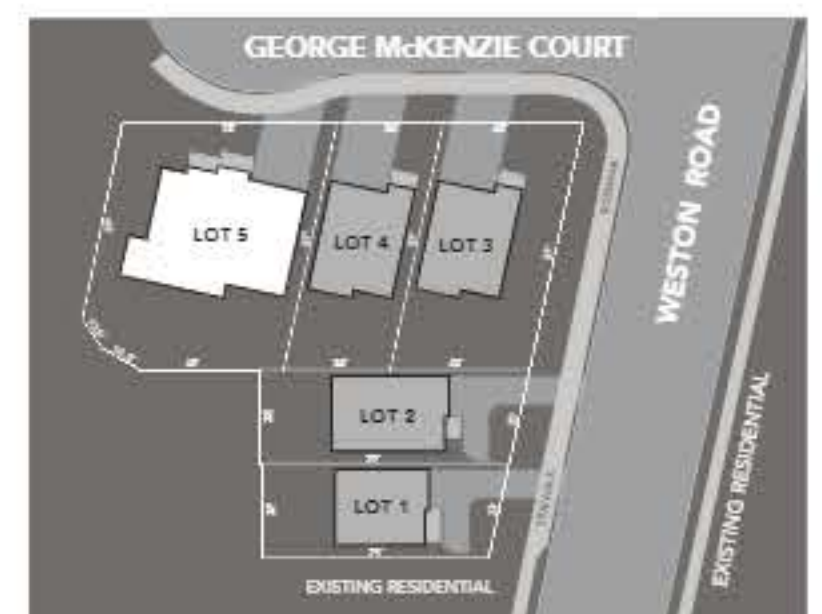
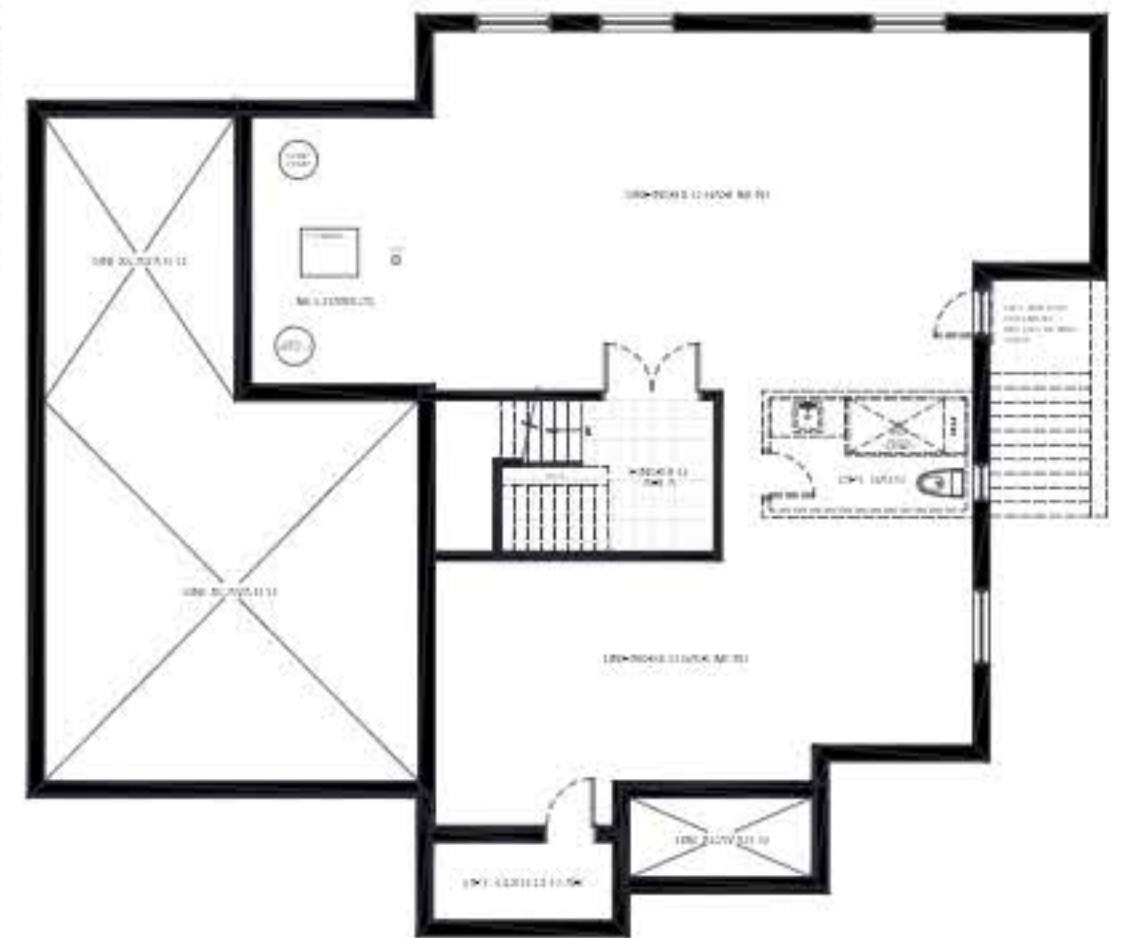
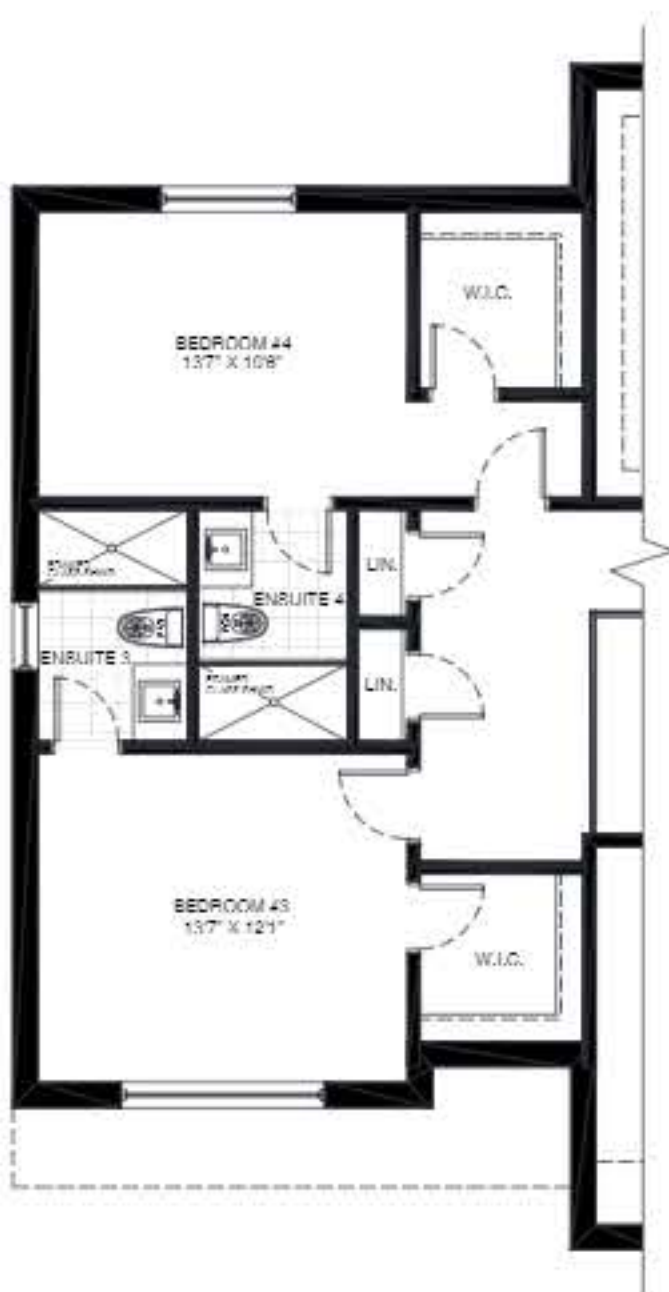
# The Trillium

## 3416 sf

# RIVERSIDE LUXURY

## STERLING ESTATES

ON THE HUBBER



Finished basement does not include mechanical and storage rooms. Room sizes shown are approximate and measured in accordance with accepted industry methods, standards and practices. Square footage includes all finished interior space and enclosed open space belonging to each unit. Plans and specifications are subject to change without notice and subject to individual site conditions. All renderings are artist's concepts. E & O. E January 2021.