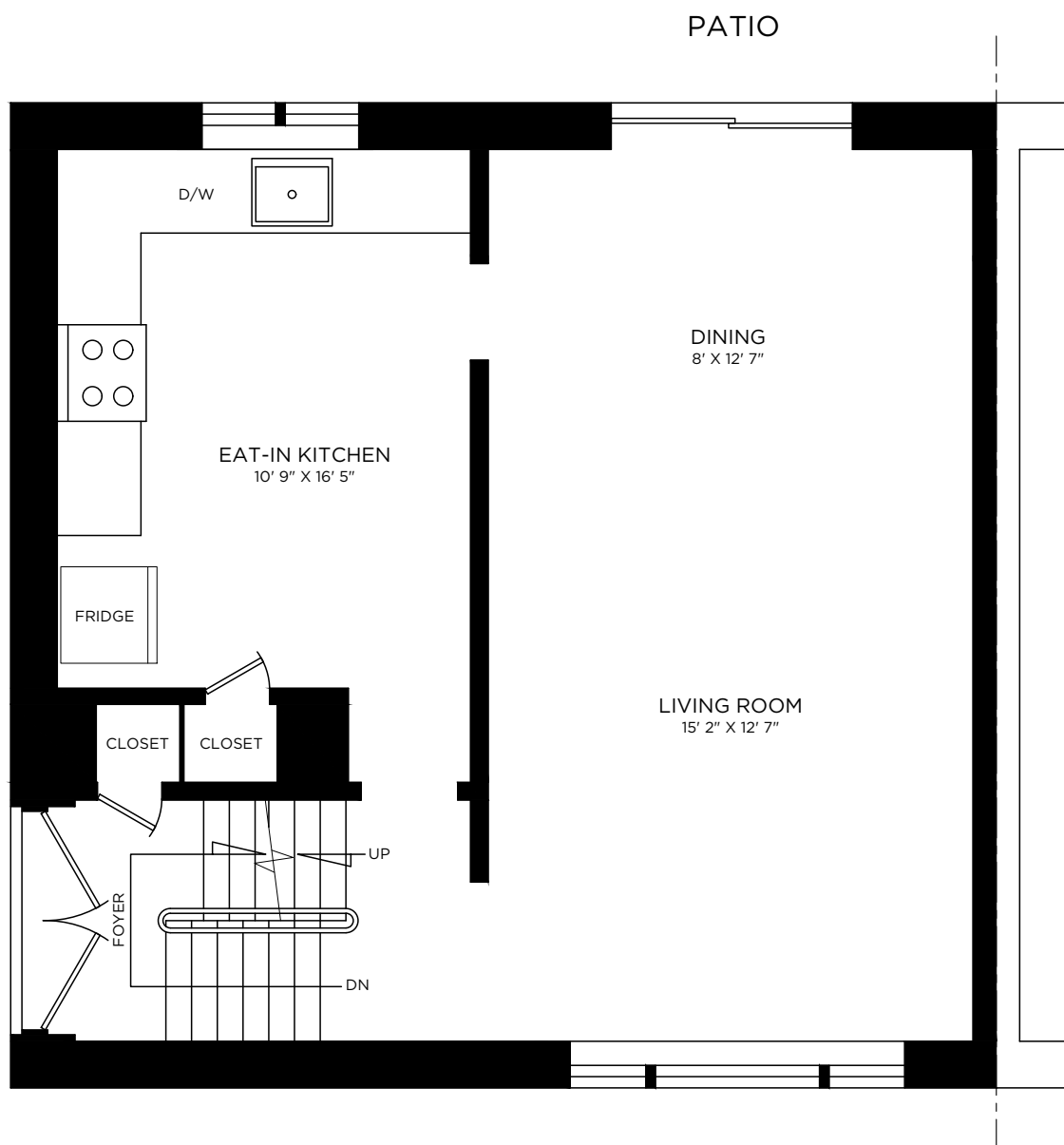
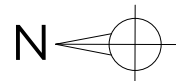


# SHANE

## 7 BIRCHBANK LN



**MAIN FLOOR**  
FLOOR AREA 652 SQ. FT.



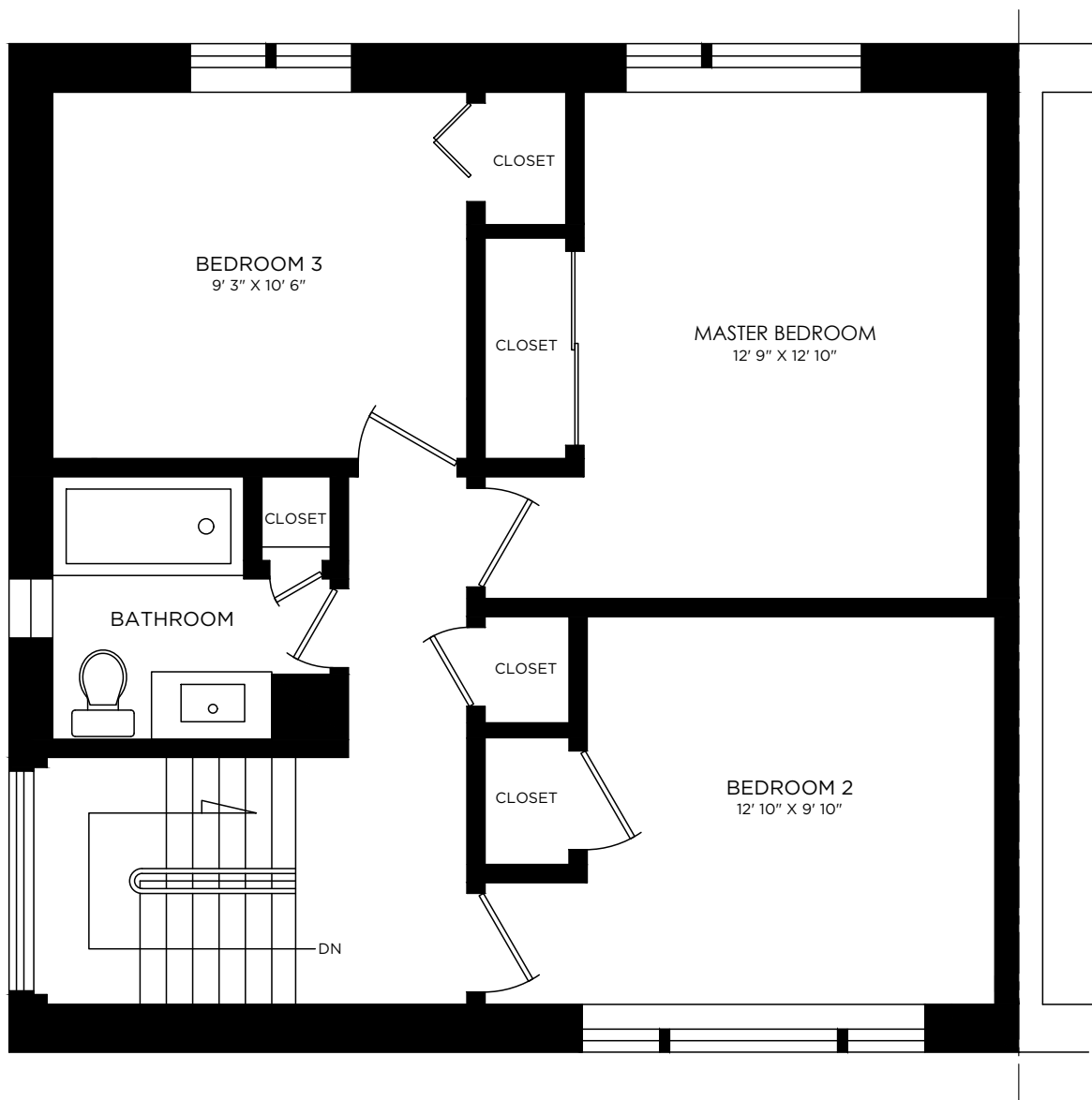
**SOLDBYSHANE.COM**

**416 36-SHANE**

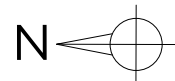
SHANE CARSLAKE, BROKER WITH ROYAL LEPAGE REAL ESTATE SERVICES LTD., BROKERAGE, HAS NOT MEASURED THE SUBJECT PROPERTY AND MAKES NO REPRESENTATIONS AS TO THE ACCURACY OF ANY OF THE MEASUREMENTS PROVIDED. THE MEASUREMENTS ARE ESTIMATES AND MUST NOT BE RELIED UPON. EXACT MEASUREMENTS CAN BE OBTAINED BY RETAINING THE SERVICES OF A PROFESSIONAL ARCHITECT OR ENGINEER.

# SHANE

## 7 BIRCHBANK LN



**SECOND FLOOR**  
FLOOR AREA 652 SQ. FT.



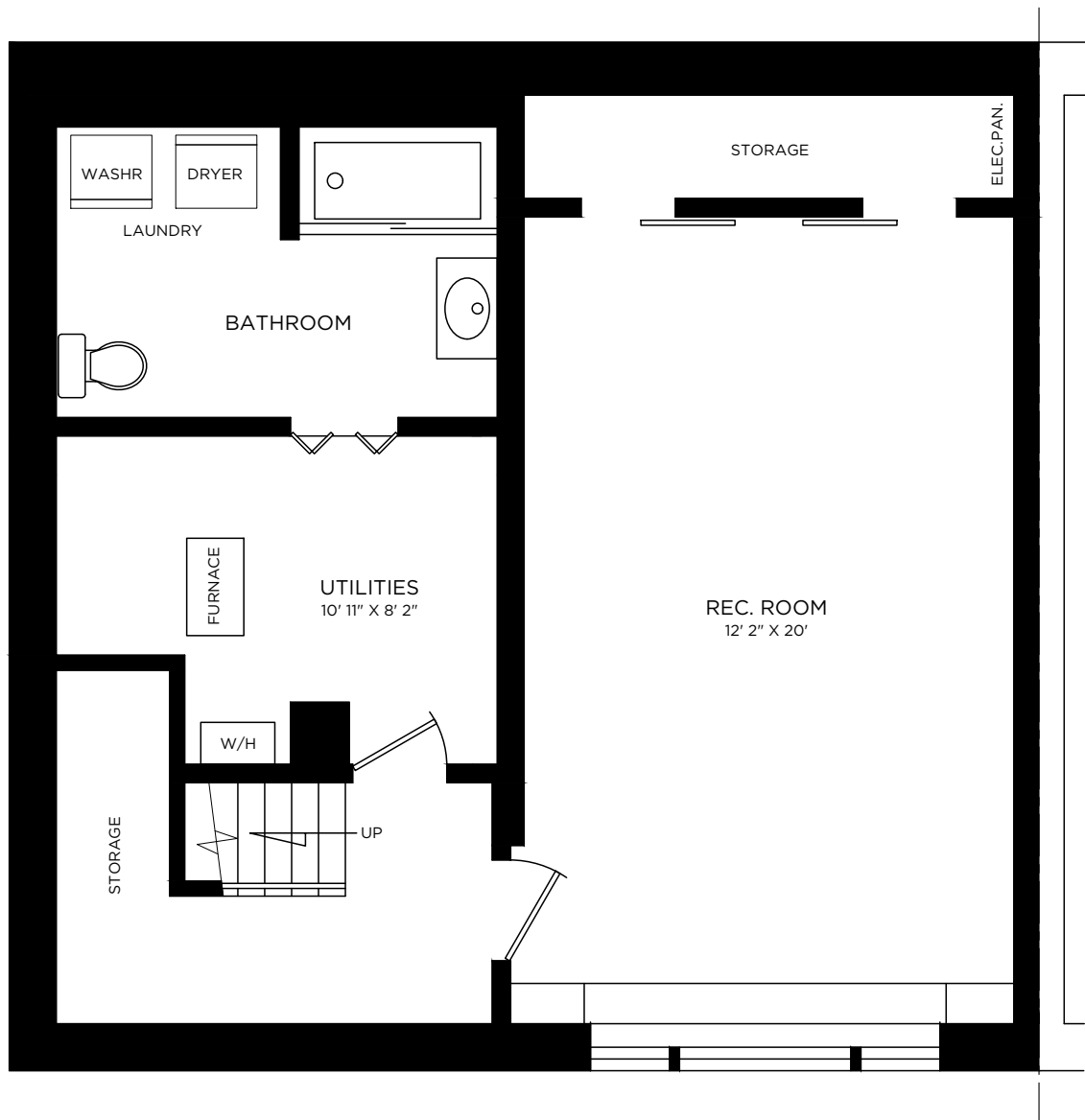
**SOLDBYSHANE.COM**

**416 36-SHANE**

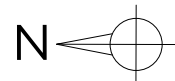
SHANE CARSLAKE, BROKER WITH ROYAL LEPAGE REAL ESTATE SERVICES LTD., BROKERAGE, HAS NOT MEASURED THE SUBJECT PROPERTY AND MAKES NO REPRESENTATIONS AS TO THE ACCURACY OF ANY OF THE MEASUREMENTS PROVIDED. THE MEASUREMENTS ARE ESTIMATES AND MUST NOT BE RELIED UPON. EXACT MEASUREMENTS CAN BE OBTAINED BY RETAINING THE SERVICES OF A PROFESSIONAL ARCHITECT OR ENGINEER.

# SHANE

## 7 BIRCHBANK LN



**BASEMENT**  
FLOOR AREA 652 SQ. FT.



**SOLDBYSHANE.COM**

**416 36-SHANE**

SHANE CARSLAKE, BROKER WITH ROYAL LEPAGE REAL ESTATE SERVICES LTD., BROKERAGE, HAS NOT MEASURED THE SUBJECT PROPERTY AND MAKES NO REPRESENTATIONS AS TO THE ACCURACY OF ANY OF THE MEASUREMENTS PROVIDED. THE MEASUREMENTS ARE ESTIMATES AND MUST NOT BE RELIED UPON. EXACT MEASUREMENTS CAN BE OBTAINED BY RETAINING THE SERVICES OF A PROFESSIONAL ARCHITECT OR ENGINEER.