

**Kitchens:**

Granite or caesar countertops\*  
Contemporary kitchen cabinetry\*  
Open concept kitchens (breakfast bar or island optional)\*\*  
Stainless steel appliances including: refrigerator,  
dishwasher, range and microvent  
Track lighting with three heads  
Stainless steel sink with lever faucet and integrated pull out  
vegetable spray  
Ceramic backsplash\*

**Bathrooms:**

Master bathroom:  
Marble countertops\* with under-mount sink  
Second bathroom:  
Cultured marble countertop with integrated basin\* \*\*\*  
Contemporary cabinetry\*  
Ceramic tile flooring\*  
Separate shower stall with framed door and light\*\*  
Full height ceramic tile bathtub and shower surround\*\*  
Chrome finish tub/shower filler and faucet  
Decorative wall lighting fixture  
Frameless mirror

**Laundry:**

Stacked washer/dryer  
White ceramic floor tiles

**Suite Features:**

Engineered hardwood floors in foyer, living, dining,  
kitchen and den areas\*  
Carpet in bedroom(s)\*  
Solid core entrance door with privacy viewer  
Paint grade interior suite doors with brushed  
chrome levers\*\*  
Contemporary glass sliding doors\*\*  
Painted baseboard throughout  
Balconies or terraces with railings\*\*

**General Features:**

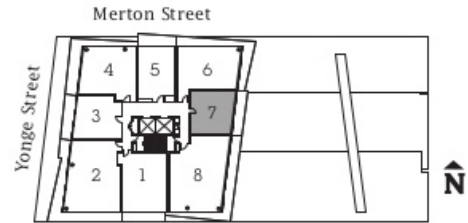
9 foot ceilings in living areas  
Floor to ceiling windows  
Capped ceiling outlet in dining area  
Pre-wired for cable television and telephone in living,  
master bedroom and den\*\*  
Wired for high speed internet access

**Security:**

24 hour concierge services  
Closed circuit cameras, panic buttons and high intensity  
lighting in parking garage  
Entrance security panel within suite connected to concierge  
Smoke and carbon monoxide detectors as per  
building code

\* Colours and or materials to be selected from Vendor's standard sample packages \*\* As per plan \*\*\* If Applicable

Cresford Developments warranty backed by Tarion Warranty program for new construction. All dimensions including ceiling height and area, if provided, are approximate and may change. Actual living area may vary from any stated floor area. The Vendor has the right to substitute other products and materials for those listed in this schedule, provided the substituted products are of equal or better value. The purchaser acknowledges that some items displayed in the model suite may not be standard finishes. Prices and specifications are subject to change without notice. E&O.E. All illustrations are artist's impression.

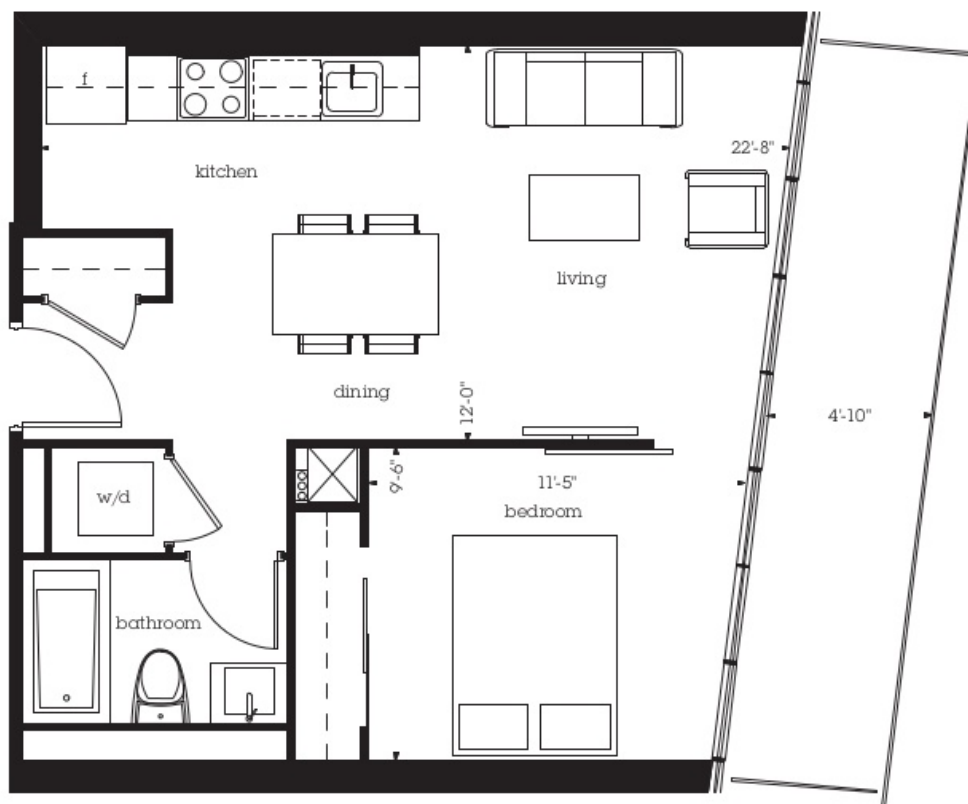


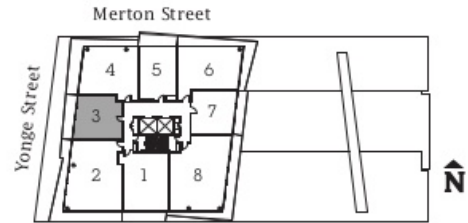
# THE EAST

**519 Square Feet /// Balcony 110 Square Feet**



One bedroom suite



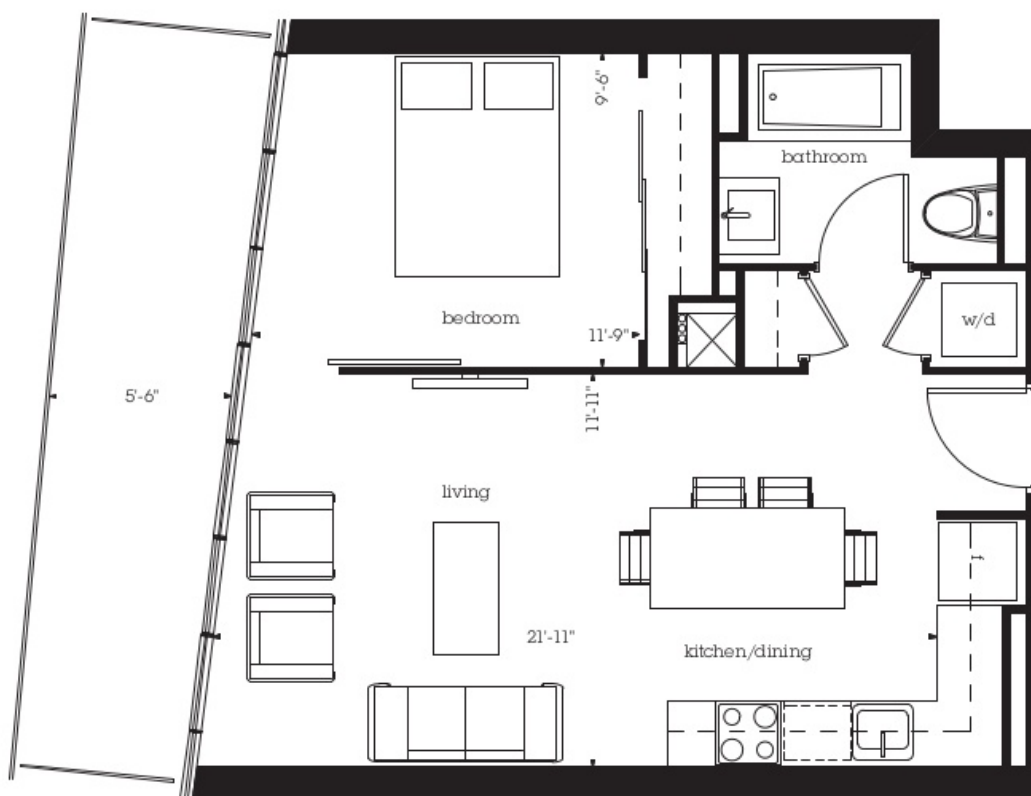


# THE WEST

**544 Square Feet /// Balcony 124 Square Feet**



One bedroom suite



Cresford Developments warranty backed by Tarion Warranty program for new construction. All dimensions including ceiling height and area, if provided, are approximate and may change. Actual living area may vary from any stated floor area. The Vendor has the right to substitute other products and materials for those listed in this schedule, provided the substituted products are of equal or better value. The purchaser acknowledges that some items displayed in the modelsuite may not be standard finishes. Prices and specifications are subject to change without notice. E & O.E. All illustrations are artist's impression.

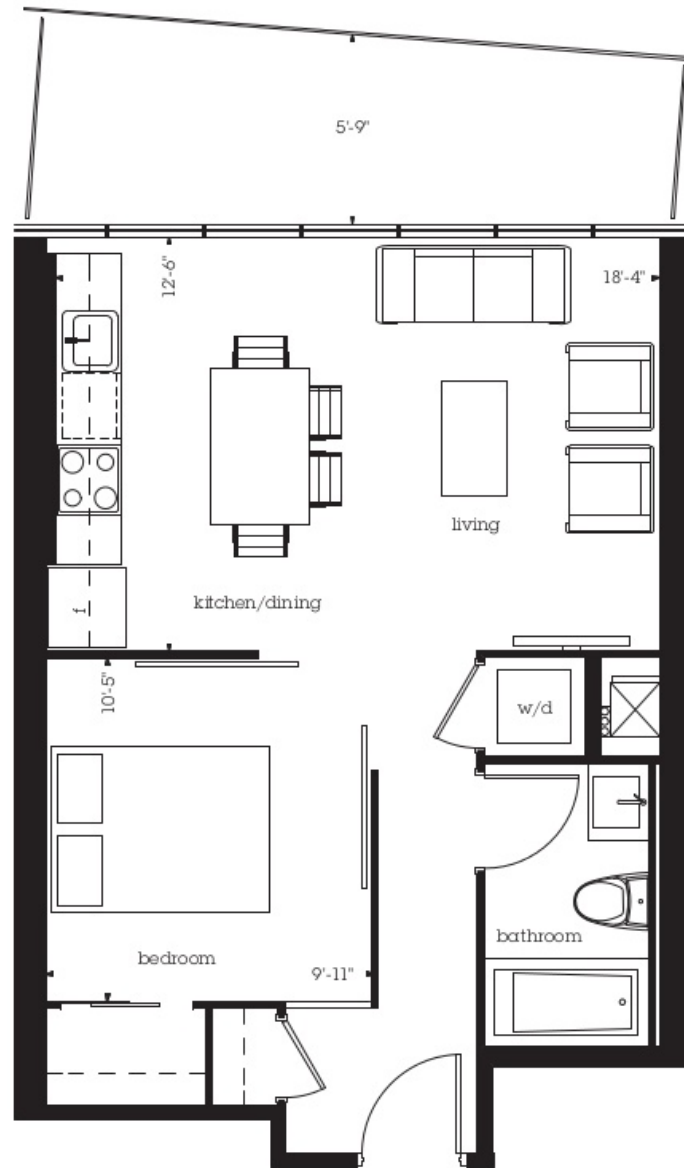


# THE NORTH

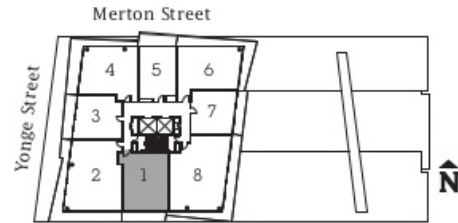
**532 Square Feet /// Balcony 112 Square Feet**



One bedroom suite



Cresford Developments warranty backed by Tarion Warranty program for new construction. All dimensions including ceiling height and area, if provided, are approximate and may change. Actual living area may vary from any stated floor area. The Vendor has the right to substitute other products and materials for those listed in this schedule, provided the substituted products are of equal or better value. The purchaser acknowledges that some items displayed in the modelsuite may not be standard finishes. Prices and specifications are subject to change without notice. E & O.E. All illustrations are artist's impression.



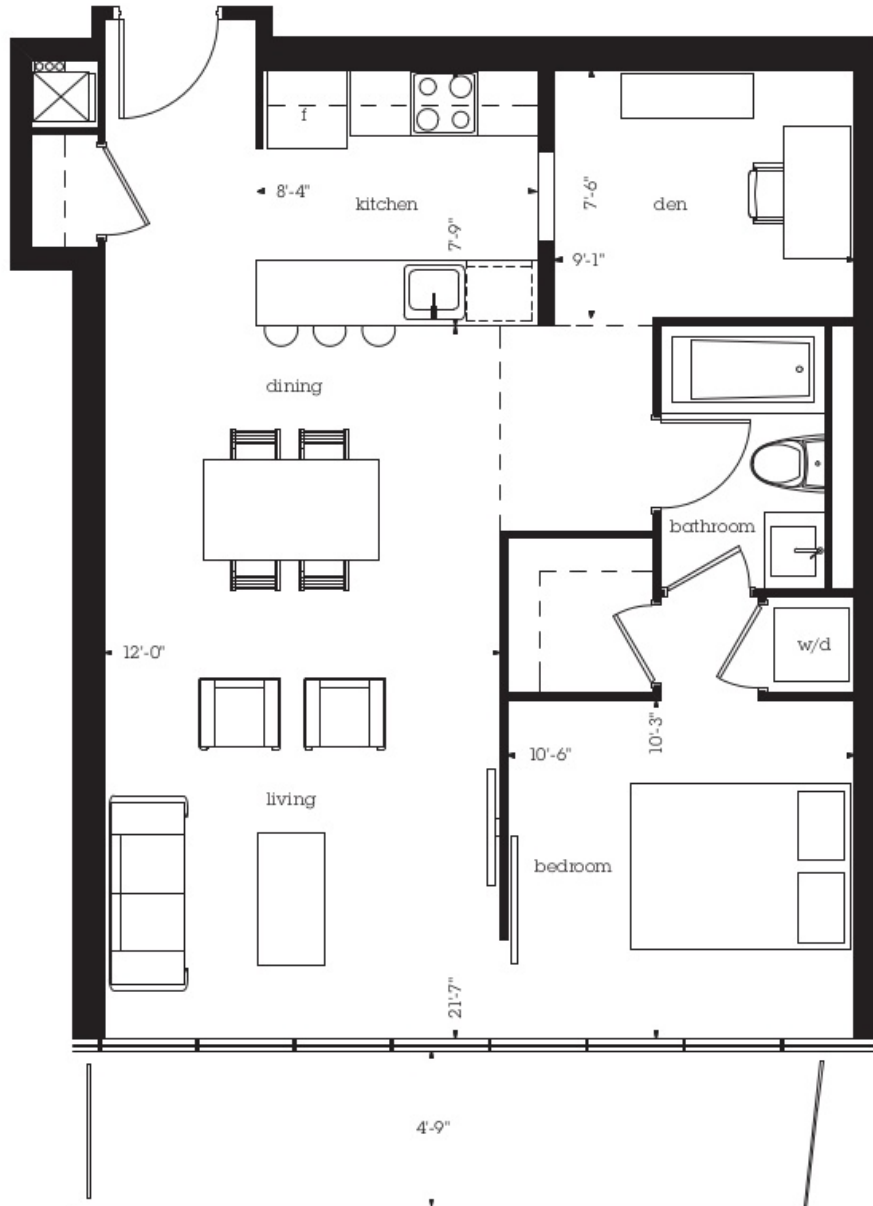
# THE SOUTH

**756 Square Feet /// Balcony 104 Square Feet**

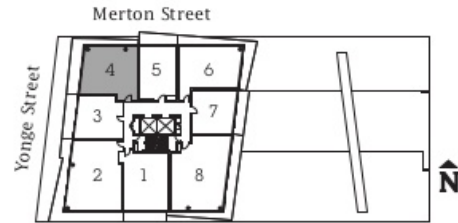


One bedroom suite plus den





Cresford Developments warranty backed by Tarion Warranty program for new construction. All dimensions including ceiling height and area, if provided, are approximate and may change. Actual living area may vary from any stated floor area. The Vendor has the right to substitute other products and materials for those listed in this schedule, provided the substituted products are of equal or better value. The purchaser acknowledges that some items displayed in the model suite may not be standard finishes. Prices and specifications are subject to change without notice. E & O.E. All illustrations are artist's impression.



# THE NORTHWEST

**765 Square Feet /// Balcony 262 Square Feet**



One bedroom suite plus den



Cresford Developments warranty backed by Tarion Warranty program for new construction. All dimensions including ceiling height and area, if provided, are approximate and may change. Actual living area may vary from any stated floor area. The Vendor has the right to substitute other products and materials for those listed in this schedule, provided the substituted products are of equal or better value. The purchaser acknowledges that some items displayed in the modelsuite may not be standard finishes. Prices and specifications are subject to change without notice. E & O.E. All illustrations are artist's impression.

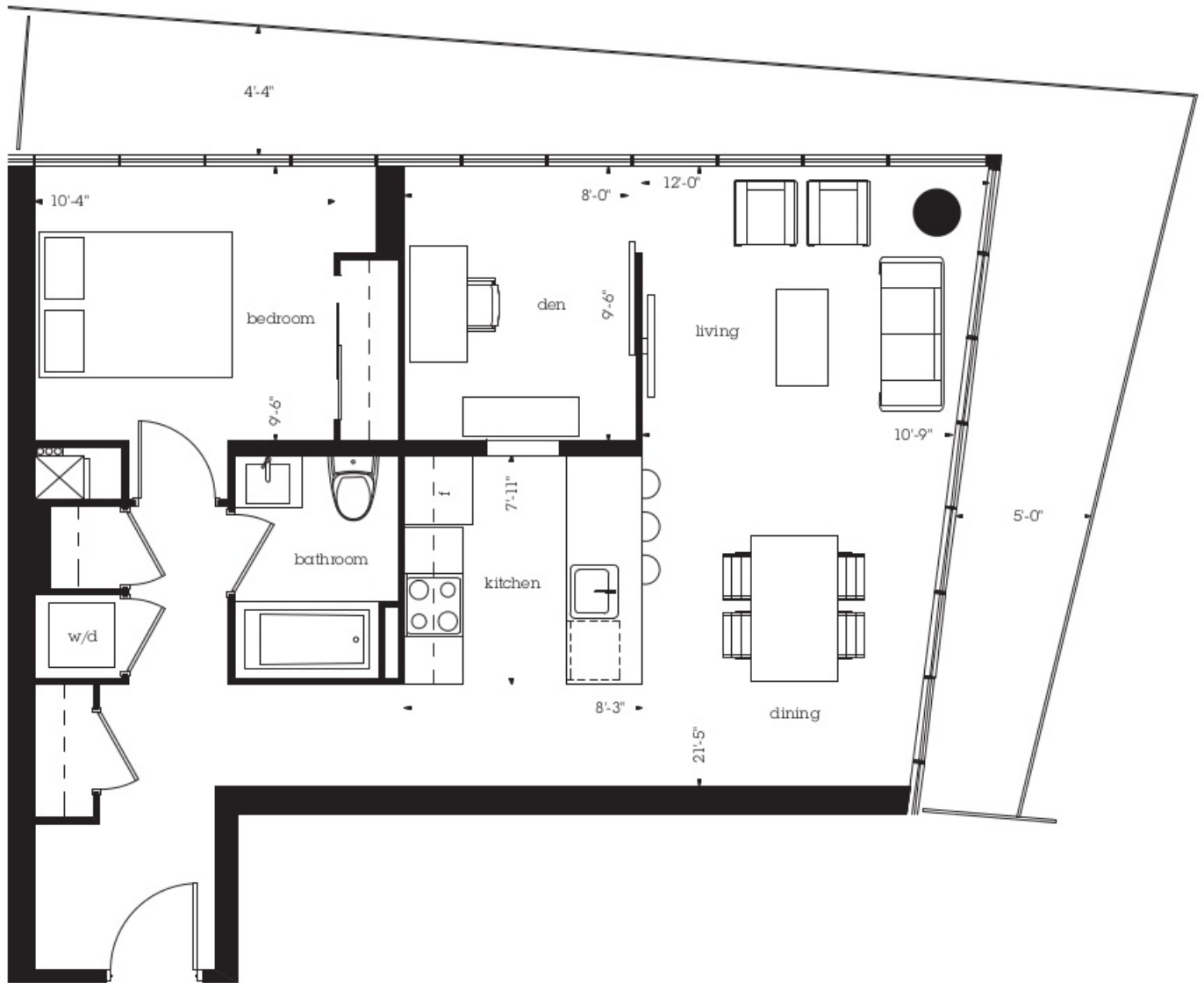


# THE NORTHEAST

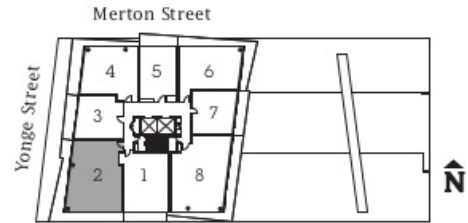
**767 Square Feet /// Balcony 250 Square Feet**



One bedroom suite plus den



Cresford Developments warranty backed by Tarion Warranty program for new construction. All dimensions including ceiling height and area, if provided, are approximate and may change. Actual living area may vary from any stated floor area. The Vendor has the right to substitute other products and materials for those listed in this schedule, provided the substituted products are of equal or better value. The purchaser acknowledges that some items displayed in the modelsuite may not be standard finishes. Prices and specifications are subject to change without notice. E & O.E. All illustrations are artist's impression.



# THE SOUTHWEST

**1,004 Square Feet /// Balcony 350 Square Feet**



Two bedroom suite plus den





# THE SOUTHEAST

**1,094 Square Feet /// Balcony 298 Square Feet**



Two bedroom suite plus den





Cresford Developments warranty backed by Tarion Warranty program for new construction. All dimensions including ceiling height and area, if provided, are approximate and may change. Actual living area may vary from any stated floor area. The Vendor has the right to substitute other products and materials for those listed in this schedule, provided the substituted products are of equal or better value. The purchaser acknowledges that some items displayed in the modelsuite may not be standard finishes. Prices and specifications are subject to change without notice. E & O.E. All illustrations are artist's impression.