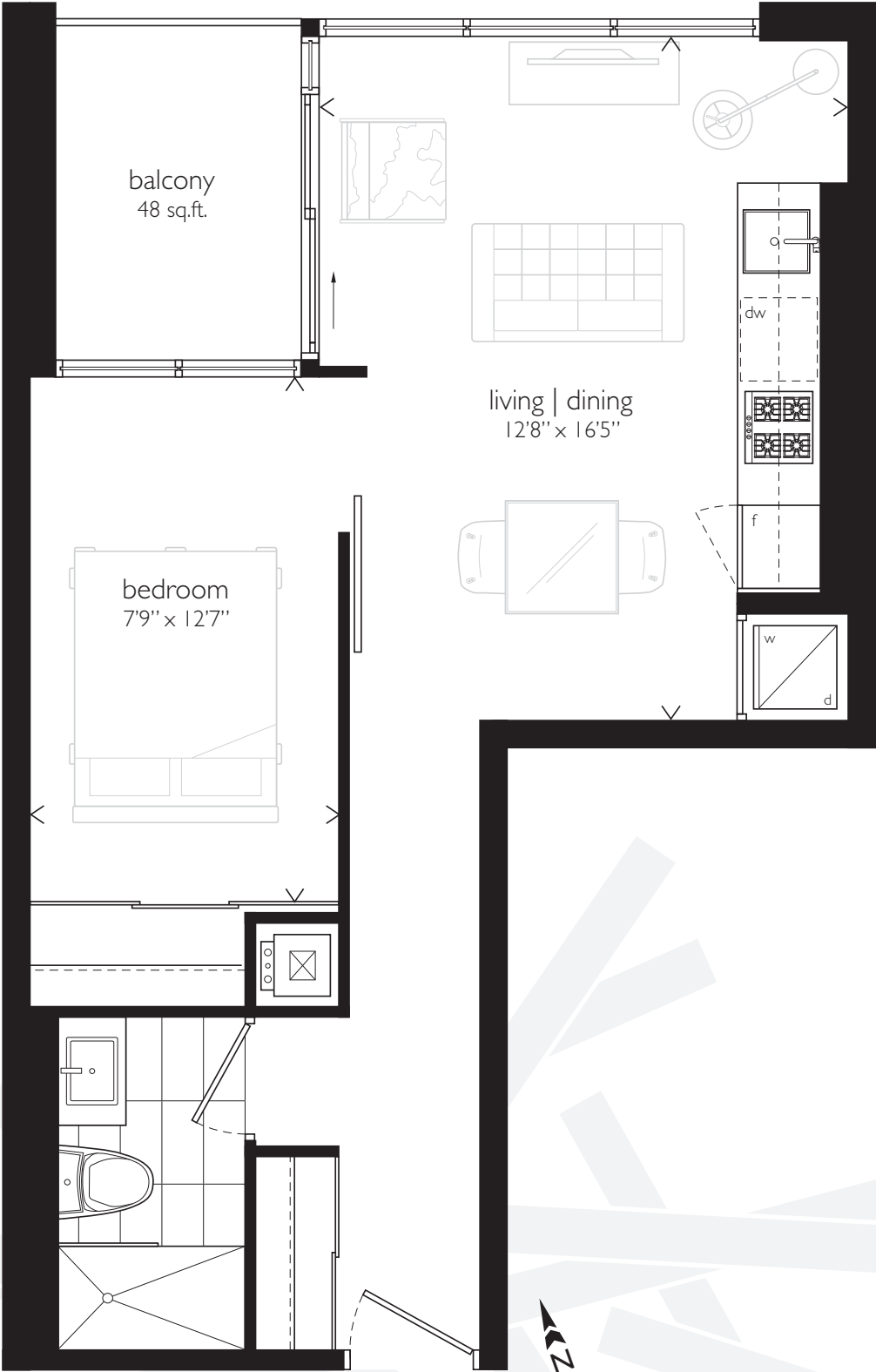


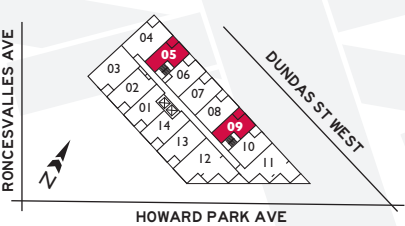
487 SQ.FT.

ONE BEDROOM
PLUS 48 SQ.FT. BALCONY



305
309
405
409
505
509
605
609
705

LEVELS 3-7

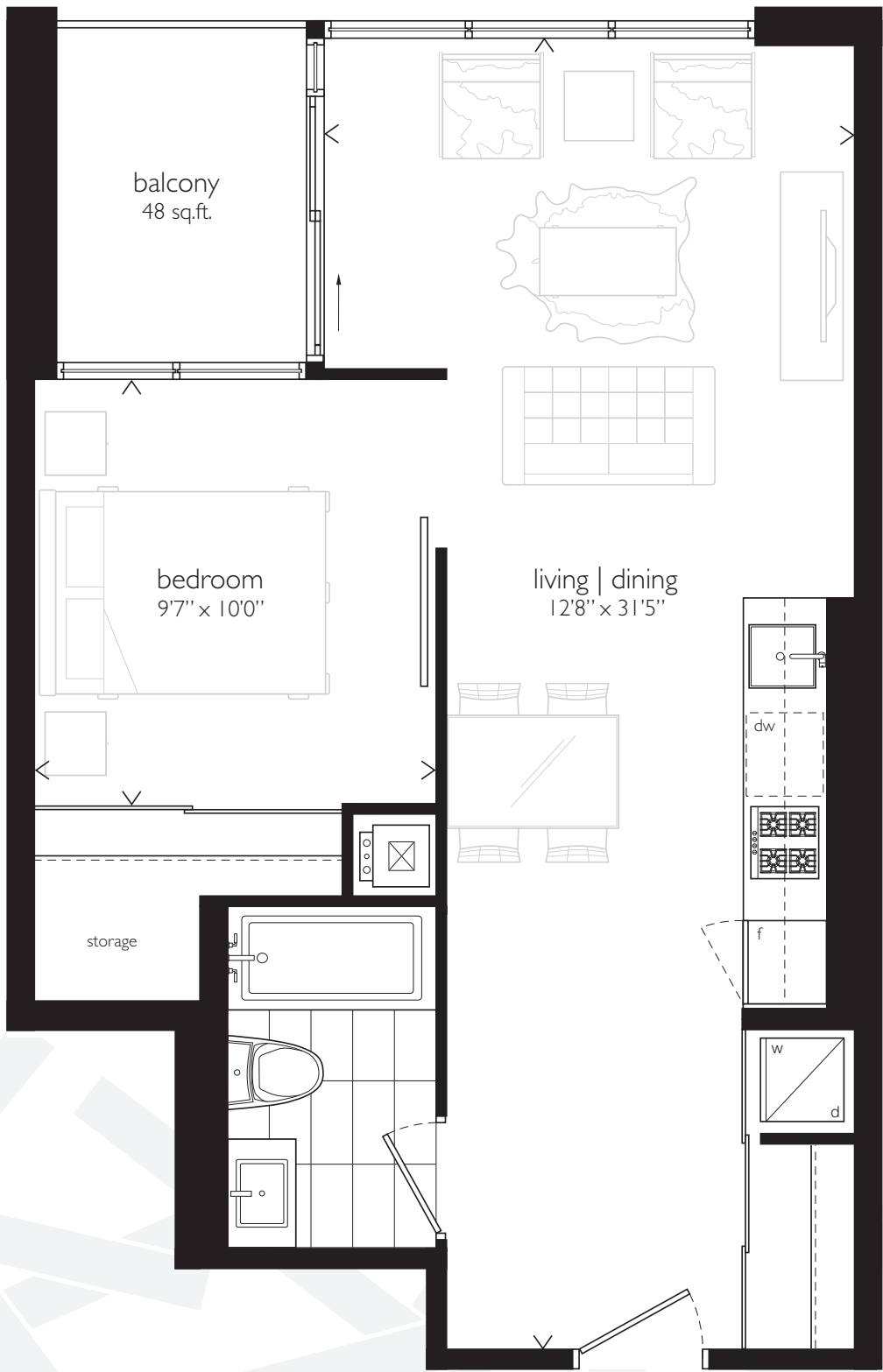


HOWARD PARK
RONCESVALLES VILLAGE

SIZES AND SPECIFICATIONS ARE SUBJECT TO CHANGE WITHOUT NOTICE. E & O E.

570 SQ.FT.

ONE BEDROOM
PLUS 48 SQ.FT. BALCONY



- 306
- 406
- 506
- 606
- 706
- 804
- 904

LEVELS 3-7



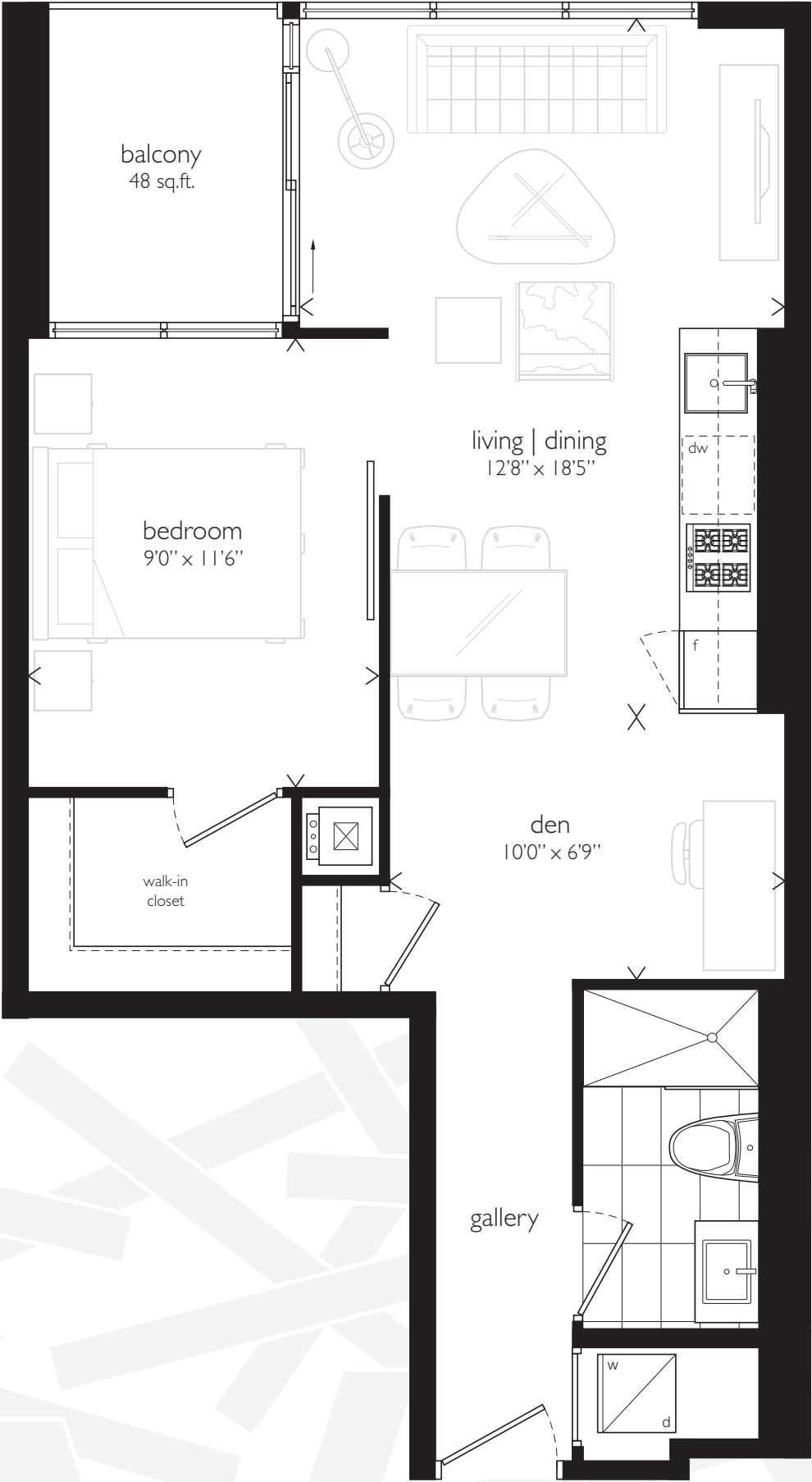
LEVELS 8-9



SIZES AND SPECIFICATIONS ARE SUBJECT TO CHANGE WITHOUT NOTICE. E & O E

609 SQ.FT.

ONR BEDROOM + DEN
PLUS 48 SQ.FT. BALCONY



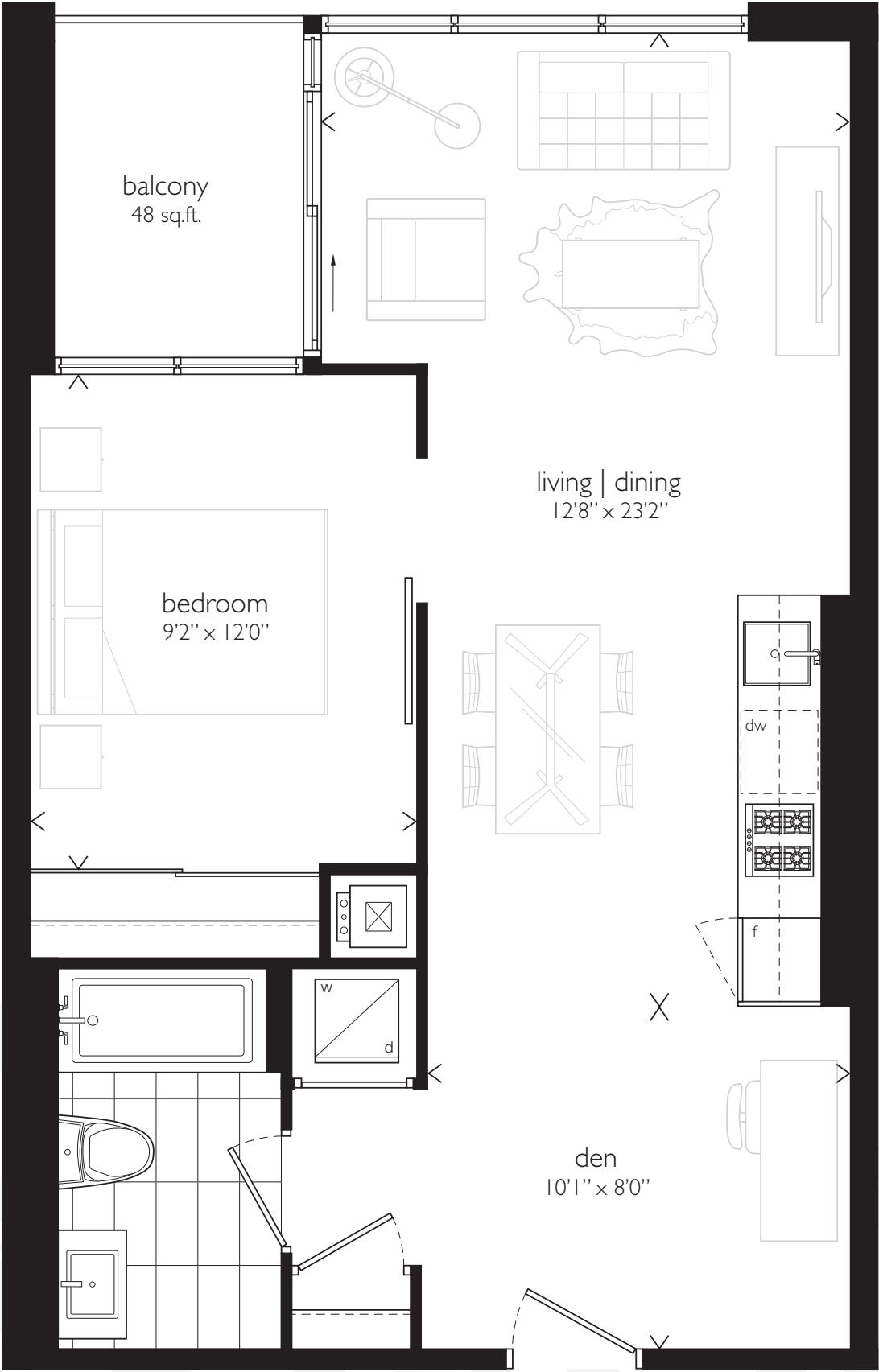
- 301
- 401
- 501
- 601
- 701
- 801
- 901

LEVELS 3-9



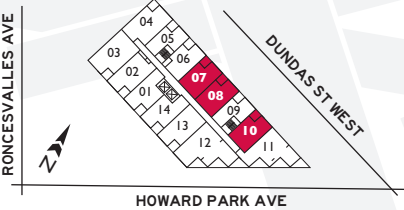
610 SQ.FT.

ONE BEDROOM + DEN
PLUS 48 SQ.FT. BALCONY



- 307
- 308
- 310
- 407
- 408
- 410
- 507
- 508
- 510
- 607
- 608

LEVELS 3-6

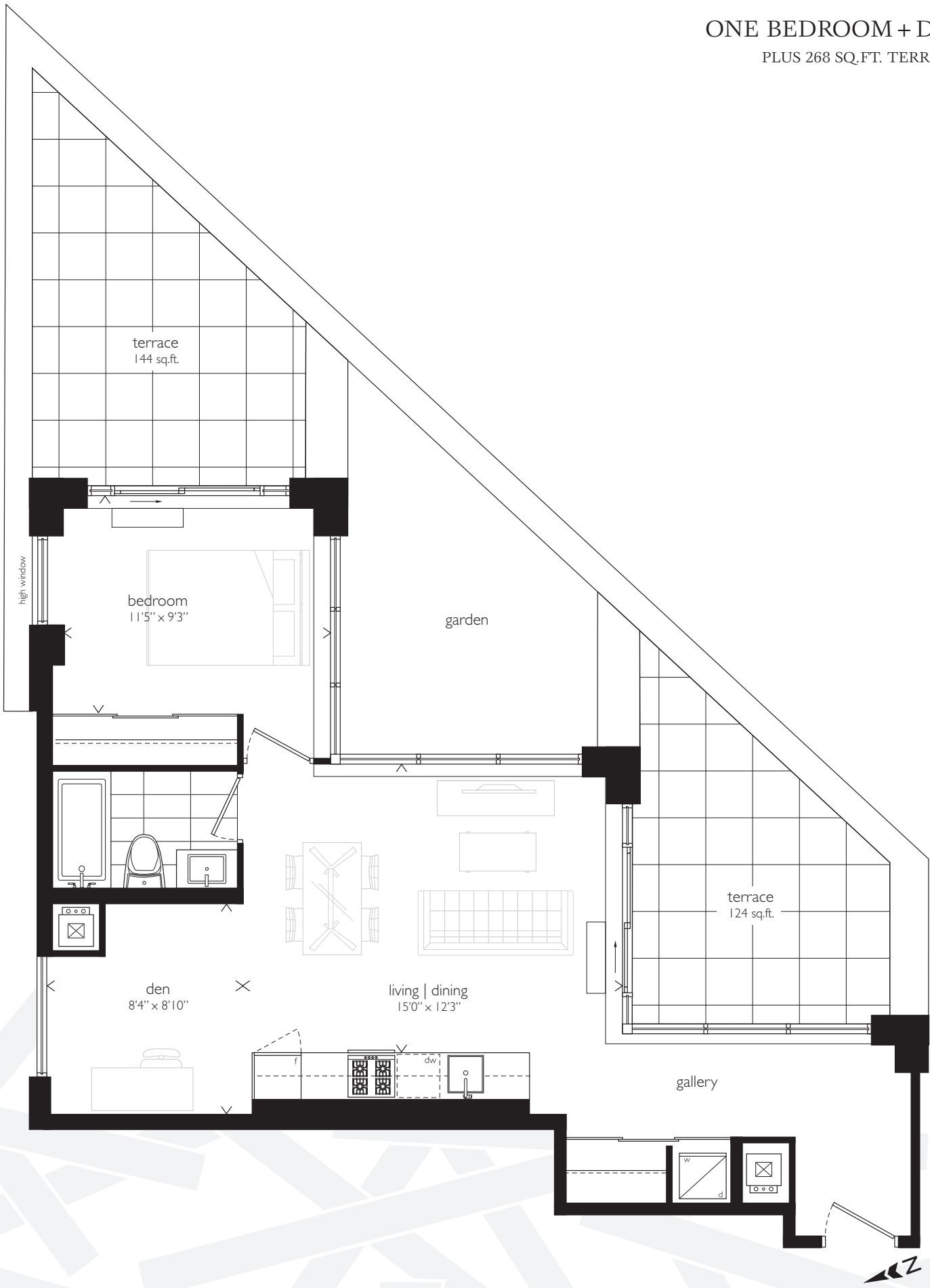


HOWARD PARK
RONCESVALLES VILLAGE

SIZES AND SPECIFICATIONS ARE SUBJECT TO CHANGE WITHOUT NOTICE. E & O E

670 SQ.FT.

ONE BEDROOM + DEN
PLUS 268 SQ.FT. TERRACES



611

LEVEL 6

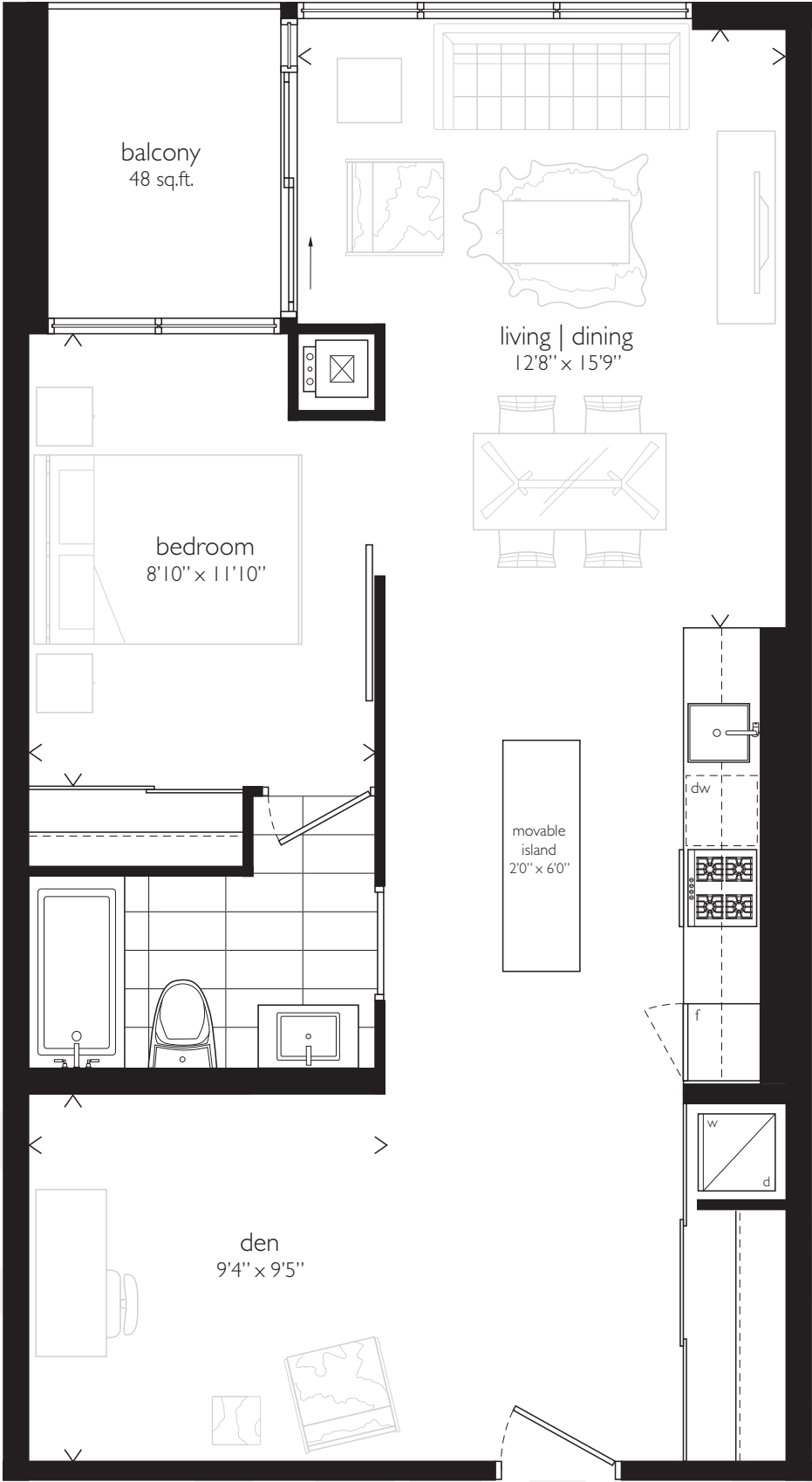


HOWARD PARK
RONCESVALLES VILLAGE

SIZES AND SPECIFICATIONS ARE SUBJECT TO CHANGE WITHOUT NOTICE. E & O E

722 SQ.FT.

ONE BEDROOM + DEN
PLUS 48 SQ.FT. BALCONY



313
413
513
613

LEVELS 3-6

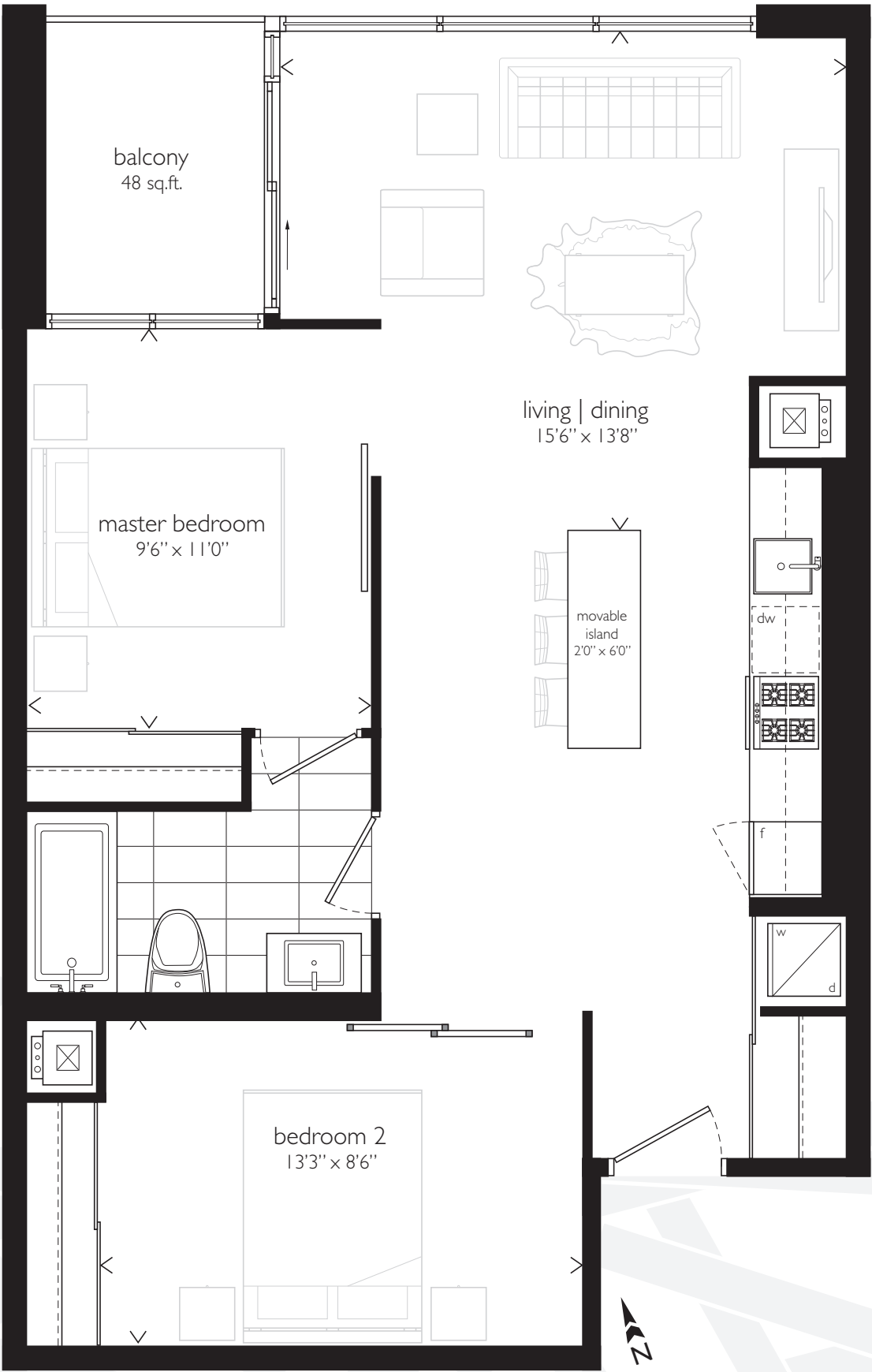


HOWARD PARK
RONCESVALLES VILLAGE

SIZES AND SPECIFICATIONS ARE SUBJECT TO CHANGE WITHOUT NOTICE. E & O E

823 SQ.FT.

TWO BEDROOM
PLUS 48 SQ.FT. BALCONY



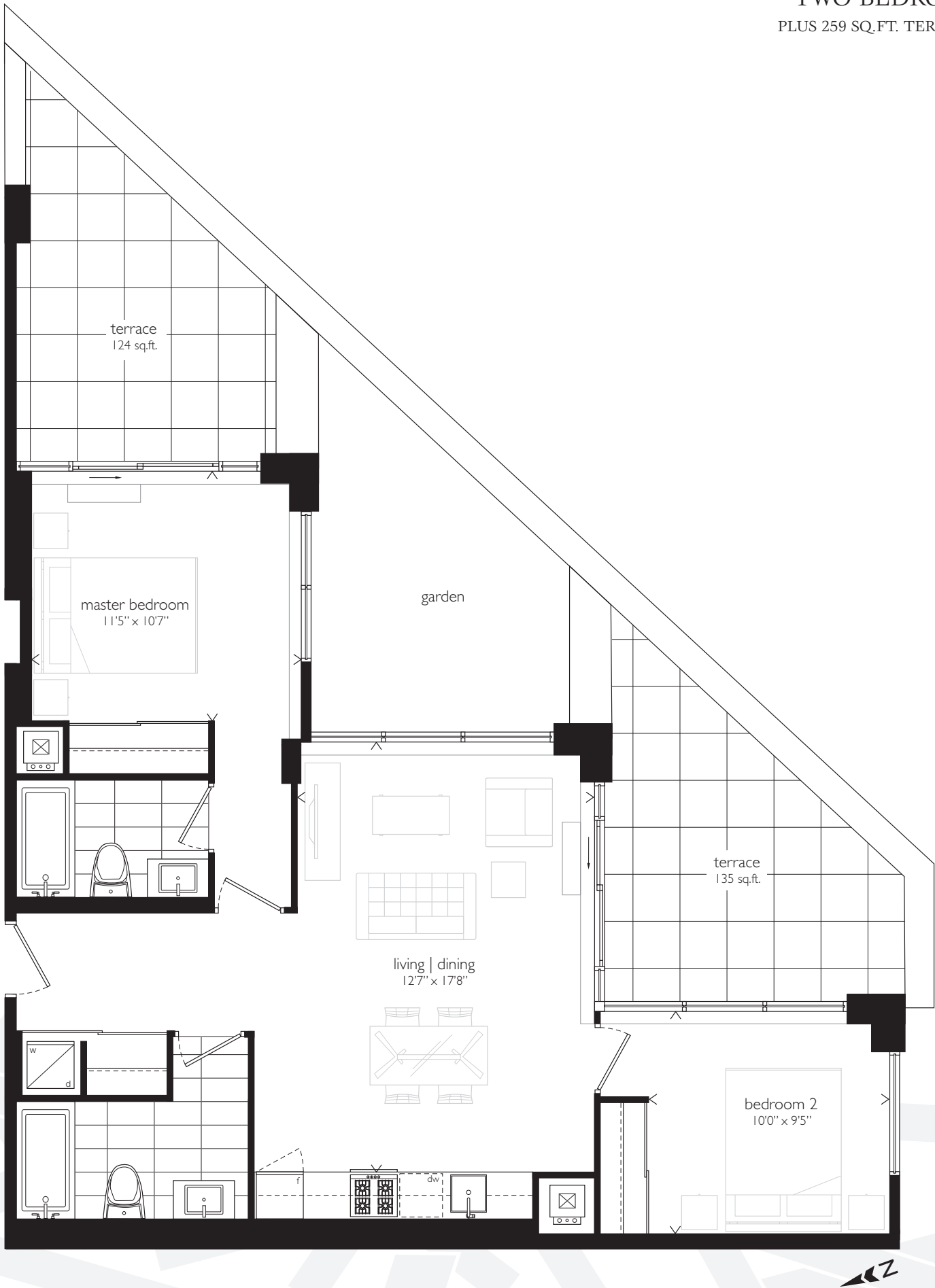
304
404
504
604
704

LEVELS 3-7



839 SQ.FT.

TWO BEDROOM
PLUS 259 SQ.FT. TERRACES



612

LEVEL 6

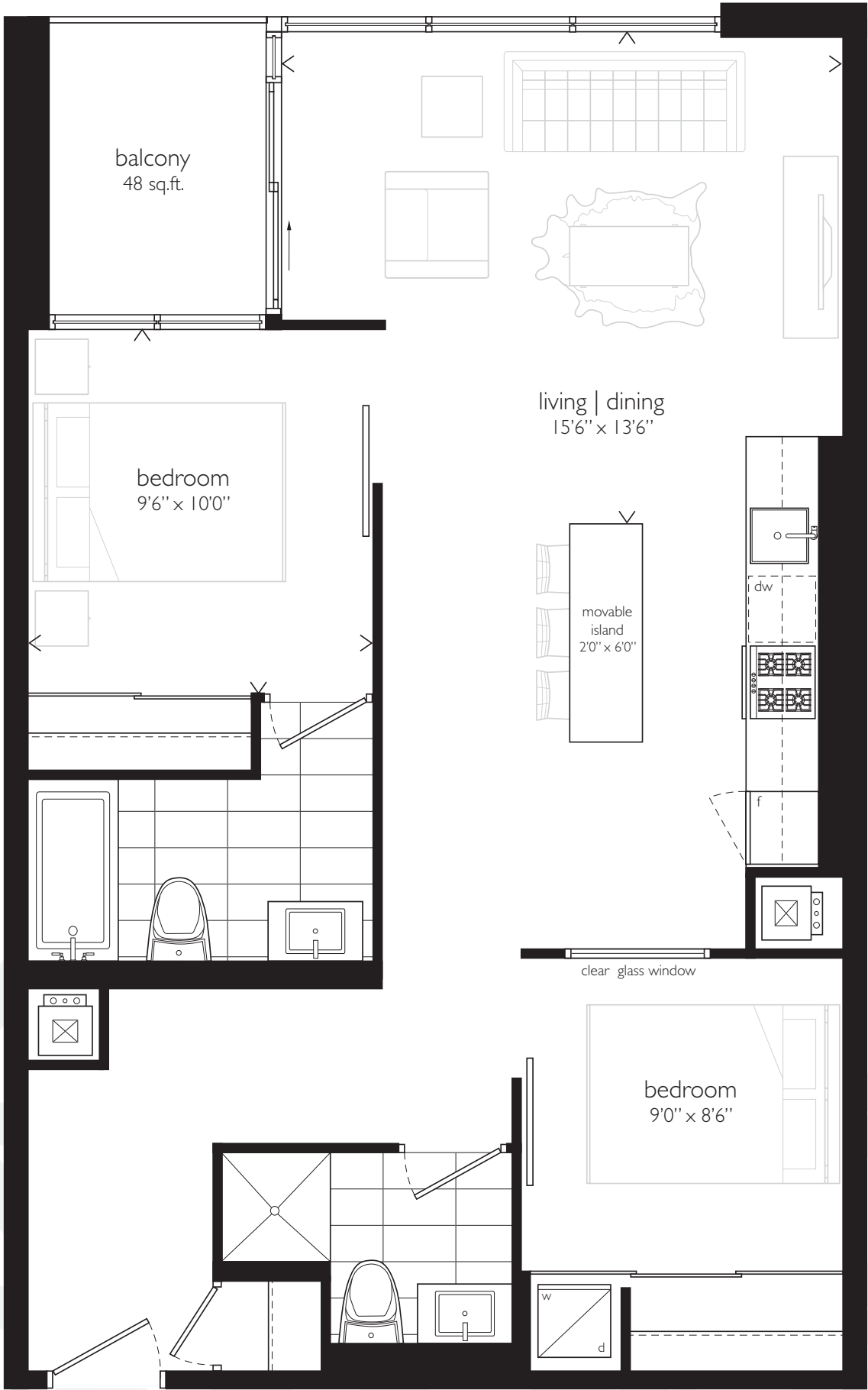


HOWARD PARK
RONCESVALLES VILLAGE

SIZES AND SPECIFICATIONS ARE SUBJECT TO CHANGE WITHOUT NOTICE. E & O E

847 SQ.FT.

TWO BEDROOM
PLUS 48 SQ.FT. BALCONY



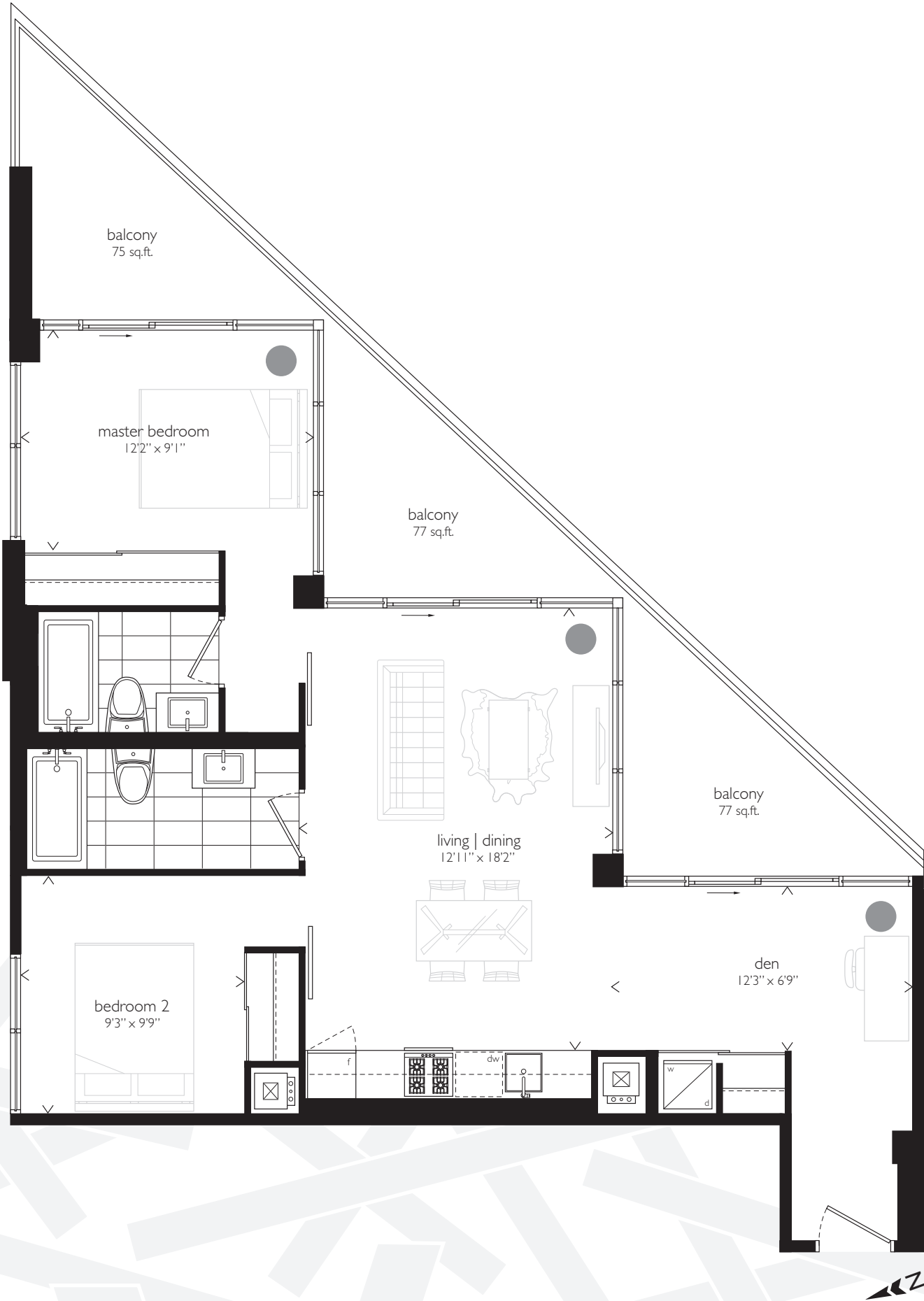
- 303
- 403
- 503
- 603
- 703

LEVELS 3-7



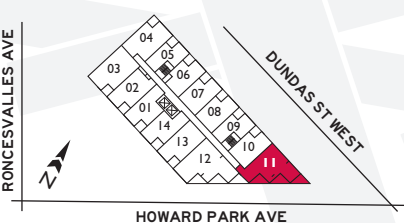
859 SQ.FT.

TWO BEDROOM + DEN
PLUS 229 SQ.FT. BALCONIES



311
411
511

LEVELS 3-5

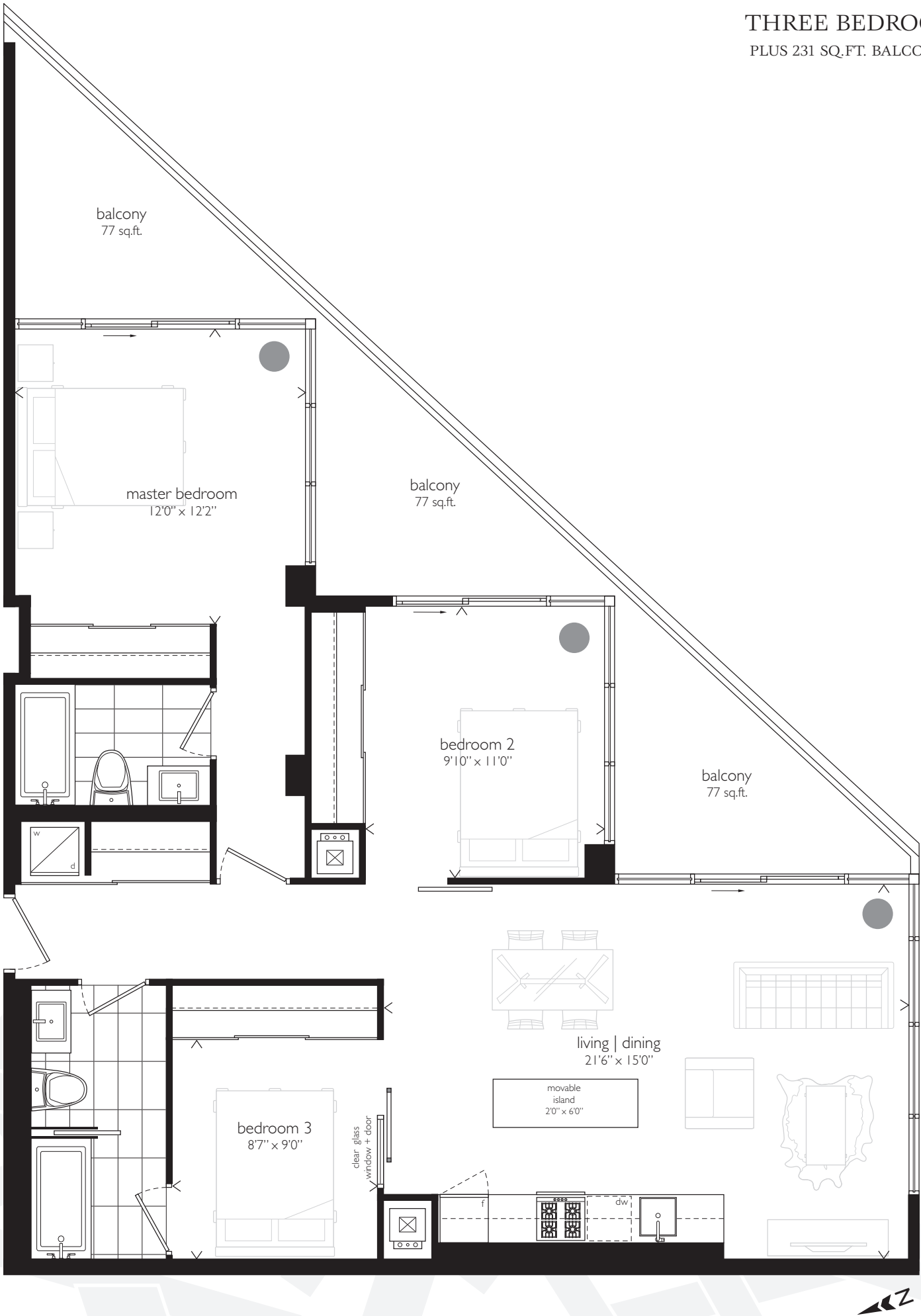


HOWARD PARK
RONCESVALLES VILLAGE

SIZES AND SPECIFICATIONS ARE SUBJECT TO CHANGE WITHOUT NOTICE. E & O E

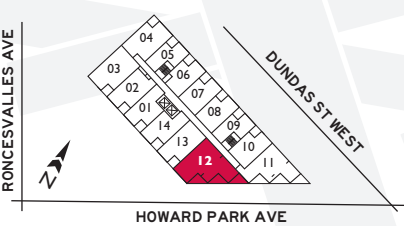
1,066 SQ.FT.

THREE BEDROOM
PLUS 231 SQ.FT. BALCONIES



312
412
512

LEVELS 3-5

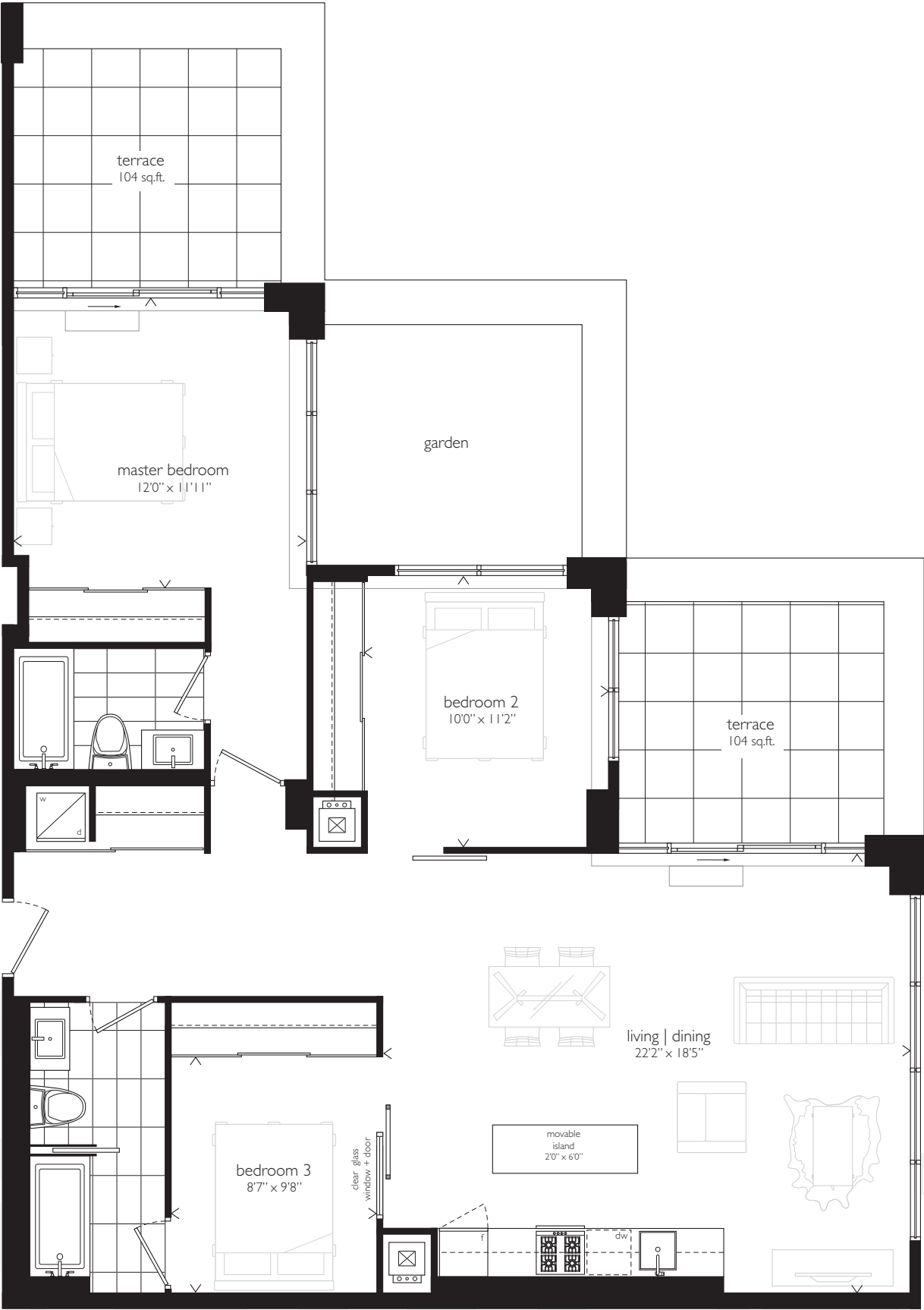


HOWARD PARK
RONCESVALLES VILLAGE

SIZES AND SPECIFICATIONS ARE SUBJECT TO CHANGE WITHOUT NOTICE. E & O E

1,173 SQ.FT.

THREE BEDROOM
PLUS 208 SQ.FT. TERRACES



710

LEVEL 7



HOWARD PARK
RONCESVALLES VILLAGE

SIZES AND SPECIFICATIONS ARE SUBJECT TO CHANGE WITHOUT NOTICE. E & O E

1,232 SQ.FT.

TWO BEDROOM + DEN
PLUS 201 SQ.FT. TERRACES

807



LEVEL 8



THE FINISHING TOUCHES

FEATURES AND FINISHES

HOWARD PARK

- ✕ Contemporary ten-storey urban architectural design; exterior terraced facade created by using bold clay brick, large sheets of glass and metal-wall cladding systems
- ✕ The top of the building will have a green roof to mitigate the 'heat island effect'
- ✕ Oversized terraces with parapet walls for additional privacy[†]
- ✕ Terraces step back from the facade to take advantage of panoramic city views[†]
- ✕ Balconies with contemporary glass railing systems[†]
- ✕ Landscaped gardens high up in the sky on the terraced levels[†]
- ✕ Two-storey Urban Towns with exclusive street level patios[†]
- ✕ Spacious and modern designed courtyard with manicured greens, contemporary benches, highlighted by a bright red sculpture interpreting a collection of mature trees
- ✕ Courtyard leads to the glass lobby which opens up internally to an exterior vertical structural extension comprising of a living green wall and red accents
- ✕ Indoor amenity space includes a party/lounge flex space, media room and fitness wellness centre that overlooks the courtyard
- ✕ Bicycle storage
- ✕ Residence concierge service

RESIDENCES

- ✕ Solid core suite entry door with security viewer and contemporary lever hardware
- ✕ 9 ft clear smooth ceilings in living spaces on levels 2-8[†]
- ✕ 10 ft clear smooth ceiling in living spaces on levels 9-10[†]
- ✕ Wood or glass sliding doors[†]
- ✕ Engineered hardwood flooring[†] from builder's samples, except for tiled areas
- ✕ All drywall, doors and trim primed and painted in a latex low VOC paint
- ✕ 4" baseboards and 2 1/2" door casings[†]
- ✕ Vinyl coated wire shelving in all closets and storage areas[†]

INSPIRED KITCHENS

- ✕ Stone countertop, from builder's samples[†]
- ✕ Two-toned European inspired flat slab kitchen cabinetry with lacquered uppers and wood veneer lowers, from builder's samples[†]
- ✕ Upgraded hardware for base and upper cabinetry
- ✕ Single under-mount stainless steel sink
- ✕ Single lever deck mounted faucet
- ✕ Split electrical outlets installed at counter level for countertop appliances
- ✕ PREMIUM APPLIANCE PACKAGE that includes: Canopy style stainless steel hood fan; fully integrated dishwasher; frost-free refrigerator/freezer; a gas cooktop and a built-in oven

LUXURIOUS BATHROOMS

- ✕ European style bathroom vanity, from builder's samples[†]
- ✕ Stone countertop, from builder's samples
- ✕ Contemporary rectangular vessel sink
- ✕ Tiled floors, tub and shower surround, from builder's samples[†]
- ✕ 5 ft deep soaker tub or frameless shower[†]
- ✕ Frameless mirror over vanity
- ✕ Single-lever faucet for vanities
- ✕ Pressure balance valve in all tub/showers

CONVENIENT LAUNDRY

- ✕ Stacked washer and dryer
- ✕ Tiled floor[†]

MECHANICAL & ELECTRICAL SYSTEMS

- ✕ Individually controlled forced air heating and cooling system
- ✕ White Décora-style electrical switches, receptacles and plates throughout
- ✕ Switch-controlled split wall outlet in all bedrooms and dens[†]
- ✕ Capped ceiling outlet in dining area

MULTIMEDIA TECHNOLOGY

- ✕ Rough-in wiring for telephone and internet outlets in kitchen, living/dining room, den and bedroom[†]
- ✕ Rough-in wiring for cable TV outlets in living room, master bedroom, and secondary bedroom[†]

PEACE OF MIND

- ✕ Surveillance cameras in select areas of underground garage
- ✕ Motion-controlled lights in garbage chutes rooms and other applicable areas
- ✕ In-suite fire alarm speaker (with silencer) and heat detector connected to fire alarm panel
- ✕ In-suite hard wired smoke detector
- ✕ Electronic access control system for recreation amenities, parking garage and other common areas
- ✕ Electronic communication system located in the secure main vestibule. Guests can be viewed on the resident's television
- ✕ Individual suite metering for measuring hydro consumption
- ✕ Full TARIION Warranty Coverage

† - as per plan

NOTE:
Vendor may substitute materials for those shown in the Plans and Specifications, provided such materials in the sole opinion of the Vendor's consultant or of at least comparable quality. Model suites, displays, marketing materials and Schedule "B"s may include finishes that are upgrades and are not included in the purchase price. These upgrades may be offered at extra cost at time of colour selection or may not be available. Where brand names are specified, the Vendor, in its sole discretion, may substitute with similar product of at least equal quality from another manufacturer. Appliances locations shown on Schedule "B"s may vary. E.&O.E.