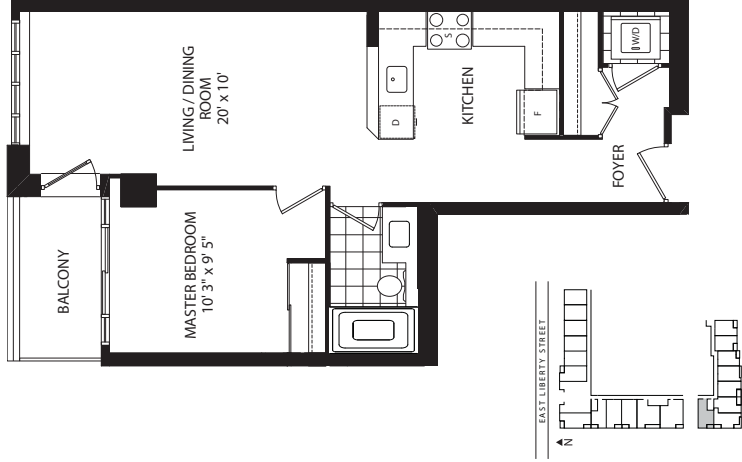


6 Pirandello

Suite 223

1 Bedroom
610 sq. ft.

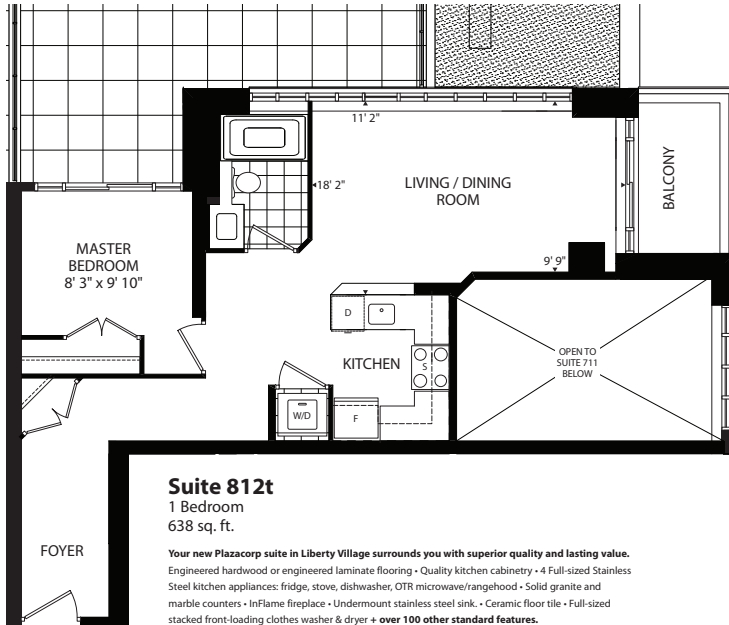
Spacious entrance foyer with generous, oversized closet space • Manhattan-style U-shaped open concept kitchen with solid granite countertops and your choice of designer kitchen cabinetry • Magnificent master bedroom with deep full sized closet and direct access to balcony • Beautifully appointed full sized bath • Gracious living/dining area with walk out to balcony



Room sizes and dimensions shown are approximate and measured in accordance with accepted industry methods, standards and practices. Specifications subject to change without notice. (B.C.)



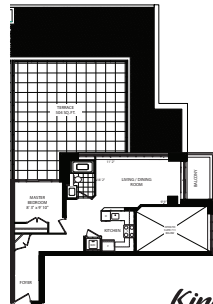
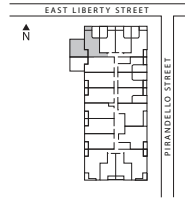
King West
CONDOMINIUMS
in Liberty Village
Phase I



Suite 812t
 1 Bedroom
 638 sq. ft.

Your new Plazacorp suite in Liberty Village surrounds you with superior quality and lasting value. Engineered hardwood or engineered laminate flooring • Quality kitchen cabinetry • 4 Full-sized Stainless Steel kitchen appliances: fridge, stove, dishwasher, OTR microwave/rangehood • Solid granite and marble counters • InFlame fireplace • Undermount stainless steel sink • Ceramic floor tile • Full-sized stacked front-loading clothes washer & dryer + over 100 other standard features.

Room sizes and dimensions shown are approximate and measured in accordance with accepted industry methods, standards and practices. Specifications subject to change without notice. E&OE.



King West



Phase III

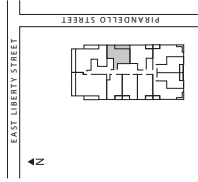
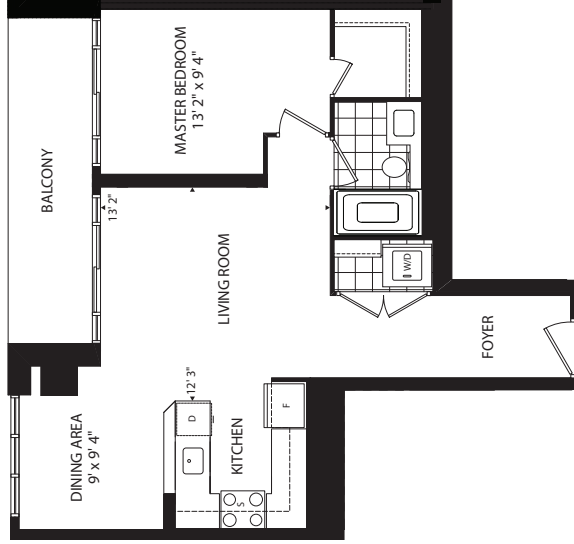
CONDOMINIUMS
 in Liberty Village

65 East Liberty St.

Suite 1917 to 2317

1 Bedroom
638 sq. ft.

Your new Plazacorp suite in Liberty Village surrounds you with superior quality and lasting value.
Engineered hardwood or engineered laminate flooring • Quality kitchen cabinetry • 4 Full-sized Stainless Steel kitchen appliances: fridge, stove, dishwasher, OTR microwave/rangehood • Solid granite and marble counters • In-Flame Fireplace • Undermount stainless steel sink • Ceramic floor tile • Full-sized stacked front-loading clothes washer & dryer • **over 100 other standard features.**



Room size and dimensions shown are approximate and measured in accordance with accepted industry methods, standard and practices. Specifications subject to change without notice. ©2012



CONDOMINIUMS
in Liberty Village

65 East Liberty St.

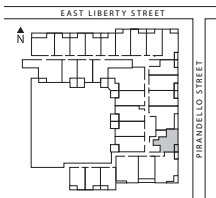
Suite 301

1 Bedroom

682 sq. ft.

Your new Plazacorp suite in Liberty Village surrounds you with superior quality and lasting value.

Engineered hardwood or engineered laminate flooring • Quality kitchen cabinetry • 4 Full-sized Stainless Steel kitchen appliances: fridge, stove, dishwasher, OTR microwave/rangehood • Solid granite and marble counters • InFlame fireplace • Undermount stainless steel sink • Ceramic floor tile • Full-sized stacked front-loading clothes washer & dryer • **+ over 100 other standard features.**



King West



Phase III

CONDOMINIUMS
in Liberty Village

65 East Liberty St.

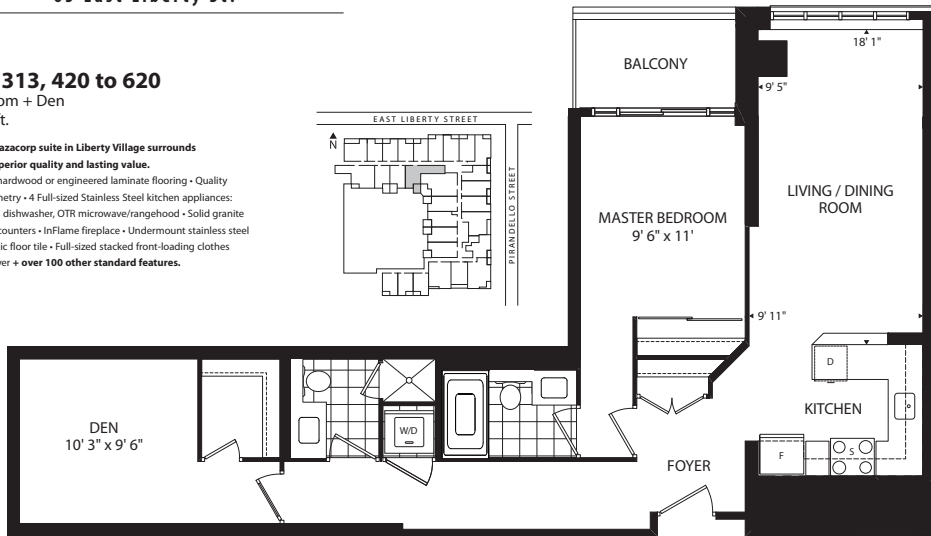
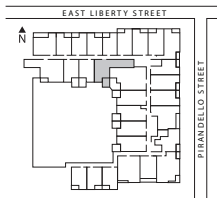
Suite 313, 420 to 620

1 Bedroom + Den

869 sq. ft.

Your new Plazacorp suite in Liberty Village surrounds you with superior quality and lasting value.

Engineered hardwood or engineered laminate flooring • Quality kitchen cabinetry • 4 Full-sized Stainless Steel kitchen appliances: fridge, stove, dishwasher, OTR microwave/rangehood • Solid granite and marble counters • InFlame fireplace • Undermount stainless steel sink • Ceramic floor tile • Full-sized stacked front-loading clothes washer & dryer + **over 100 other standard features.**



Room sizes and dimensions shown are approximate and measured in accordance with accepted industry methods, standards and practices. Specifications subject to change without notice. E&OE.

King West



Phase III

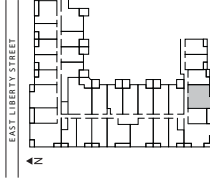
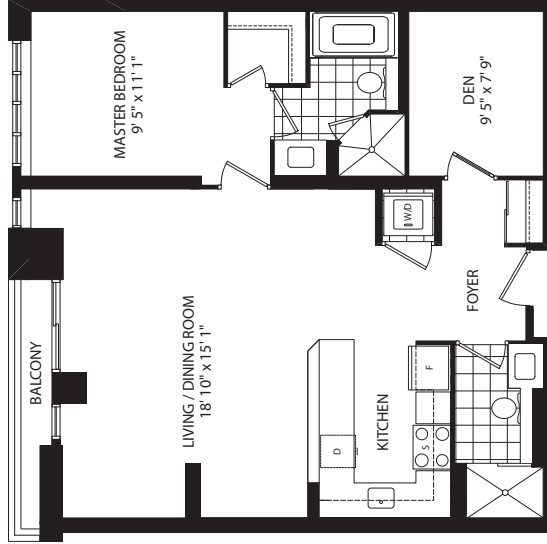
CONDOMINIUMS
in Liberty Village

85 East Liberty St.

Suite 306

1 Bedroom + Den
888 sq. ft.

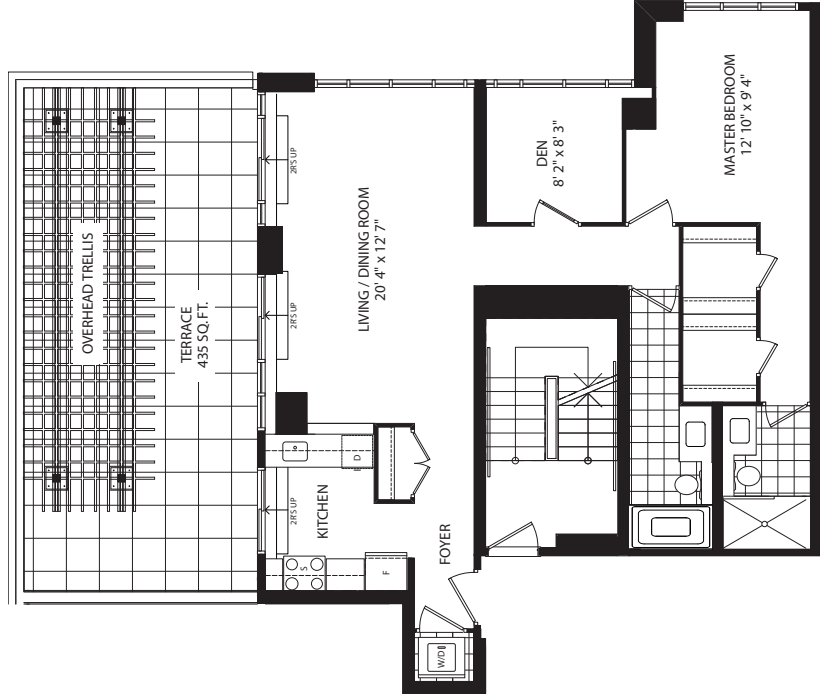
Spacious entrance foyer • Manhattan-style U shaped open concept kitchen with solid granite countertops and your choice of designer kitchen cabinetry • Magnificent master bedroom with walk in closet and beautifully appointed full sized bath • Full sized den • Gracious living/dining area with walk-out to balcony



King West
CONSTRUCTION
CORPORATION

Phase I

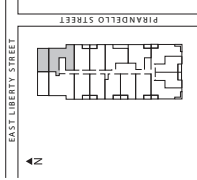
Room sizes and dimensions shown are approximate and measured in accordance with the adopted industry method, standards and practices. Specifications subject to change without notice. B.C.C.



65 East Liberty St.

Suite 1414t

1 Bedroom + Den
940sq. ft.



Your new Plazacorp suite in Liberty Village surrounds you with superior quality and lasting value. Engineered hardwood or engineered laminate flooring • Quality kitchen cabinetry • 4 Full-sized Stainless Steel kitchen appliances: fridge, stove, dishwasher, OTR microwave/rangehood • Solid granite and marble counters • InFlame fireplace • Undermount stainless steel sink. • Ceramic floor tile • Full-sized stacked front-loading clothes washer & dryer

+ over 100 other standard features.

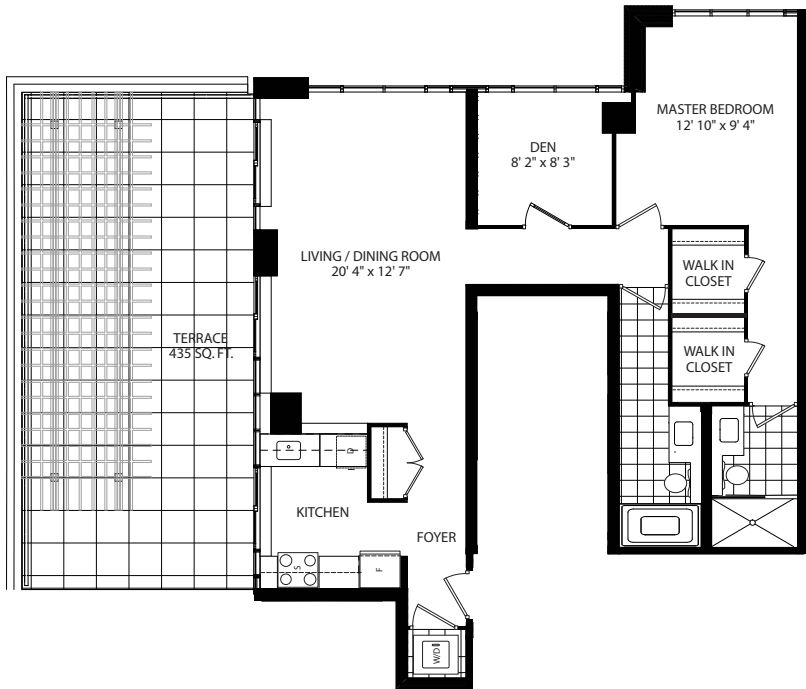
King West



Phase III

Room sizes and dimensions shown are approximate and may vary in accordance with accepted industry methods, standards and practices. Specifications subject to change without notice. ©CC.

CONDOMINIUMS
in Liberty Village



75 East Liberty St.

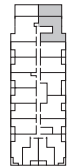
Suite 1415t

1 Bedroom + Den
943 sq. ft.

Your new Plazacorp suite in Liberty Village surrounds you with superior quality and lasting value.

- Engineered hardwood or engineered laminate flooring
- Quality kitchen cabinetry
- 4 Full-sized Stainless Steel kitchen appliances: fridge, stove, dishwasher, OTR microwave/rangehood
- Solid granite and marble counters
- InFlame fireplace
- Undermount stainless steel sink
- Ceramic floor tile
- Full-sized stacked front-loading clothes washer & dryer
- **over 100 other standard features.**

EAST LIBERTY STREET

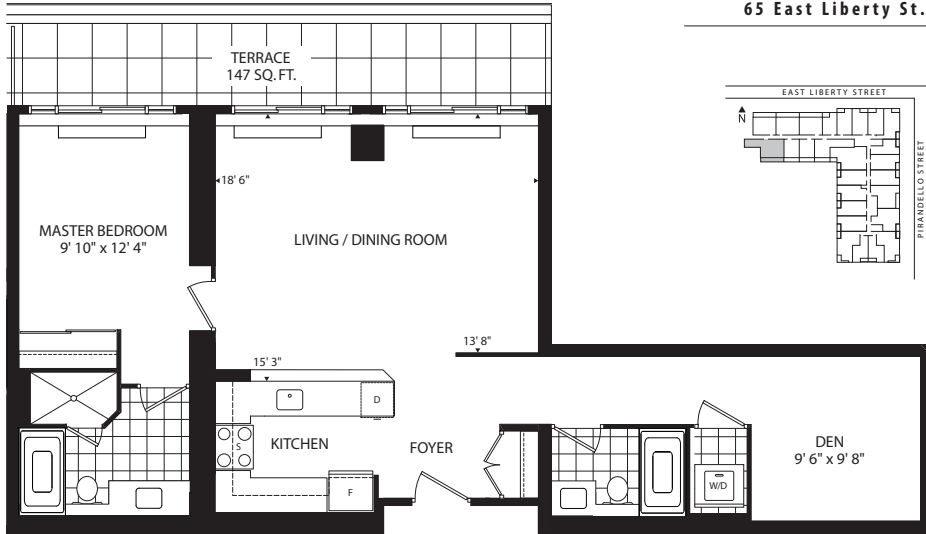


Room sizes and dimensions shown are approximate and measured in accordance with accepted industry methods, standards and practices. Specifications subject to change without notice. E&OE.



King West
CONDOMINIUMS
in Liberty Village
PHASE II

65 East Liberty St.



Suite 723t
1 Bedroom + Den
949 sq. ft.

Your new Plazacorp suite in Liberty Village surrounds you with superior quality and lasting value. Engineered hardwood or engineered laminate flooring • Quality kitchen cabinetry • 4 Full-sized Stainless Steel kitchen appliances: fridge, stove, dishwasher, OTR microwave/rangehood • Solid granite and marble counters • InFlame fireplace • Undermount stainless steel sink • Ceramic floor tile • Full-sized stacked front-loading clothes washer & dryer + **over 100 other standard features.**

Room sizes and dimensions shown are approximate and measured in accordance with accepted industry methods, standards and practices. Specifications subject to change without notice. E&OE.

King West



Phase III

CONDOMINIUMS
in Liberty Village

65 East Liberty St.

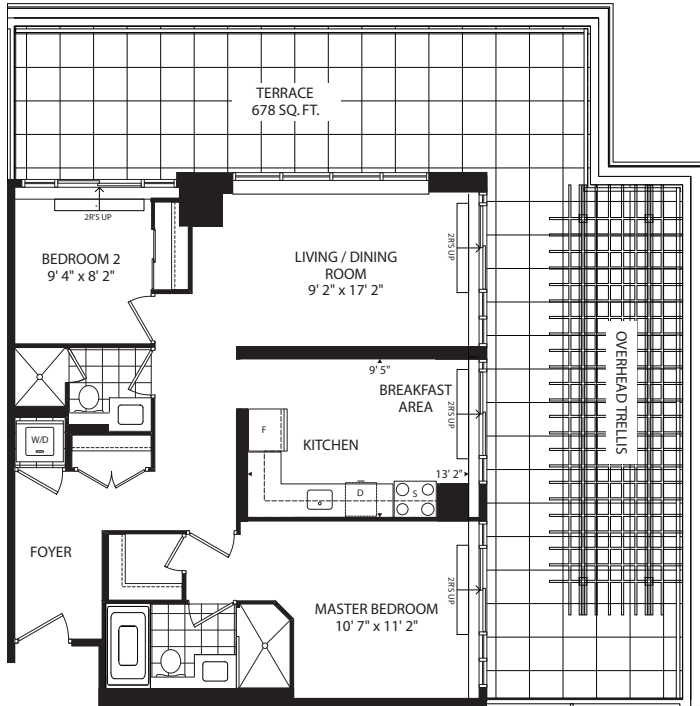
Suite 1112t

2 Bedroom

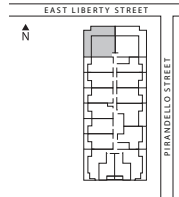
881 sq. ft.

Your new Plazacorp suite in Liberty Village surrounds you with superior quality and lasting value.

Engineered hardwood or engineered laminate flooring • Quality kitchen cabinetry • 4 Full-sized Stainless Steel kitchen appliances: fridge, stove, dishwasher, OTR microwave/rangehood • Solid granite and marble counters • In-Flame fireplace • Undermount stainless steel sink • Ceramic floor tile • Full-sized stacked front-loading clothes washer & dryer
+ over 100 other standard features.



Room size and dimensions shown are approximate and measured in accordance with accepted industry methods, standard and practices. Specifications subject to change without notice. E&OE.



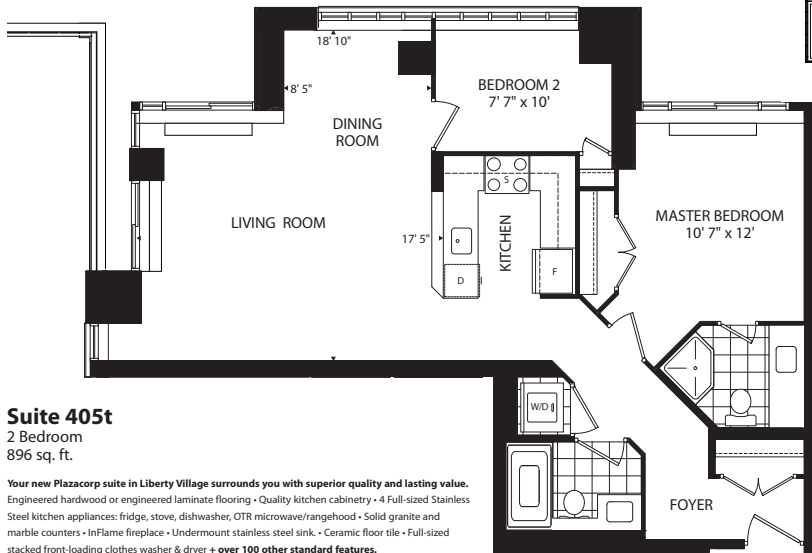
King West



Phase III

CONDOMINIUMS
in Liberty Village

65 East Liberty St.



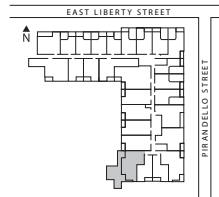
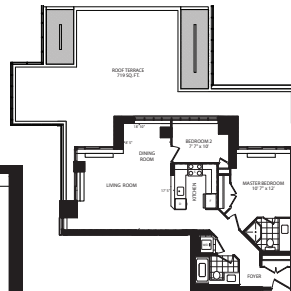
Suite 405t

2 Bedroom

896 sq. ft.

Your new Plazacorp suite in Liberty Village surrounds you with superior quality and lasting value.

Engineered hardwood or engineered laminate flooring • Quality kitchen cabinetry • 4 Full-sized Stainless Steel kitchen appliances: fridge, stove, dishwasher, OTR microwave/rangehood • Solid granite and marble counters • InFlame fireplace • Undermount stainless steel sink • Ceramic floor tile • Full-sized stacked front-loading clothes washer & dryer + **over 100 other standard features.**



King West



Phase III

CONDOMINIUMS
in Liberty Village

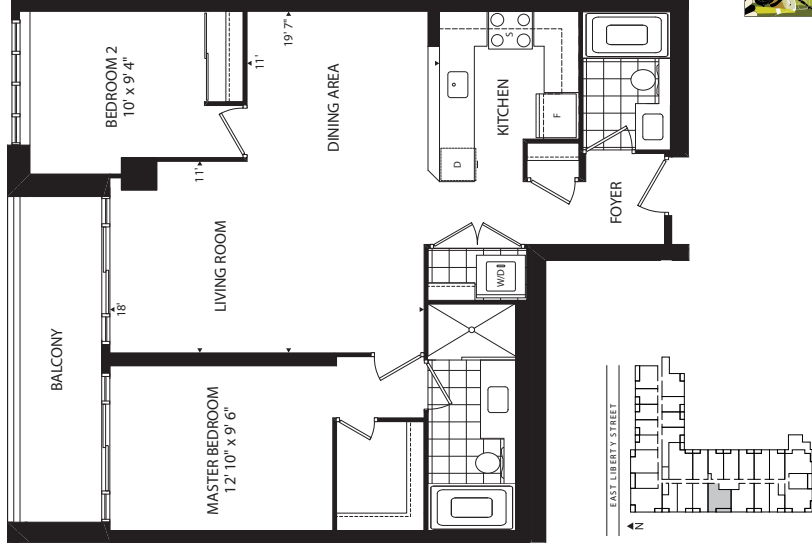
Room sizes and dimensions shown are approximate and measured in accordance with accepted industry methods, standards and practices. Specifications subject to change without notice. E&OE.

85 East Liberty St.

Suite 421 to 1021

2 Bedroom
931 sq. ft.

Spacious entrance foyer with powder room and generous, oversized closet space • Manhattan-style U-shaped open concept kitchen with solid granite countertops and your choice of designer kitchen cabinetry • Gracious living/dining area with walk out to oversized balcony • Magnificent master bedroom with walk in closet, beautifully appointed full sized bath and direct access to balcony • Full sized second bedroom with deep full sized closet

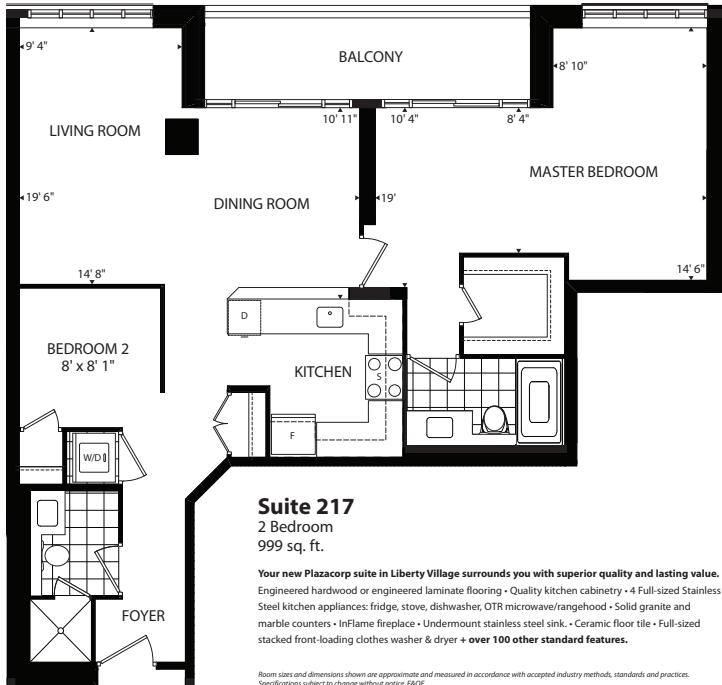


Room sizes and dimensions shown are approximate and measured in accordance with accepted industry methods, standards and practices. Specifications subject to change without notice. EDC.



King West
COMMUNITIES
in Liberty Village

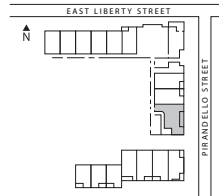
Phase I



Suite 217
 2 Bedroom
 999 sq. ft.

Your new Plazacorp suite in Liberty Village surrounds you with superior quality and lasting value. Engineered hardwood or engineered laminate flooring • Quality kitchen cabinetry • 4 Full-sized Stainless Steel kitchen appliances: fridge, stove, dishwasher, OTR microwave/rangehood • Solid granite and marble counters • InFlame fireplace • Undermount stainless steel sink • Ceramic floor tile • Full-sized stacked front-loading clothes washer & dryer + **over 100 other standard features.**

Room sizes and dimensions shown are approximate and measured in accordance with accepted industry methods, standards and practices. Specifications subject to change without notice. E&OE.



King West



Phase III

CONDOMINIUMS
 in Liberty Village

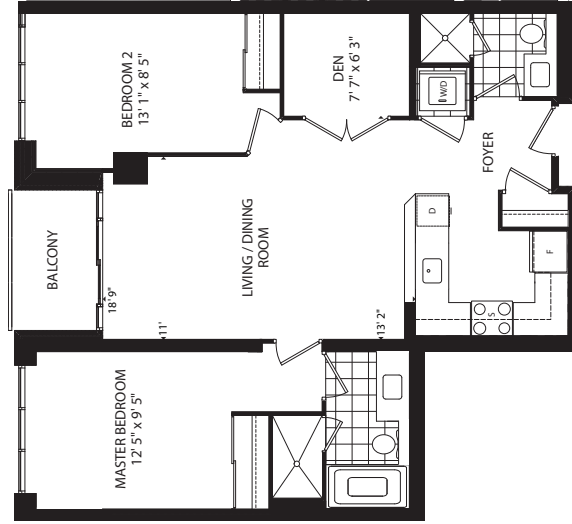


King West
CONDOMINIUMS
In Liberty Village
PHASE II

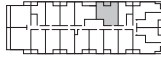
75 East Liberty St.

Suite 1201-2401

2 Bedroom + Den
889 sq. ft.



EAST LIBERTY STREET



Room sizes and dimensions shown are approximate and measured in accordance with accepted industry methods, standards and practices. Specifications subject to change without notice. E&OE.



PLAZACORP
Urban Residential Communities

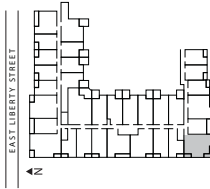
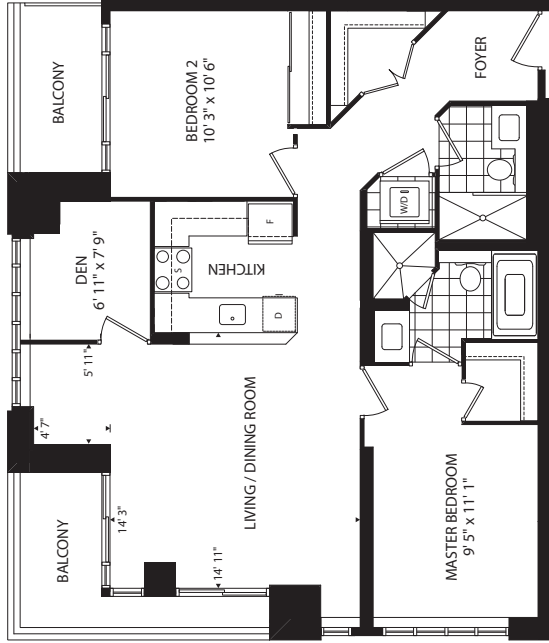
85 East Liberty St.

Suite 304 to 904

2 Bedroom + Den

990 sq. ft.

Spacious entrance foyer with walk in closet - Manhattan-style U shaped open concept kitchen with solid granite countertops and your choice of designer kitchen cabinetry - Magnificent master bedroom with walk in closet and beautifully appointed full sized bath - Full sized second bedroom with direct access to private oversized balcony - Gracious living/dining area with spacious den and walk out to oversized private corner balcony



King West
HOMES
A LIBERTY BUILDING

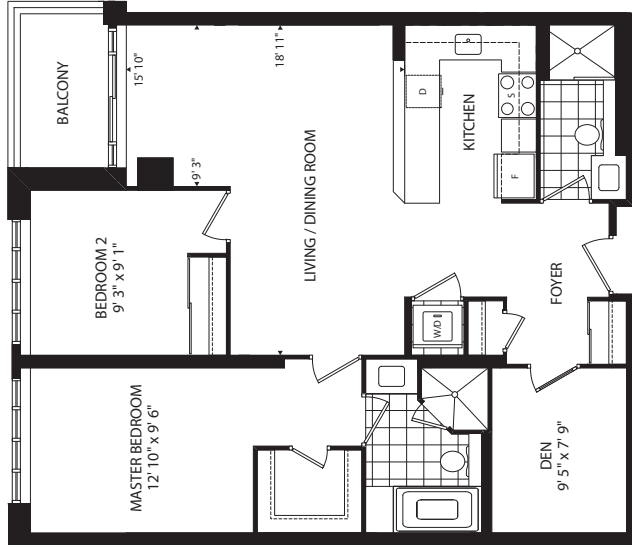
Phase I

Room sizes and dimensions shown are approximate and measured in accordance with local industry methods, standards and practices. Specifications subject to change without notice. BAC

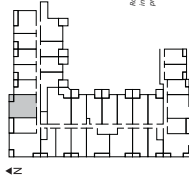
85 East Liberty St.

Suite 326 2 Bedroom + Den 1019 sq. ft.

Spacious entrance foyer with easy access to second bath - Manhattan-style U shaped open concept kitchen with solid granite countertops and your choice of designer kitchen cabinetry - Magnificent master bedroom with walk in closet and beautifully appointed full sized bath - Full sized second bedroom with deep, full sized closet - Gracious living/dining area with spacious den and walk out to oversized balcony



EAST LIBERTY STREET



Room size and dimensions shown are approximate and measured in accordance with applicable standards and industry practices. Specifications subject to change without notice. ©KOE.



King West
COMMUNITIES
in Liberty Village

Phase I

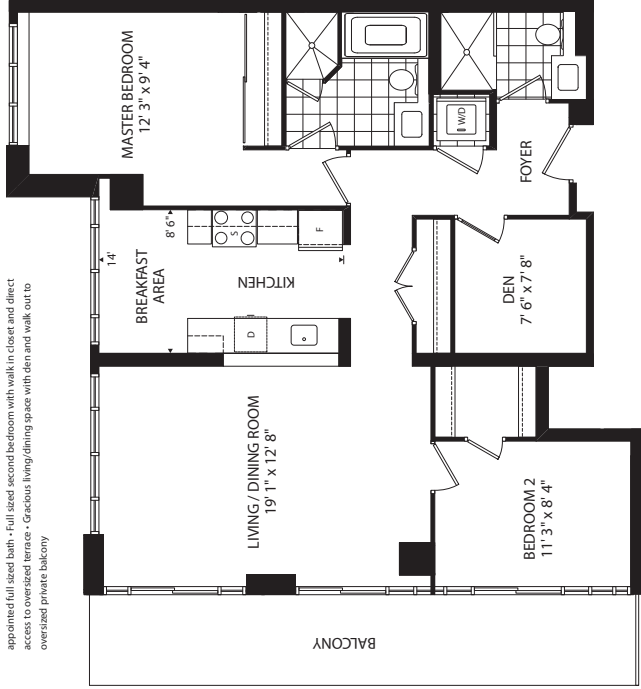
85 East Liberty St.

Suite 1514

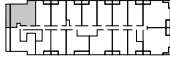
2 Bedroom + Den

1028 sq. ft.

Spacious entrance foyer with generous full sized closet space • Manhattan-style open concept kitchen with solid granite countertops and your choice of designer kitchen cabinetry • Magnificent master bedroom with deep full sized closet and beautifully appointed full sized bath • Full sized second bedroom with walk in closet and direct access to oversized terrace • Gracious living/dining space with den and walk out to oversized private balcony



EAST LIBERTY STREET



Room sizes and dimensions shown are approximate and may vary slightly due to fielding and construction methods, standards and practices. Specifications subject to change without notice. BOE.



King West
CONDOMINIUMS
in Liberty Village

Phase I

85 East Liberty St.

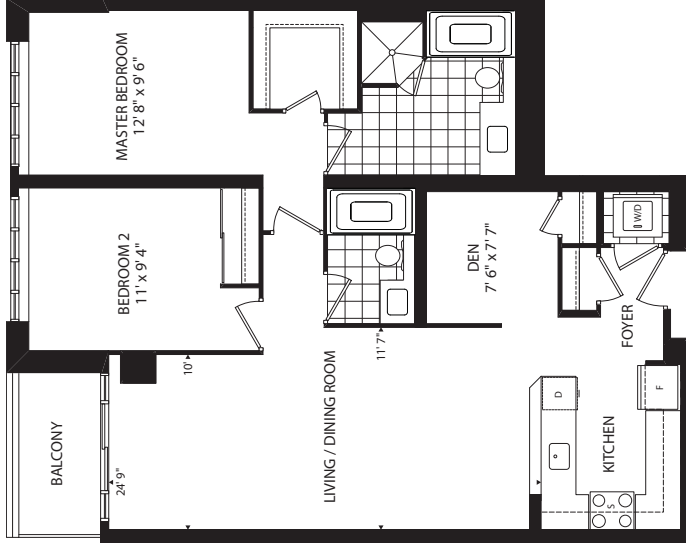
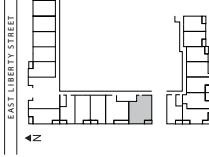
Suite 201 to 1001

2 Bedroom + Den

1044 sq. ft.

Spacious entrance foyer with generous, oversized closet space • Manhattan-style U-shaped open concept kitchen with solid granite countertops and your choice of designer kitchen cabinetry • Magnificent master bedroom with walk in closet and beautifully appointed full sized bath • Full sized second bedroom with convenient access to second bath

• Gracious living/dining area with spacious den and walk out to balcony



King West
CONDOMINIUMS
- LIBERTY WING -

Phase I

Room sizes and dimensions shown are approximate and measured in accordance with the carpet industry method, standards and practices. Specifications subject to change without notice. B.C.C.

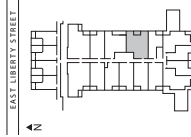
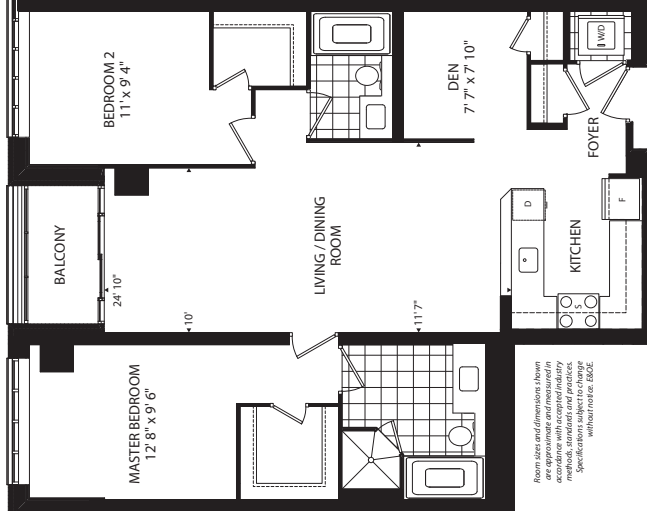


75 East Liberty St.

Suite 401-1001

2 Bedroom + Den
1,049 sq. ft.

King West
CONDOMINIUMS
In Liberty Village
PHASE II

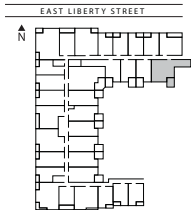


PLAZACORP
Urban Residential Communities

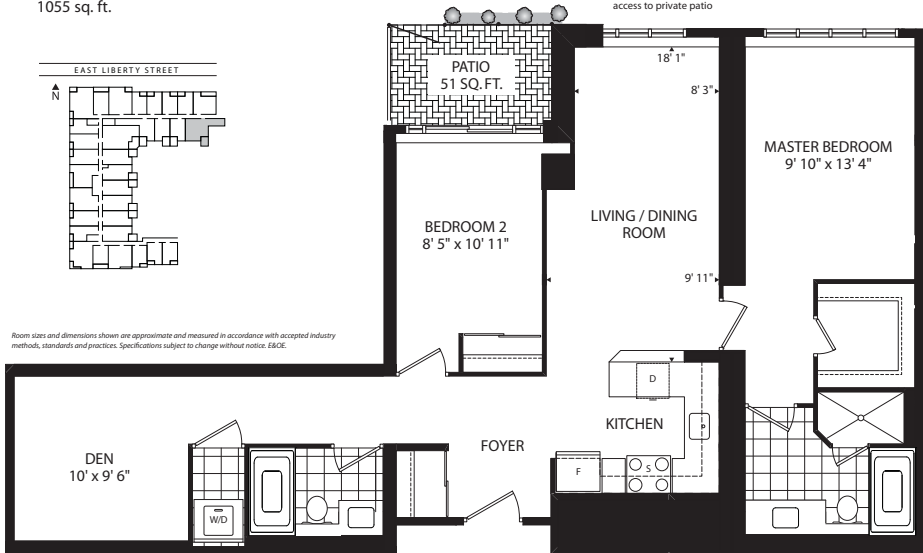
85 East Liberty St.

Suite 320p

2 Bedroom + Den
1055 sq. ft.



Room sizes and dimensions shown are approximate and measured in accordance with accepted industry methods, standards and practices. Specifications subject to change without notice. E&OE.



Spacious entrance foyer with generous, oversized closet space • Manhattan-style U shaped open concept kitchen with solid granite countertops and your choice of designer kitchen cabinetry • Gracious living/dining area with oversized den • Magnificent master bedroom with walk in closet and beautifully appointed full sized bath • Full sized second bedroom with deep full sized closet and direct access to private patio



King West
CONDOMINIUMS
in Liberty Village
Phase I

75 East Liberty St.

Suite 1917

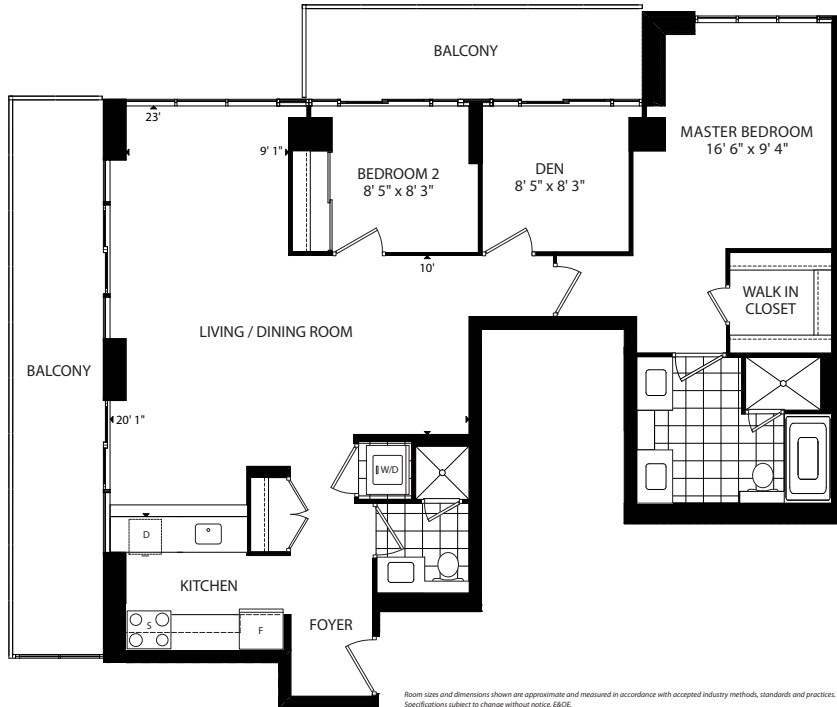
2 Bedroom + Den
1,096 sq. ft.

Your new Plazacorp suite in Liberty Village surrounds you with superior quality and lasting value.

Engineered hardwood or engineered laminate flooring • Quality kitchen cabinetry • 4 Full-sized Stainless Steel kitchen appliances: fridge, stove, dishwasher, OTR microwave/rangehood • Solid granite and marble counters • InFlame fireplace • Undermount stainless steel sink • Ceramic floor tile • Full-sized stacked front-loading clothes washer & dryer + **over 100 other standard features.**

EAST LIBERTY STREET

N

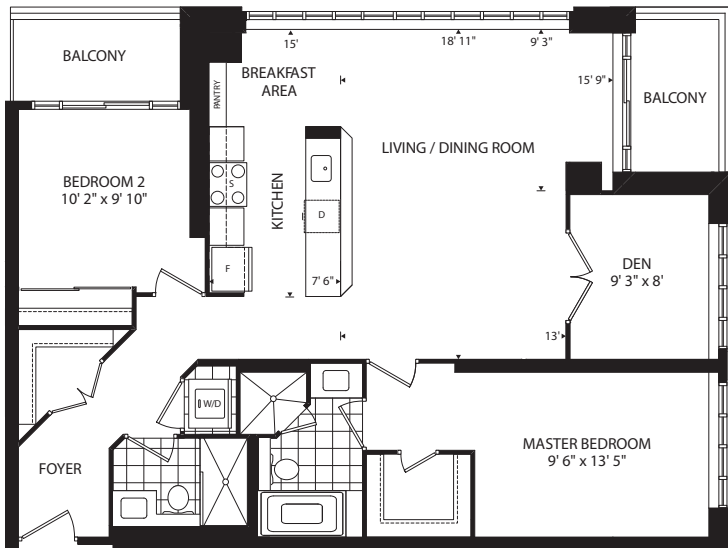


King West
CONDOMINIUMS
in Liberty Village
PHASE II

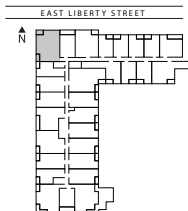
Suite 417 to 1017

2 Bedroom + Den

1151 sq. ft.



Spacious entrance foyer with generous walk in closet space • Manhattan-style open concept kitchen with solid granite countertops and your choice of designer kitchen cabinetry • Magnificent master bedroom with walk in closet and beautifully appointed full sized bath • Full sized second bedroom deep, full sized closet and direct access to private oversized balcony • Gracious living/dining area with spacious den and walk out to private balcony



Room sizes and dimensions shown are approximate and measured in accordance with accepted industry methods, standards and practices. Specifications subject to change without notice. E&OE.



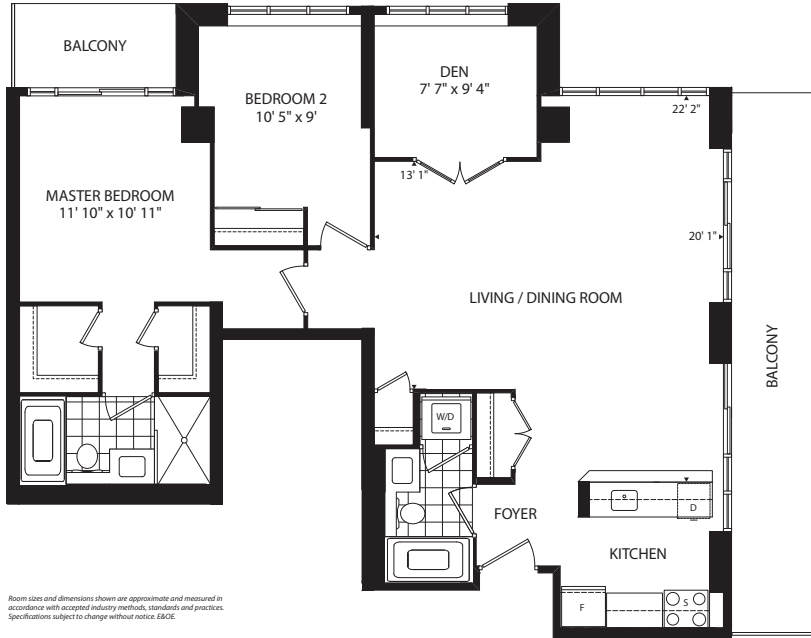
King West
CONDOMINIUMS
in Liberty Village

Phase I

85 East Liberty St.

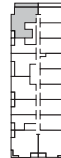
Suite 1717
2 Bedroom + Den
1206 sq. ft.

Spacious entrance foyer • Manhattan-style open concept kitchen with solid granite countertops and your choice of designer kitchen cabinetry • Magnificent master bedroom with walk in closets, beautifully appointed full sized bath and direct access to oversized balcony • Full sized second bedroom with deep, full sized closet • Gracious living/dining area with spacious den and walk out to oversized private balcony



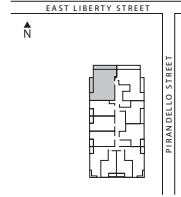
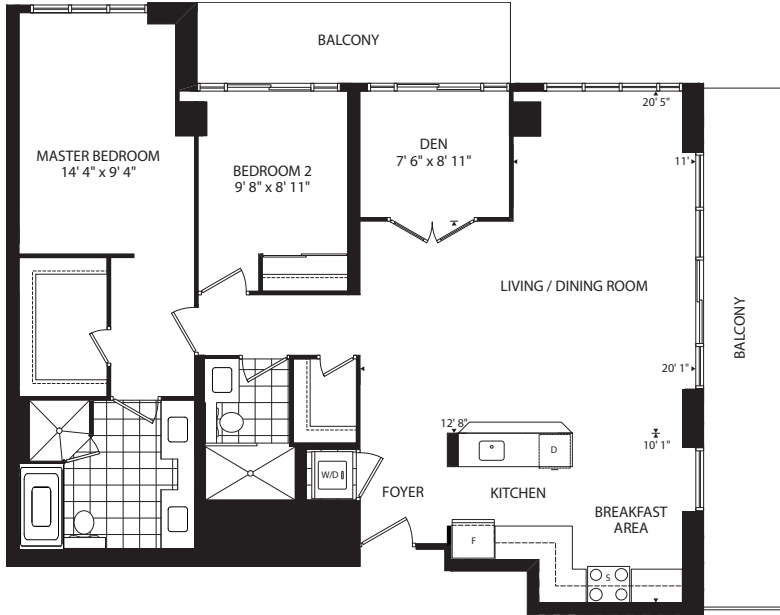
Room sizes and dimensions shown are approximate and measured in accordance with accepted industry methods, standards and practices. Specifications subject to change without notice. E&OE.

EAST LIBERTY STREET



King West
CONDOMINIUMS
in Liberty Village

Phase I



Suite 1911

2 Bedroom + Den
1,228 sq. ft.

Your new Plazacorp suite in Liberty Village surrounds you with superior quality and lasting value.

- Engineered hardwood or engineered laminate flooring •
- Quality kitchen cabinetry • 4 Full-sized Stainless Steel kitchen appliances: fridge, stove, dishwasher, OTR microwave/rangehood • Solid granite and marble counters • InFlame fireplace • Undermount stainless steel sink • Ceramic floor tile • Full-sized stacked front-loading clothes washer & dryer
- + over 100 other standard features.**

King West



Phase III

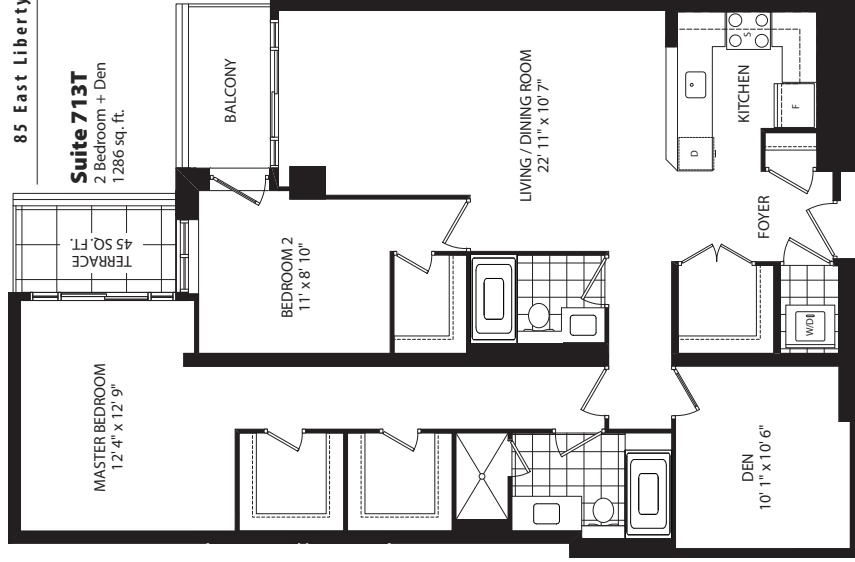
CONDOMINIUMS
in Liberty Village

Room sizes and dimensions shown are approximate and measured in accordance with accepted industry methods, standards and practices. Specifications subject to change without notice. E&OE.

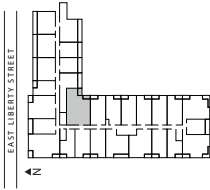
85 East Liberty St.

Suite 713T

2 Bedroom + Den
1286 sq. ft.



Spacious entrance foyer with generous, oversized closet space • Manhattan-style U shaped open concept kitchen with solid granite countertops and your choice of designer kitchen cabinetry • Gracious living/dining area with walk out to balcony • Magnificent master bedroom with walk in closets, beautifully appointed full sized bath and direct access to terrace • Full sized second bedroom with walk in closet and direct access to terrace



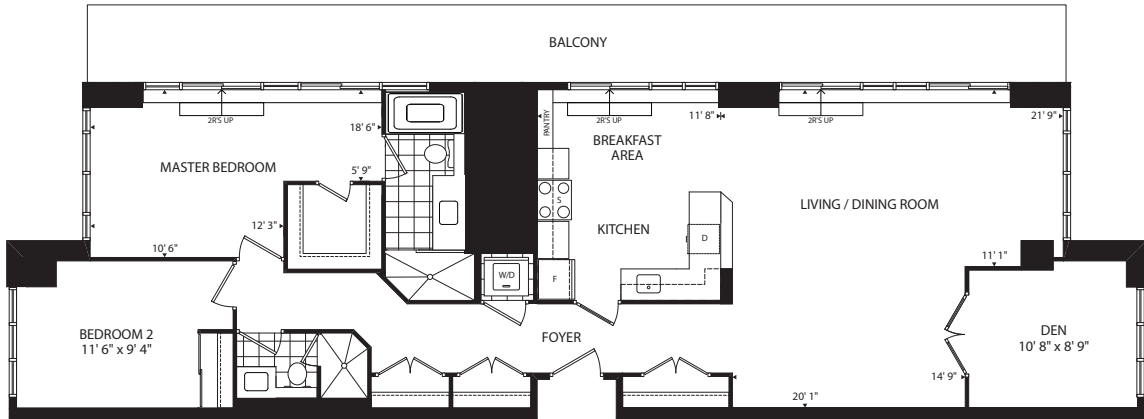
Room sizes and dimensions shown are approximate and measured in accordance with accepted industry methods, standards and practices. Specifications subject to change without notice. BICE.



King West
CONDOMINIUMS
in Liberty Village

Phase I

65 East Liberty St.



Suite 2016 to 2316

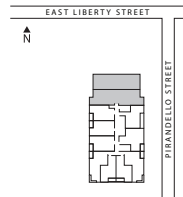
2 Bedroom + Den

1,376 sq. ft.

Your new Plazacorp suite in Liberty Village surrounds you with superior quality and lasting value.

Engineered hardwood or engineered laminate flooring • Quality kitchen cabinetry • 4 Full-sized Stainless Steel kitchen appliances: fridge, stove, dishwasher, OTR microwave/rangehood • Solid granite and marble counters • InFlame fireplace • Undermount stainless steel sink • Ceramic floor tile • Full-sized stacked front-loading clothes washer & dryer + **over 100 other standard features.**

Room sizes and dimensions shown are approximate and measured in accordance with accepted industry methods, standards and practices. Specifications subject to change without notice. E&OE.

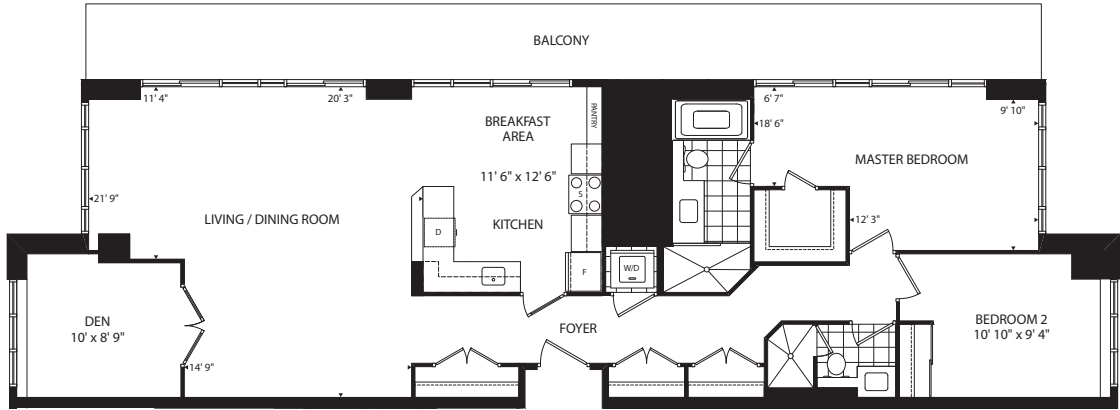


King West



Phase III

CONDOMINIUMS
in Liberty Village



85 East Liberty St.

Suite 2112 to 2312

2 Bedroom + Den
1376 sq. ft.

Spacious entrance foyer with oversized closet space • Manhattan-style open concept kitchen with solid granite countertops and your choice of designer kitchen cabinetry • Gracious living/dining area with den and walk out to oversized balcony • Magnificent master bedroom with walk in closet, beautifully appointed full sized bath and direct access to balcony • Full sized second bedroom with deep, full sized closet

Room sizes and dimensions shown are approximate and measured in accordance with accepted industry methods, standards and practices. Specifications subject to change without notice. E&OE.

EAST LIBERTY STREET



King West
CONDOMINIUMS
in Liberty Village

Phase I