

KING

HOME SOUTHERN



3BD.03

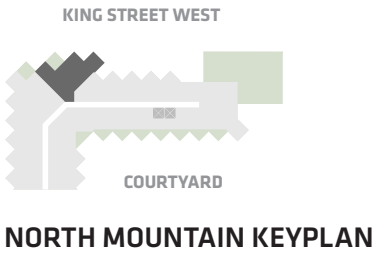
3 Bedroom
2 Bathroom

Total Living:
1405 ft²

Interior Living:
1262 ft²

Exterior Living:
143 ft²

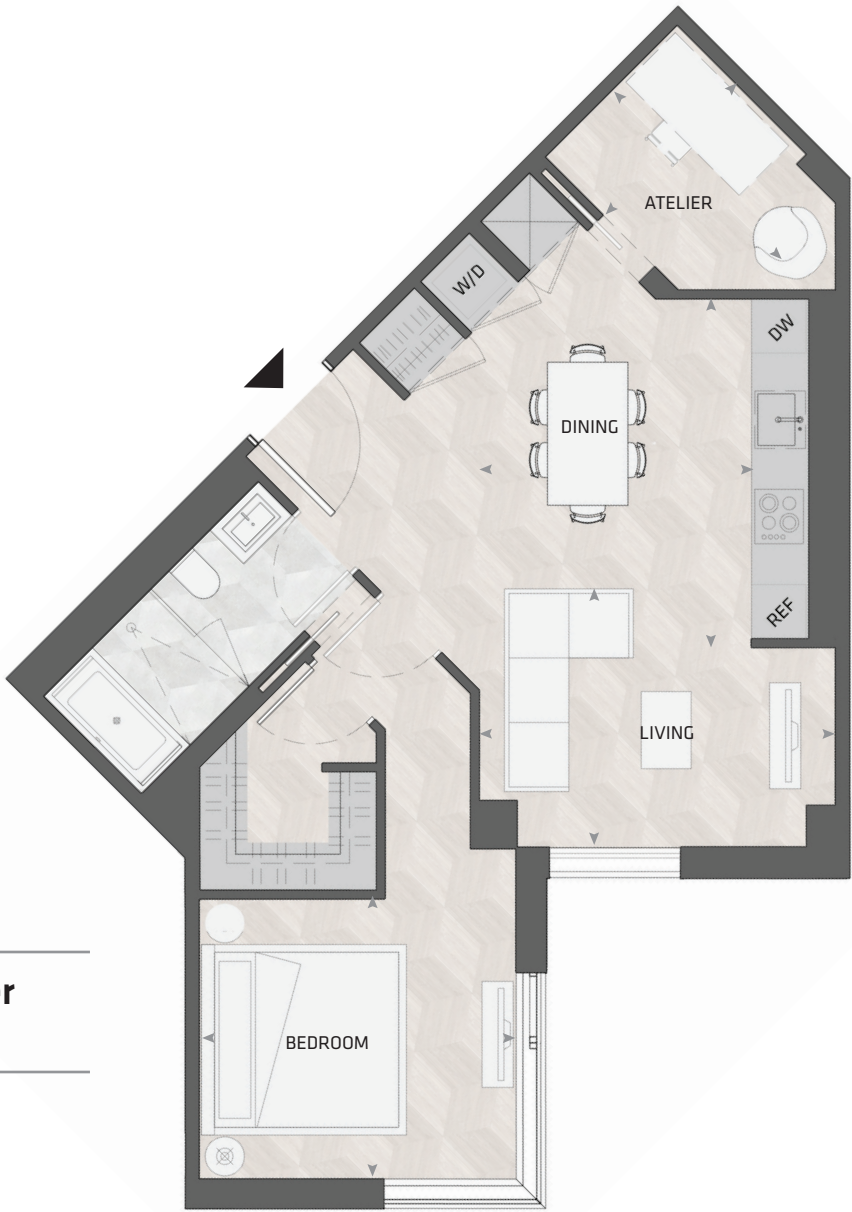
LIVING	8' 2" X 11' 9"
DINING	5' 9" X 9' 8"
BEDROOM	8' 6" X 8' 8"
TERRACE	6' 8" X 9' 1"



All dimensions and specifications are approximate. Certain plans are reverse or mirror image. Balcony square footages are estimated and may vary from that stated. Please see Sales Representative for details. Furniture not included. Refer to key plan for unit location and orientation. E. & O.E.

KING

HOME 506 N



1BD.74

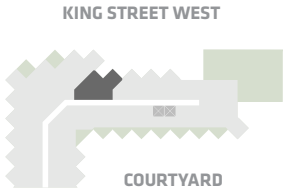
1 Bedroom + Atelier
1 Bathroom

Total Living:
762 ft²

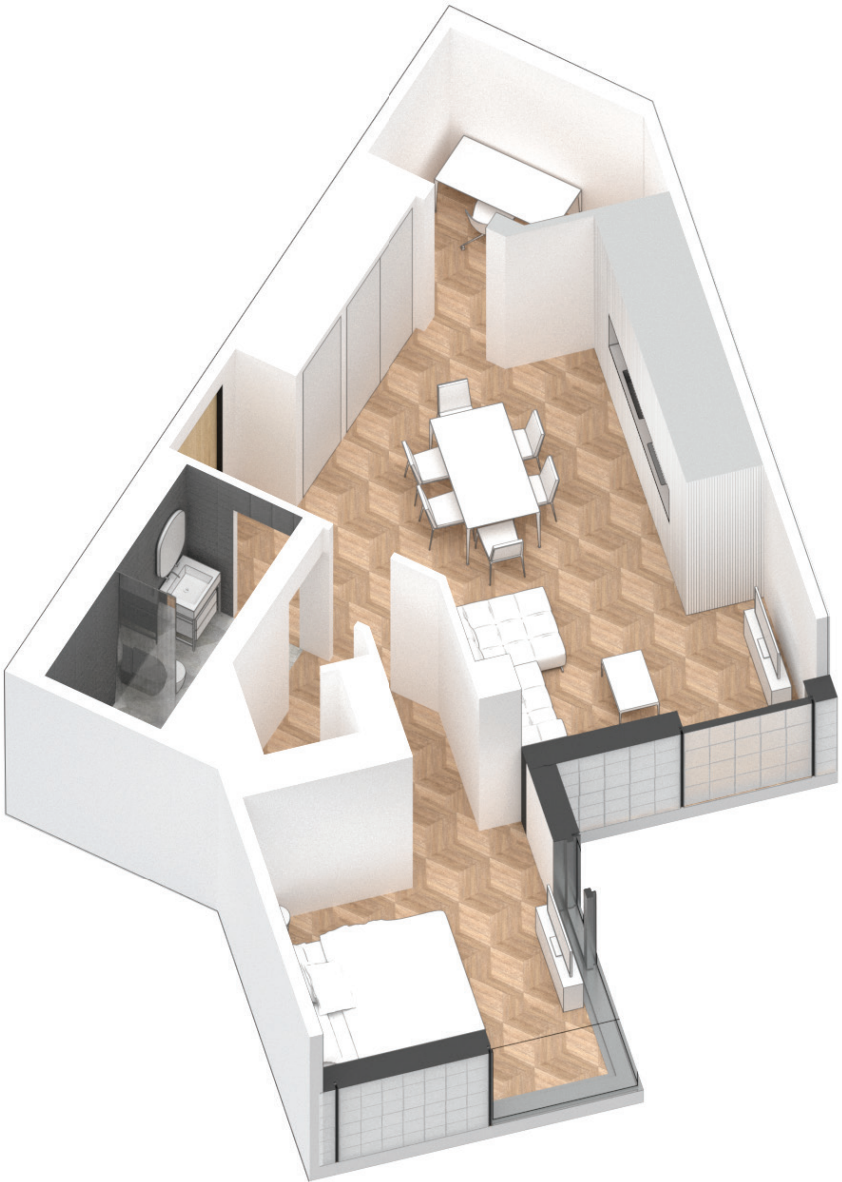
Interior Living:
762 ft²

Exterior Living:
N/A

LIVING	12' X 11" x 9' 4"
DINING	9' 10" x 12' 7"
BEDROOM	11' 5" x 10' 2"
ATELIER	6' 9" X 8' 2"



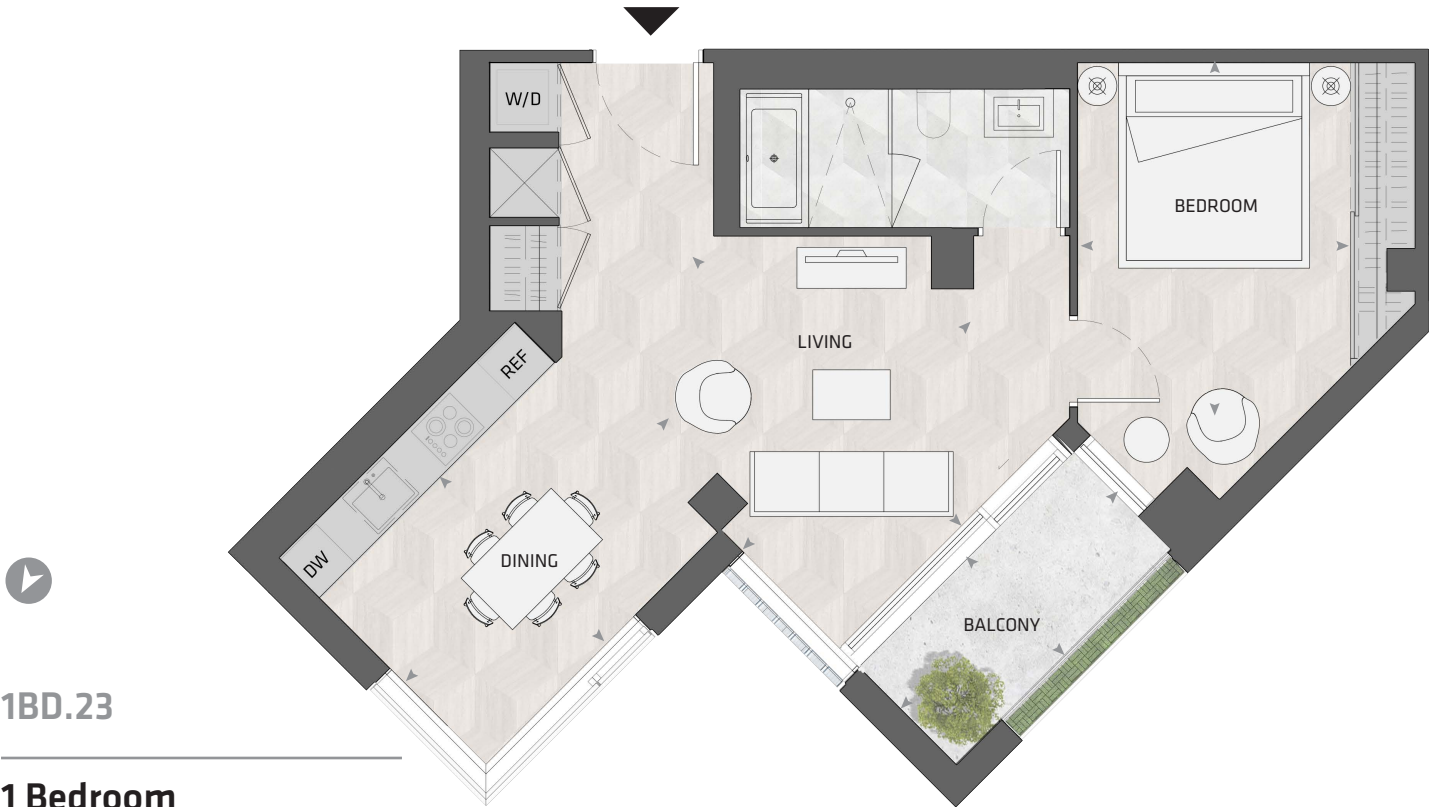
NORTH MOUNTAIN KEYPLAN



All dimensions and specifications are approximate. Certain plans are reverse or mirror image.
Balcony square footages are estimated and may vary from that stated. Please see Sales Representative
for details. Furniture not included. Refer to key plan for unit location and orientation. E. & O.E.

KING

HOME 507 N



1BD.23

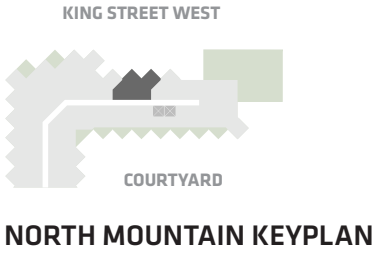
1 Bedroom
1 Bathroom

Total Living:
787 ft²

Interior Living:
715 ft²

Exterior Living:
72 ft²

LIVING	12' 0" X 10' 0"
DINING	8' 2" X 6' 5"
BEDROOM	9' 10" X 8' 8"
BALCONY	11' 0" X 4' 11"



All dimensions and specifications are approximate. Certain plans are reverse or mirror image. Balcony square footages are estimated and may vary from that stated. Please see Sales Representative for details. Furniture not included. Refer to key plan for unit location and orientation. E. & O.E.

KING

HOME 1002 N



2BD.23

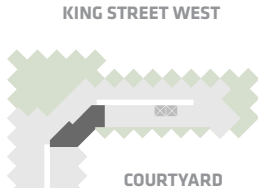
2 Bedroom
2 Bathroom

Total Living:
1013 ft²

Interior Living:
969 ft²

Exterior Living:
44 ft²

LIVING/ DINING	15' 10" x 15' 8"
MASTER BD	14' 8" x 13' 7"
BEDROOM 2	9' 11" x 8' 6"



NORTH MOUNTAIN KEYPLAN



All dimensions and specifications are approximate. Certain plans are reverse or mirror image. Balcony square footages are estimated and may vary from that stated. Please see Sales Representative for details. Furniture not included. Refer to key plan for unit location and orientation. E. & O.E.

KING

HOME 501 W



1BD.91

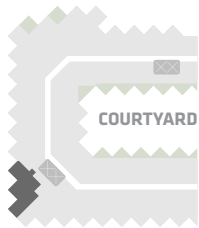
1 Bedroom
1 Bathroom

Total Living:
759 ft²

Interior Living:
687 ft²

Exterior Living:
72 ft²

LIVING/ DINING	9' 9" X 16' 8"
BEDROOM	10' 1" X 11' 0"
BALCONY	4' 11" X 11' 0"



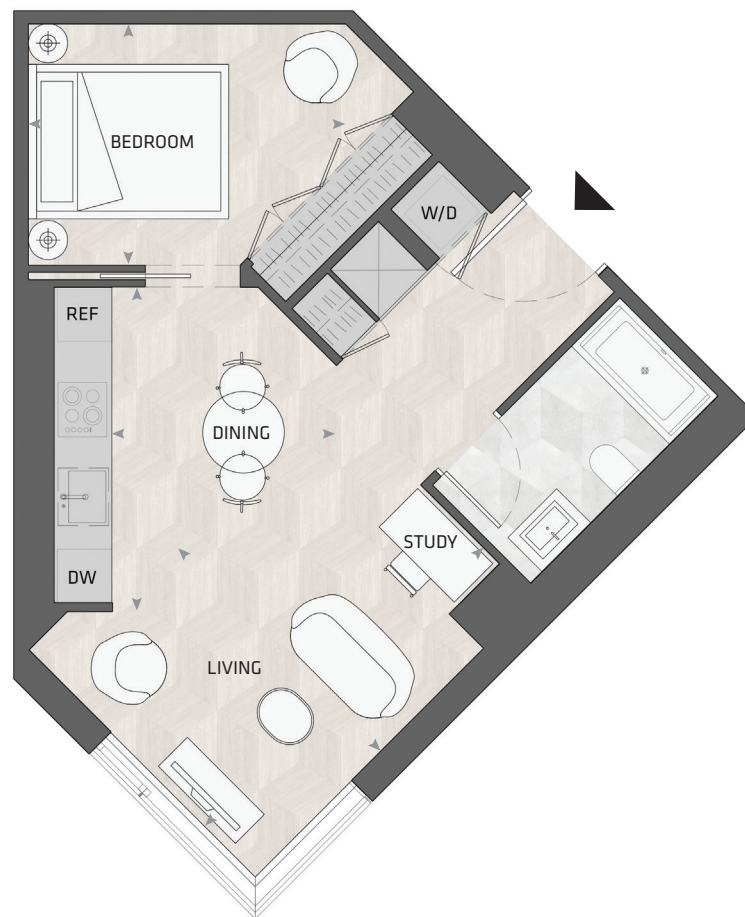
WEST MOUNTAIN KEYPLAN

Custom B&B Furniture Package included with the purchase of studio and one bedroom homes in the West Mountain

All dimensions and specifications are approximate. Certain plans are reverse or mirror image. Balcony square footages are estimated and may vary from that stated. Please see Sales Representative for details. Furniture not included. Refer to key plan for unit location and orientation. E. & O.E.

KING

HOME 502 W



1BD.78B

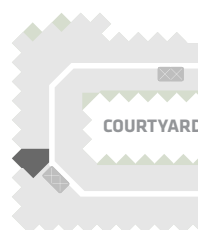
1 Bedroom + Study
1 Bathroom

Total Living:
560 ft²

Interior Living:
560 ft²

Exterior Living:
N/A

LIVING	11' 11" X 10' 5"
DINING	8' 1" X 11' 8"
BEDROOM	11' 6" X 8' 8"



WEST MOUNTAIN KEYPLAN

Custom B&B Furniture Package included with the purchase of studio and one bedroom homes in the West Mountain

All dimensions and specifications are approximate. Certain plans are reverse or mirror image. Balcony square footages are estimated and may vary from that stated. Please see Sales Representative for details. Furniture not included. Refer to key plan for unit location and orientation. E. & O.E.

KING

HOME 507 W



1BD.31

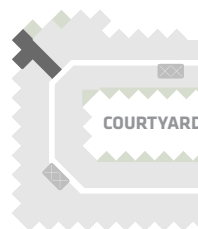
1 Bedroom + Atelier
1 Bathroom

Total Living:
782 ft²

Interior Living:
699 ft²

Exterior Living:
83 ft²

LIVING	10' 6" X 11' 7"
DINING	12' 3" X 8' 1"
BEDROOM	11' 5" X 9' 10"
ATELIER	6' 2" X 7' 7"
BALCONY	4' 11" X 11' 0"



WEST MOUNTAIN KEYPLAN

Custom B&B Furniture Package included with the purchase of studio and one bedroom homes in the West Mountain

All dimensions and specifications are approximate. Certain plans are reverse or mirror image. Balcony square footages are estimated and may vary from that stated. Please see Sales Representative for details. Furniture not included. Refer to key plan for unit location and orientation. E. & O.E.

KING

HOME 508 W



1BD.16

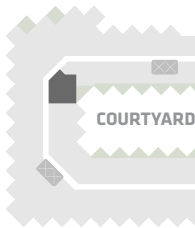
1 Bedroom + Atelier
1 Bathroom

Total Living:
673 ft²

Interior Living:
593 ft²

Exterior Living:
80 ft²

LIVING	12' 6" X 9' 10"
DINING	7' 6" X 12' 0"
BEDROOM	9' 10" X 9' 6"
ATELIER	7' 9" X 7' 6"
BALCONY	11' 5" X 7' 10"



WEST MOUNTAIN KEYPLAN

Custom B&B Furniture Package included with the purchase of studio and one bedroom homes in the West Mountain

All dimensions and specifications are approximate. Certain plans are reverse or mirror image. Balcony square footages are estimated and may vary from that stated. Please see Sales Representative for details. Furniture not included. Refer to key plan for unit location and orientation. E. & O.E.

KING

HOME 509 W



ST.02B

Studio
1 Bathroom

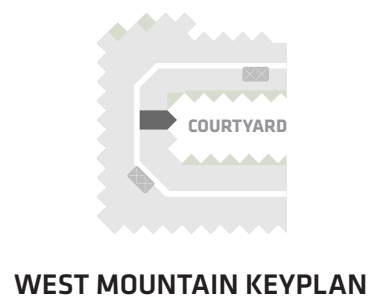
Total Living:
484 ft²

Interior Living:
484 ft²

Exterior Living:
N/A

**LIVING/
BEDROOM**
DINING

9' 1" X 8' 7"
6' 1" X 10' 8"



Custom B&B Furniture Package included with the purchase of studio and one bedroom homes in the West Mountain

All dimensions and specifications are approximate. Certain plans are reverse or mirror image. Balcony square footages are estimated and may vary from that stated. Please see Sales Representative for details. Furniture not included. Refer to key plan for unit location and orientation. E. & O.E.

KING

HOME 510 W



ST.02B

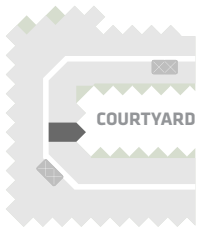
Studio
1 Bathroom

Total Living:
484 ft²

Interior Living:
484 ft²

Exterior Living:
N/A

LIVING/ BEDROOM	9' 1" X 8' 7"
DINING	10' 8" X 6' 1"



WEST MOUNTAIN KEYPLAN

Custom B&B Furniture Package included with the purchase of studio and one bedroom homes in the West Mountain

All dimensions and specifications are approximate. Certain plans are reverse or mirror image. Balcony square footages are estimated and may vary from that stated. Please see Sales Representative for details. Furniture not included. Refer to key plan for unit location and orientation. E. & O.E.

KING

HOME 512 W



1BD.06

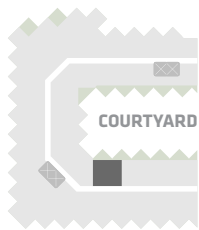
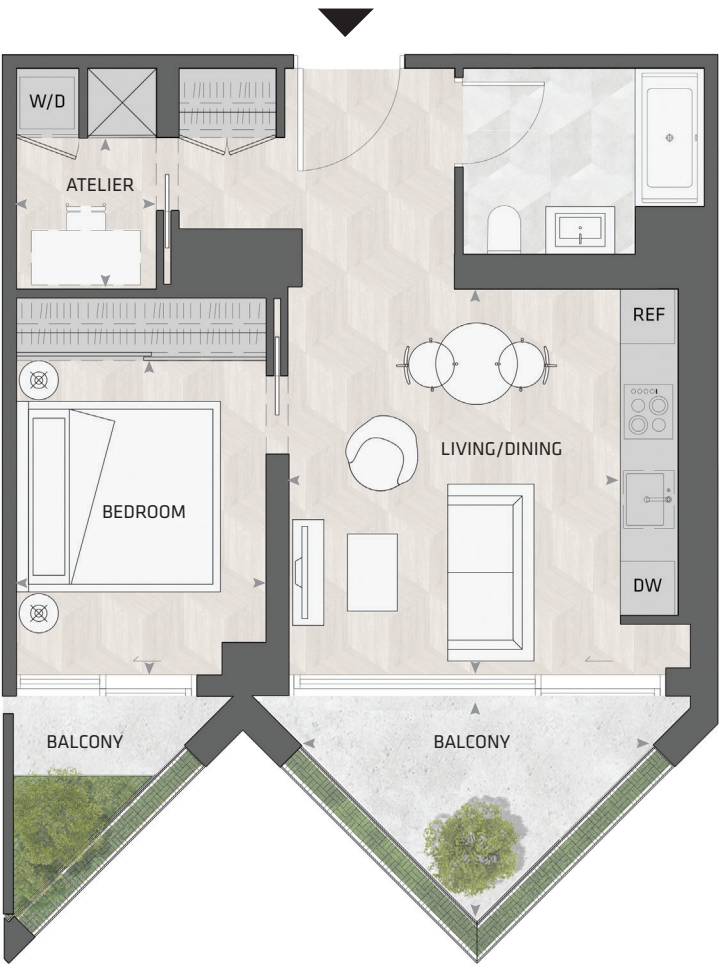
1 Bedroom + Atelier
1 Bathroom

Total Living:
728 ft²

Interior Living:
595 ft²

Exterior Living:
132 ft²

LIVING/ DINING	12' 0" X 13' 0"
BEDROOM	9' 6" X 11' 4"
ATELIER	5' 1" X 5' 6"
BALCONY	13' 0" X 7' 9"



WEST MOUNTAIN KEYPLAN

Custom B&B Furniture Package included with the purchase of studio and one bedroom homes in the West Mountain

All dimensions and specifications are approximate. Certain plans are reverse or mirror image. Balcony square footages are estimated and may vary from that stated. Please see Sales Representative for details. Furniture not included. Refer to key plan for unit location and orientation. E. & O.E.

KING

HOME 515 W



1BD.06

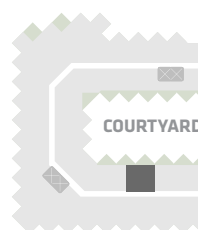
1 Bedroom + Atelier
1 Bathroom

Total Living:
726 ft²

Interior Living:
593 ft²

Exterior Living:
132 ft²

LIVING/ DINING	12' 0" X 13' 0"
BEDROOM	9' 6" X 11' 4"
ATELIER	5' 1" X 5' 6"
BALCONY	13' 0" X 7' 9"



WEST MOUNTAIN KEYPLAN

Custom B&B Furniture Package included with the purchase of studio and one bedroom homes in the West Mountain

All dimensions and specifications are approximate. Certain plans are reverse or mirror image. Balcony square footages are estimated and may vary from that stated. Please see Sales Representative for details. Furniture not included. Refer to key plan for unit location and orientation. E. & O.E.

KING

HOME 516 W



1BD.01A

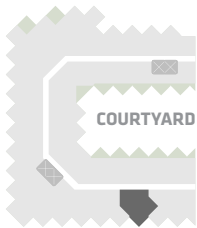
1 Bedroom + Atelier
1 Bathroom

Total Living:
725 ft²

Interior Living:
653 ft²

Exterior Living:
72 ft²

LIVING	11' 2" X 9' 7"
DINING	10' 5" X 8' 1"
BEDROOM	11' 7" X 9' 5"
ATELIER	6' 7" X 4' 2"
BALCONY	11' 0" X 4' 11"



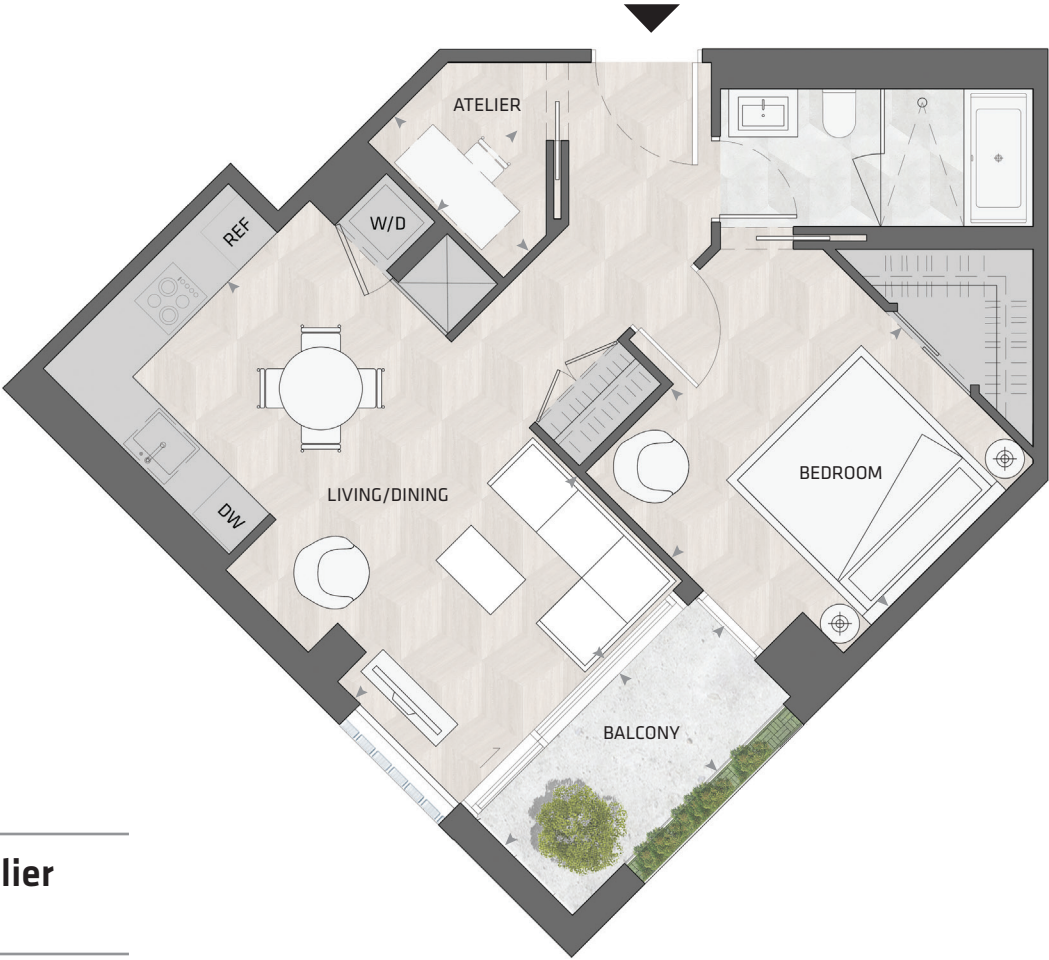
WEST MOUNTAIN KEYPLAN

Custom B&B Furniture Package included with the purchase of studio and one bedroom homes in the West Mountain

All dimensions and specifications are approximate. Certain plans are reverse or mirror image. Balcony square footages are estimated and may vary from that stated. Please see Sales Representative for details. Furniture not included. Refer to key plan for unit location and orientation. E. & O.E.

KING

HOME 518 W



1BD.59

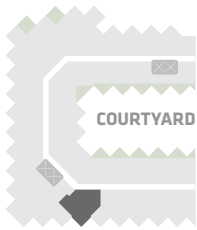
1 Bedroom + Atelier
1 Bathroom

Total Living:
764 ft²

Interior Living:
692 ft²

Exterior Living:
72 ft²

LIVING/ DINING	10' 8" X 19' 3"
BEDROOM	11' 9" X 11' 2"
ATELIER	4' 0" X 6' 11"
BALCONY	11' 0" X 4' 11"



WEST MOUNTAIN KEYPLAN

Custom B&B Furniture Package included with the purchase of studio and one bedroom homes in the West Mountain

All dimensions and specifications are approximate. Certain plans are reverse or mirror image. Balcony square footages are estimated and may vary from that stated. Please see Sales Representative for details. Furniture not included. Refer to key plan for unit location and orientation. E. & O.E.

KING

HOME 519 W



1BD.89

1 Bedroom + Atelier
1 Bathroom

Total Living:
771 ft²

Interior Living:
700 ft²

Exterior Living:
72 ft²

LIVING/ DINING	16' 8" X 9' 9"
BEDROOM	11' 0" X 10' 10"
ATELIER	6' 5" X 4' 4"
BALCONY	11' 0" X 4' 11"



Custom B&B Furniture Package included with the purchase of studio and one bedroom homes in the West Mountain

All dimensions and specifications are approximate. Certain plans are reverse or mirror image. Balcony square footages are estimated and may vary from that stated. Please see Sales Representative for details. Furniture not included. Refer to key plan for unit location and orientation. E. & O.E.

KING

HOME 602 W



1BD.78B

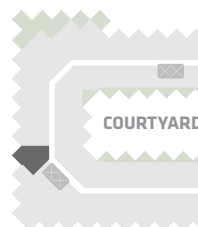
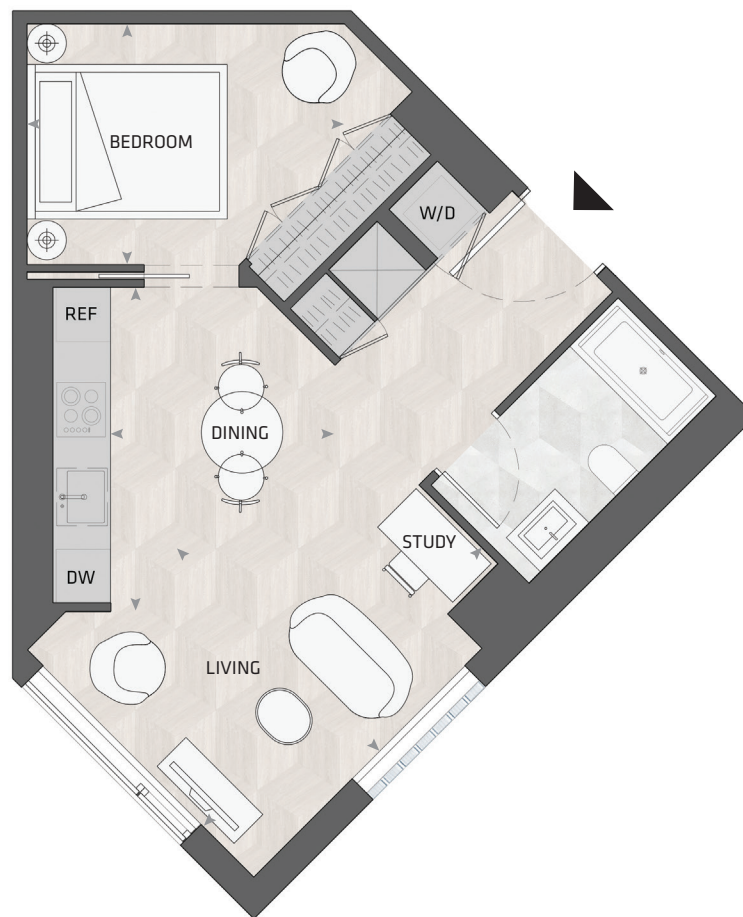
1 Bedroom + Study
1 Bathroom

Total Living:
560 ft²

Interior Living:
560 ft²

Exterior Living:
N/A

LIVING	11' 11" X 10' 5"
DINING	8' 1" X 11' 8"
BEDROOM	11' 6" X 8' 8"



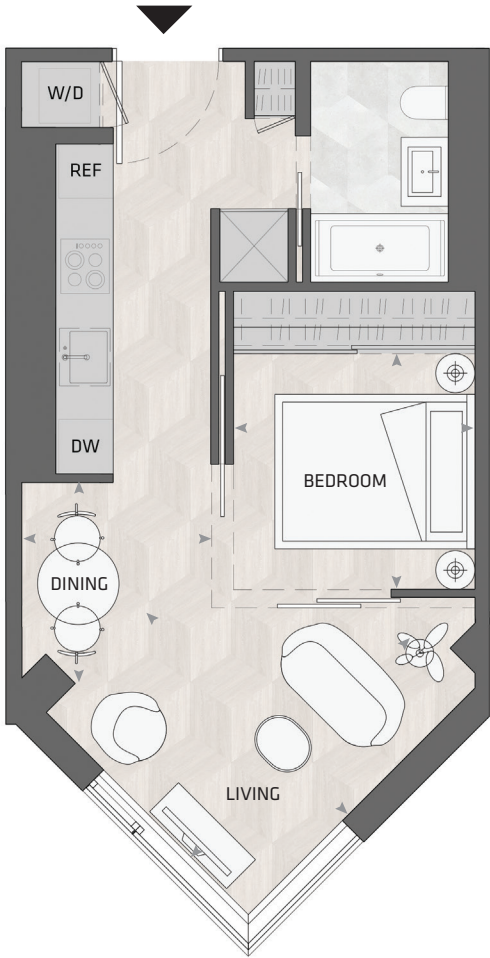
WEST MOUNTAIN KEYPLAN

Custom B&B Furniture Package included with the purchase of studio and one bedroom homes in the West Mountain

All dimensions and specifications are approximate. Certain plans are reverse or mirror image. Balcony square footages are estimated and may vary from that stated. Please see Sales Representative for details. Furniture not included. Refer to key plan for unit location and orientation. E. & O.E.

KING

HOME 603 W



1BD.77A

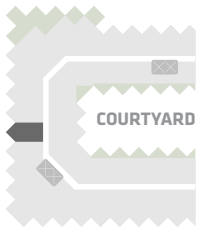
1 Bedroom
1 Bathroom

Total Living:
490 ft²

Interior Living:
490 ft²

Exterior Living:
N/A

LIVING	11' 11" X 10' 4"
DINING	6' 10" X 7' 3"
BEDROOM	8' 9" X 8' 6"



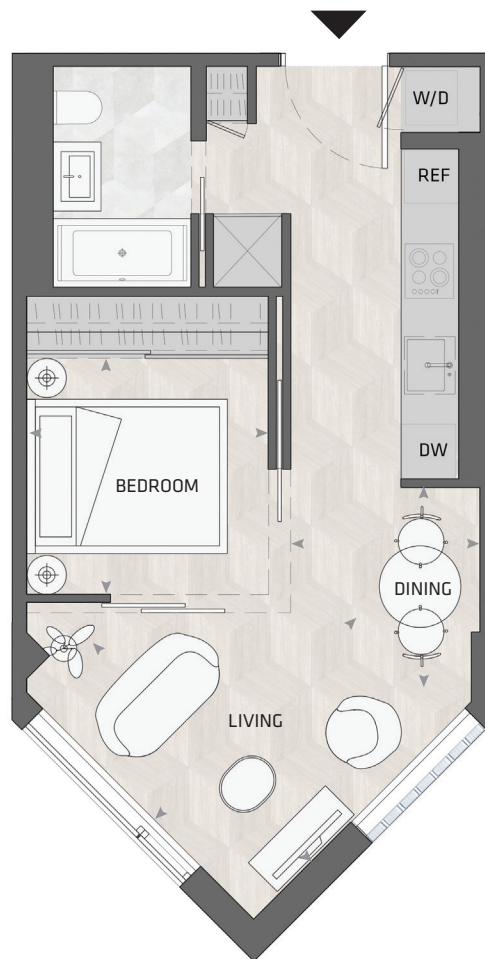
WEST MOUNTAIN KEYPLAN

Custom B&B Furniture Package included with the purchase of studio and one bedroom homes in the West Mountain

All dimensions and specifications are approximate. Certain plans are reverse or mirror image. Balcony square footages are estimated and may vary from that stated. Please see Sales Representative for details. Furniture not included. Refer to key plan for unit location and orientation. E. & O.E.

KING

HOME 605 W



1BD.77A

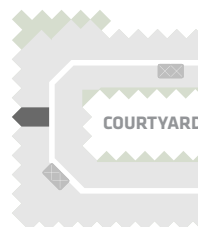
1 Bedroom
1 Bathroom

Total Living:
478 ft²

Interior Living:
478 ft²

Exterior Living:
N/A

LIVING	10' 4" X 11' 11"
DINING	6' 10" X 7' 3"
BEDROOM	8' 9" X 8' 6"



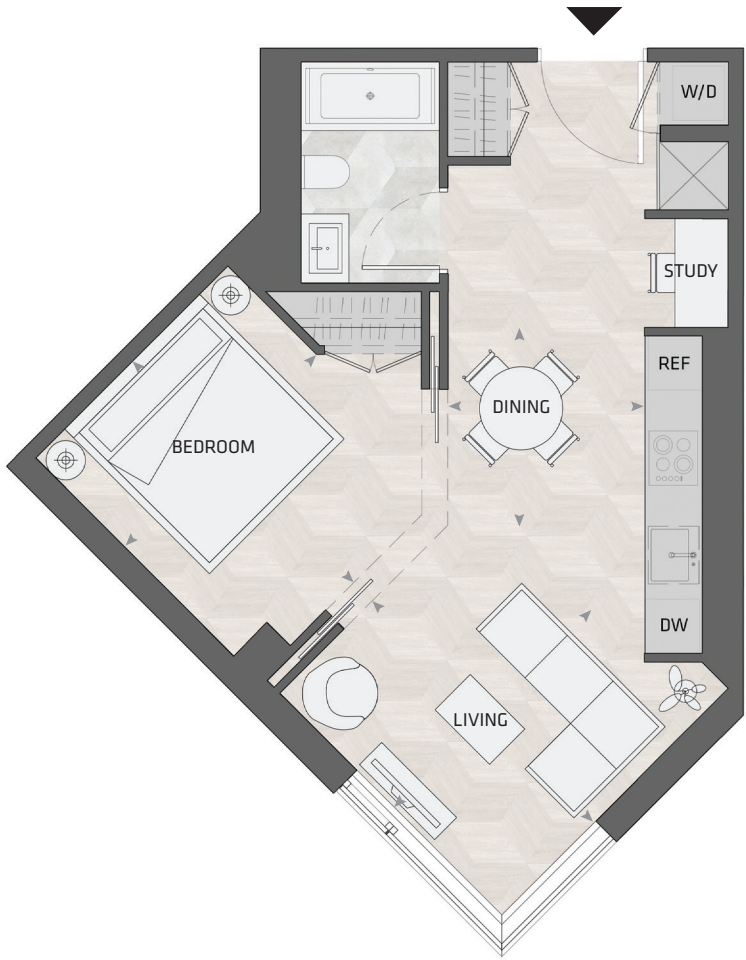
WEST MOUNTAIN KEYPLAN

Custom B&B Furniture Package included with the purchase of studio and one bedroom homes in the West Mountain

All dimensions and specifications are approximate. Certain plans are reverse or mirror image. Balcony square footages are estimated and may vary from that stated. Please see Sales Representative for details. Furniture not included. Refer to key plan for unit location and orientation. E. & O.E.

KING

HOME 606 W



1BD.96

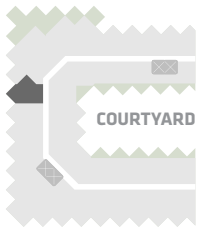
1 Bedroom + Study
1 Bathroom

Total Living:
561 ft²

Interior Living:
561 ft²

Exterior Living:
N/A

LIVING	11' 4" X 10' 1"
DINING	7' 2" X 7' 1"
BEDROOM	11' 4" X 9' 10"



WEST MOUNTAIN KEYPLAN

Custom B&B Furniture Package included with the purchase of studio and one bedroom homes in the West Mountain

All dimensions and specifications are approximate. Certain plans are reverse or mirror image. Balcony square footages are estimated and may vary from that stated. Please see Sales Representative for details. Furniture not included. Refer to key plan for unit location and orientation. E. & O.E.

KING

HOME 608 W



1BD.16

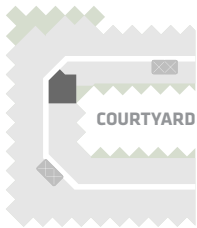
1 Bedroom + Atelier
1 Bathroom

Total Living:
671 ft²

Interior Living:
596 ft²

Exterior Living:
75 ft²

LIVING	12' 6" X 9' 10"
DINING	7' 6" X 12' 0"
BEDROOM	9' 10" X 9' 6"
ATELIER	7' 9" X 7' 6"
BALCONY	11' 5" X 7' 10"



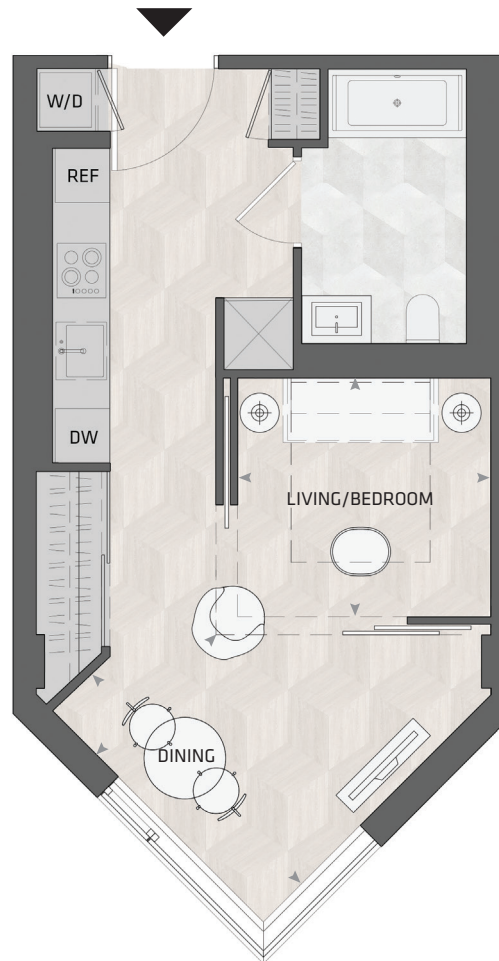
WEST MOUNTAIN KEYPLAN

Custom B&B Furniture Package included with the purchase of studio and one bedroom homes in the West Mountain

All dimensions and specifications are approximate. Certain plans are reverse or mirror image. Balcony square footages are estimated and may vary from that stated. Please see Sales Representative for details. Furniture not included. Refer to key plan for unit location and orientation. E. & O.E.

KING

HOME 609 W



ST.02B

Studio
1 Bathroom

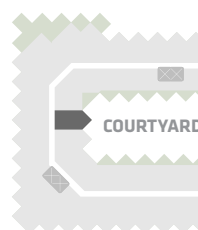
Total Living:
484 ft²

Interior Living:
484 ft²

Exterior Living:
N/A

**LIVING/
BEDROOM**
DINING

9' 1" X 8' 7"
6' 1" X 10' 8"



WEST MOUNTAIN KEYPLAN

Custom B&B Furniture Package included with the purchase of studio and one bedroom homes in the West Mountain

All dimensions and specifications are approximate. Certain plans are reverse or mirror image. Balcony square footages are estimated and may vary from that stated. Please see Sales Representative for details. Furniture not included. Refer to key plan for unit location and orientation. E. & O.E.

KING

HOME 610 W



ST.02B

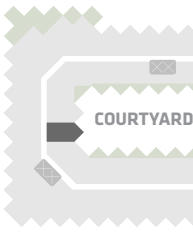
Studio
1 Bathroom

Total Living:
484 ft²

Interior Living:
484 ft²

Exterior Living:
N/A

LIVING/ BEDROOM	9' 1" X 8' 7"
DINING	10' 8" X 6' 1"



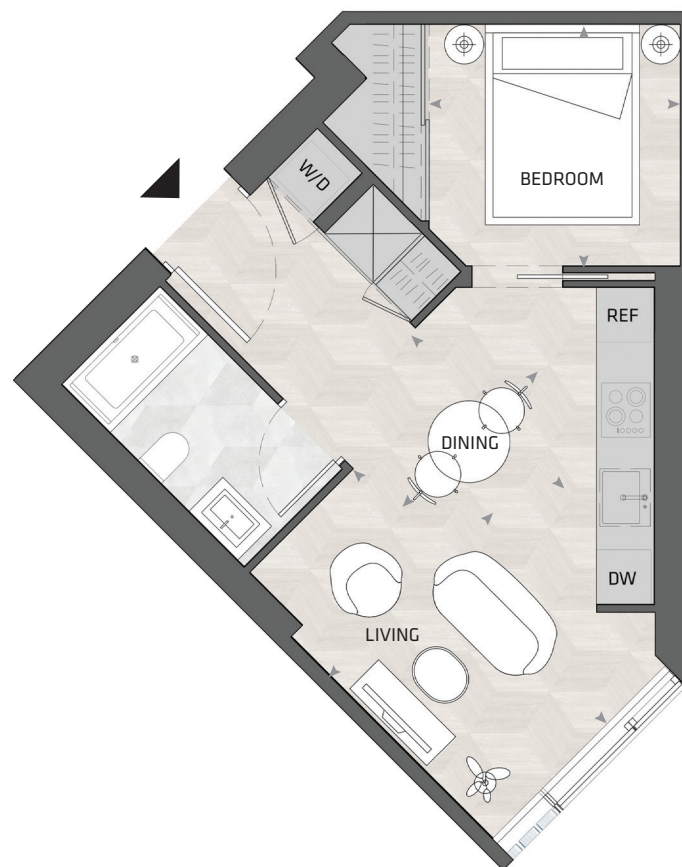
WEST MOUNTAIN KEYPLAN

Custom B&B Furniture Package included with the purchase of studio and one bedroom homes in the West Mountain

All dimensions and specifications are approximate. Certain plans are reverse or mirror image. Balcony square footages are estimated and may vary from that stated. Please see Sales Representative for details. Furniture not included. Refer to key plan for unit location and orientation. E. & O.E.

KING

HOME 611 W



1BD.78A

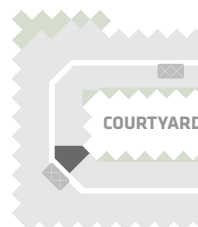
1 Bedroom
1 Bathroom

Total Living:
484 ft²

Interior Living:
484 ft²

Exterior Living:
N/A

LIVING	8' 5" X 13' 0"
DINING	7' 3" X 8' 7"
BEDROOM	9' 1" X 8' 8"



WEST MOUNTAIN KEYPLAN

Custom B&B Furniture Package included with the purchase of studio and one bedroom homes in the West Mountain

All dimensions and specifications are approximate. Certain plans are reverse or mirror image. Balcony square footages are estimated and may vary from that stated. Please see Sales Representative for details. Furniture not included. Refer to key plan for unit location and orientation. E. & O.E.

KING

HOME 612 W



1BD.78C

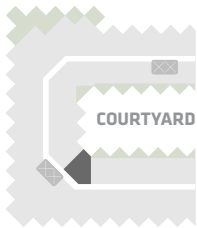
1 Bedroom
1 Bathroom

Total Living:
487 ft²

Interior Living:
487 ft²

Exterior Living:
N/A

LIVING	8' 5" X 14' 1"
DINING	7' 8" X 7' 11"
BEDROOM	8' 8" X 9' 1"



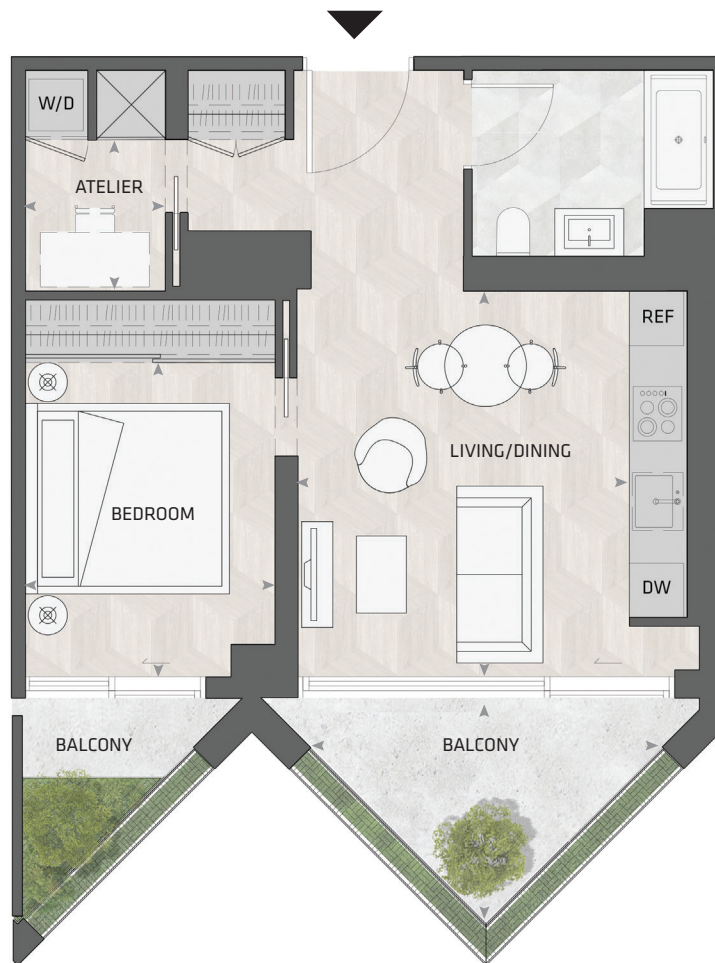
WEST MOUNTAIN KEYPLAN

Custom B&B Furniture Package included with the purchase of studio and one bedroom homes in the West Mountain

All dimensions and specifications are approximate. Certain plans are reverse or mirror image. Balcony square footages are estimated and may vary from that stated. Please see Sales Representative for details. Furniture not included. Refer to key plan for unit location and orientation. E. & O.E.

KING

HOME 615 W



1BD.06

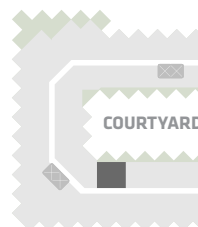
1 Bedroom + Atelier
1 Bathroom

Total Living:
726 ft²

Interior Living:
593 ft²

Exterior Living:
132 ft²

LIVING/ DINING	12' 0" X 13' 0"
BEDROOM	9' 6" X 11' 4"
ATELIER	5' 1" X 5' 6"
BALCONY	13' 0" X 7' 9"



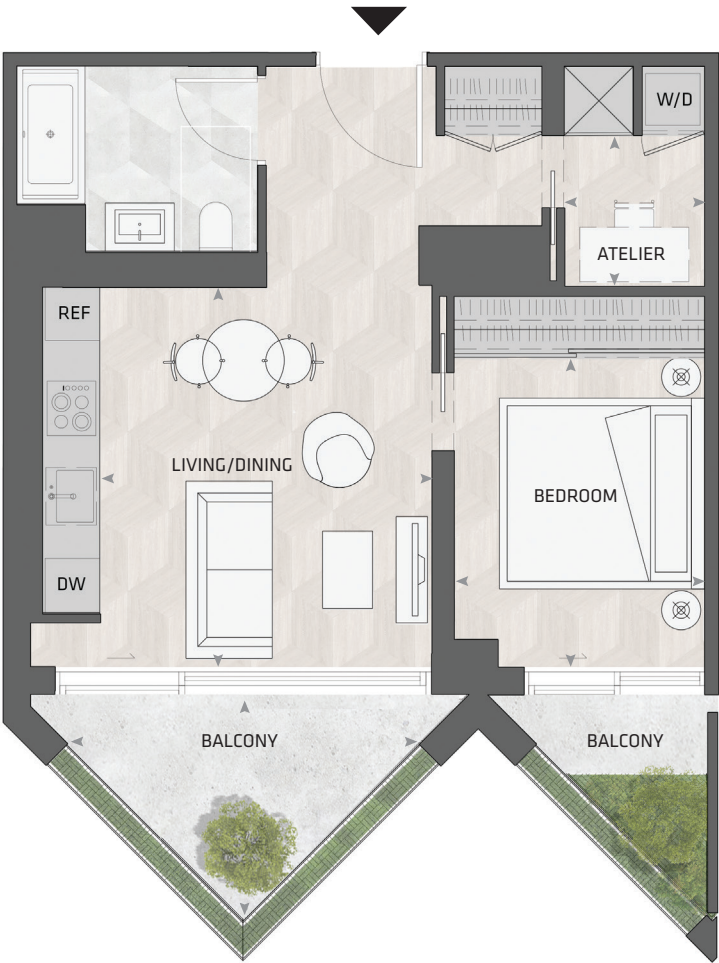
WEST MOUNTAIN KEYPLAN

Custom B&B Furniture Package included with the purchase of studio and one bedroom homes in the West Mountain

All dimensions and specifications are approximate. Certain plans are reverse or mirror image. Balcony square footages are estimated and may vary from that stated. Please see Sales Representative for details. Furniture not included. Refer to key plan for unit location and orientation. E. & O.E.

KING

HOME 616 W



1BD.06

1 Bedroom + Atelier
1 Bathroom

Total Living:
726 ft²

Interior Living:
593 ft²

Exterior Living:
132 ft²

LIVING/ DINING	12' 0" X 13' 0"
BEDROOM	9' 6" X 11' 4"
ATELIER	5' 1" X 5' 6"
BALCONY	13' 0" X 7' 9"



Custom B&B Furniture Package included with the purchase of studio and one bedroom homes in the West Mountain

All dimensions and specifications are approximate. Certain plans are reverse or mirror image. Balcony square footages are estimated and may vary from that stated. Please see Sales Representative for details. Furniture not included. Refer to key plan for unit location and orientation. E. & O.E.

KING

HOME 618 W



1BD.04A

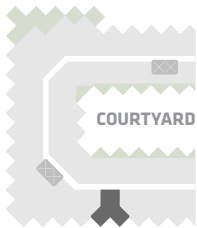
1 Bedroom + Study
1 Bathroom

Total Living:
637 ft²

Interior Living:
566 ft²

Exterior Living:
72 ft²

LIVING	11' 2" X 11' 4"
DINING	11' 9" X 6' 1"
BEDROOM	9' 10" X 11' 2"
BALCONY	11' 0" X 4' 11"



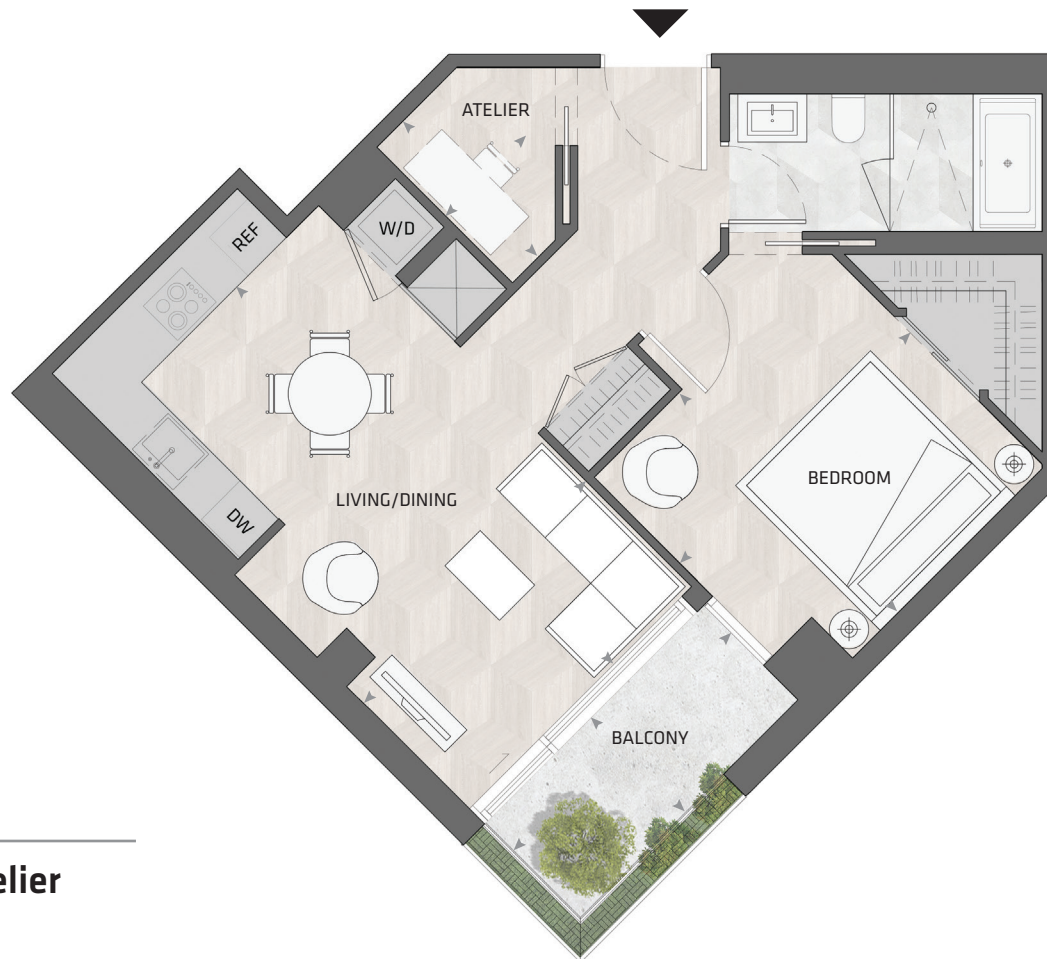
WEST MOUNTAIN KEYPLAN

Custom B&B Furniture Package included with the purchase of studio and one bedroom homes in the West Mountain

All dimensions and specifications are approximate. Certain plans are reverse or mirror image. Balcony square footages are estimated and may vary from that stated. Please see Sales Representative for details. Furniture not included. Refer to key plan for unit location and orientation. E. & O.E.

KING

HOME 619 W



1BD.59

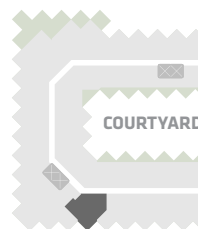
1 Bedroom + Atelier
1 Bathroom

Total Living:
766 ft²

Interior Living:
694 ft²

Exterior Living:
72 ft²

LIVING/ DINING	10' 8" X 19' 3"
BEDROOM	11' 9" X 11' 2"
ATELIER	4' 0" X 6' 11"
BALCONY	11' 0" X 4' 11"



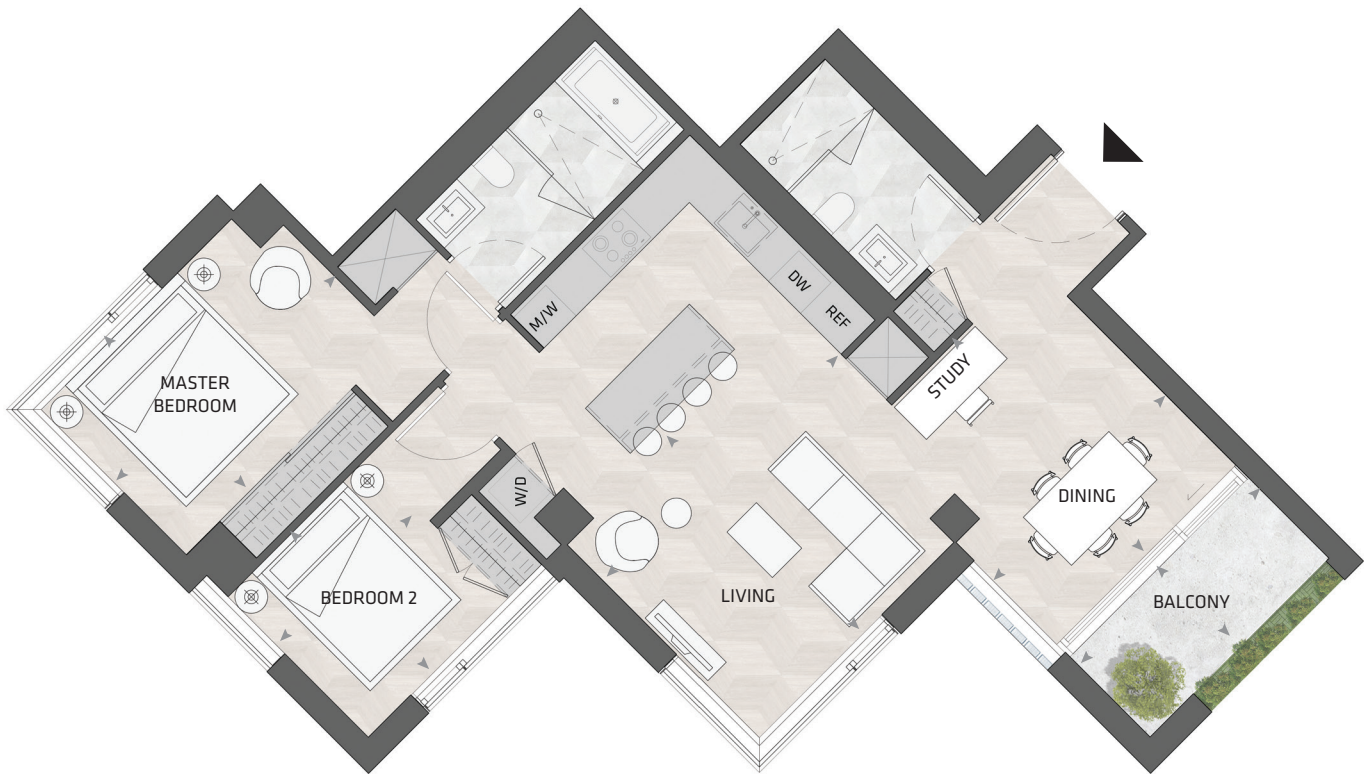
WEST MOUNTAIN KEYPLAN

Custom B&B Furniture Package included with the purchase of studio and one bedroom homes in the West Mountain

All dimensions and specifications are approximate. Certain plans are reverse or mirror image. Balcony square footages are estimated and may vary from that stated. Please see Sales Representative for details. Furniture not included. Refer to key plan for unit location and orientation. E. & O.E.

KING

HOME 620 W



2BD.85

2 Bedroom + Study
2 Bathroom

Total Living:
1,078 ft²

Interior Living:
1,006 ft²

Exterior Living:
72 ft²

LIVING	14' 3" X 11' 11"
DINING	11' 0" X 12' 5"
MASTER BD	13' 1" X 8' 10"
BEDROOM 2	8' 6" X 8' 7"
BALCONY	11' 0" X 4' 11"



All dimensions and specifications are approximate. Certain plans are reverse or mirror image. Balcony square footages are estimated and may vary from that stated. Please see Sales Representative for details. Furniture not included. Refer to key plan for unit location and orientation. E. & O.E.

KING

HOME 706 W



1BD.96

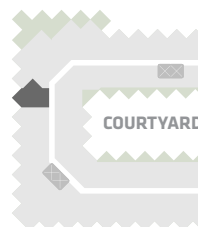
1 Bedroom + Study
1 Bathroom

Total Living:
561 ft²

Interior Living:
561 ft²

Exterior Living:
N/A

LIVING	11' 4" X 10' 1"
DINING	7' 2" X 7' 1"
BEDROOM	11' 4" X 9' 10"



WEST MOUNTAIN KEYPLAN

Custom B&B Furniture Package included with the purchase of studio and one bedroom homes in the West Mountain

All dimensions and specifications are approximate. Certain plans are reverse or mirror image. Balcony square footages are estimated and may vary from that stated. Please see Sales Representative for details. Furniture not included. Refer to key plan for unit location and orientation. E. & O.E.

KING

HOME 710 W



ST.02B

Studio
1 Bathroom

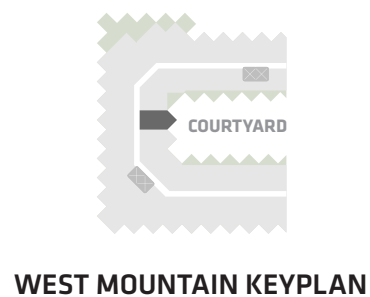
Total Living:
484 ft²

Interior Living:
484 ft²

Exterior Living:
N/A

**LIVING/
BEDROOM**
DINING

9' 1" X 8' 7"
6' 1" X 10' 8"



Custom B&B Furniture Package included with the purchase of studio and one bedroom homes in the West Mountain

All dimensions and specifications are approximate. Certain plans are reverse or mirror image. Balcony square footages are estimated and may vary from that stated. Please see Sales Representative for details. Furniture not included. Refer to key plan for unit location and orientation. E. & O.E.

KING

HOME 718 W



1BD.01A

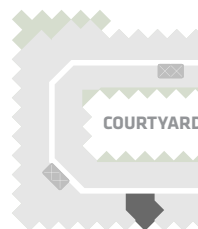
1 Bedroom + Atelier
1 Bathroom

Total Living:
725 ft²

Interior Living:
653 ft²

Exterior Living:
72 ft²

LIVING	11' 2" X 9' 7"
DINING	10' 5" X 8' 1"
BEDROOM	11' 7" X 9' 5"
ATELIER	6' 7" X 4' 2"
BALCONY	11' 0" X 4' 11"



WEST MOUNTAIN KEYPLAN

Custom B&B Furniture Package included with the purchase of studio and one bedroom homes in the West Mountain

All dimensions and specifications are approximate. Certain plans are reverse or mirror image. Balcony square footages are estimated and may vary from that stated. Please see Sales Representative for details. Furniture not included. Refer to key plan for unit location and orientation. E. & O.E.

KING

HOME 719 W



1BD.04A

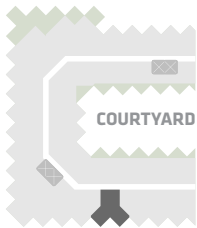
1 Bedroom + Study
1 Bathroom

Total Living:
638 ft²

Interior Living:
566 ft²

Exterior Living:
72 ft²

LIVING	11' 2" X 11' 4"
DINING	11' 9" X 6' 1"
BEDROOM	9' 10" X 11' 2"
BALCONY	11' 0" X 4' 11"



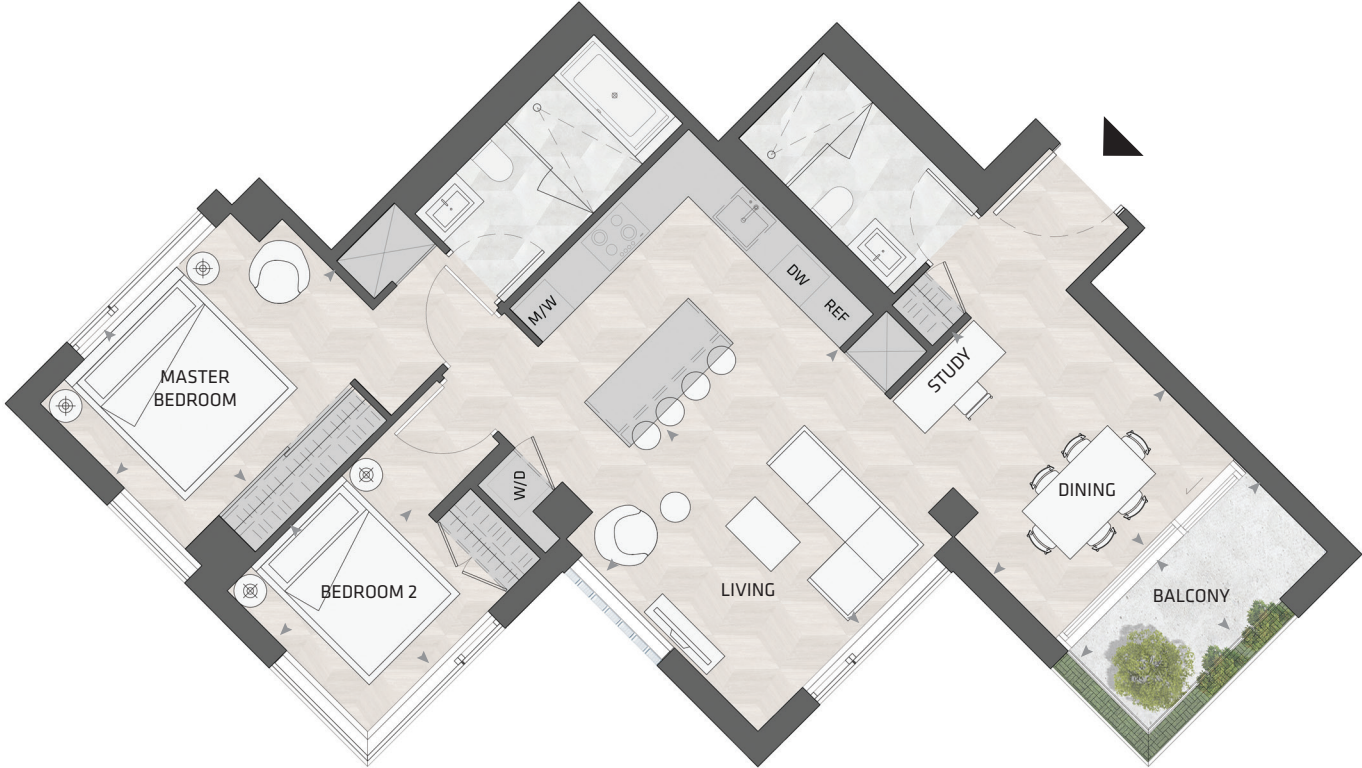
WEST MOUNTAIN KEYPLAN

Custom B&B Furniture Package included with the purchase of studio and one bedroom homes in the West Mountain

All dimensions and specifications are approximate. Certain plans are reverse or mirror image. Balcony square footages are estimated and may vary from that stated. Please see Sales Representative for details. Furniture not included. Refer to key plan for unit location and orientation. E. & O.E.

KING

HOME 721 W



2BD.85

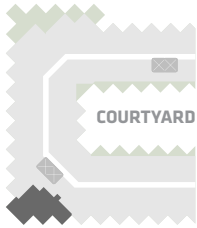
2 Bedroom + Study
2 Bathroom

Total Living:
1,096 ft²

Interior Living:
1,024 ft²

Exterior Living:
72 ft²

LIVING	14' 3" X 11' 11"
DINING	11' 0" X 12' 5"
MASTER BD	13' 1" X 8' 10"
BEDROOM 2	8' 6" X 8' 7"
BALCONY	11' 0" X 4' 11"

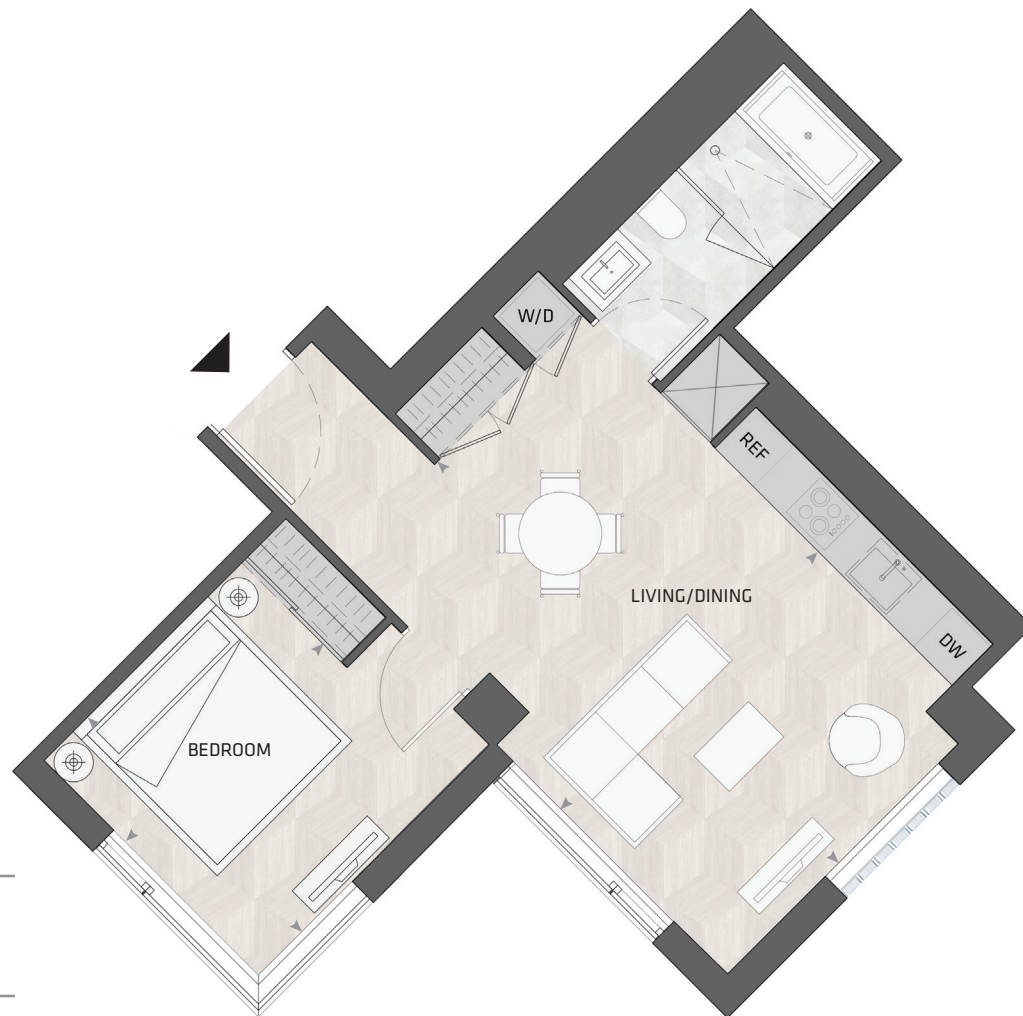


WEST MOUNTAIN KEYPLAN

All dimensions and specifications are approximate. Certain plans are reverse or mirror image. Balcony square footages are estimated and may vary from that stated. Please see Sales Representative for details. Furniture not included. Refer to key plan for unit location and orientation. E. & O.E.

KING

HOME 801 W



1BD.94

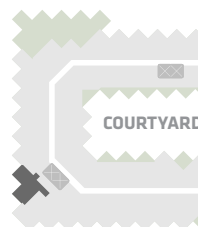
1 Bedroom
1 Bathroom

Total Living:
661 ft²

Interior Living:
661 ft²

Exterior Living:
N/A

LIVING/ DINING	13' 1" X 20' 6"
BEDROOM	10' 1" X 11' 0"



WEST MOUNTAIN KEYPLAN

Custom B&B Furniture Package included with the purchase of studio and one bedroom homes in the West Mountain

All dimensions and specifications are approximate. Certain plans are reverse or mirror image. Balcony square footages are estimated and may vary from that stated. Please see Sales Representative for details. Furniture not included. Refer to key plan for unit location and orientation. E. & O.E.

KING

HOME 805 W



1BD.77A

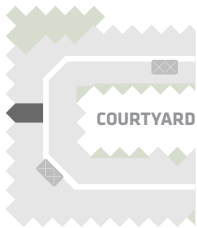
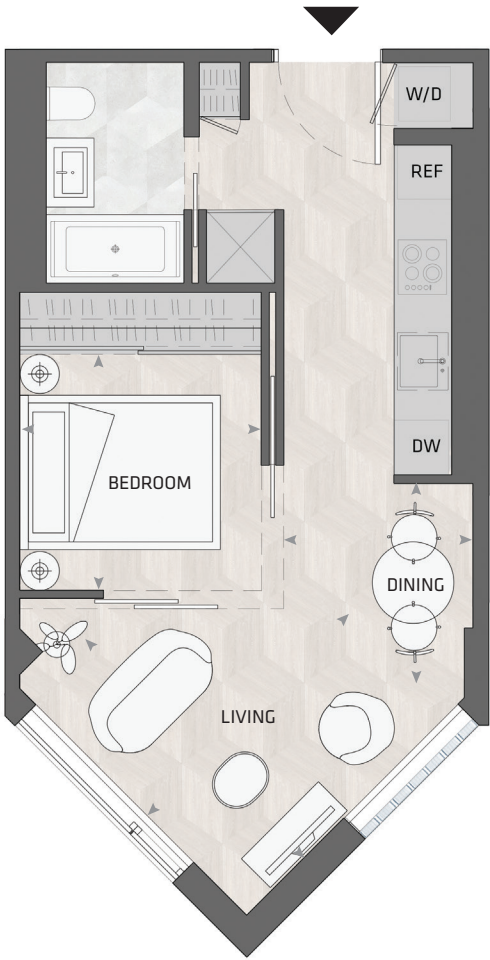
1 Bedroom
1 Bathroom

Total Living:
484 ft²

Interior Living:
484 ft²

Exterior Living:
N/A

LIVING	10' 4" X 11' 11"
DINING	6' 10" X 7' 3"
BEDROOM	8' 9" X 8' 6"



WEST MOUNTAIN KEYPLAN

Custom B&B Furniture Package included with the purchase of studio and one bedroom homes in the West Mountain

All dimensions and specifications are approximate. Certain plans are reverse or mirror image. Balcony square footages are estimated and may vary from that stated. Please see Sales Representative for details. Furniture not included. Refer to key plan for unit location and orientation. E. & O.E.

KING

HOME 806 W



1BD.96

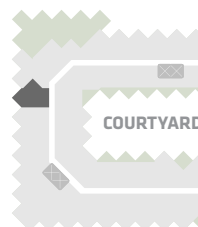
1 Bedroom + Study
1 Bathroom

Total Living:
555 ft²

Interior Living:
555 ft²

Exterior Living:
N/A

LIVING	11' 4" X 10' 1"
DINING	7' 2" X 7' 1"
BEDROOM	11' 4" X 9' 10"



WEST MOUNTAIN KEYPLAN

Custom B&B Furniture Package included with the purchase of studio and one bedroom homes in the West Mountain

All dimensions and specifications are approximate. Certain plans are reverse or mirror image. Balcony square footages are estimated and may vary from that stated. Please see Sales Representative for details. Furniture not included. Refer to key plan for unit location and orientation. E. & O.E.

KING

HOME 810 W



ST.02B

Studio
1 Bathroom

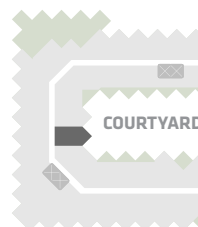
Total Living:
484 ft²

Interior Living:
484 ft²

Exterior Living:
N/A

**LIVING/
BEDROOM**
DINING

9' 1" X 8' 7"
10' 8" X 6' 1"



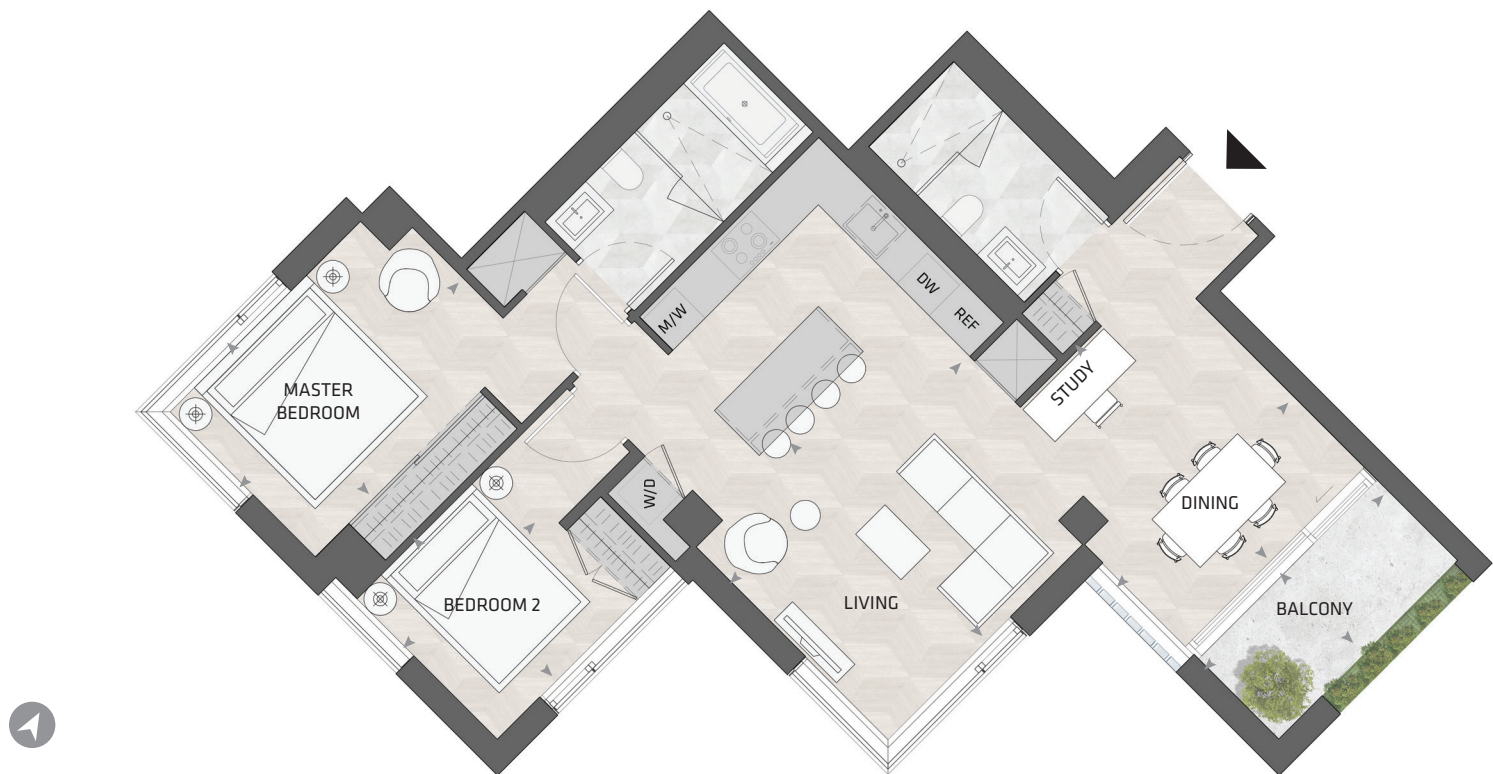
WEST MOUNTAIN KEYPLAN

Custom B&B Furniture Package included with the purchase of studio and one bedroom homes in the West Mountain

All dimensions and specifications are approximate. Certain plans are reverse or mirror image. Balcony square footages are estimated and may vary from that stated. Please see Sales Representative for details. Furniture not included. Refer to key plan for unit location and orientation. E. & O.E.

KING

HOME 820 W



2BD.85

2 Bedroom + Study
2 Bathroom

Total Living:
1,090 ft²

Interior Living:
1,018 ft²

Exterior Living:
72 ft²

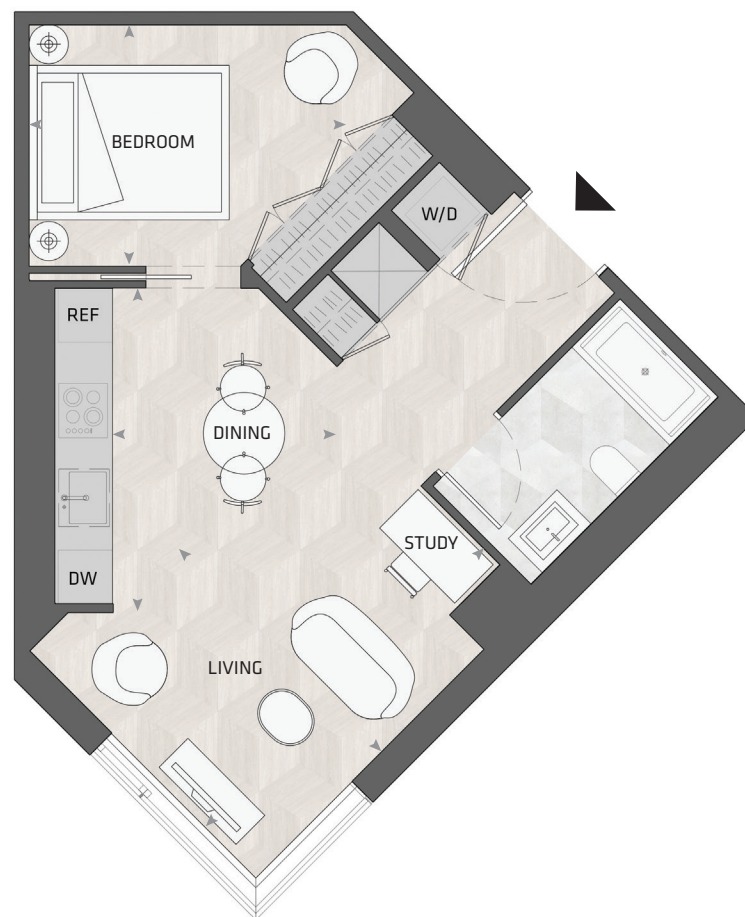
LIVING	14' 3" X 11' 11"
DINING	11' 0" X 12' 5"
MASTER BD	13' 1" X 8' 10"
BEDROOM 2	8' 6" X 8' 7"
BALCONY	11' 0" X 4' 11"



All dimensions and specifications are approximate. Certain plans are reverse or mirror image. Balcony square footages are estimated and may vary from that stated. Please see Sales Representative for details. Furniture not included. Refer to key plan for unit location and orientation. E. & O.E.

KING

HOME 902 W



1BD.78B

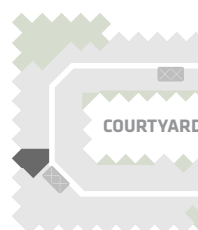
1 Bedroom + Study
1 Bathroom

Total Living:
560 ft²

Interior Living:
560 ft²

Exterior Living:
N/A

LIVING	11' 11" X 10' 5"
DINING	8' 1" X 11' 8"
BEDROOM	11' 6" X 8' 8"



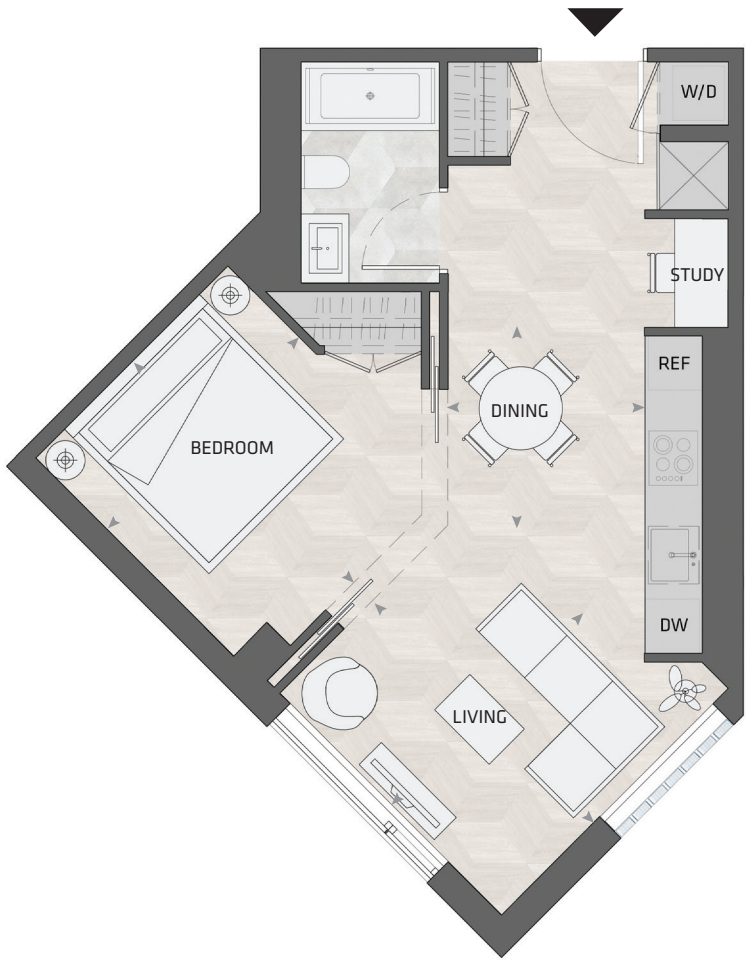
WEST MOUNTAIN KEYPLAN

Custom B&B Furniture Package included with the purchase of studio and one bedroom homes in the West Mountain

All dimensions and specifications are approximate. Certain plans are reverse or mirror image. Balcony square footages are estimated and may vary from that stated. Please see Sales Representative for details. Furniture not included. Refer to key plan for unit location and orientation. E. & O.E.

KING

HOME 906 W



1BD.96

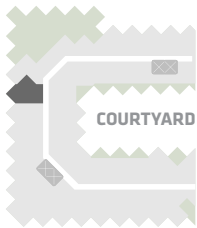
1 Bedroom + Study
1 Bathroom

Total Living:
561 ft²

Interior Living:
561 ft²

Exterior Living:
N/A

LIVING	11' 4" X 10' 1"
DINING	7' 2" X 7' 1"
BEDROOM	11' 4" X 9' 10"



WEST MOUNTAIN KEYPLAN

Custom B&B Furniture Package included with the purchase of studio and one bedroom homes in the West Mountain

All dimensions and specifications are approximate. Certain plans are reverse or mirror image. Balcony square footages are estimated and may vary from that stated. Please see Sales Representative for details. Furniture not included. Refer to key plan for unit location and orientation. E. & O.E.

KING

HOME 910 W



ST.02B

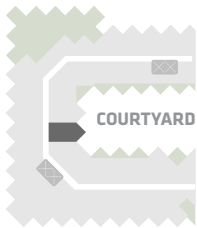
Studio
1 Bathroom

Total Living:
484 ft²

Interior Living:
484 ft²

Exterior Living:
N/A

LIVING/ BEDROOM	9' 1" X 8' 7"
DINING	10' 8" X 6' 1"



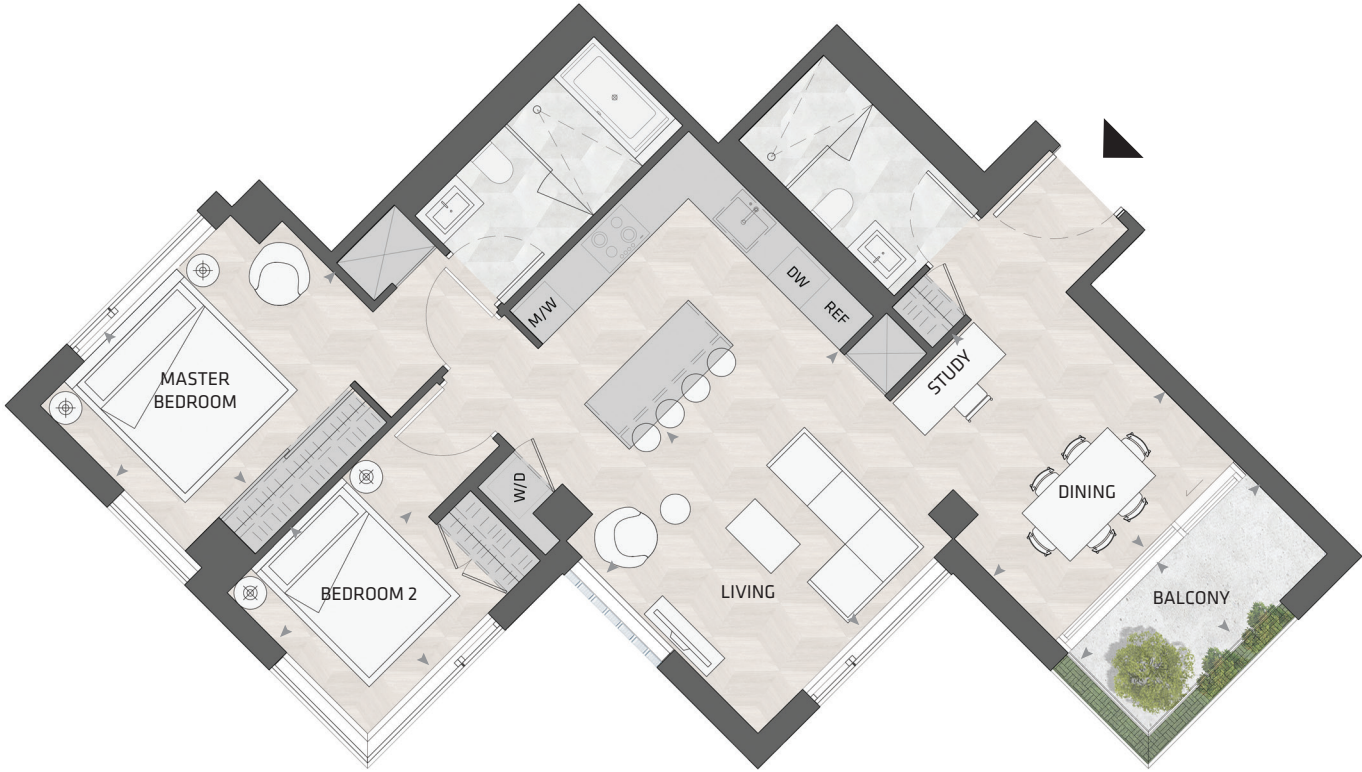
WEST MOUNTAIN KEYPLAN

Custom B&B Furniture Package included with the purchase of studio and one bedroom homes in the West Mountain

All dimensions and specifications are approximate. Certain plans are reverse or mirror image. Balcony square footages are estimated and may vary from that stated. Please see Sales Representative for details. Furniture not included. Refer to key plan for unit location and orientation. E. & O.E.

KING

HOME 920 W



2BD.85

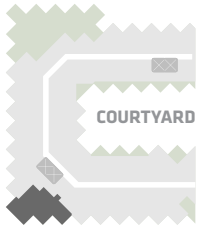
2 Bedroom + Study
2 Bathroom

Total Living:
1,095 ft²

Interior Living:
1,023 ft²

Exterior Living:
72 ft²

LIVING	14' 3" X 11' 11"
DINING	11' 0" X 12' 5"
MASTER BD	13' 1" X 8' 10"
BEDROOM 2	8' 6" X 8' 7"
BALCONY	11' 0" X 4' 11"



WEST MOUNTAIN KEYPLAN

All dimensions and specifications are approximate. Certain plans are reverse or mirror image. Balcony square footages are estimated and may vary from that stated. Please see Sales Representative for details. Furniture not included. Refer to key plan for unit location and orientation. E. & O.E.

KING

HOME 1001 W



1BD.94

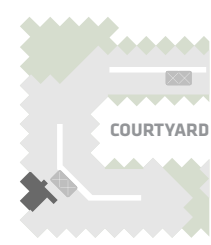
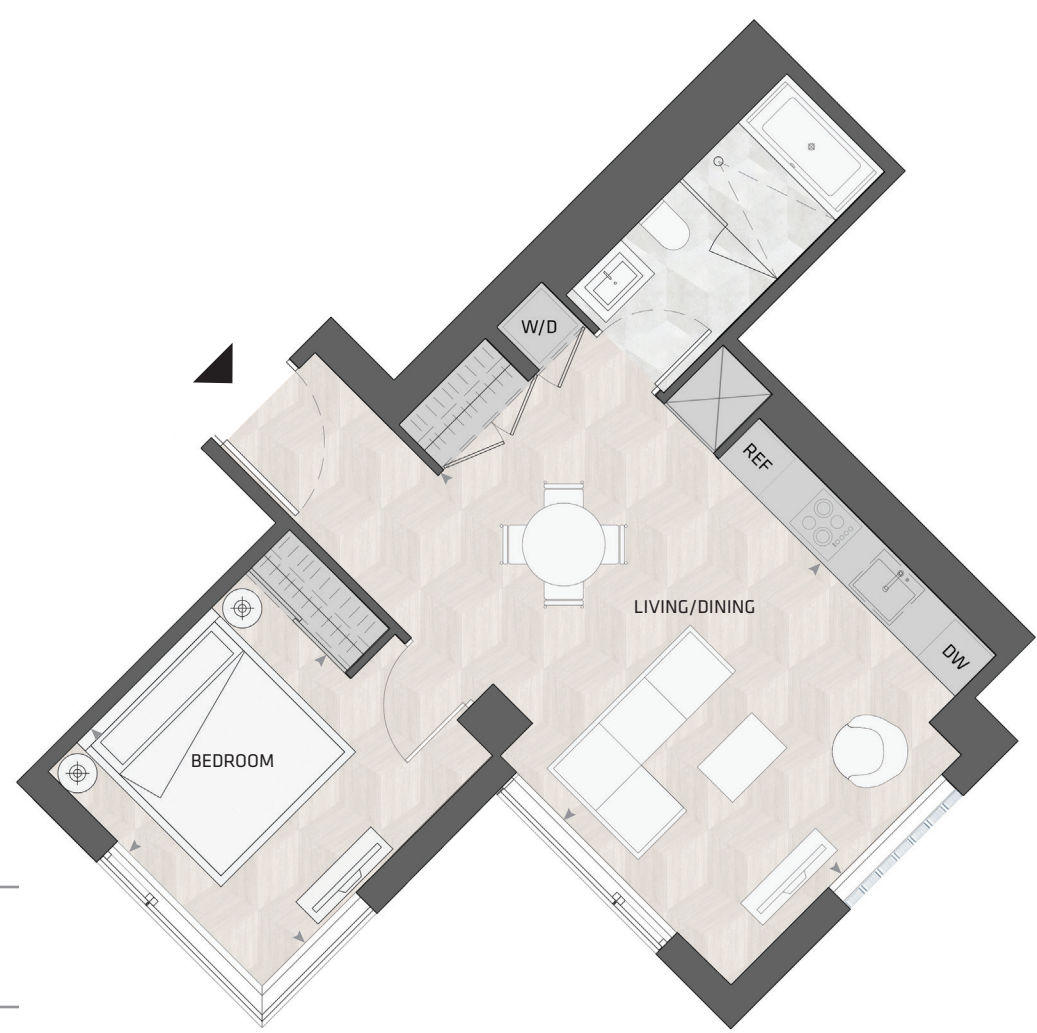
1 Bedroom
1 Bathroom

Total Living:
632 ft²

Interior Living:
632 ft²

Exterior Living:
N/A

LIVING/ DINING	13' 1" X 20' 6"
BEDROOM	10' 1" X 11' 0"



WEST MOUNTAIN KEYPLAN

Custom B&B Furniture Package included with the purchase of studio and one bedroom homes in the West Mountain

All dimensions and specifications are approximate. Certain plans are reverse or mirror image. Balcony square footages are estimated and may vary from that stated. Please see Sales Representative for details. Furniture not included. Refer to key plan for unit location and orientation. E. & O.E.

KING

HOME 1002 W



1BD.07

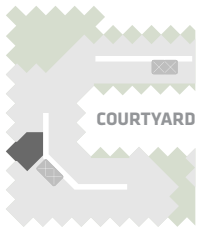
1 Bedroom + Atelier
1 Bathroom

Total Living:
723 ft²

Interior Living:
652 ft²

Exterior Living:
72 ft²

LIVING/ DINING	15' 5" X 11' 10"
BEDROOM	10' 4" X 11' 7"
ATELIER	6' 9" X 4' 3"
BALCONY	4' 11" X 11' 0"



WEST MOUNTAIN KEYPLAN

Custom B&B Furniture Package included with the purchase of studio and one bedroom homes in the West Mountain

All dimensions and specifications are approximate. Certain plans are reverse or mirror image. Balcony square footages are estimated and may vary from that stated. Please see Sales Representative for details. Furniture not included. Refer to key plan for unit location and orientation. E. & O.E.

KING

HOME 1005 W



3BD.59

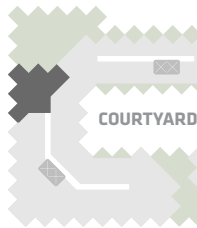
3 Bedroom + Atelier
2 Bathroom

Total Living:
1973 ft²

Interior Living:
1686 ft²

Exterior Living:
287 ft²

LIVING	11' 0" X 11' 11"
DINING	9' 4" X 15' 1"
MASTER BD	11' 9" X 11' 9"
BEDROOM 2	11' 7" X 9' 6"
BEDROOM 3	14' 10" X 11' 5"
ATELIER	7' 10" X 4' 7"
TERRACE	9' 1" X 6' 8"



WEST MOUNTAIN KEYPLAN

All dimensions and specifications are approximate. Certain plans are reverse or mirror image. Balcony square footages are estimated and may vary from that stated. Please see Sales Representative for details. Furniture not included. Refer to key plan for unit location and orientation. E. & O.E.

KING

HOME 1007 W



ST.02B

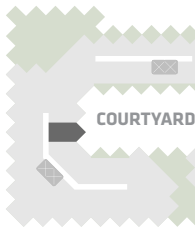
Studio
1 Bathroom

Total Living:
484 ft²

Interior Living:
484 ft²

Exterior Living:
N/A

LIVING/ BEDROOM	9' 1" X 8' 7"
DINING	10' 8" X 6' 1"



WEST MOUNTAIN KEYPLAN

Custom B&B Furniture Package included with the purchase of studio and one bedroom homes in the West Mountain

All dimensions and specifications are approximate. Certain plans are reverse or mirror image. Balcony square footages are estimated and may vary from that stated. Please see Sales Representative for details. Furniture not included. Refer to key plan for unit location and orientation. E. & O.E.

KING

HOME 1012 W



3BD.60

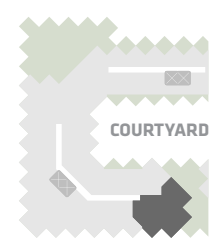
**3 Bedroom + Atelier
2 Bathroom**

**Total Living:
2156 ft²**

Interior Living:
1717 ft²

Exterior Living:
439 ft²

LIVING/DINING	12' 10" X 23' 9"
MASTER BD	11' 2" X 11' 8"
BEDROOM 2	12' 9" X 9' 5"
BEDROOM 3	11' 11" X 11' 9"
ATELIER	12' 6" X 7' 3"
TERRACE A	6' 8" X 8' 3"
TERRACE B	6' 8" X 9' 1"



WEST MOUNTAIN KEYPLAN

All dimensions and specifications are approximate. Certain plans are reverse or mirror image. Balcony square footages are estimated and may vary from that stated. Please see Sales Representative for details. Furniture not included. Refer to key plan for unit location and orientation. E. & O.E.

KING

HOME 1102 W



1BD.07

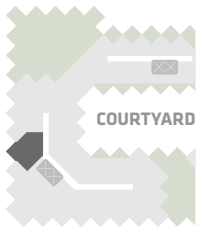
1 Bedroom + Atelier
1 Bathroom

Total Living:
723 ft²

Interior Living:
652 ft²

Exterior Living:
72 ft²

LIVING/ DINING	15' 5" X 11' 10"
BEDROOM	10' 4" X 11' 7"
ATELIER	6' 9" X 4' 3"
BALCONY	4' 11" X 11' 0"



WEST MOUNTAIN KEYPLAN

Custom B&B Furniture Package included with the purchase of studio and one bedroom homes in the West Mountain

All dimensions and specifications are approximate. Certain plans are reverse or mirror image. Balcony square footages are estimated and may vary from that stated. Please see Sales Representative for details. Furniture not included. Refer to key plan for unit location and orientation. E. & O.E.

KING

HOME 1105 W



3BD.61

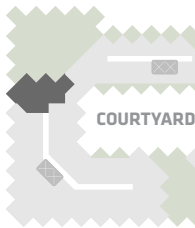
3 Bedroom
2 Bathroom

Total Living:
1796 ft²

Interior Living:
1342 ft²

Exterior Living:
454 ft²

LIVING	11' 0" X 13' 5"
DINING	10' 2" X 11' 4"
MASTER BD	9' 7" X 10' 6"
BEDROOM 2	11' 8" X 9' 3"
BEDROOM 3	10' 2" X 11' 2"
TERRACE A	9' 1" X 9' 1"
TERRACE B	8' 3" X 6' 8"

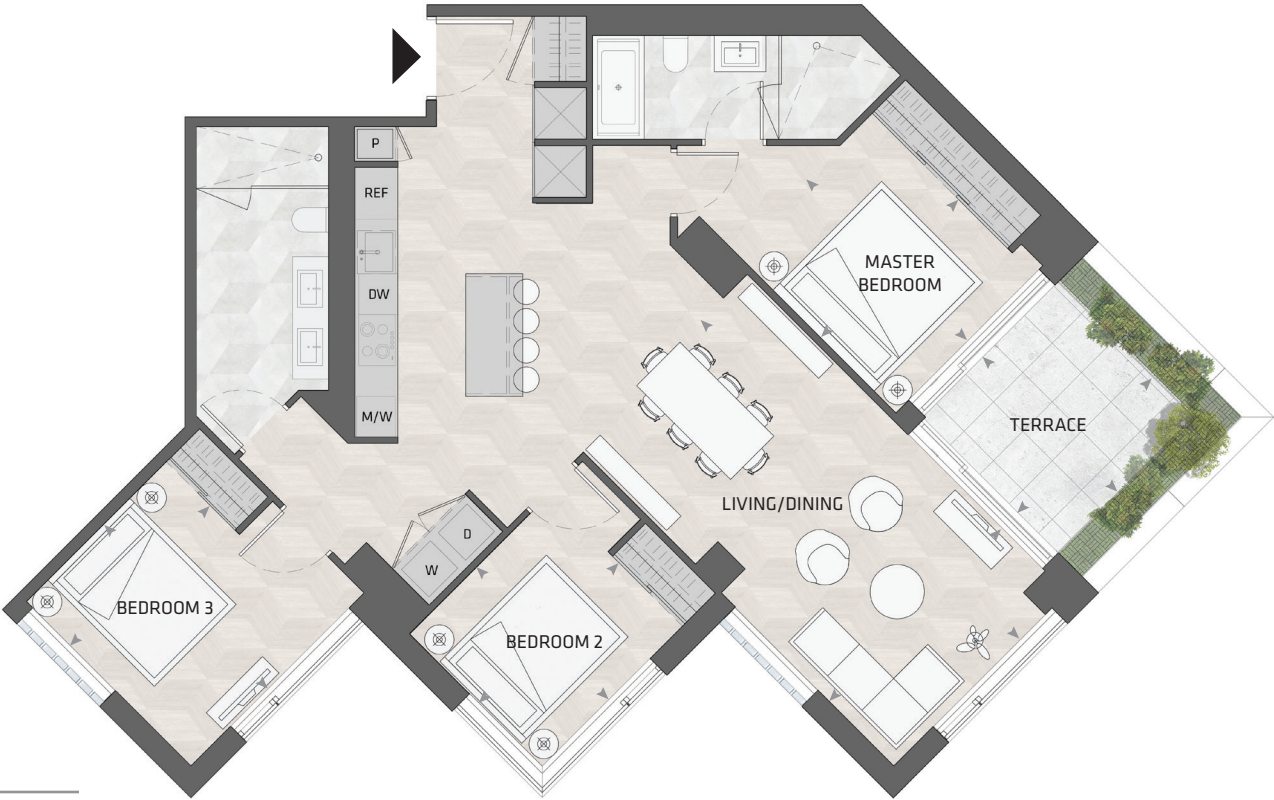


WEST MOUNTAIN KEYPLAN

All dimensions and specifications are approximate. Certain plans are reverse or mirror image. Balcony square footages are estimated and may vary from that stated. Please see Sales Representative for details. Furniture not included. Refer to key plan for unit location and orientation. E. & O.E.

KING

HOME 1112 W



3BD.45

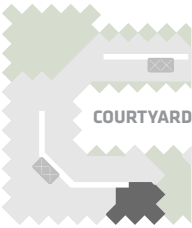
3 Bedroom
2 Bathroom

Total Living:
1497 ft²

Interior Living:
1354 ft²

Exterior Living:
143 ft²

LIVING/ DINING	11' 9" X 21' 9"
MASTER BD	9' 6" X 11' 5"
BEDROOM 2	9' 6" X 9' 0"
BEDROOM 3	9' 5" X 11' 0"
TERRACE	9' 1" X 9' 1"



WEST MOUNTAIN KEYPLAN

All dimensions and specifications are approximate. Certain plans are reverse or mirror image. Balcony square footages are estimated and may vary from that stated. Please see Sales Representative for details. Furniture not included. Refer to key plan for unit location and orientation. E. & O.E.

KING

HOME 1115 W



1BD.76D

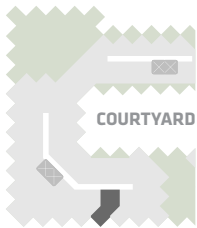
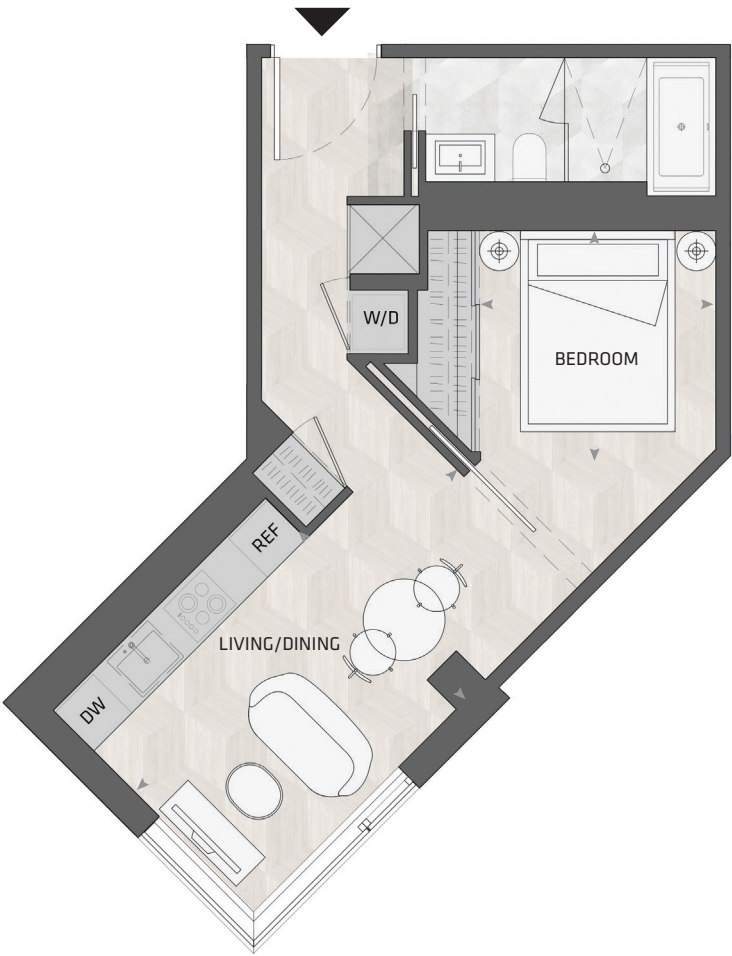
1 Bedroom
1 Bathroom

Total Living:
481 ft²

Interior Living:
481 ft²

Exterior Living:
N/A

LIVING/ DINING	8' 6" X 16' 5"
BEDROOM	8' 6" X 7' 7"



WEST MOUNTAIN KEYPLAN

Custom B&B Furniture Package included with the purchase of studio and one bedroom homes in the West Mountain

All dimensions and specifications are approximate. Certain plans are reverse or mirror image. Balcony square footages are estimated and may vary from that stated. Please see Sales Representative for details. Furniture not included. Refer to key plan for unit location and orientation. E. & O.E.

KING

HOME 1202 W



1BD.07

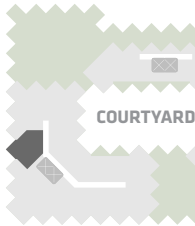
1 Bedroom + Atelier
1 Bathroom

Total Living:
723 ft²

Interior Living:
652 ft²

Exterior Living:
72 ft²

LIVING/ DINING	15' 5" X 11' 10"
BEDROOM	10' 4" X 11' 7"
ATELIER	6' 9" X 4' 3"
BALCONY	4' 11" X 11' 0"



WEST MOUNTAIN KEYPLAN

Custom B&B Furniture Package included with the purchase of studio and one bedroom homes in the West Mountain

All dimensions and specifications are approximate. Certain plans are reverse or mirror image. Balcony square footages are estimated and may vary from that stated. Please see Sales Representative for details. Furniture not included. Refer to key plan for unit location and orientation. E. & O.E.

KING

HOME 1203 W



1BD.04A

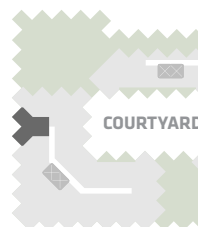
1 Bedroom + Study
1 Bathroom

Total Living:
635 ft²

Interior Living:
564 ft²

Exterior Living:
72 ft²

LIVING	11' 2" X 11' 4"
DINING	11' 9" X 6' 1"
BEDROOM	9' 10" X 11' 2"
BALCONY	11' 0" X 4' 11"



WEST MOUNTAIN KEYPLAN

Custom B&B Furniture Package included with the purchase of studio and one bedroom homes in the West Mountain

All dimensions and specifications are approximate. Certain plans are reverse or mirror image. Balcony square footages are estimated and may vary from that stated. Please see Sales Representative for details. Furniture not included. Refer to key plan for unit location and orientation. E. & O.E.

KING

HOME 1205 W



3BD.47

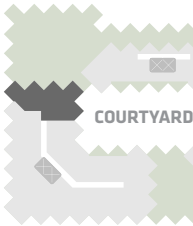
3 Bedroom + Atelier
2 Bathroom

Total Living:
1932 ft²

Interior Living:
1645 ft²

Exterior Living:
288 ft²

LIVING	11' 4" X 11' 8"
DINING	10' 10" X 13' 6"
MASTER BD	10' 11" X 10' 11"
BEDROOM 2	11' 8" X 9' 6"
BEDROOM 3	11' 9" X 9' 10"
FAMILY ROOM	10' 10" X 9' 7"
ATELIER	6' 11" X 7' 11"
TERRACE A	9' 1" X 9' 1"
TERRACE B	9' 1" X 6' 8"



WEST MOUNTAIN KEYPLAN

All dimensions and specifications are approximate. Certain plans are reverse or mirror image. Balcony square footages are estimated and may vary from that stated. Please see Sales Representative for details. Furniture not included. Refer to key plan for unit location and orientation. E. & O.E.

KING

HOME 1206 W



ST.02B

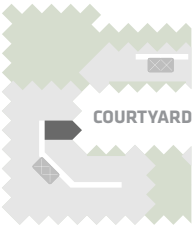
Studio
1 Bathroom

Total Living:
484 ft²

Interior Living:
484 ft²

Exterior Living:
N/A

LIVING/ BEDROOM	9' 1" X 8' 7"
DINING	10' 8" X 6' 1"



WEST MOUNTAIN KEYPLAN

Custom B&B Furniture Package included with the purchase of studio and one bedroom homes in the West Mountain

All dimensions and specifications are approximate. Certain plans are reverse or mirror image. Balcony square footages are estimated and may vary from that stated. Please see Sales Representative for details. Furniture not included. Refer to key plan for unit location and orientation. E. & O.E.

KING

HOME 1212 W



1BD.04A

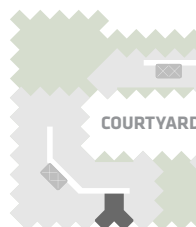
1 Bedroom + Study
1 Bathroom

Total Living:
637 ft²

Interior Living:
566 ft²

Exterior Living:
72 ft²

LIVING	11' 2" X 11' 4"
DINING	11' 9" X 6' 1"
BEDROOM	9' 10" X 11' 2"
BALCONY	11' 0" X 4' 11"



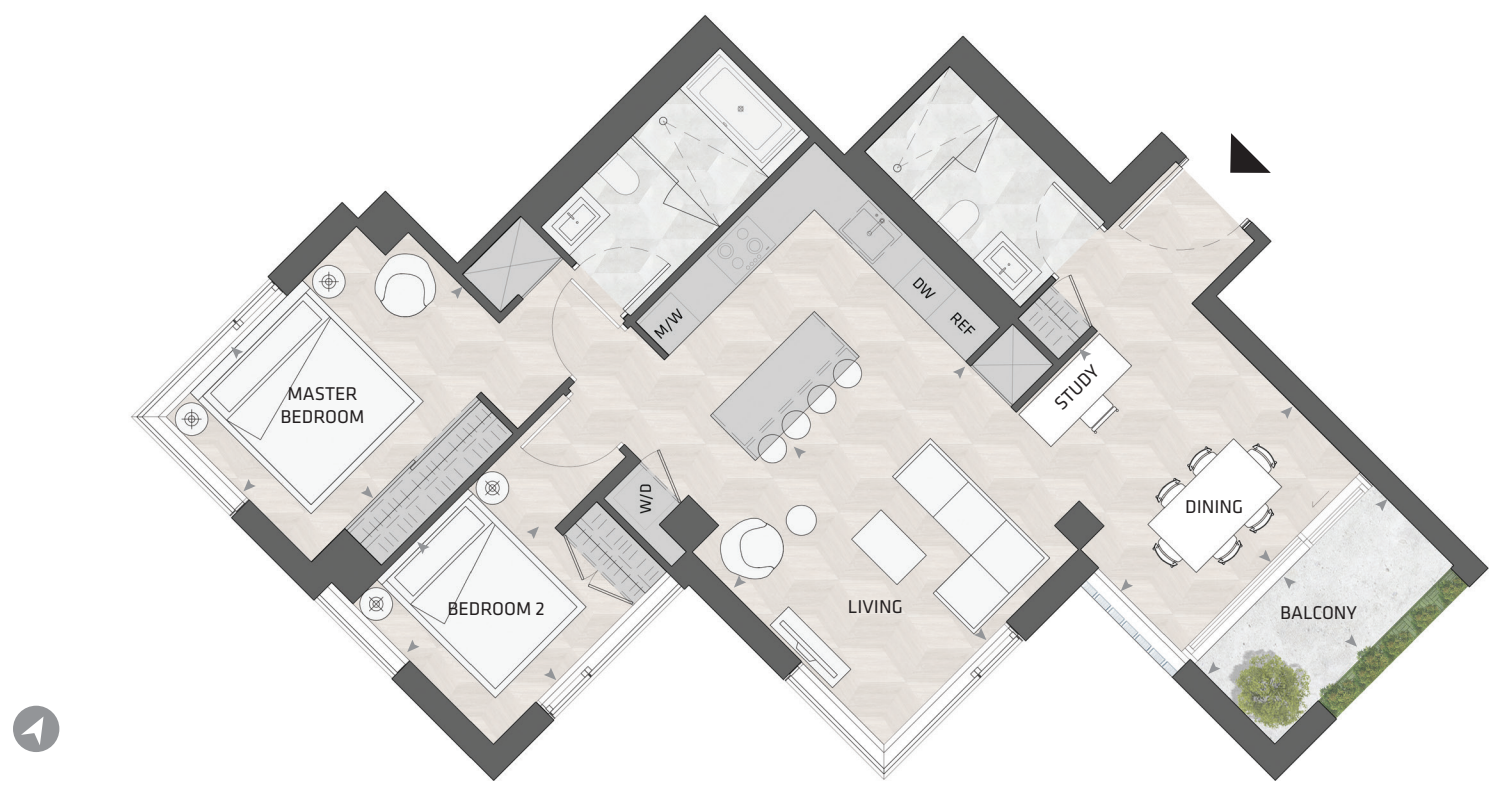
WEST MOUNTAIN KEYPLAN

Custom B&B Furniture Package included with the purchase of studio and one bedroom homes in the West Mountain

All dimensions and specifications are approximate. Certain plans are reverse or mirror image. Balcony square footages are estimated and may vary from that stated. Please see Sales Representative for details. Furniture not included. Refer to key plan for unit location and orientation. E. & O.E.

KING

HOME 1216 W



2BD.85

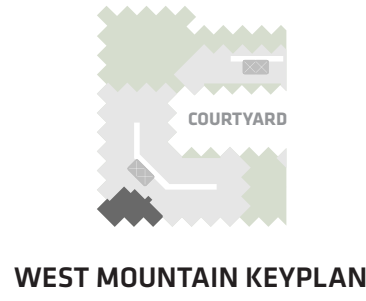
2 Bedroom + Study
2 Bathroom

Total Living:
1096 ft²

Interior Living:
1024 ft²

Exterior Living:
72 ft²

LIVING	14' 3" X 11' 11"
DINING	11' 0" X 12' 5"
MASTER BD	13' 1" X 8' 10"
BEDROOM 2	8' 6" X 8' 7"
BALCONY	11' 0" X 4' 11"



All dimensions and specifications are approximate. Certain plans are reverse or mirror image. Balcony square footages are estimated and may vary from that stated. Please see Sales Representative for details. Furniture not included. Refer to key plan for unit location and orientation. E. & O.E.

KING

HOME 1501 W



1BD.94

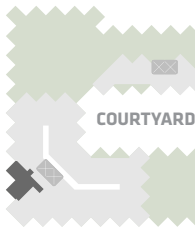
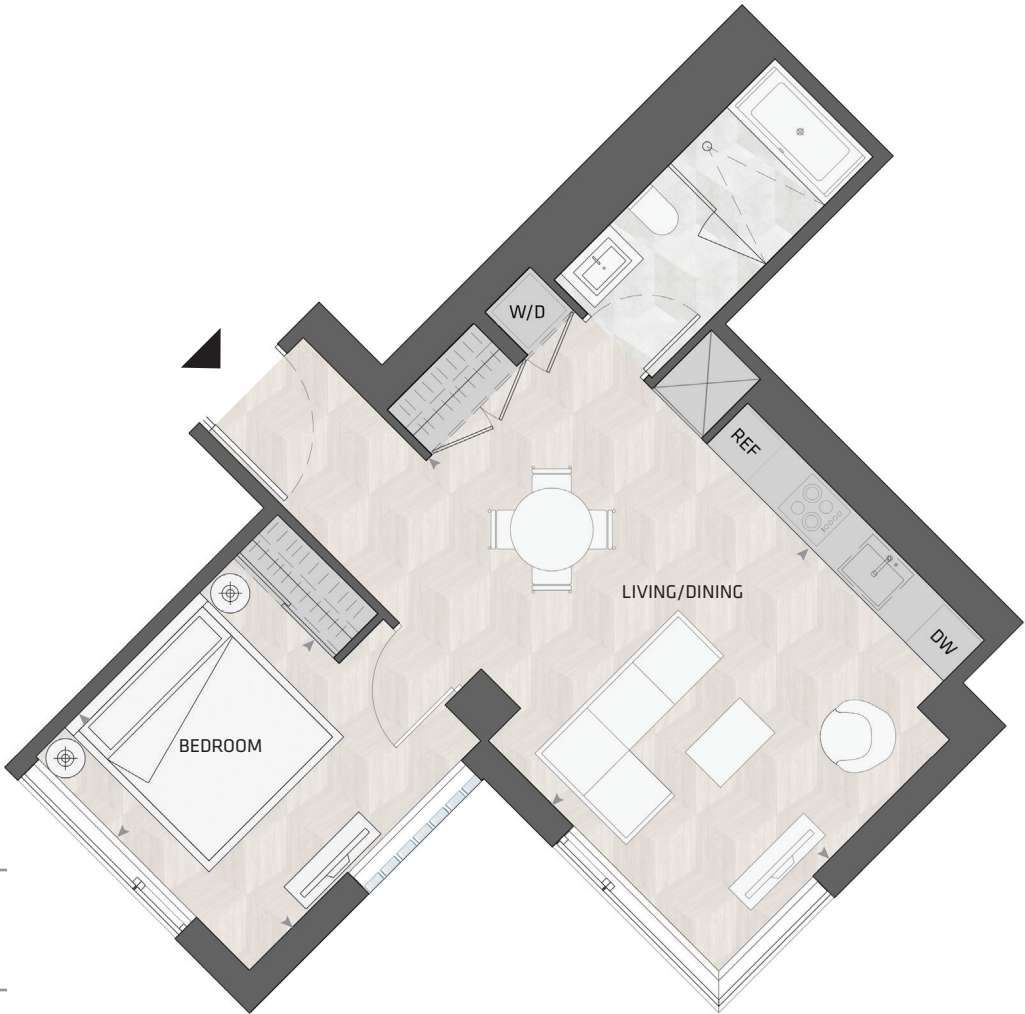
1 Bedroom
1 Bathroom

Total Living:
662 ft²

Interior Living:
662 ft²

Exterior Living:
N/A

LIVING/ DINING	13' 1" X 20' 6"
BEDROOM	10' 1" X 11' 0"



WEST MOUNTAIN KEYPLAN

Custom B&B Furniture Package included with the purchase of studio and one bedroom homes in the West Mountain

All dimensions and specifications are approximate. Certain plans are reverse or mirror image. Balcony square footages are estimated and may vary from that stated. Please see Sales Representative for details. Furniture not included. Refer to key plan for unit location and orientation. E. & O.E.

KING

HOME 1503 W



3BD.62A

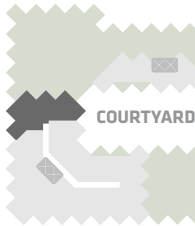
3 Bedroom
2 Bathroom

Total Living:
2292 ft²

Interior Living:
1672 ft²

Exterior Living:
620 ft²

LIVING	13' 5" X 13' 1"
DINING	8' 11" X 8' 10"
MASTER BD	17' 4" X 23' 9"
BEDROOM 2	9' 11" X 11' 0"
BEDROOM 3	10' 0" X 11' 2"
TERRACE A	6' 8" X 8' 3"
TERRACE B	9' 1" X 9' 1"



WEST MOUNTAIN KEYPLAN

All dimensions and specifications are approximate. Certain plans are reverse or mirror image. Balcony square footages are estimated and may vary from that stated. Please see Sales Representative for details. Furniture not included. Refer to key plan for unit location and orientation. E. & O.E.

KING

HOME 1505 W



ST.02B

Studio
1 Bathroom

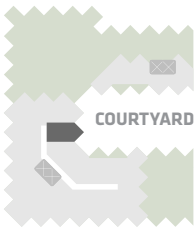
Total Living:
484 ft²

Interior Living:
484 ft²

Exterior Living:
N/A

LIVING/
BEDROOM
9' 1" X 8' 7"

DINING
10' 8" X 6' 1"



WEST MOUNTAIN KEYPLAN

Custom B&B Furniture Package included with the purchase of studio and one bedroom homes in the West Mountain

All dimensions and specifications are approximate. Certain plans are reverse or mirror image. Balcony square footages are estimated and may vary from that stated. Please see Sales Representative for details. Furniture not included. Refer to key plan for unit location and orientation. E. & O.E.



2BD.61

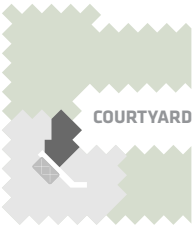
2 Bedroom
2 Bathroom

Total Living:
1246 ft²

Interior Living:
936 ft²

Exterior Living:
310 ft²

LIVING	13' 5" X 11' 5"
DINING	8' 10" X 9' 3"
MASTER BD	8' 10" X 11' 7"
BEDROOM 2	10' 0" X 9' 11"
TERRACE A	6' 8" X 8' 3"
TERRACE B	8' 3" X 6' 8"



WEST MOUNTAIN KEYPLAN

All dimensions and specifications are approximate. Certain plans are reverse or mirror image. Balcony square footages are estimated and may vary from that stated. Please see Sales Representative for details. Furniture not included. Refer to key plan for unit location and orientation. E. & O.E.

KING

HOME 1706 W



3BD.31

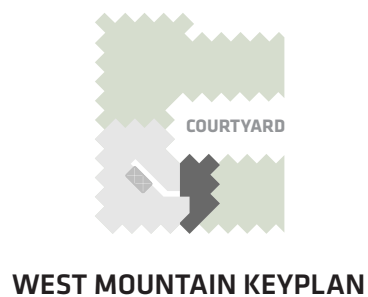
**3 Bedroom + Atelier
2 Bathroom**

**Total Living:
2234 ft²**

Interior Living:
1637 ft²

Exterior Living:
597 ft²

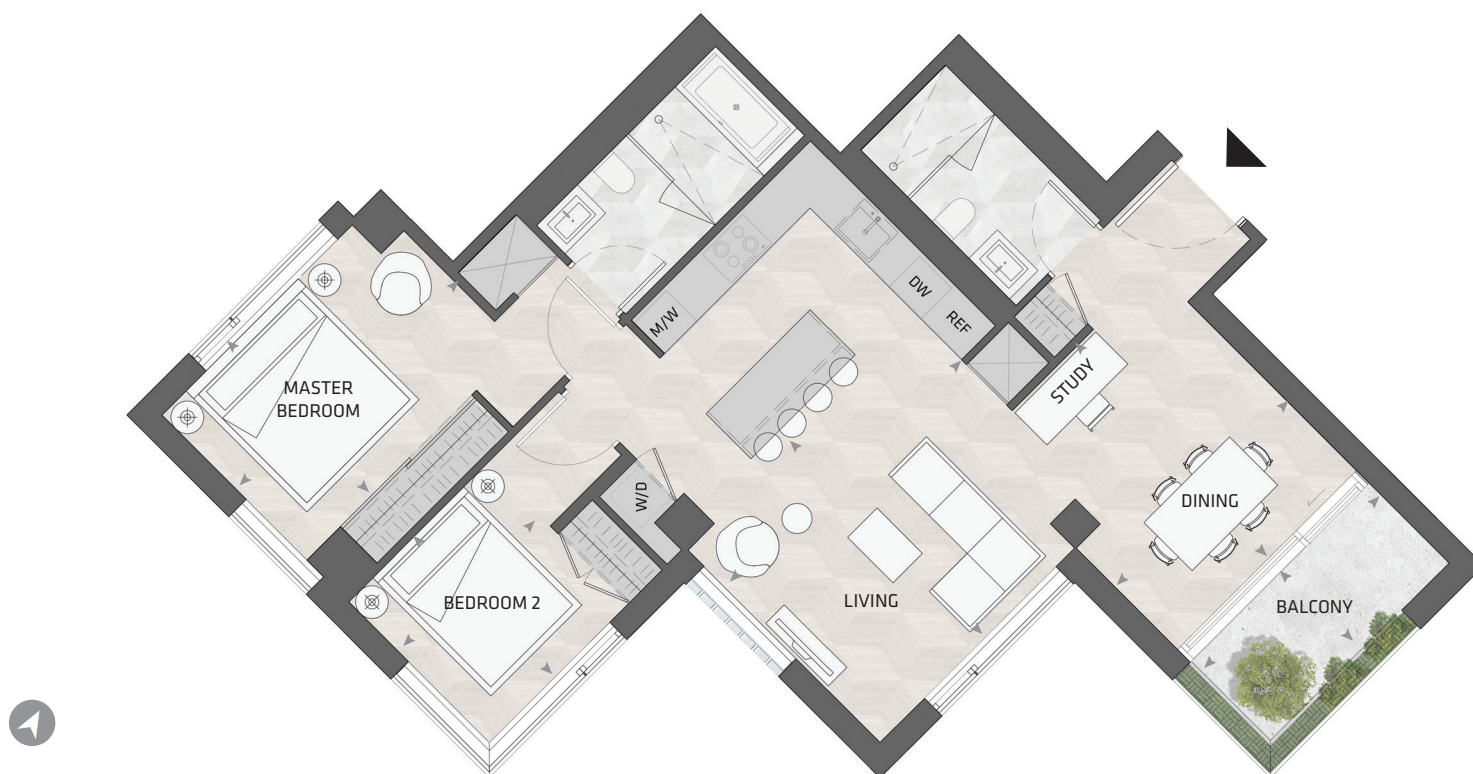
LIVING	11' 8" X 12' 9"
DINING	11' 11" X 10' 10"
MASTER BD	11' 7" X 10' 7"
BEDROOM 2	11' 9" X 9' 5"
BEDROOM 3	11' 2" X 12' 7"
ATELIER	4' 9" X 5' 3"
TERRACE A	6' 8" X 20' 1"
TERRACE B	6' 8" X 8' 3"



All dimensions and specifications are approximate. Certain plans are reverse or mirror image. Balcony square footages are estimated and may vary from that stated. Please see Sales Representative for details. Furniture not included. Refer to key plan for unit location and orientation. E. & O.E.

KING

HOME 1708 W



2BD.85

2 Bedroom + Study
2 Bathroom

Total Living:
1096 ft²

Interior Living:
1024 ft²

Exterior Living:
72 ft²

LIVING	14' 3" X 11' 11"
DINING	11' 0" X 12' 5"
MASTER BD	13' 1" X 8' 10"
BEDROOM 2	8' 6" X 8' 7"
BALCONY	11' 0" X 4' 11"



All dimensions and specifications are approximate. Certain plans are reverse or mirror image. Balcony square footages are estimated and may vary from that stated. Please see Sales Representative for details. Furniture not included. Refer to key plan for unit location and orientation. E. & O.E.

KING

HOME 501 5



1BD.02

1 Bedroom + Atelier
1 Bathroom

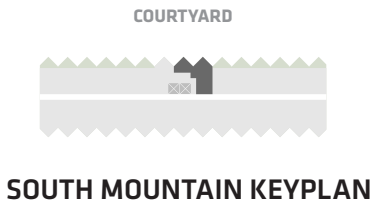
Total Living:
638 ft²

Interior Living:
638 ft²

Exterior Living:
N/A



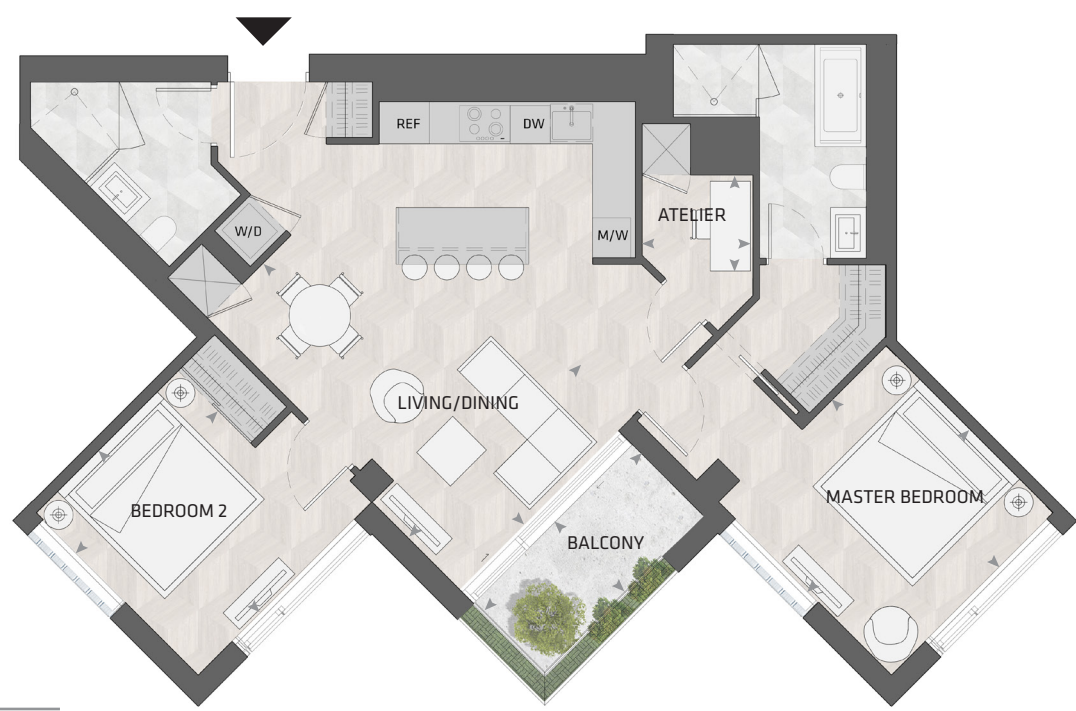
LIVING	10' 2" X 8' 8"
DINING	7' 3" X 9' 6"
BEDROOM	14' 5" X 12' 3"
ATELIER	5' 5" X 5' 5"



All dimensions and specifications are approximate. Certain plans are reverse or mirror image. Balcony square footages are estimated and may vary from that stated. Please see Sales Representative for details. Furniture not included. Refer to key plan for unit location and orientation. E. & O.E.

KING

HOME 507 5



2BD.67B

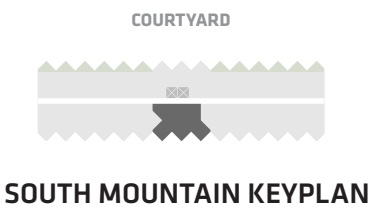
2 Bedroom + Atelier
2 Bathroom

Total Living:
1185 ft²

Interior Living:
1113 ft²

Exterior Living:
72 ft²

LIVING/ DINING	12' 0" X 18' 3"
MASTER BD	11' 2" x 11' 7"
BEDROOM 2	9' 10" x 11' 2"
ATELIER	5' 5" x 4' 8"
BALCONY	11' 0" x 4' 11"



All dimensions and specifications are approximate. Certain plans are reverse or mirror image. Balcony square footages are estimated and may vary from that stated. Please see Sales Representative for details. Furniture not included. Refer to key plan for unit location and orientation. E. & O.E.

KING

HOME 508 5



1BD.01F

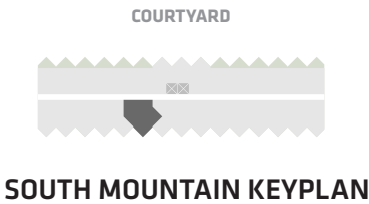
1 Bedroom + Atelier
1 Bathroom

Total Living:
724 ft²

Interior Living:
652 ft²

Exterior Living:
72 ft²

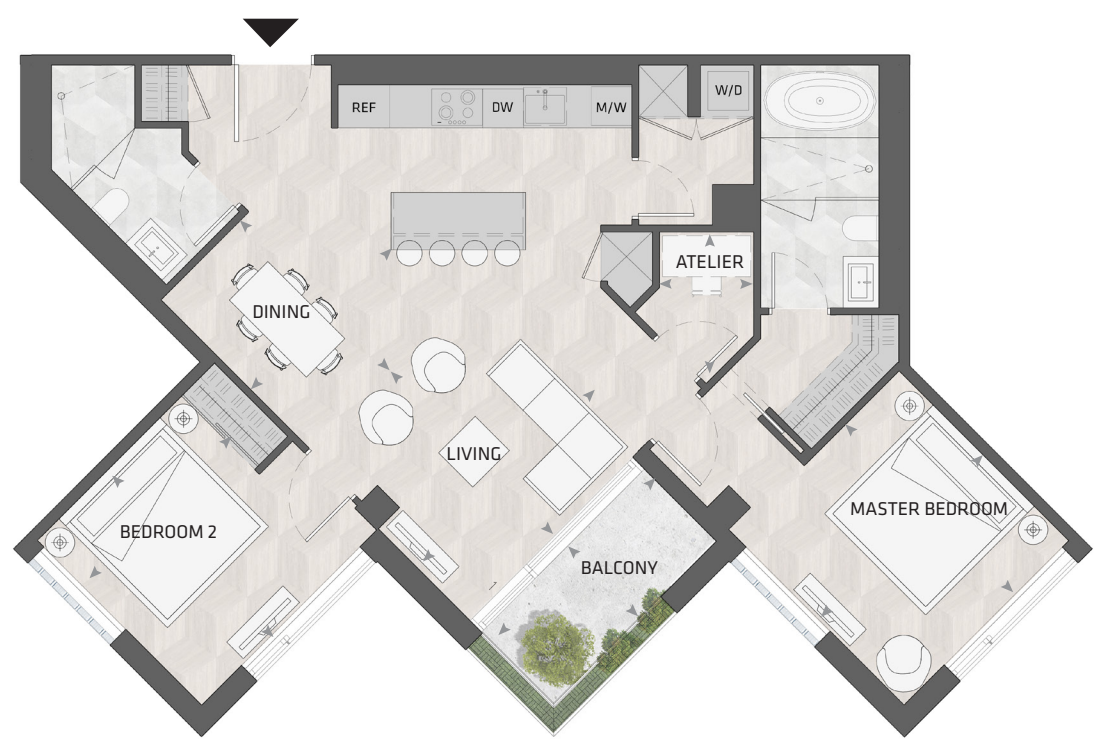
LIVING	10' 11" X 10' 3"
DINING	10' 6" X 8' 6"
BEDROOM	10' 2" X 9' 10"
ATELIER	7' 1" X 4' 8"
BALCONY	11' 0" X 4' 11"



All dimensions and specifications are approximate. Certain plans are reverse or mirror image. Balcony square footages are estimated and may vary from that stated. Please see Sales Representative for details. Furniture not included. Refer to key plan for unit location and orientation. E. & O.E.

KING

HOME 509 5



2BD.67A

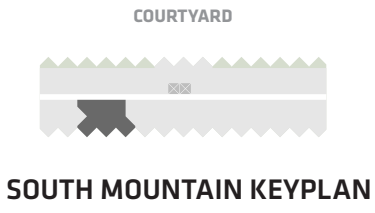
2 Bedroom + Atelier
2 Bathroom

Total Living:
1211 ft²

Interior Living:
1139 ft²

Exterior Living:
72 ft²

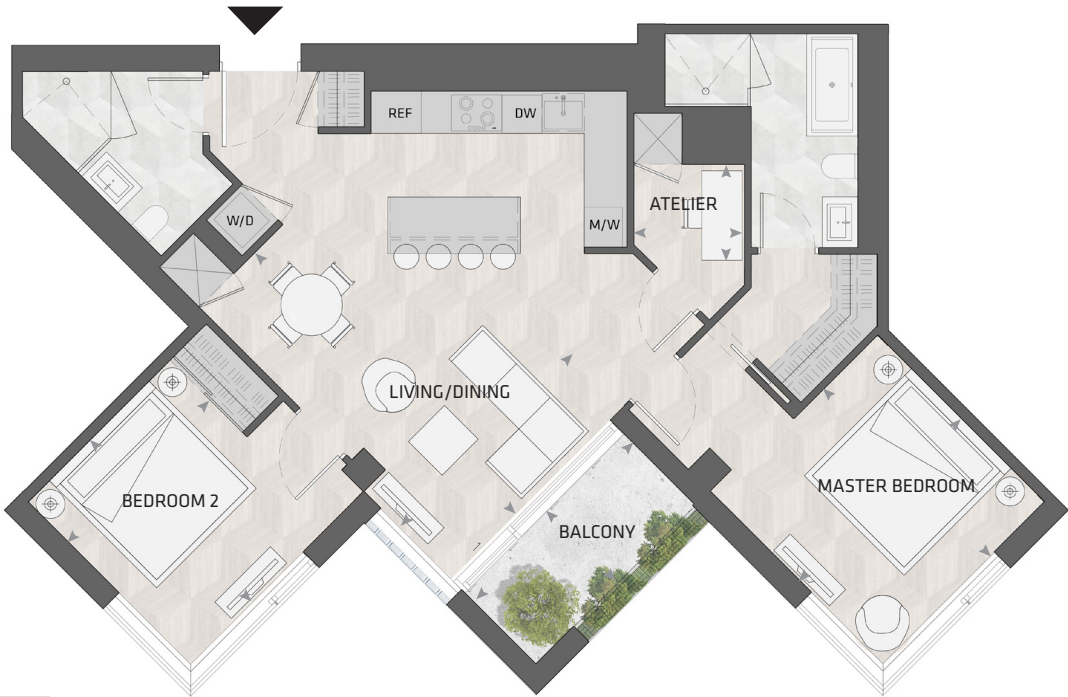
LIVING	12' 3" X 11' 7"
DINING	9' 7" X 9' 8"
MASTER BD	11' 0" x 11' 4"
BEDROOM 2	9' 8" x 11' 1"
ATELIER	4' 7" x 5' 0"
BALCONY	11' 0" x 4' 11"



All dimensions and specifications are approximate. Certain plans are reverse or mirror image. Balcony square footages are estimated and may vary from that stated. Please see Sales Representative for details. Furniture not included. Refer to key plan for unit location and orientation. E. & O.E.

KING

HOME 607 5



2BD.67B

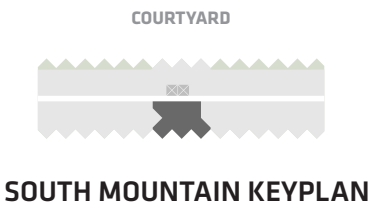
2 Bedroom + Atelier
2 Bathroom

Total Living:
1185 ft²

Interior Living:
1113 ft²

Exterior Living:
72 ft²

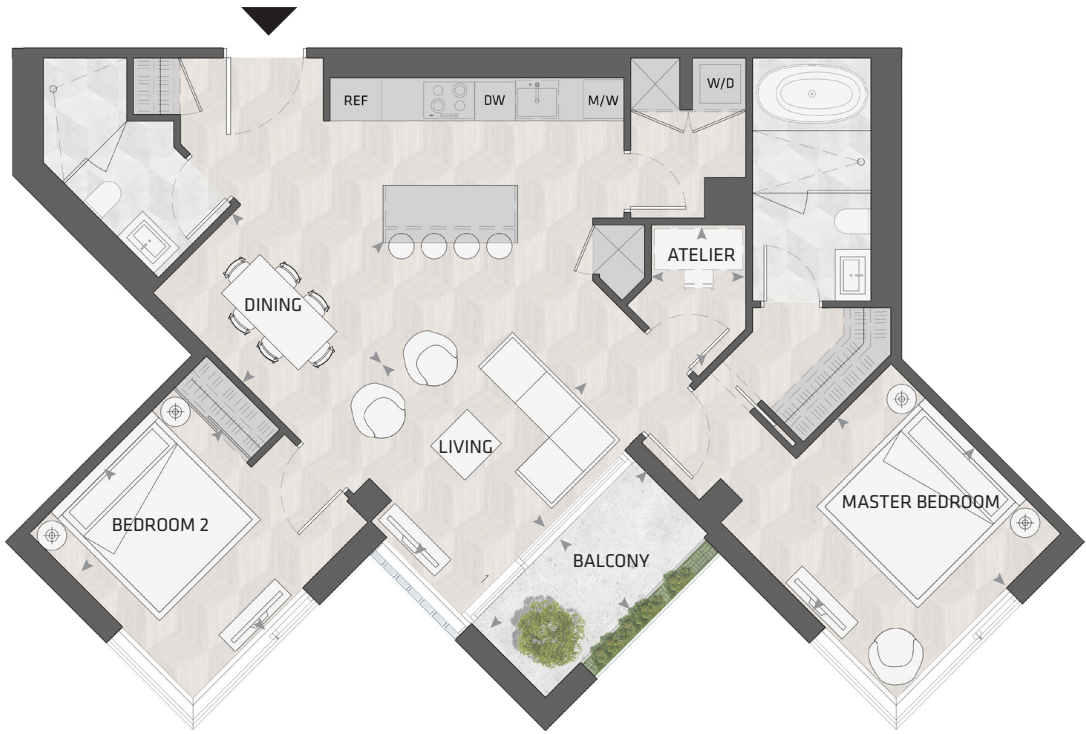
LIVING/ DINING	12' 0" X 18' 3"
MASTER BD	11' 2" x 11' 7"
BEDROOM 2	9' 10" x 11' 2"
ATELIER	5' 5" x 4' 8"
BALCONY	11' 0" x 4' 11"



All dimensions and specifications are approximate. Certain plans are reverse or mirror image. Balcony square footages are estimated and may vary from that stated. Please see Sales Representative for details. Furniture not included. Refer to key plan for unit location and orientation. E. & O.E.

KING

HOME 609 5



2BD.67A

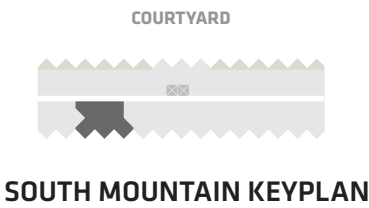
2 Bedroom + Atelier
2 Bathroom

Total Living:
1196 ft²

Interior Living:
1139 ft²

Exterior Living:
72 ft²

LIVING	12' 3" X 11' 7"
DINING	9' 7" X 9' 8"
MASTER BD	11' 0" x 11' 4"
BEDROOM 2	9' 8" x 11' 1"
ATELIER	4' 7" x 5' 0"
BALCONY	11' 0" x 4' 11"



All dimensions and specifications are approximate. Certain plans are reverse or mirror image. Balcony square footages are estimated and may vary from that stated. Please see Sales Representative for details. Furniture not included. Refer to key plan for unit location and orientation. E. & O.E.

KING

HOME 702 5



2BD.74

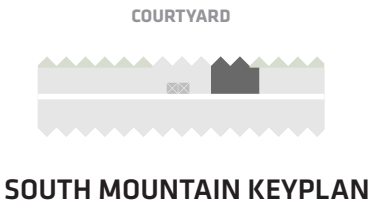
2 Bedroom
2 Bathroom

Total Living:
1210 ft²

Interior Living:
1094 ft²

Exterior Living:
116

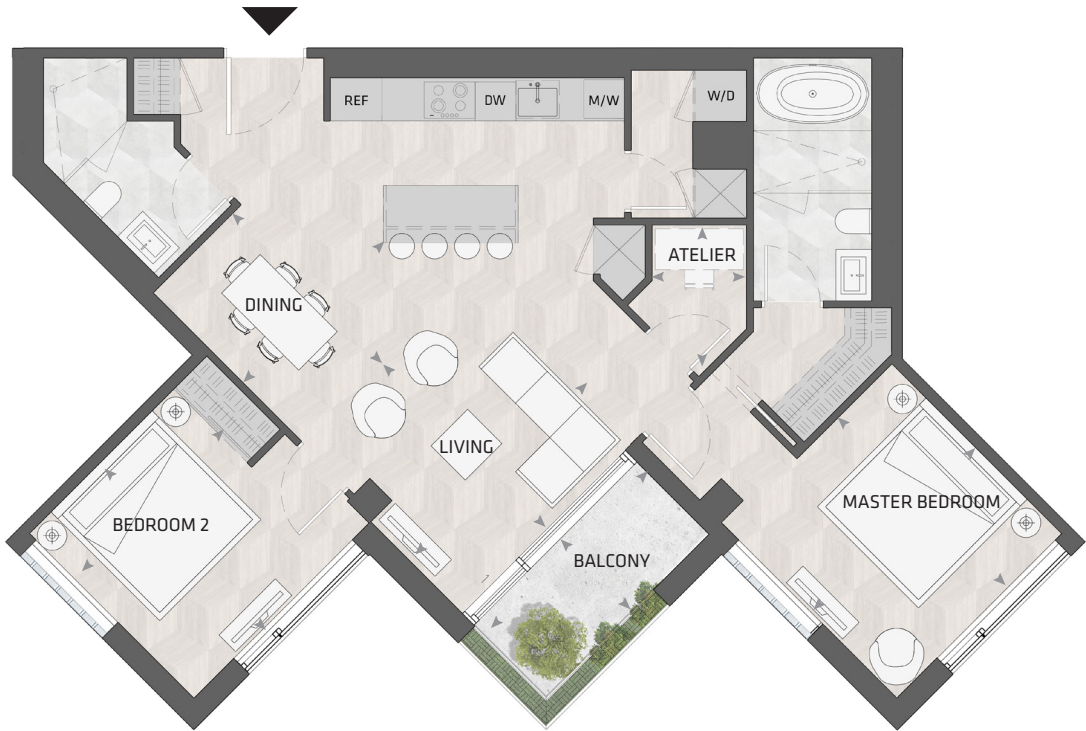
LIVING	13' 2" X 10' 10"
DINING	11' 3" X 13' 2"
MASTER BD	12' 11" X 11' 6"
BEDROOM 2	9' 11" X 13' 2"
BALCONY	11' 0" X 4' 11"



All dimensions and specifications are approximate. Certain plans are reverse or mirror image. Balcony square footages are estimated and may vary from that stated. Please see Sales Representative for details. Furniture not included. Refer to key plan for unit location and orientation. E. & O.E.

KING

HOME 703 5



2BD.67C

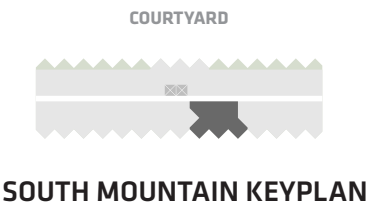
2 Bedroom + Atelier
2 Bathroom

Total Living:
1211 ft²

Interior Living:
1139 ft²

Exterior Living:
72 ft²

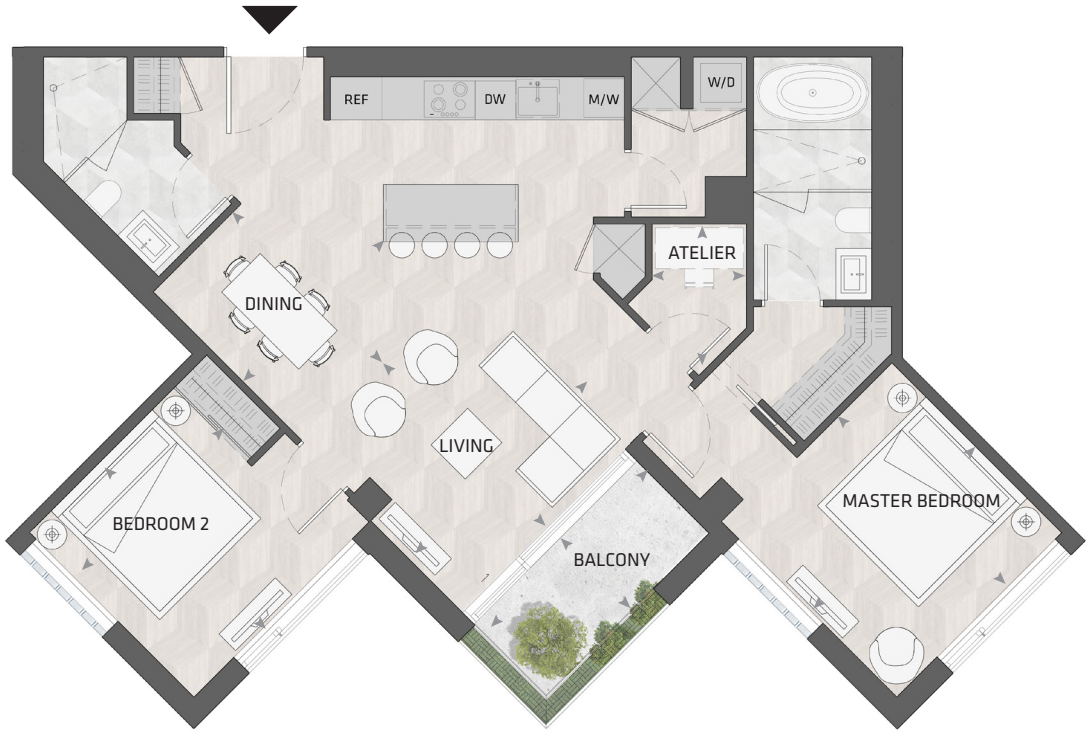
LIVING	12' 3" X 11' 7"
DINING	9' 7" X 9' 8"
MASTER BD	11' 0" x 11' 4"
BEDROOM 2	9' 8" x 11' 1"
ATELIER	4' 7" x 5' 0"
BALCONY	11' 0" x 4' 11"



All dimensions and specifications are approximate. Certain plans are reverse or mirror image. Balcony square footages are estimated and may vary from that stated. Please see Sales Representative for details. Furniture not included. Refer to key plan for unit location and orientation. E. & O.E.

KING

HOME 707 5



2BD.67A

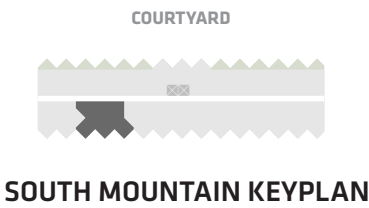
2 Bedroom + Atelier
2 Bathroom

Total Living:
1211 ft²

Interior Living:
1139 ft²

Exterior Living:
72 ft²

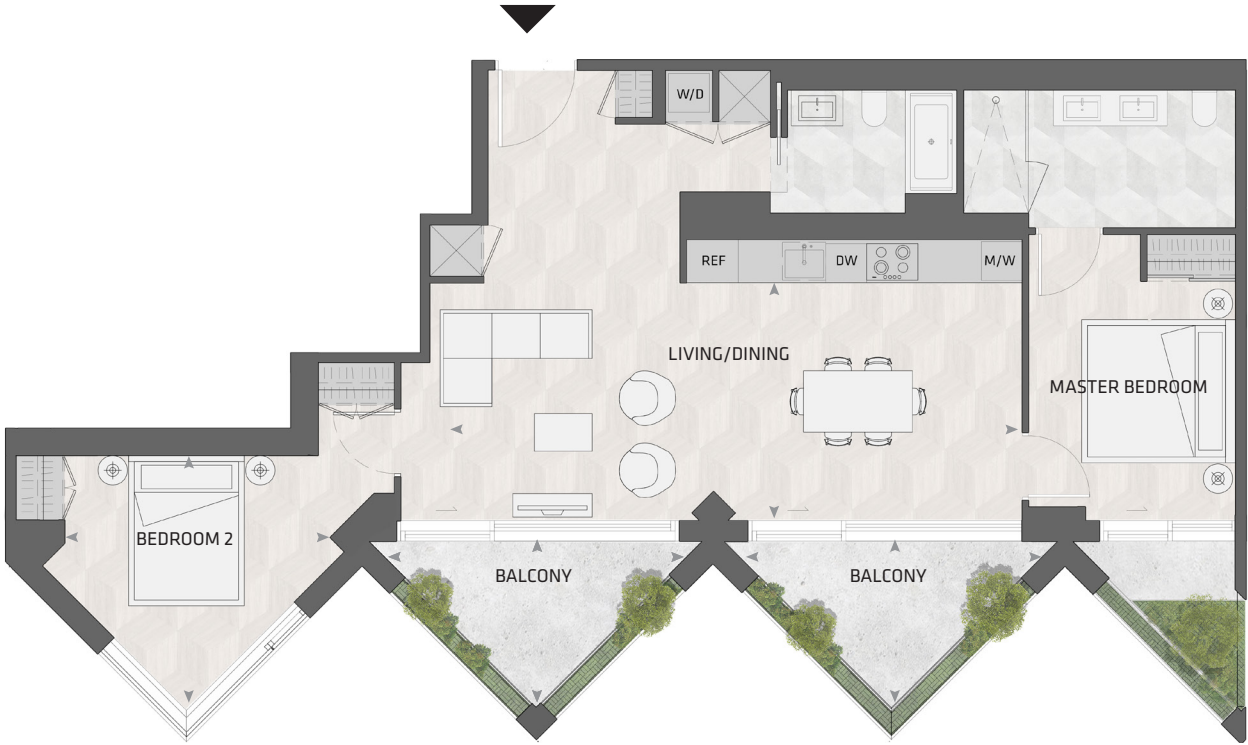
LIVING	12' 3" X 11' 7"
DINING	9' 7" X 9' 8"
MASTER BD	11' 0" x 11' 4"
BEDROOM 2	9' 8" x 11' 1"
ATELIER	4' 7" x 5' 0"
BALCONY	11' 0" x 4' 11"



All dimensions and specifications are approximate. Certain plans are reverse or mirror image. Balcony square footages are estimated and may vary from that stated. Please see Sales Representative for details. Furniture not included. Refer to key plan for unit location and orientation. E. & O.E.

KING

HOME 709 5



2BD.74

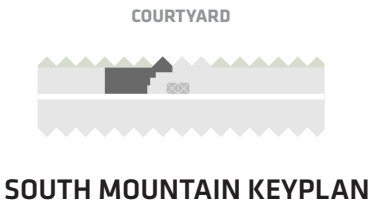
2 Bedroom
2 Bathroom

Total Living:
1348 ft²

Interior Living:
1127 ft²

Exterior Living:
221

LIVING/ DINING	28' 6" X 11' 8"
MASTER BD	11' 9" X 9' 11"
BEDROOM 2	12' 3" X 12' 2"
BALCONY	13' 0" X 7' 9"



All dimensions and specifications are approximate. Certain plans are reverse or mirror image. Balcony square footages are estimated and may vary from that stated. Please see Sales Representative for details. Furniture not included. Refer to key plan for unit location and orientation. E. & O.E.

KING

HOME 802 S



2BD.74

2 Bedroom
2 Bathroom

Total Living:
1210 ft²

Interior Living:
1094 ft²

Exterior Living:
116

LIVING	13' 2" X 10' 10"
DINING	11' 3" X 13' 2"
MASTER BD	12' 11" X 11' 6"
BEDROOM 2	9' 11" X 13' 2"
BALCONY	11' 0" X 4' 11"



COURTYARD

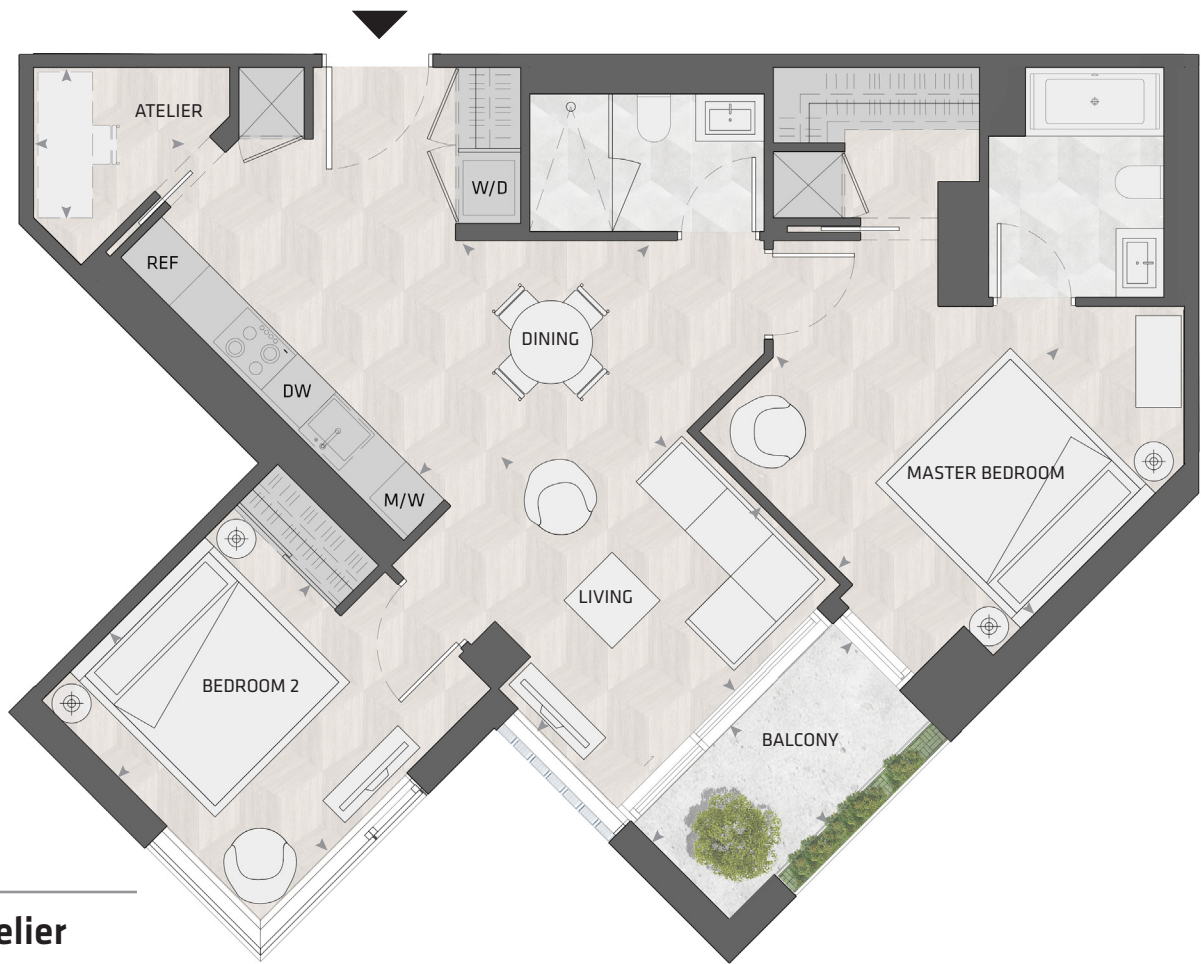


SOUTH MOUNTAIN KEYPLAN

All dimensions and specifications are approximate. Certain plans are reverse or mirror image. Balcony square footages are estimated and may vary from that stated. Please see Sales Representative for details. Furniture not included. Refer to key plan for unit location and orientation. E. & O.E.

KING

HOME 807 5



2BD.68

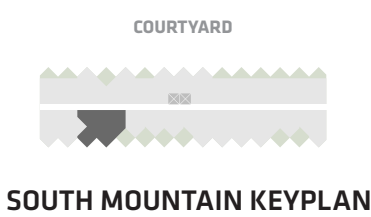
2 Bedroom + Atelier
2 Bathroom

Total Living:
1062 ft²

Interior Living:
997 ft²

Exterior Living:
64 ft²

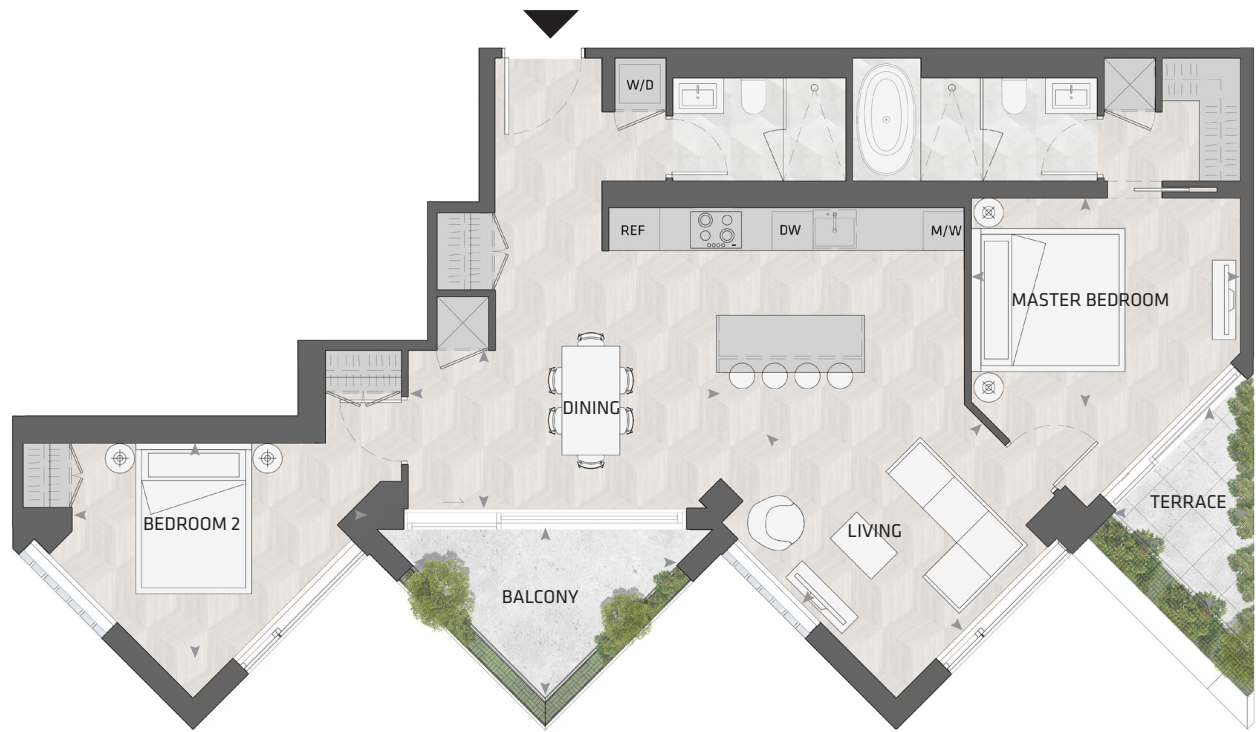
LIVING	11' 8" x 12' 0"
DINING	11' 11" x 10' 9"
MASTER BD	11' 3" x 13' 3"
BEDROOM 2	9' 10" x 11' 2"
ATELIER	5' 5" x 5' 5"
BALCONY	9' 6" x 4' 11"



All dimensions and specifications are approximate. Certain plans are reverse or mirror image. Balcony square footages are estimated and may vary from that stated. Please see Sales Representative for details. Furniture not included. Refer to key plan for unit location and orientation. E. & O.E.

KING

HOME 809 5



2BD.75A

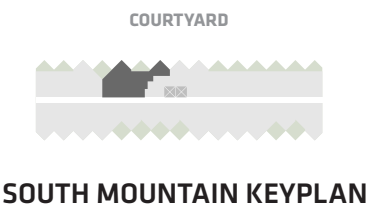
2 Bedroom
2 Bathroom

Total Living:
1348 ft²

Interior Living:
1188 ft²

Exterior Living:
160 ft²

LIVING	12' 8" X 13' 5"
DINING	15' 1" x 7' 10"
MASTER BD	13' 1' X 9' 10"
BEDROOM 2	14' 4" x 10' 4"
BALCONY	13' 0" x 7' 9"
TERRACE	6' 4" x 3' 6"



All dimensions and specifications are approximate. Certain plans are reverse or mirror image. Balcony square footages are estimated and may vary from that stated. Please see Sales Representative for details. Furniture not included. Refer to key plan for unit location and orientation. E. & O.E.

KING

HOME 901 5



1BD.02

1 Bedroom + Atelier
1 Bathroom

Total Living:
638 ft²

Interior Living:
638 ft²

Exterior Living:
N/A

LIVING	10' 2" X 8' 8"
DINING	7' 3" X 9' 6"
BEDROOM	14' 5" X 12' 3"
ATELIER	5' 5" X 5' 5"



COURTYARD



SOUTH MOUNTAIN KEYPLAN

All dimensions and specifications are approximate. Certain plans are reverse or mirror image. Balcony square footages are estimated and may vary from that stated. Please see Sales Representative for details. Furniture not included. Refer to key plan for unit location and orientation. E. & O.E.

KING

HOME 902 5



2BD.76

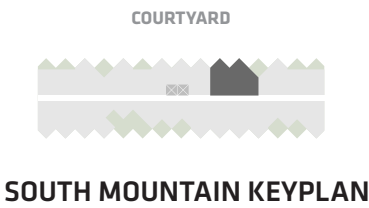
2 Bedroom + Atelier
2 Bathroom

Total Living:
1208 ft²

Interior Living:
1136 ft²

Exterior Living:
72 ft²

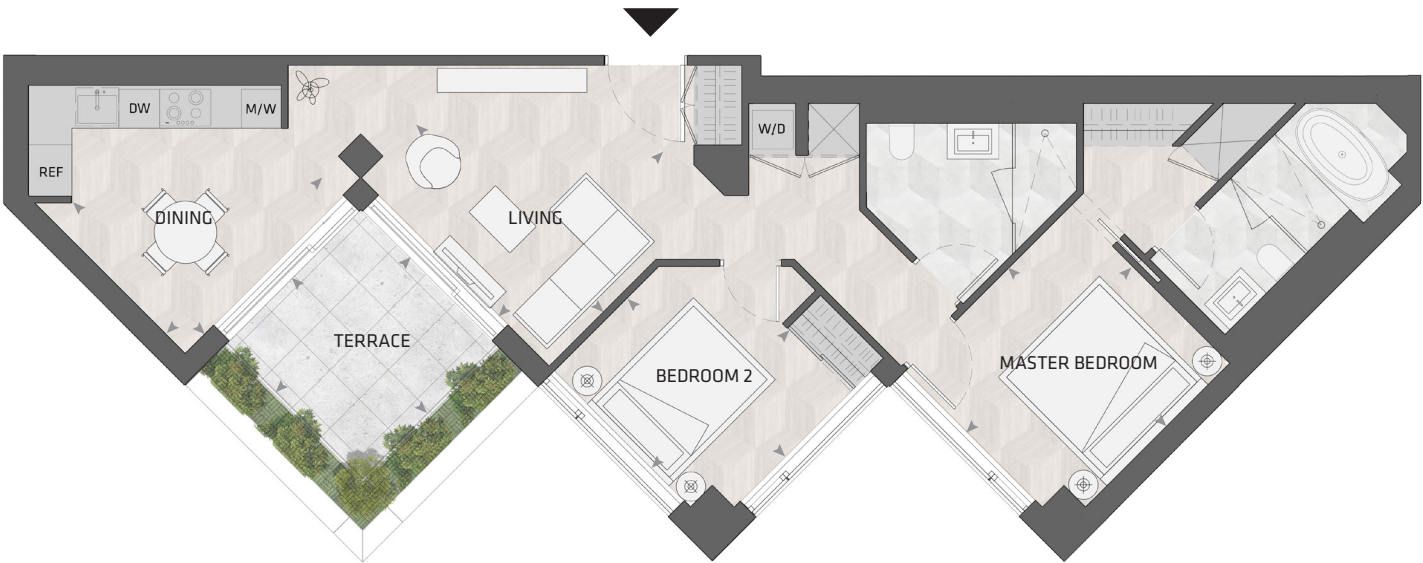
LIVING	10' 0" x 9' 3"
DINING	10' 11" x 11' 9"
MASTER BD	12' 0" x 11' 8"
BEDROOM 2	9' 8" x 9' 2"
ATELIER	6' 10" x 6' 10"
TERRACE	3' 6" x 6' 4"



All dimensions and specifications are approximate. Certain plans are reverse or mirror image. Balcony square footages are estimated and may vary from that stated. Please see Sales Representative for details. Furniture not included. Refer to key plan for unit location and orientation. E. & O.E.

KING

HOME 906 5



2BD.70

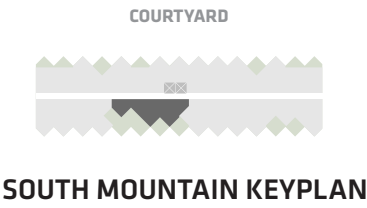
2 Bedroom
2 Bathroom

Total Living:
1179 ft²

Interior Living:
1036 ft²

Exterior Living:
143 ft²

LIVING	9' 4" X 12' 10"
DINING	11' 0" X 9' 0"
MASTER BD	11' 4" X 10' 9"
BEDROOM 2	10' 9" X 9' 4"
TERRACE	9' 1" X 9' 1"



All dimensions and specifications are approximate. Certain plans are reverse or mirror image. Balcony square footages are estimated and may vary from that stated. Please see Sales Representative for details. Furniture not included. Refer to key plan for unit location and orientation. E. & O.E.

KING

HOME 908 5



1BD.13

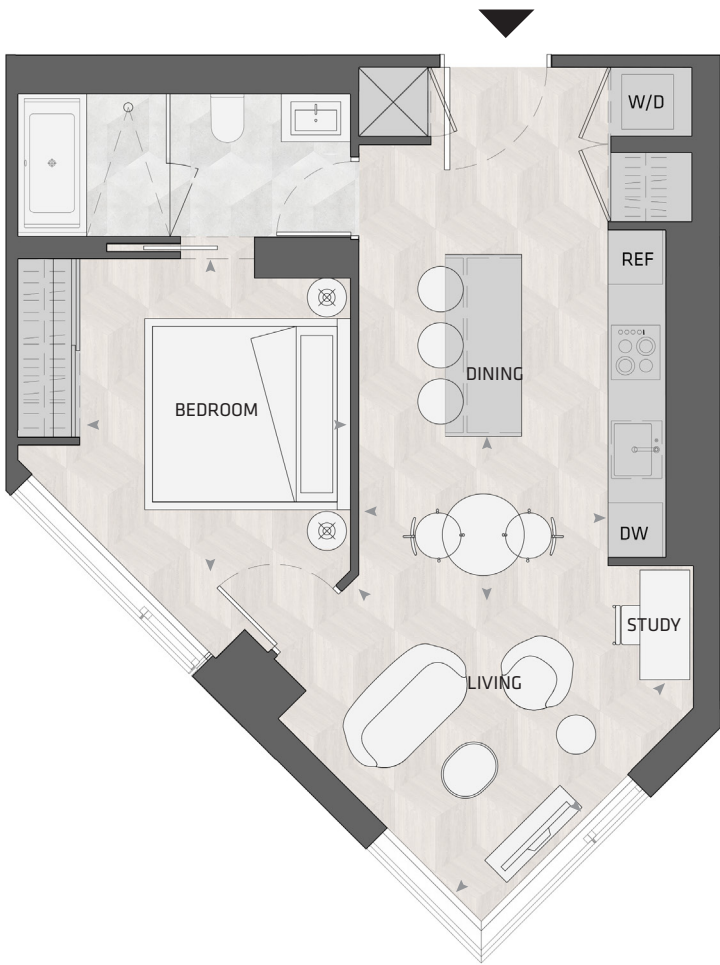
1 Bedroom + Study
1 Bathroom

Total Living:
654 ft²

Interior Living:
654 ft²

Exterior Living:
N/A

LIVING	12' 4" X 12' 0"
DINING	9' 0" X 6' 6"
BEDROOM	9' 9" X 11' 3"



COURTYARD

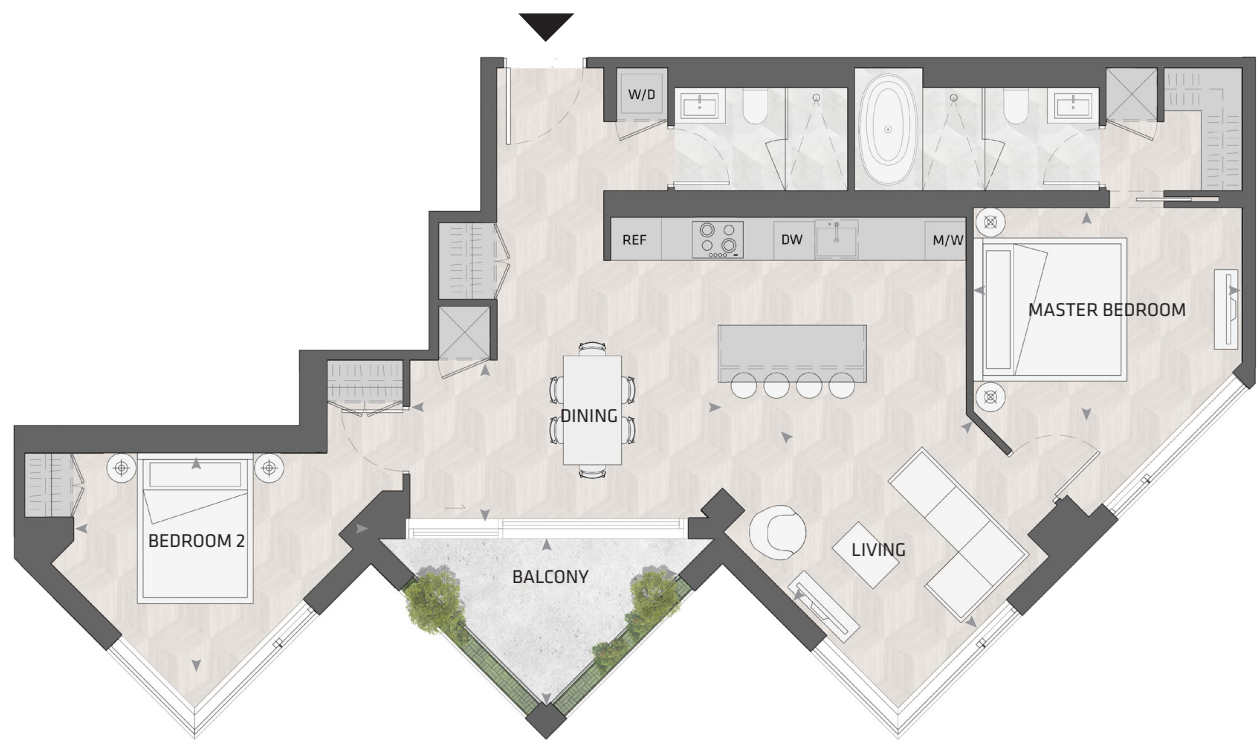


SOUTH MOUNTAIN KEYPLAN

All dimensions and specifications are approximate. Certain plans are reverse or mirror image. Balcony square footages are estimated and may vary from that stated. Please see Sales Representative for details. Furniture not included. Refer to key plan for unit location and orientation. E. & O.E.

KING

HOME 909 5



2BD.75B

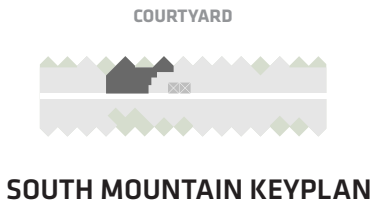
2 Bedroom
2 Bathroom

Total Living:
1267 ft²

Interior Living:
1179 ft²

Exterior Living:
88 ft²

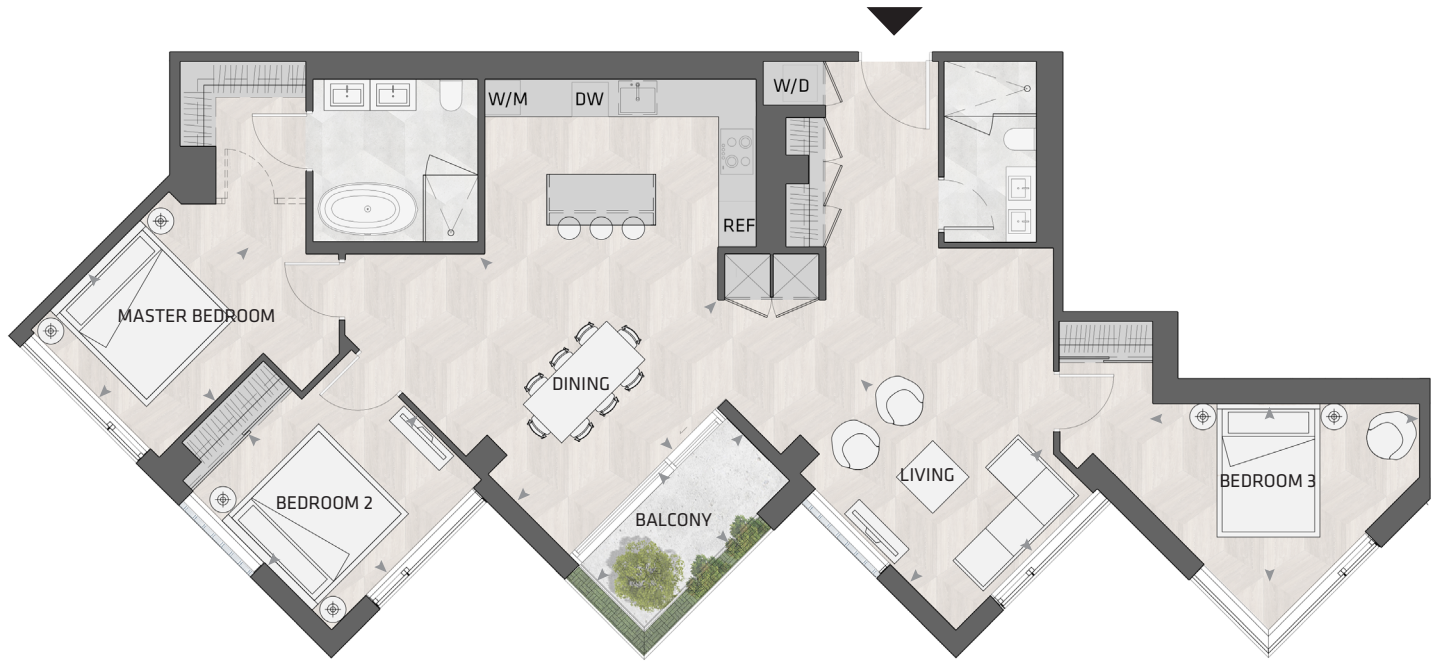
LIVING	12' 8" X 13' 5"
DINING	15' 1" x 7' 10"
MASTER BD	13' 1' X 9' 10"
BEDROOM 2	14' 4" x 10' 4"
BALCONY	13' 0" x 7' 9"



All dimensions and specifications are approximate. Certain plans are reverse or mirror image. Balcony square footages are estimated and may vary from that stated. Please see Sales Representative for details. Furniture not included. Refer to key plan for unit location and orientation. E. & O.E.

KING

HOME 1001 S



3BD.55

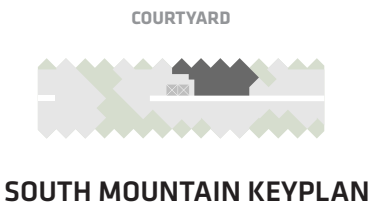
3 Bedroom
2 Bathroom

Total Living:
1675 ft²

Interior Living:
1603 ft²

Exterior Living:
72 ft²

LIVING	10' 6" X 12' 0"
DINING	15' 2" X 12' 0"
MASTER BD	10' 10" X 9' 10"
BEDROOM 2	10' 7" X 11' 8"
BEDROOM 3	14' 5" X 8' 9"
ATELIER	5' 4" X 5' 11"
BALCONY	11' 0" X 4' 11"



All dimensions and specifications are approximate. Certain plans are reverse or mirror image. Balcony square footages are estimated and may vary from that stated. Please see Sales Representative for details. Furniture not included. Refer to key plan for unit location and orientation. E. & O.E.

KING

HOME 1003 S



3BD.54

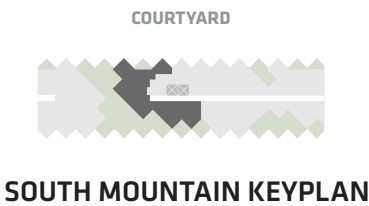
3 Bedroom + Family
2 Bathroom

Total Living:
2594 ft²

Interior Living:
2053 ft²

Exterior Living:
541 ft²

LIVING	11' 8" X 13' 9"
DINING	12' 0" X 12' 0"
MASTER BD	11' 0" X 18' 0"
BEDROOM 2	11' 9" X 10' 9"
BEDRRM 3	14' 2" X 10' 4"
STUDY	6' 8" X 6' 8"
TERRACE A	6' 8" X 9' 1"
TERRACE B	6' 8" X 8' 3"
BALCONY	13' 0" X 7' 9"



All dimensions and specifications are approximate. Certain plans are reverse or mirror image. Balcony square footages are estimated and may vary from that stated. Please see Sales Representative for details. Furniture not included. Refer to key plan for unit location and orientation. E. & O.E.

KING

HOME 1101 S



1BD.02

1 Bedroom + Atelier
1 Bathroom

Total Living:
638 ft²

Interior Living:
638 ft²

Exterior Living:
N/A

LIVING	10' 2" X 8' 8"
DINING	7' 3" X 9' 6"
BEDROOM	14' 5" X 12' 3"
ATELIER	5' 5" X 5' 5"

COURTYARD



SOUTH MOUNTAIN KEYPLAN

All dimensions and specifications are approximate. Certain plans are reverse or mirror image. Balcony square footages are estimated and may vary from that stated. Please see Sales Representative for details. Furniture not included. Refer to key plan for unit location and orientation. E. & O.E.

KING

HOME 1105 S



3BD.14

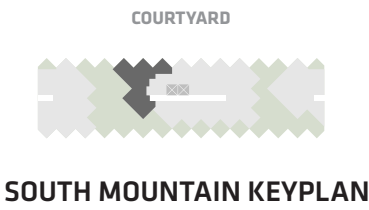
3 Bedroom
2 Bathroom

Total Living:
1404 ft²

Interior Living:
1260 ft²

Exterior Living:
144 ft²

LIVING	11' 9" X 11' 9"
DINING	11' 10" X 9' 7"
MASTER BD	8' 9' X 10' 0"
BEDROOM 2	8' 6" X 10' 9"
BEDROOM 3	10' 9" X 13' 5"
TERRACE	9' 1" X 6' 8"



All dimensions and specifications are approximate. Certain plans are reverse or mirror image. Balcony square footages are estimated and may vary from that stated. Please see Sales Representative for details. Furniture not included. Refer to key plan for unit location and orientation. E. & O.E.

KING

HOME 1201 S



3BD.58

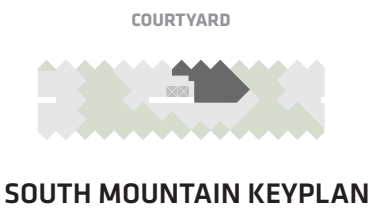
3 Bedroom
2 Bathroom

Total Living:
1741 ft²

Interior Living:
1431 ft²

Exterior Living:
310 ft²

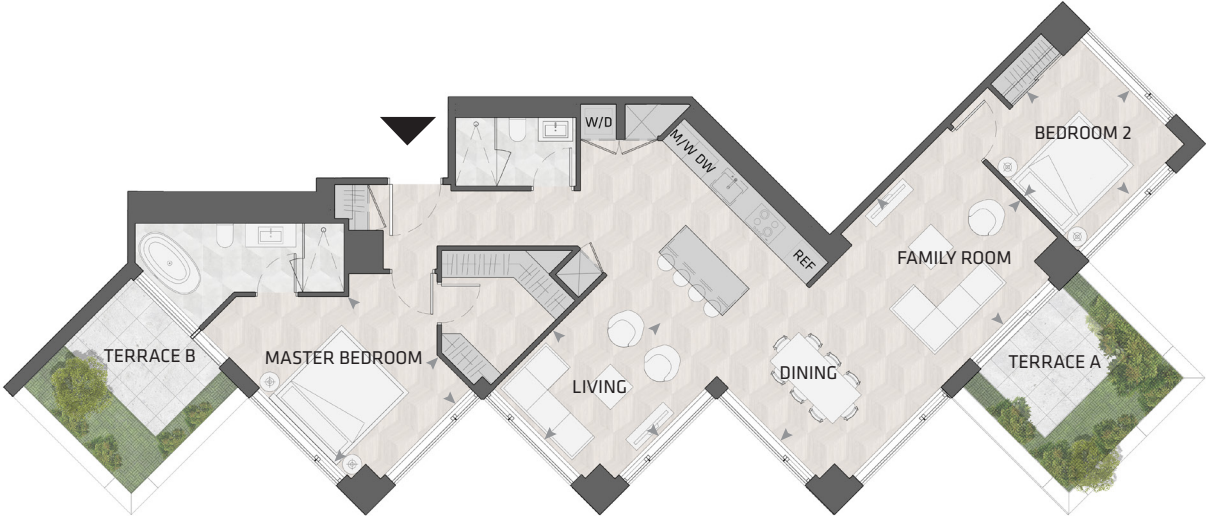
LIVING	12' 0" X 13' 5"
DINING	12' 6" X 10' 1"
MASTER BD	12' 5" X 10' 3"
BEDROOM 2	10' 2" X 11' 0"
BEDROOM 3	10' 4" X 8' 6"
TERRACE	6' 8" X 8' 3"



All dimensions and specifications are approximate. Certain plans are reverse or mirror image. Balcony square footages are estimated and may vary from that stated. Please see Sales Representative for details. Furniture not included. Refer to key plan for unit location and orientation. E. & O.E.

KING

HOME 1202 S



2BD.78

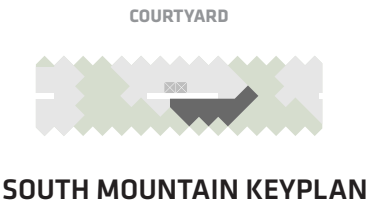
2 Bedroom + Family
2 Bathroom

Total Living:
1792 ft²

Interior Living:
1482 ft²

Exterior Living:
310 ft²

LIVING	12' 0" X 10' 9"
FAMILY RM/ DINING	24' 6" X 13' 0"
MASTER BD	10' 9" X 11' 3"
BEDROOM 2	10' 11" X 10' 8"
TERRACE A	8' 3" X 6' 8"
TERRACE B	9' 1" X 6' 8"



All dimensions and specifications are approximate. Certain plans are reverse or mirror image. Balcony square footages are estimated and may vary from that stated. Please see Sales Representative for details. Furniture not included. Refer to key plan for unit location and orientation. E. & O.E.

KING

HOME 1203 S



3BD.22

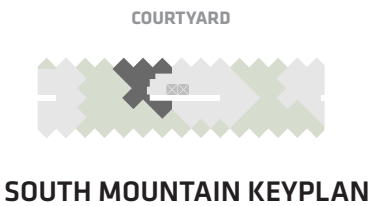
3 Bedroom
2 Bathroom

Total Living:
1432 ft²

Interior Living:
1289 ft²

Exterior Living:
143 ft²

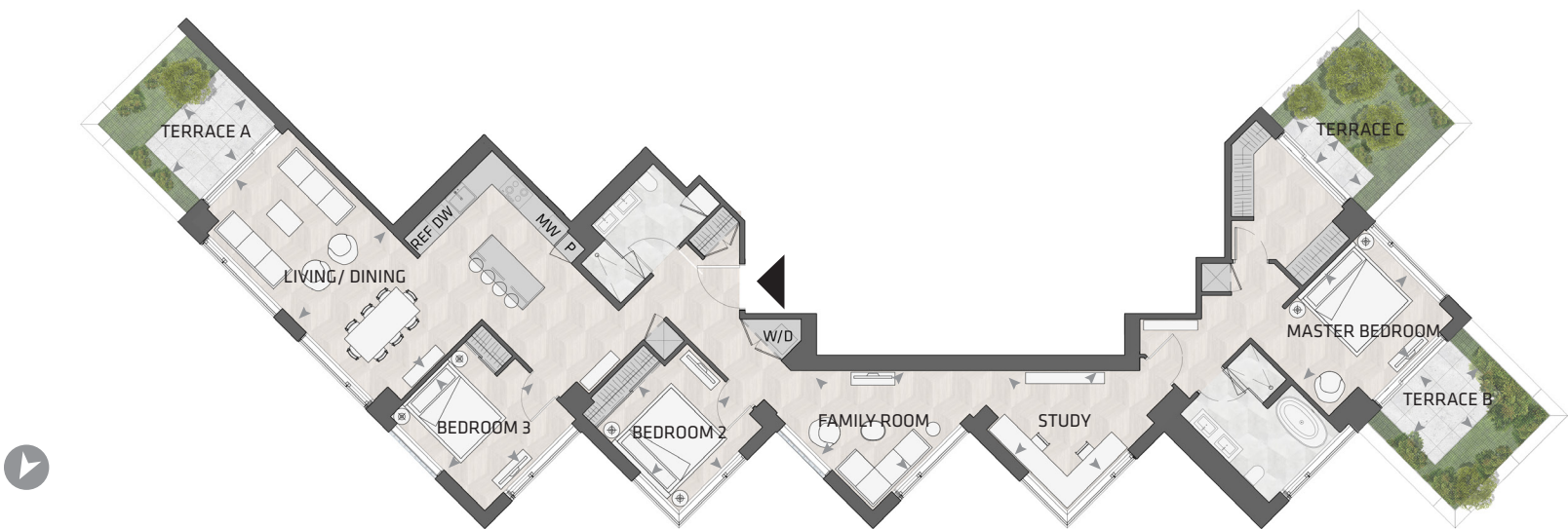
LIVING	11' 9" X 13' 5"
DINING	14' 2" X 9' 0"
MASTER BD	9' 10" X 12' 0"
BEDROOM 2	10' 4" X 9' 11"
BEDROOM 3	11' 1" X 10' 9"
TERRACE	9' 1" X 9' 1"



All dimensions and specifications are approximate. Certain plans are reverse or mirror image. Balcony square footages are estimated and may vary from that stated. Please see Sales Representative for details. Furniture not included. Refer to key plan for unit location and orientation. E. & O.E.

KING

HOME 1501 S



3BD.41

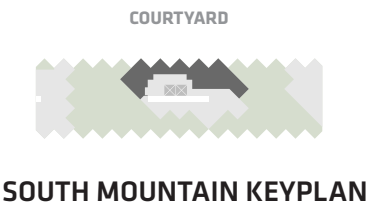
3 Bedroom + Family + Study
2 Bathroom

Total Living:
2476 ft²

Interior Living:
1999 ft²

Exterior Living:
477 ft²

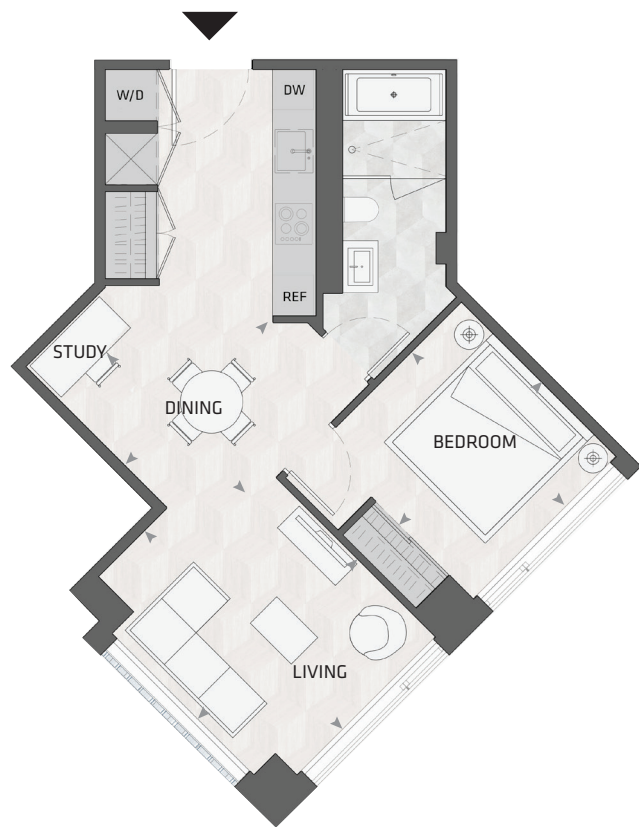
LIVING/ DINING	11' 5" X 23' 7"
FAMILY RM	12' 0" X 12' 0"
MASTER BD	13' 7" X 11' 2"
BEDROOM 2	10' 10" X 9' 10"
BEDROOM 3	9' X 9' 10' 0"
STUDY	10' 9" X 10' 0"
TERRACE A	9' 1" X 6' 8"
TERRACE B	8' 3" X 6' 8"
TERRACE C	2' 8" X 8' 3"



All dimensions and specifications are approximate. Certain plans are reverse or mirror image. Balcony square footages are estimated and may vary from that stated. Please see Sales Representative for details. Furniture not included. Refer to key plan for unit location and orientation. E. & O.E.

KING

HOME 718 E



1BD.21

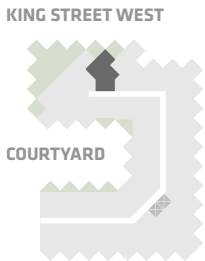
1 Bedroom + Study
1 Bathroom

Total Living:
642 ft²

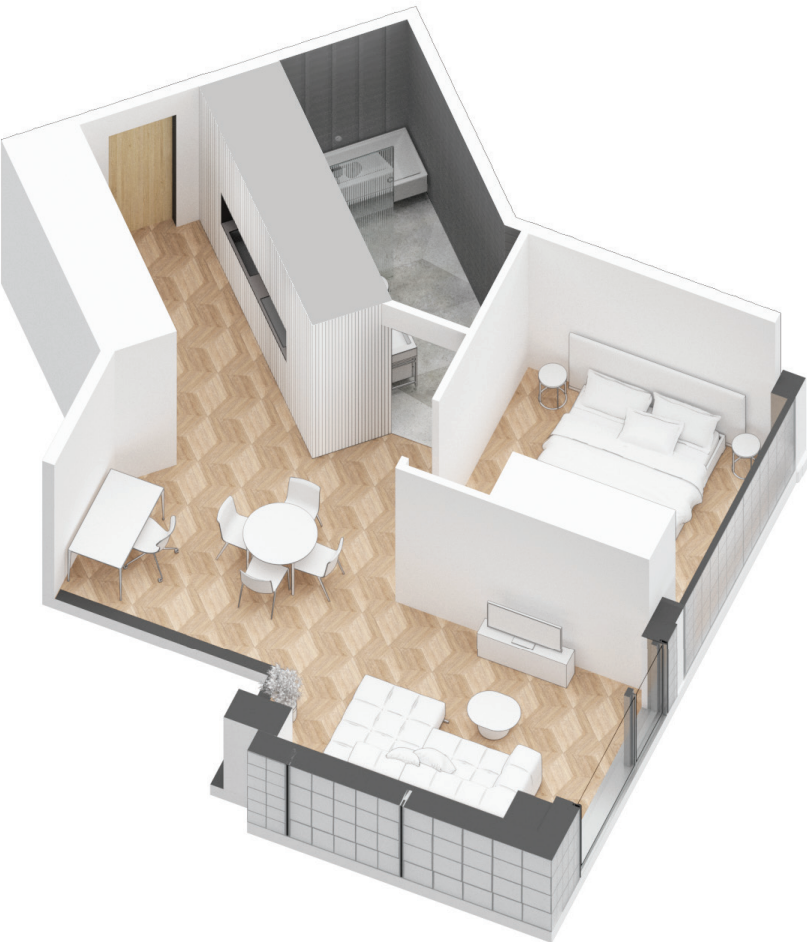
Interior Living:
642 ft²

Exterior Living:
N/A

LIVING	10' 11" x 13' 6"
DINING	9' 11" x 12' 3"
BEDROOM	9' 9" x 10' 6"



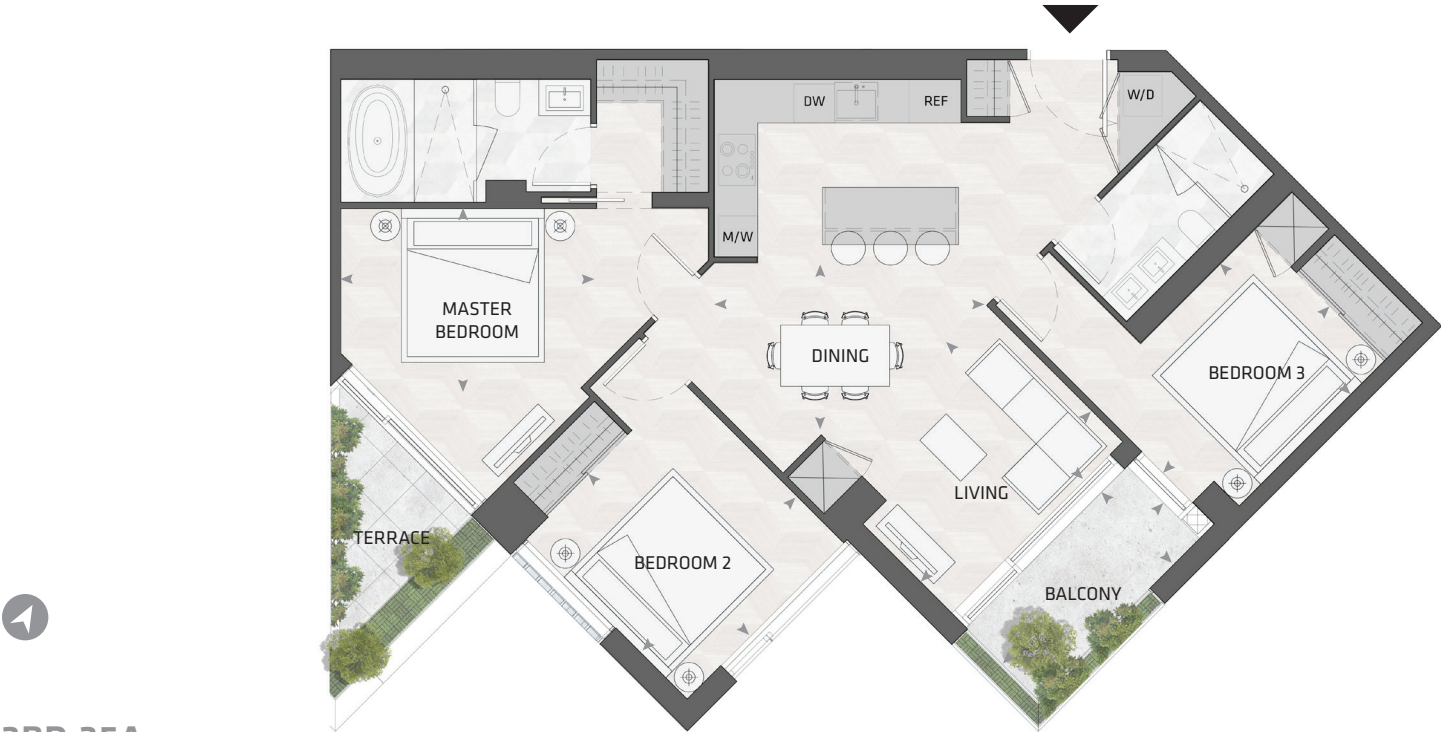
EAST MOUNTAIN KEYPLAN



All dimensions and specifications are approximate. Certain plans are reverse or mirror image. Balcony square footages are estimated and may vary from that stated. Please see Sales Representative for details. Furniture not included. Refer to key plan for unit location and orientation. E. & O.E.

KING

HOME 803 E



3BD.35A

3 Bedroom
2 Bathroom

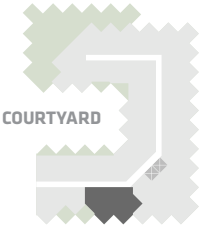
Total Living:
1245 ft²

Interior Living:
1173 ft²

Exterior Living:
72 ft²

LIVING	11' 8" x 9' 3"
DINING	13' 1" x 8' 2"
MASTER BD	12' 4" x 8' 8"
BEDROOM 2	10' 8" x 11' 0"
BEDROOM 3	11' 4" x 8' 10"
BALCONY	11' 0" x 4' 11"

KING STREET WEST



EAST MOUNTAIN KEYPLAN



All dimensions and specifications are approximate. Certain plans are reverse or mirror image. Balcony square footages are estimated and may vary from that stated. Please see Sales Representative for details. Furniture not included. Refer to key plan for unit location and orientation. E. & O.E.

KING

HOME 919 E



2BD.57

2 Bedroom + Atelier
2 Bathroom

Total Living:
980 ft²

Interior Living:
908 ft²

Exterior Living:
72 ft²

LIVING	12' 0" X 11' 10"
DINING	8' 5" X 7' 10"
MASTER BD	11' 10" X 10' 2"
BEDROOM 2	9' 10" 10' 10"
ATELIER	5' 4" X 4' 6"
BALCONY	4' 11" X 11' 0"



EAST MOUNTAIN KEYPLAN



All dimensions and specifications are approximate. Certain plans are reverse or mirror image.
Balcony square footages are estimated and may vary from that stated. Please see Sales Representative
for details. Furniture not included. Refer to key plan for unit location and orientation. E. & O.E.

KING

HOME 1102 E



2BD.04

2 Bedroom
2 Bathroom

Total Living:
965 ft²

Interior Living:
898 ft²

Exterior Living:
67 ft²

LIVING	9' 9" X 8' 11"
DINING	7' 2" X 14' 4"
MASTER BD	9' 10" X 11' 2"
BEDROOM 2	9' 3" X 10' 3"
BALCONY	9' 9" X 4' 11"



EAST MOUNTAIN KEYPLAN



All dimensions and specifications are approximate. Certain plans are reverse or mirror image. Balcony square footages are estimated and may vary from that stated. Please see Sales Representative for details. Furniture not included. Refer to key plan for unit location and orientation. E. & O.E.