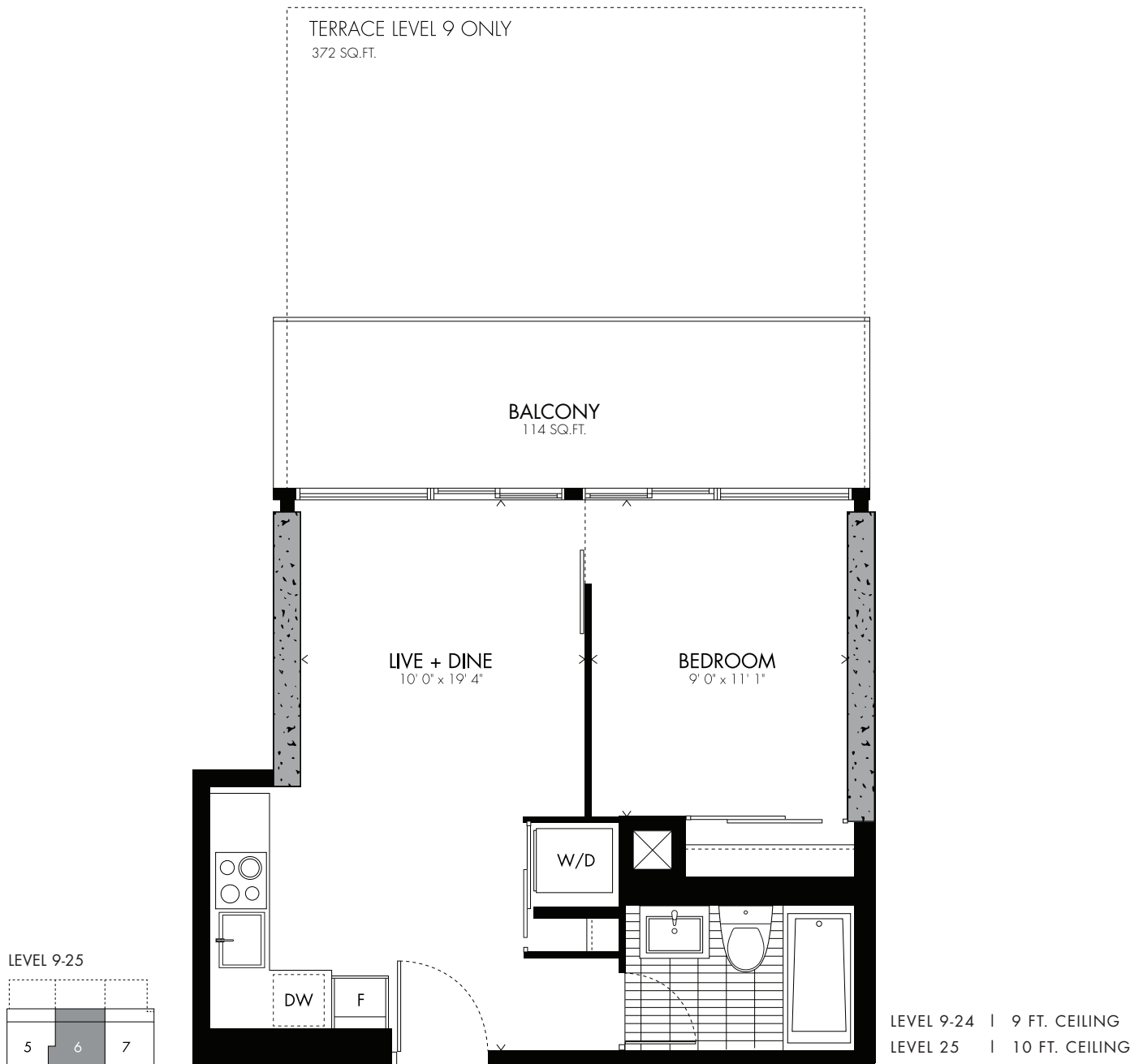


# Mies Van Der Rohe <sup>06</sup>

## one bedroom

457 sq.ft.



All prices, sizes and specifications are subject to change without notice. E&OE.

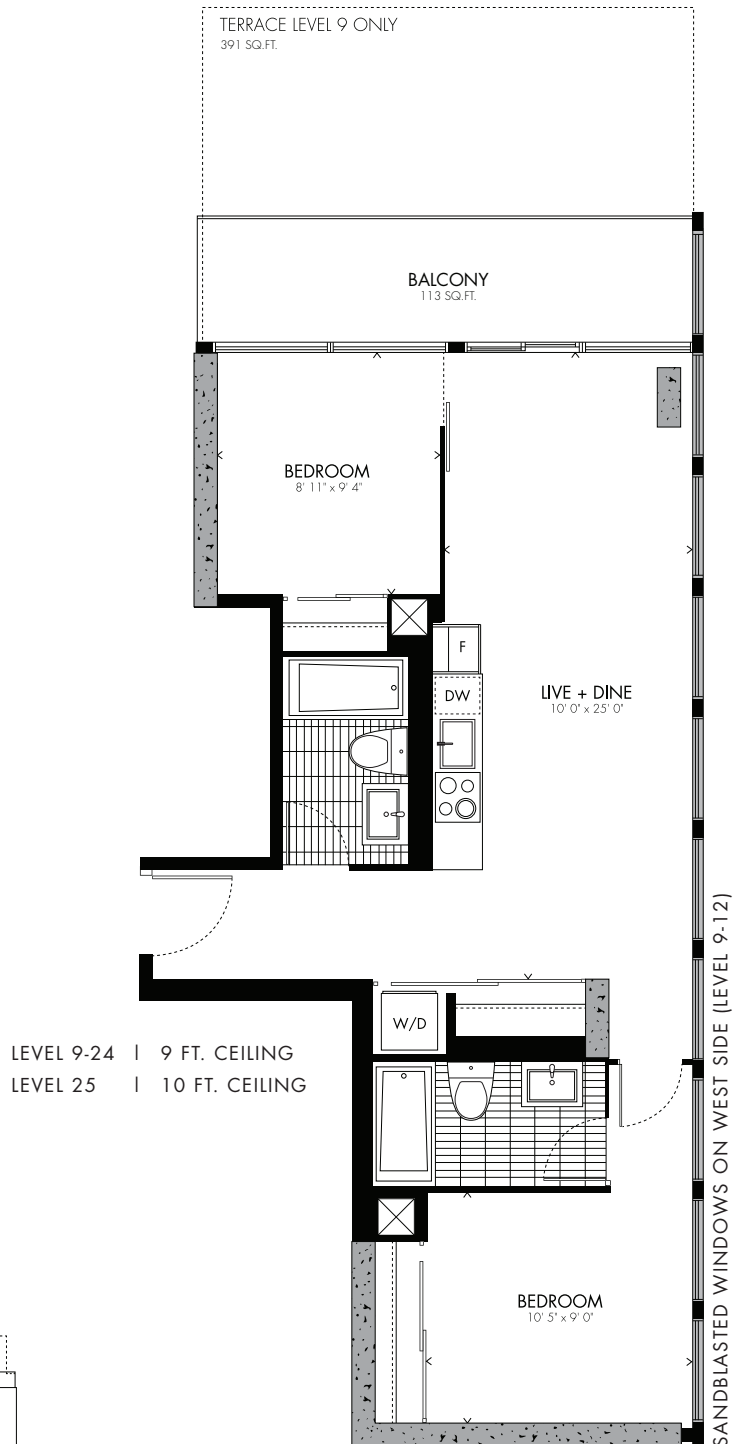


Ludwig Mies van der Rohe, commonly referred to as Mies, was the last director of the Bauhaus in Germany before emigrating to the USA to be the head of architecture at the Illinois Institute of Technology. He is considered one of the pioneers and masters of modernist architecture. Called his buildings "skin and bone" architecture focusing on modern materials and functionality.

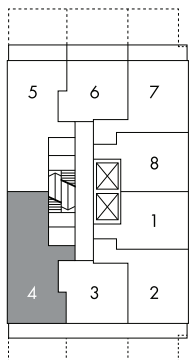
BAUHAUS

# Albers <sup>04</sup> two bedroom

777 sq.ft.



LEVEL 9-25



All prices, sizes and specifications are subject to change without notice. E&O.E.



German designer and textile artist Anni Albers was the wife of Josef Albers and an influential artist in her own right. Her work reflects the Bauhaus design ethos, where she studied before moving to the United States.

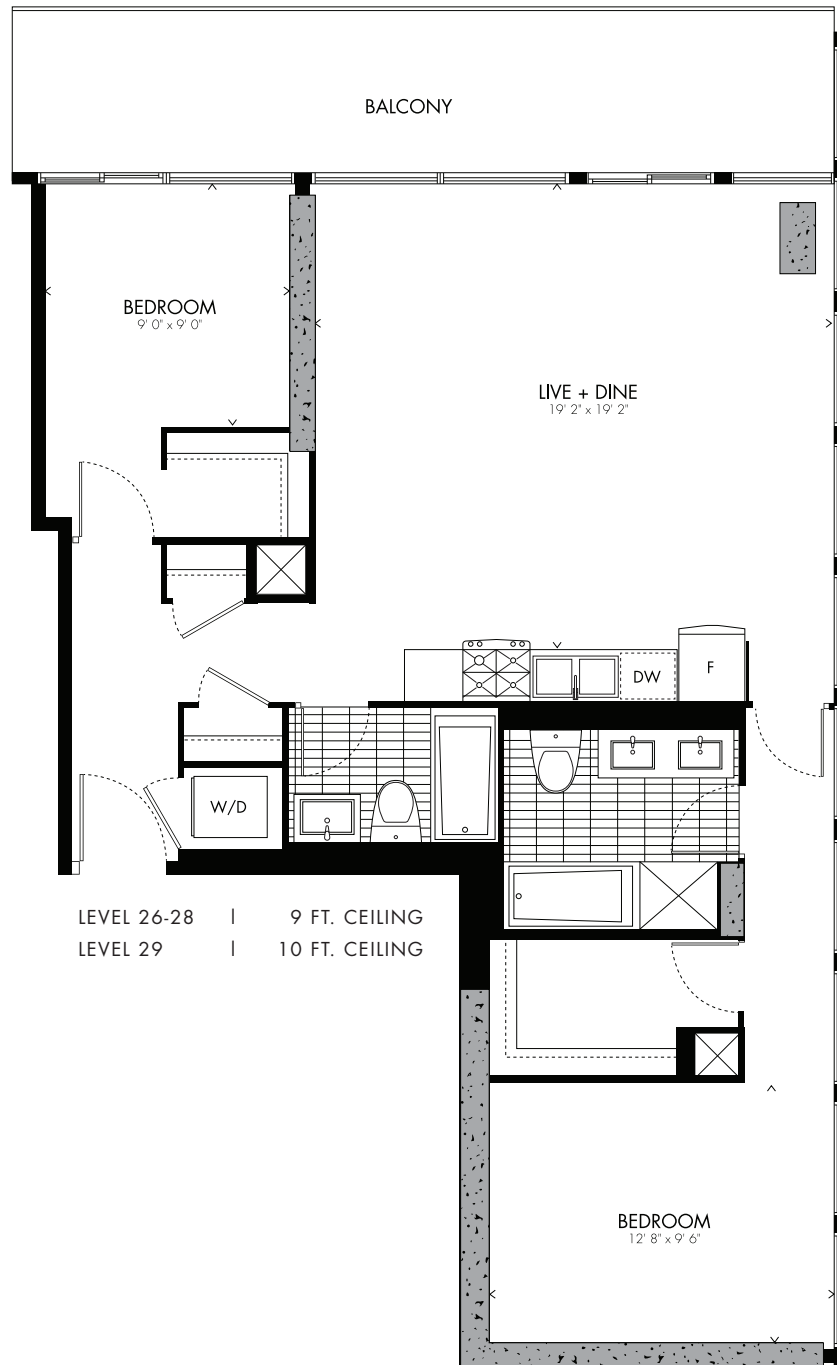
BAUHAUS

# Behrens **PENTHOUSE** two bedroom

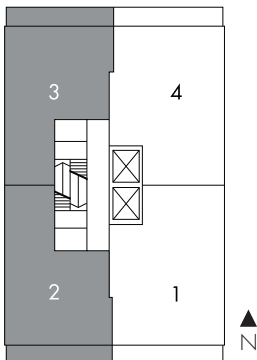
UNIT 02 - 1,050 SQ.FT.

UNIT 03 - 1,070 SQ.FT.

1,050 sq.ft.



LEVEL 26-29



All prices, sizes and specifications are subject to change without notice. E.A.O.E.

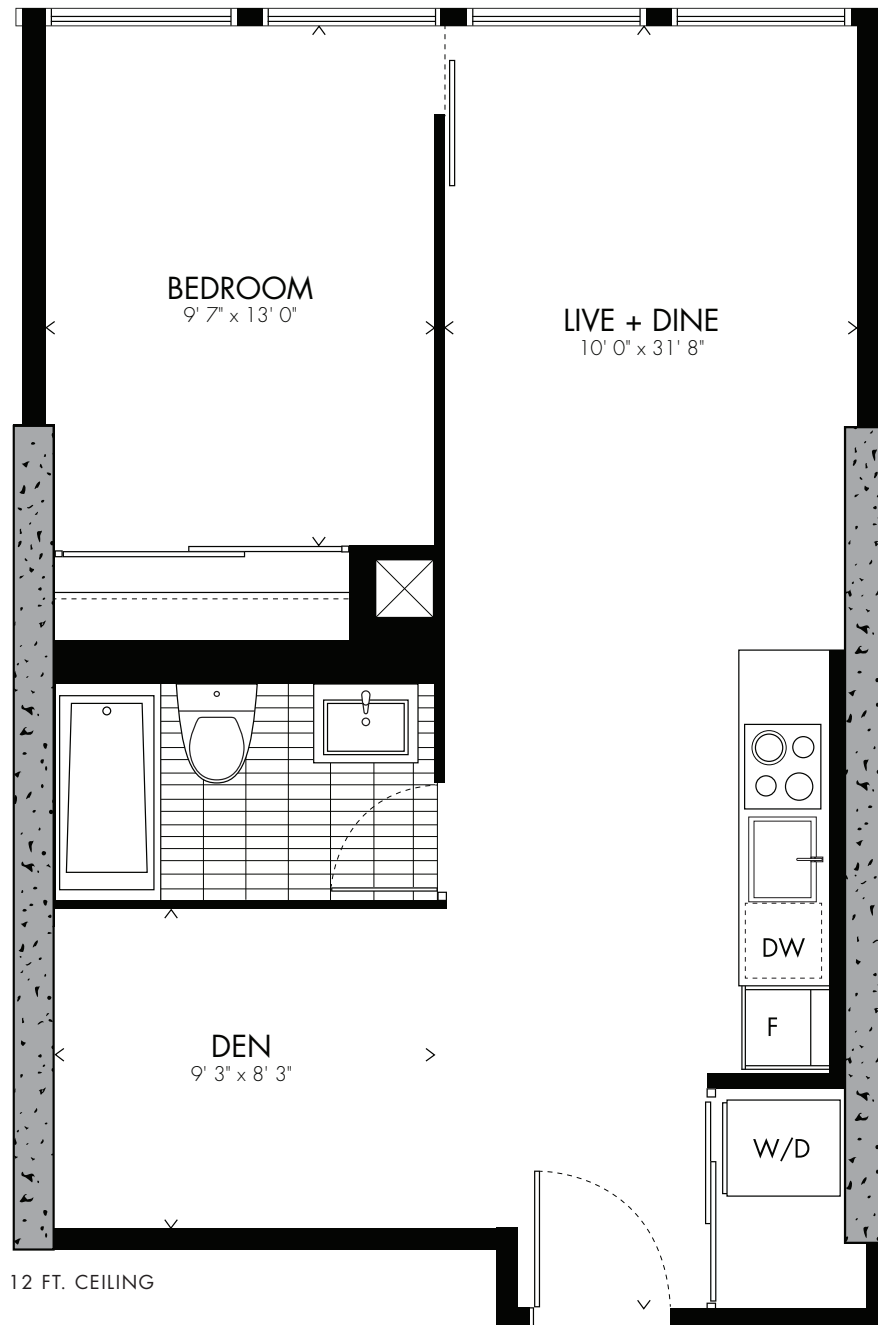


Peter Behrens was a German architect and designer. He was important for the modernist movement, and several of the movement's leading names (including Ludwig Mies van der Rohe, Le Corbusier and Walter Gropius) worked for him in earlier stages of their careers.

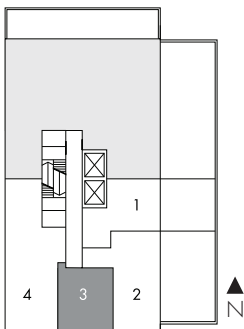
**BAUHAUS**

# Bill <sup>03</sup> one bedroom + den

658 sq.ft.



LEVEL 2

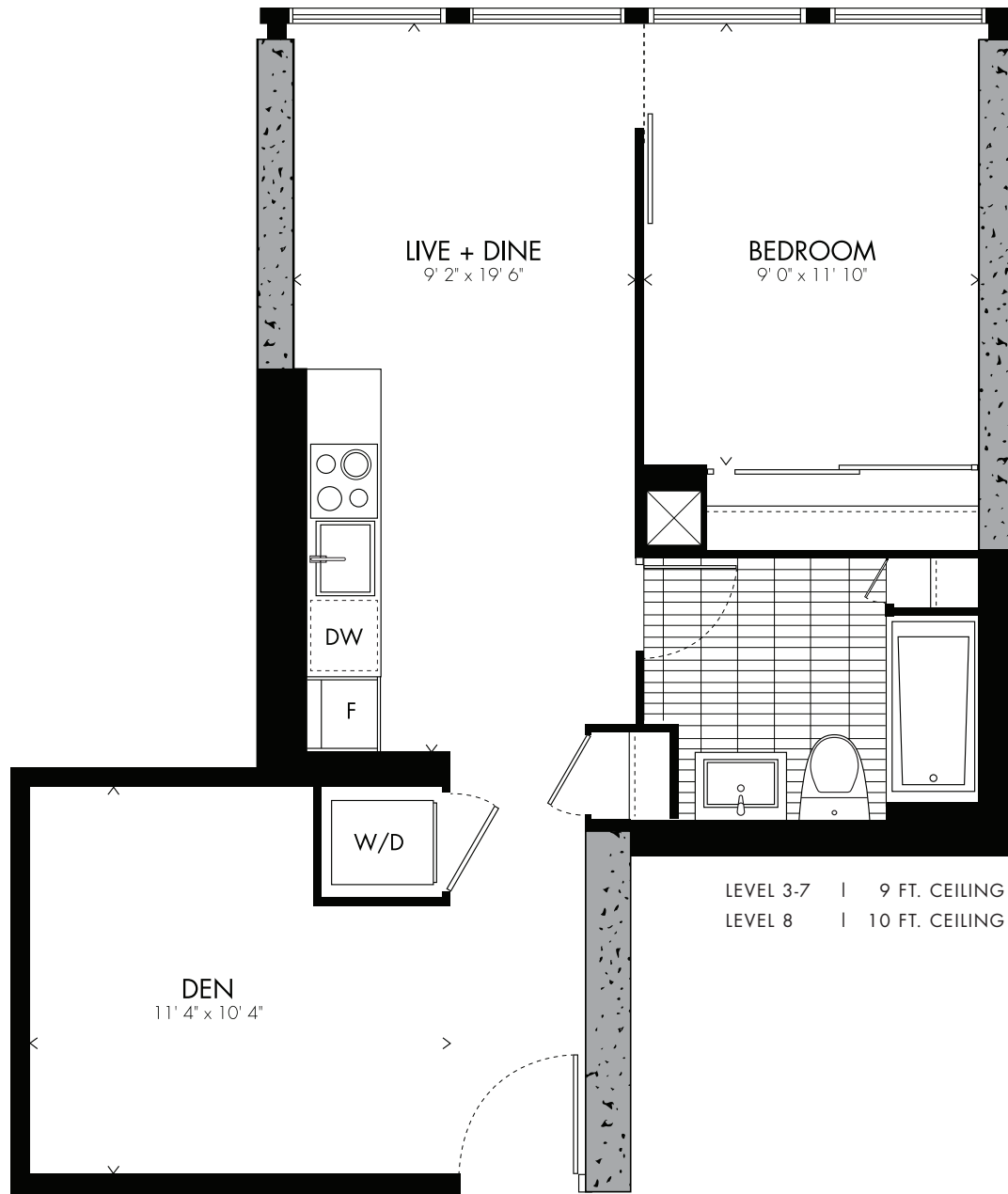


Max Bill was a Swiss architect, artist, painter, typeface designer, industrial designer and graphic designer. He studied at the Bauhaus in Dessau under Wassily Kandinsky, Paul Klee, and Oskar Schlemmer. He was the founder of the Concrete Art movement and is known for his interpretations of constructivism through structured paintings and spherical sculptures, including geometry and mathematics into his art.

BAUHAUS

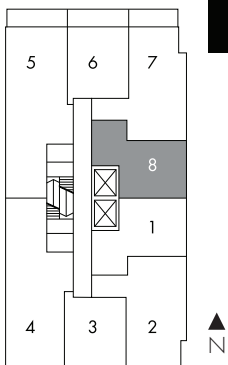
# Breuer <sup>08</sup> one bedroom + den

628 sq.ft.

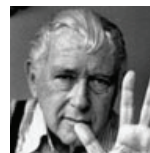


LEVEL 3-7 | 9 FT. CEILING  
LEVEL 8 | 10 FT. CEILING

LEVEL 3-8



All prices, sizes and specifications are subject to change without notice. E.O.D.E.



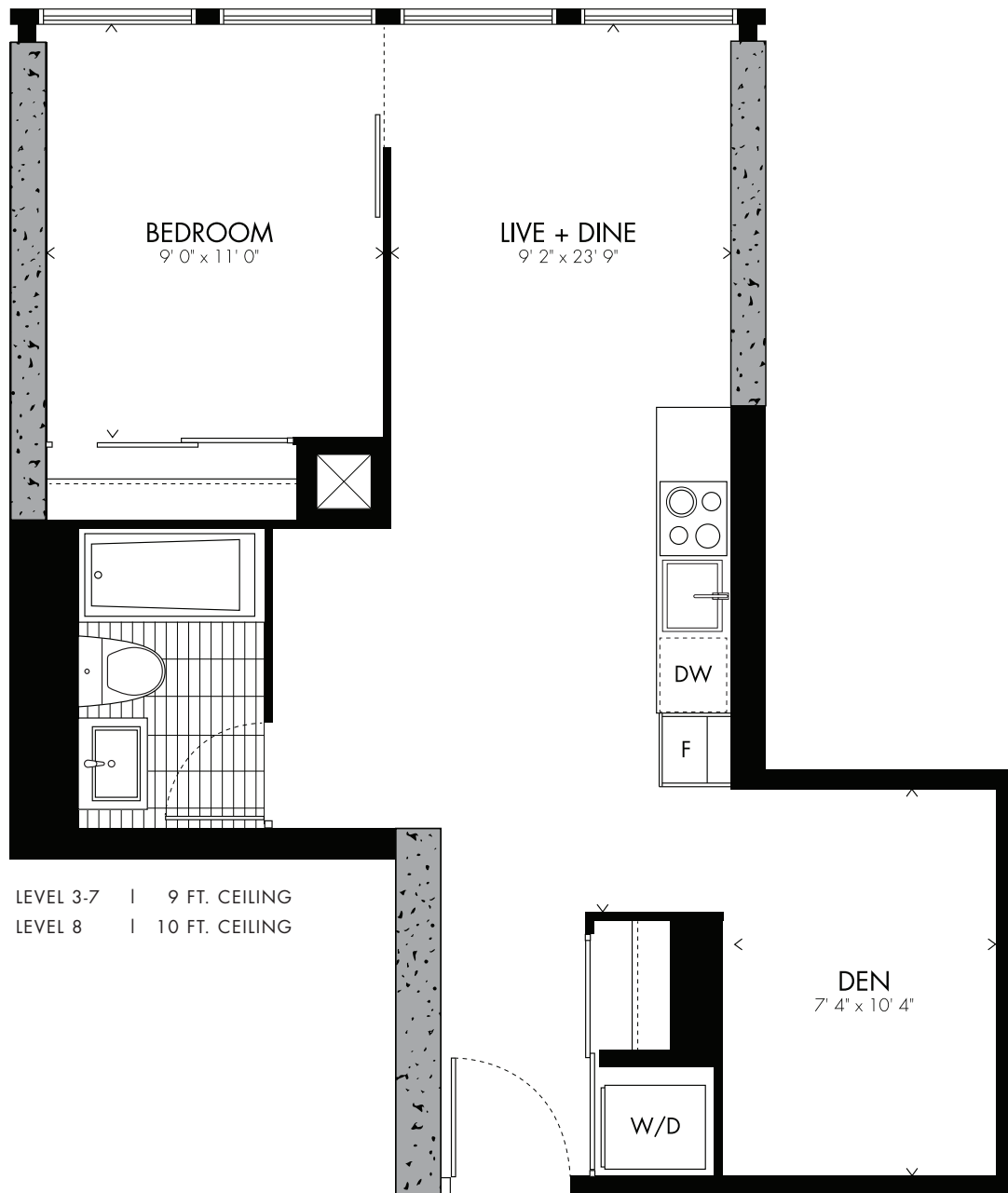
Marcel Breuer's career touched nearly every aspect of three-dimensional design, from tiny utensils to the biggest buildings. Famously part of the Bauhaus school in Germany, Breuer was an influential Hungarian-born modernist that went on to teach many architects of the next generation.

BAUHAUS

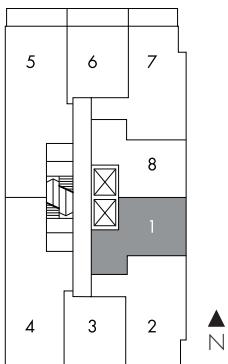
# Feininger<sup>01</sup>

## one bedroom + den

629<sup>sq.ft.</sup>



LEVEL 3-8



All prices, sizes and specifications are subject to change without notice. E.A.O.E.

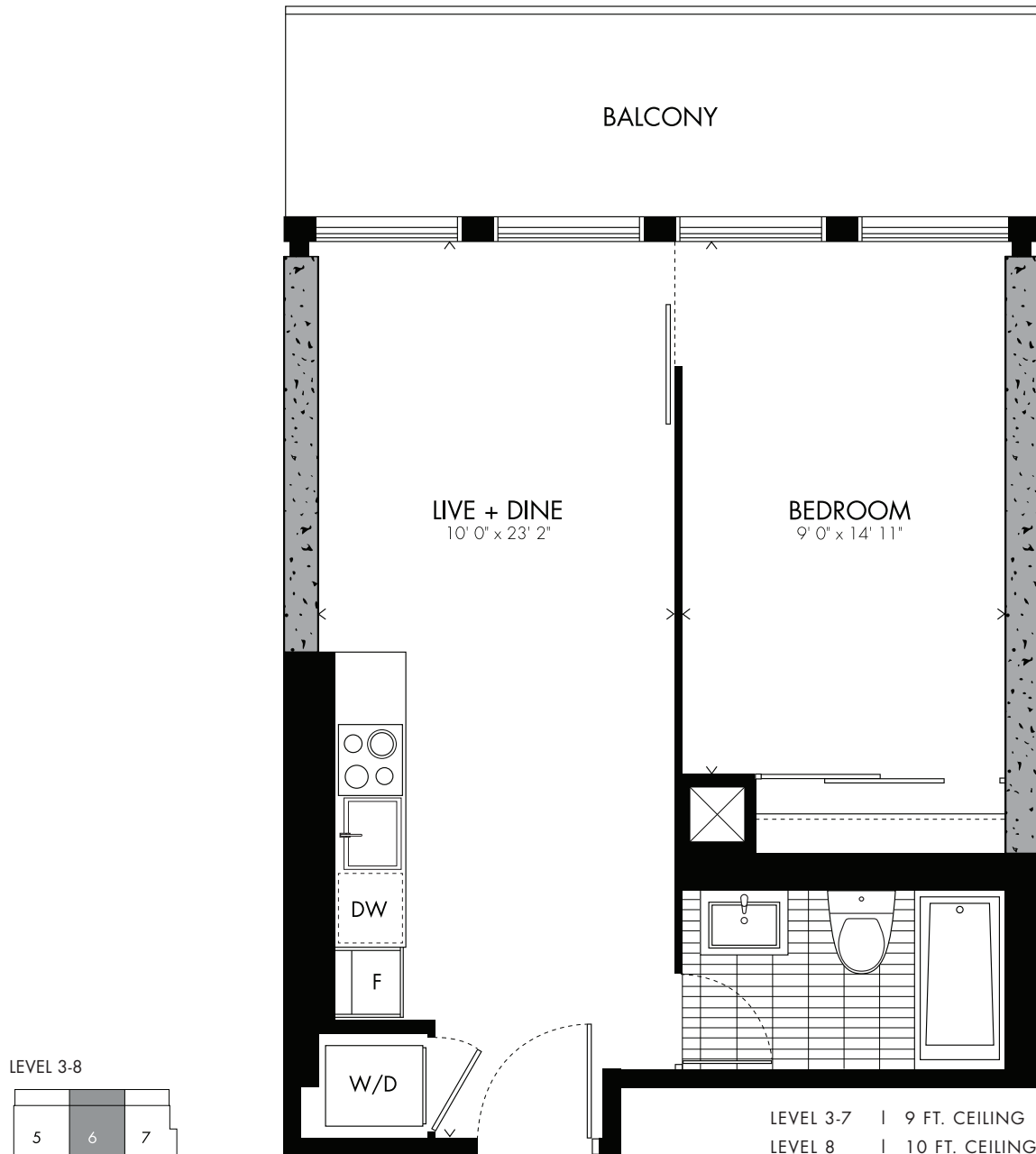


Lyonel Feininger was a German-American painter and caricaturist. Feininger was associated Die Brücke and Blue Rider. He designed the cover for the Bauhaus 1919 manifesto. Feininger was one of the very few fine artists also to draw comic strips as a cartoonist.

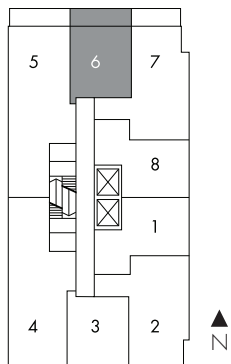
BAUHAUS

# Gropius<sup>06</sup> one bedroom

522<sup>sq.ft.</sup>



All prices, sizes and specifications are subject to change without notice. E.A.O.E.

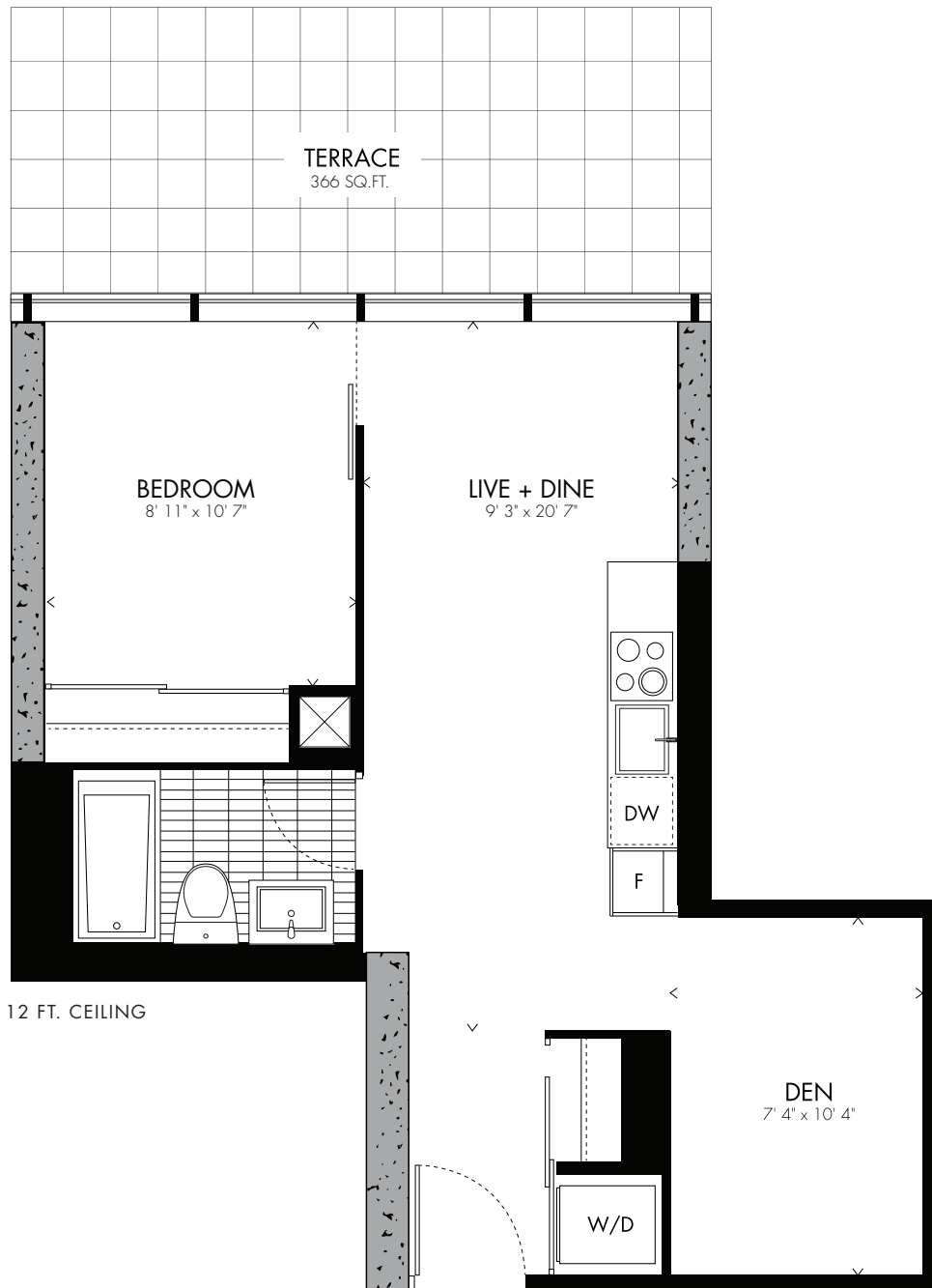


The German architect Walter Gropius founded the Bauhaus school of art and design in Weimar Germany. Along with Ludwig Mies van der Rohe and Le Corbusier, he is regarded as one of the pioneers of modern architecture.

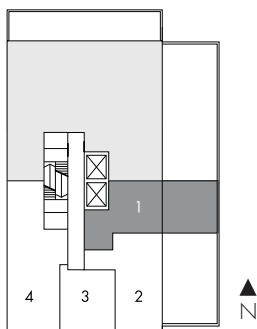
BAUHAUS

# Henri <sup>01</sup> one bedroom + den

583 sq.ft.



LEVEL 2



All prices, sizes and specifications are subject to change without notice. E&O.E.



Not until she came to the Bauhaus did Florence Henri come in contact with photography. The painter entered uncharted territory by earning a living with a photo studio of her own after she returned to Paris. In her photos, Henri expanded perspectives through reflections, overlapping and penetrations.

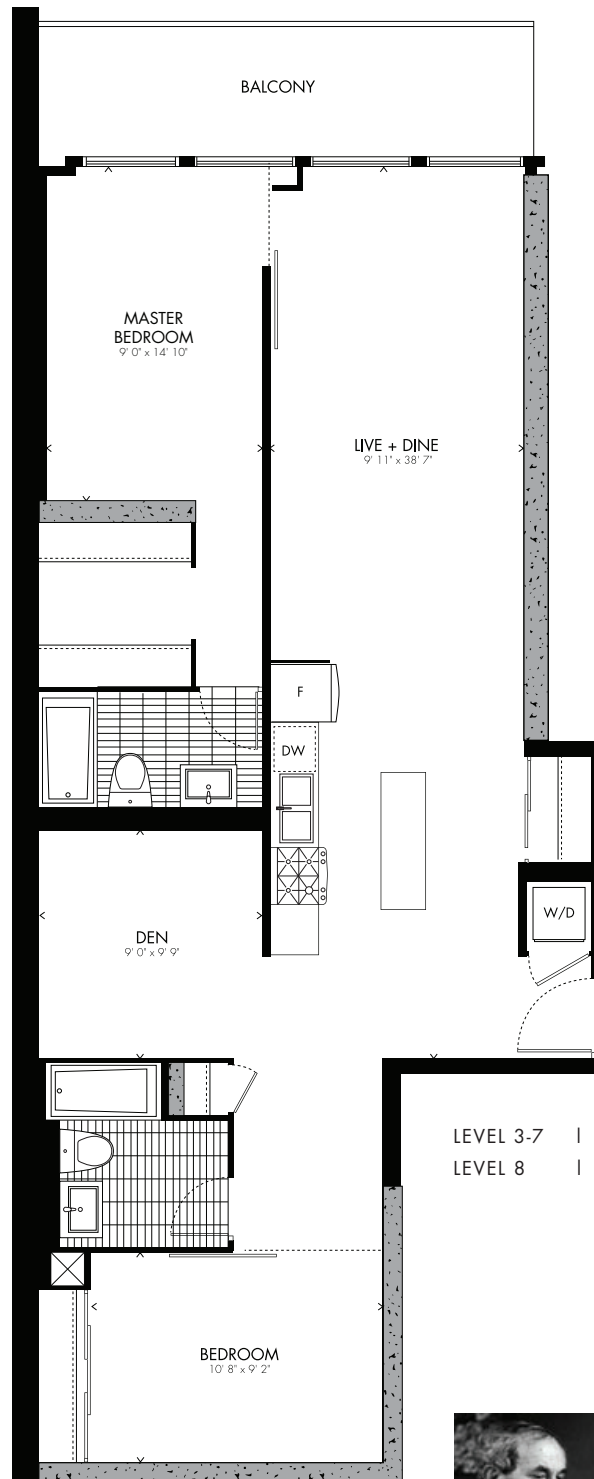
BAUHAUS



# Itten<sup>05</sup>

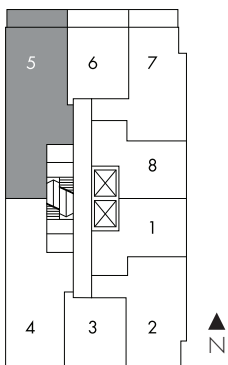
## two bedroom + den

1,190 sq.ft.



LEVEL 3-7 | 9 FT. CEILING  
LEVEL 8 | 10 FT. CEILING

LEVEL 3-8



All prices, sizes and specifications are subject to change without notice. E&O.E.

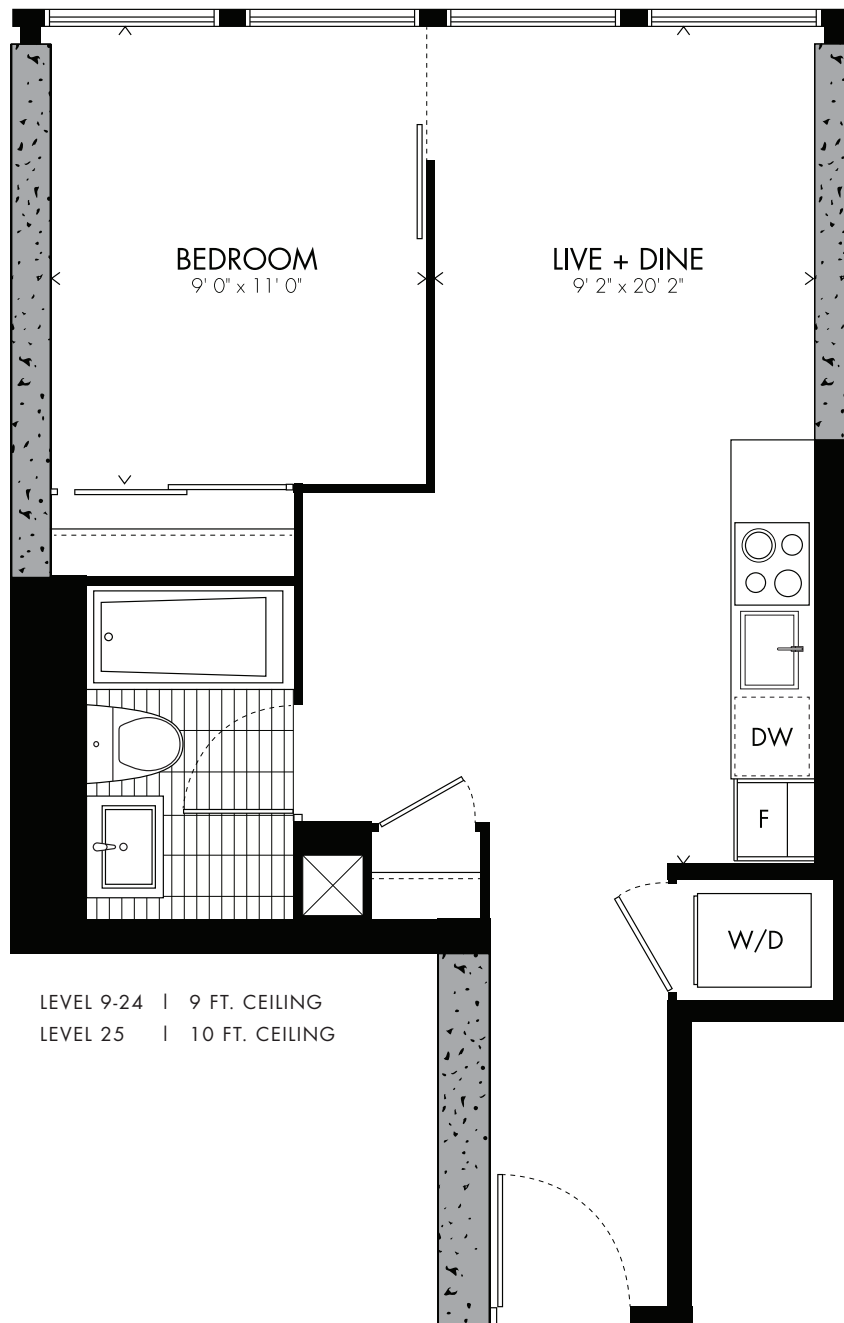


Swiss expressionist painter and color theorist Johannes Itten was an influential teacher at the Bauhaus. He wrote influential books and his biggest legacy is in the students that he influenced.

BAUHAUS

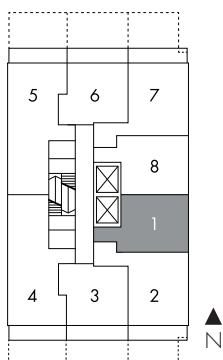
# Kandinsky<sup>01</sup> one bedroom

521 sq.ft.



LEVEL 9-24 | 9 FT. CEILING  
LEVEL 25 | 10 FT. CEILING

LEVEL 9-25



All prices, sizes and specifications are subject to change without notice. E.O.E.

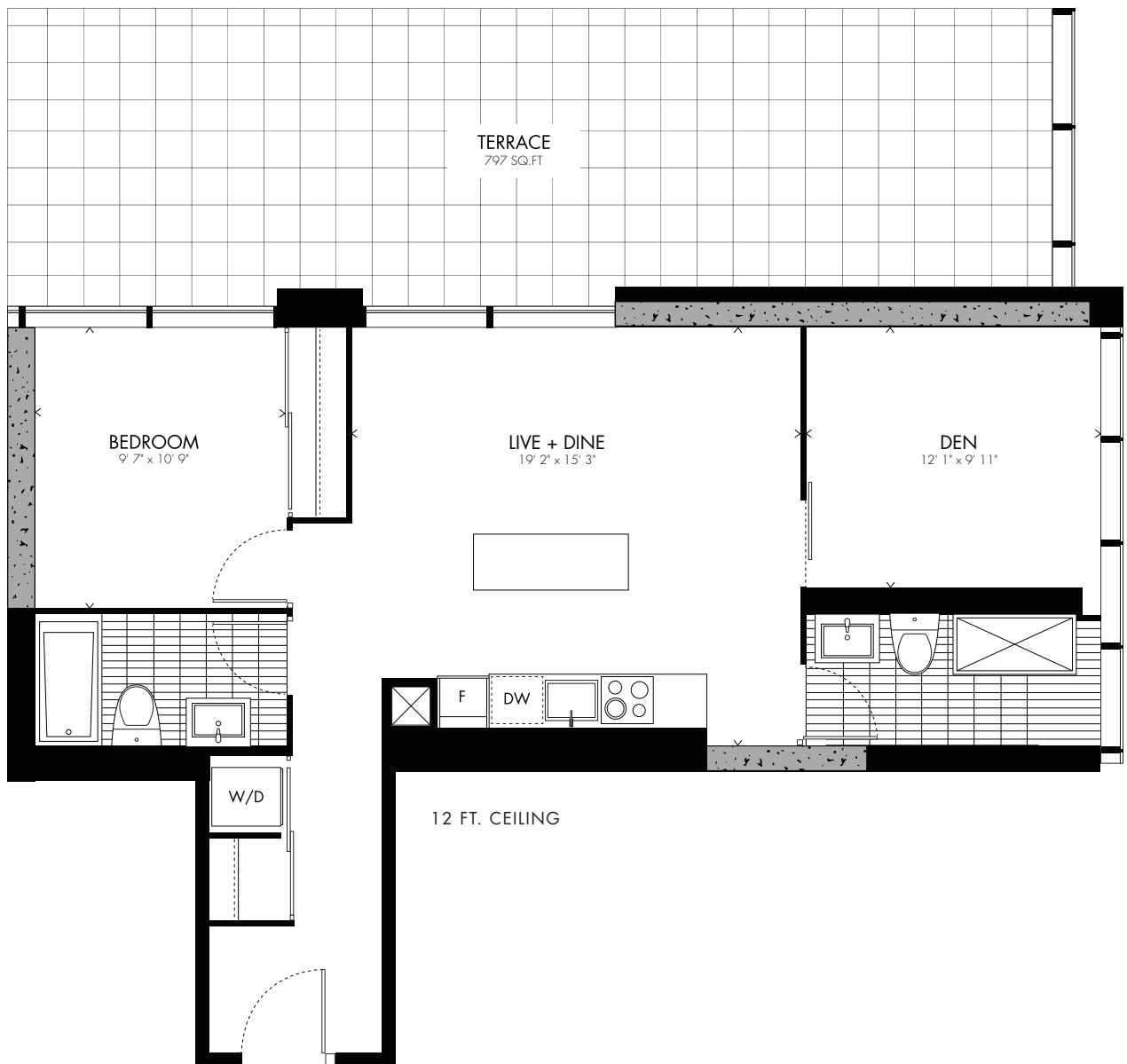


A member of the German Expressionist group Der Blaue Reiter, and later a teacher at the Bauhaus, Kandinsky is best known for his pioneering breakthrough into expressive abstraction in 1913. His work prefigures that of the American Abstract Expressionists.

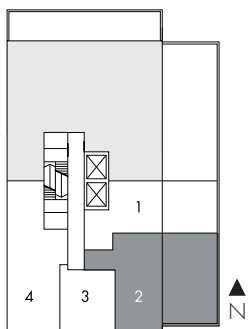
BAUHAUS

# Kepes <sup>02</sup> one bedroom + den

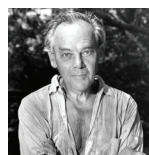
896 sq.ft.



LEVEL 2



All prices, sizes and specifications are subject to change without notice. E.O.E.



György Kepes was a Hungarian-born painter, photographer, designer, educator, and art theorist. After emigrating to the U.S. in 1937, he taught design at the New Bauhaus in Chicago. In 1967 He founded the Center for Advanced Visual Studies at the Massachusetts Institute of Technology (MIT) where he taught until his retirement in 1974.

BAUHAUS

# Klee <sup>03</sup> one bedroom

459 sq.ft.

TERRACE LEVEL 9 ONLY  
391 SQ.FT.

BALCONY  
114 SQ.FT.

BEDROOM  
9' 0" x 10' 7"

LIVE + DINE  
10' 0" x 20' 2"

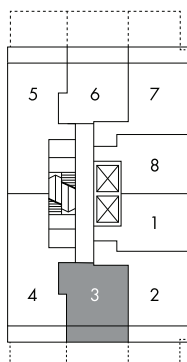
LEVEL 9-24 | 9 FT. CEILING  
LEVEL 25 | 10 FT. CEILING

W/D

DW

F

LEVEL 9-25



All prices, sizes and specifications are subject to change without notice. E&OE.

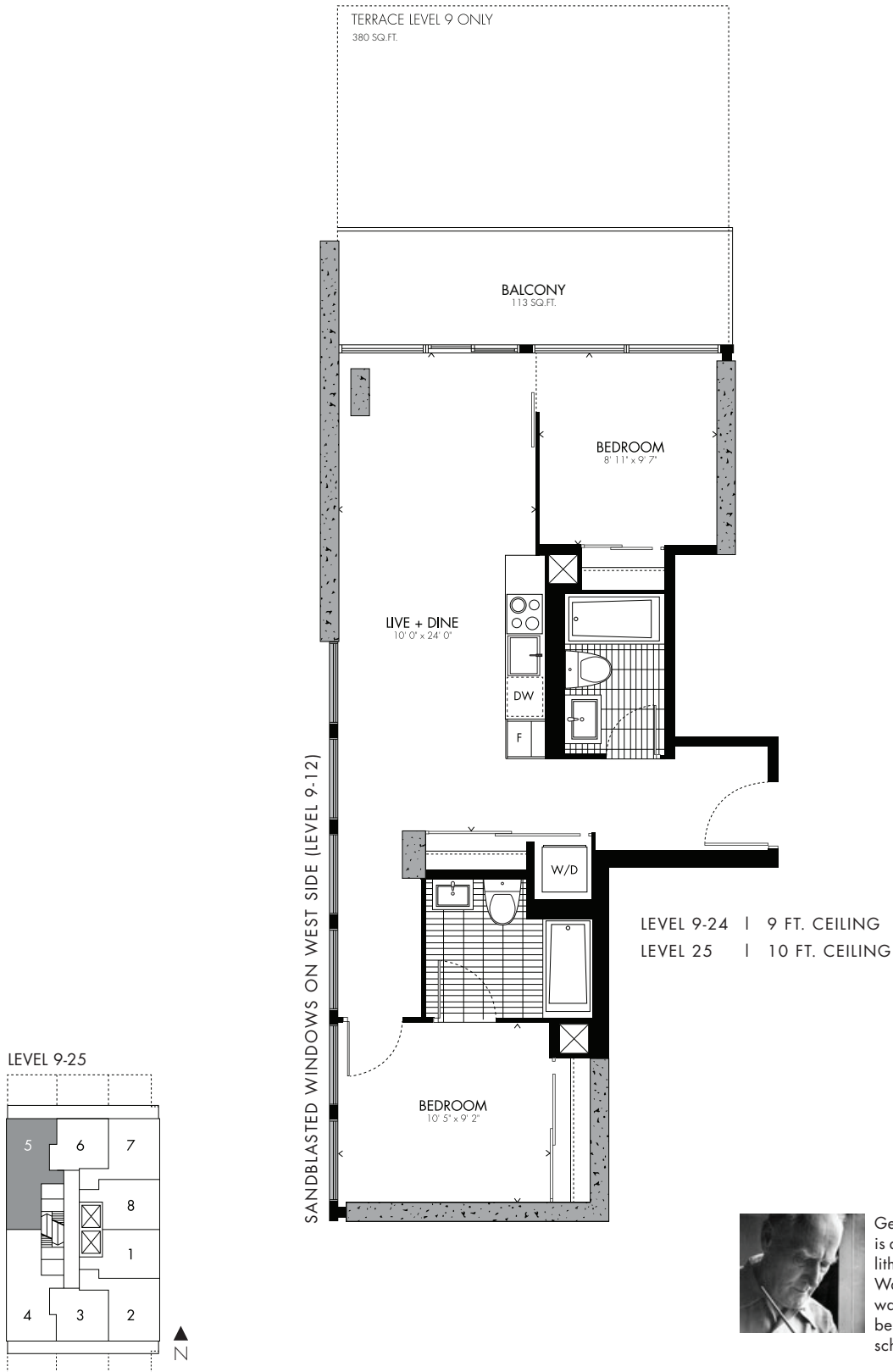


The Swiss-born painter Paul Klee worked in a variety of styles, including Expressionism, geometric abstraction, and collage. His most famous works have a mystical quality and make use of linear and pictorial symbols.

BAUHAUS

# Marcks<sup>05</sup> two bedroom

806 sq.ft.



All prices, sizes and specifications are subject to change without notice. E.A.O.E.

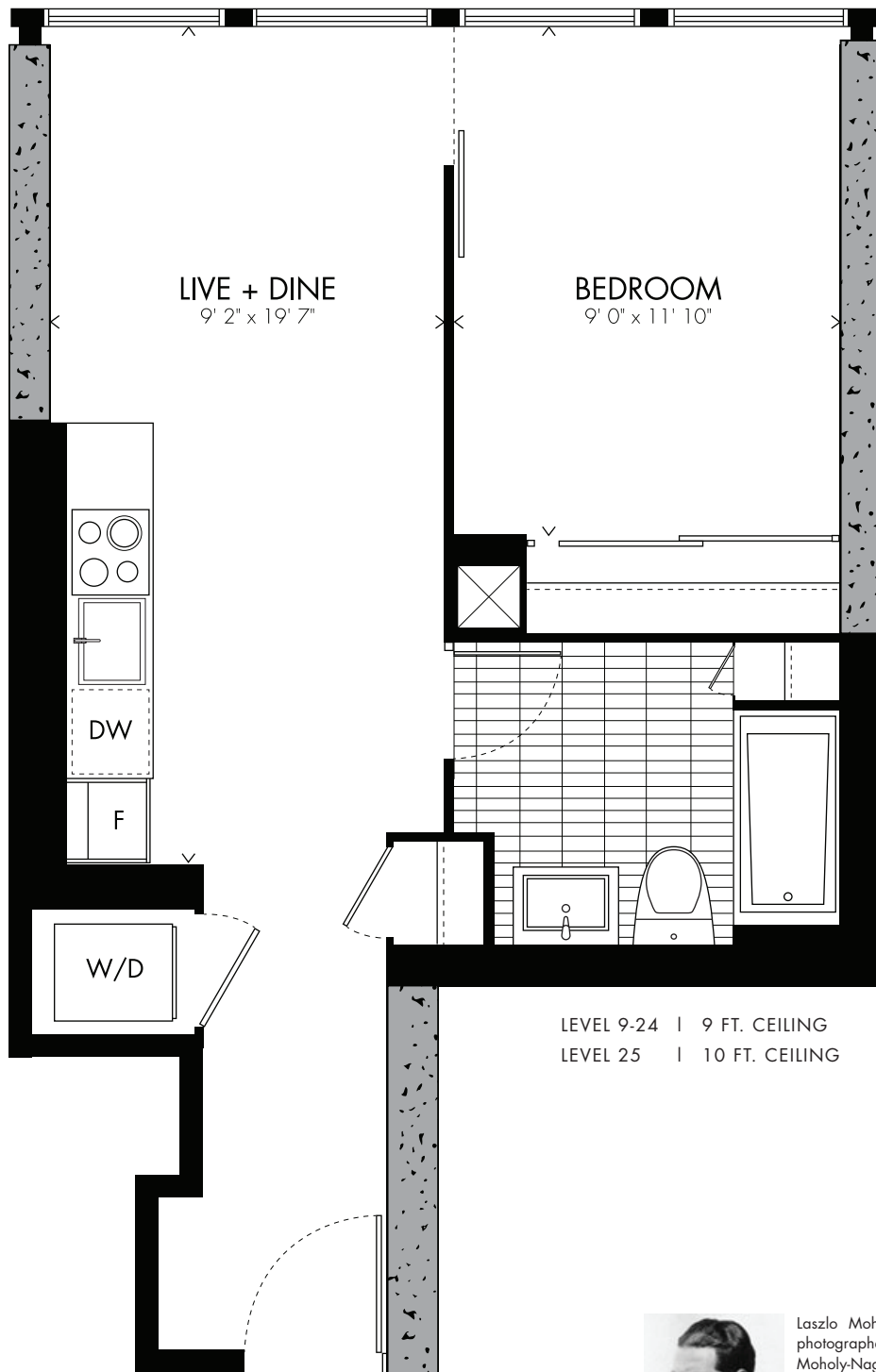


Gerhard Marcks was a German sculptor, who is also well-known for his drawings, woodcuts, lithographs and ceramics. In 1919, when Walter Gropius founded the Bauhaus, Marcks was one of the first three faculty members to be hired. He served as Form Master of the school's Pottery Workshop.

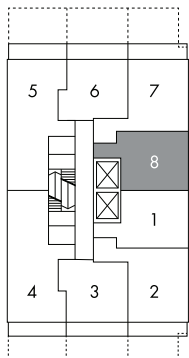
**BAUHAUS**

# Moholy-Nagy <sup>08</sup> one bedroom

525 sq.ft.



LEVEL 9-25



All prices, sizes and specifications are subject to change without notice. E.A.O.E.



Laszlo Moholy-Nagy was a Hungarian painter, photographer and teacher at the Bauhaus School. Moholy-Nagy was influential in promoting the Bauhaus's multi- and mixed-media approaches to art, advocating for the integration of technological and industrial design elements.

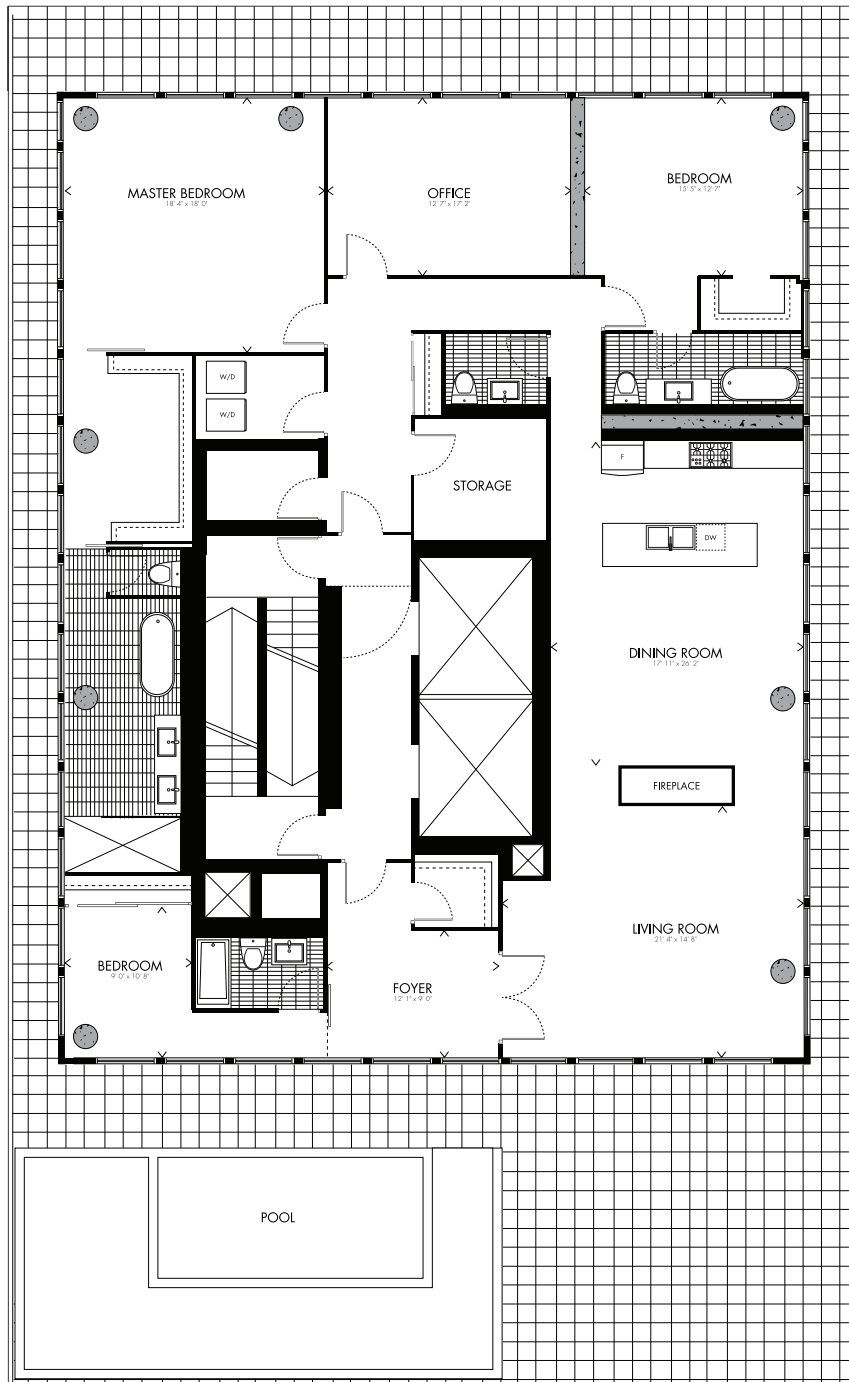
BAUHAUS

# Mondrian

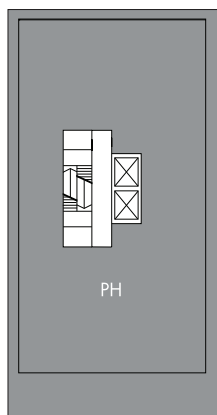
**SKY  
PENTHOUSE**

## three bedroom

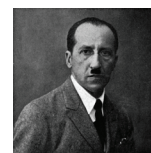
3,414 sq.ft.



LEVEL 30



11 FT. CEILING

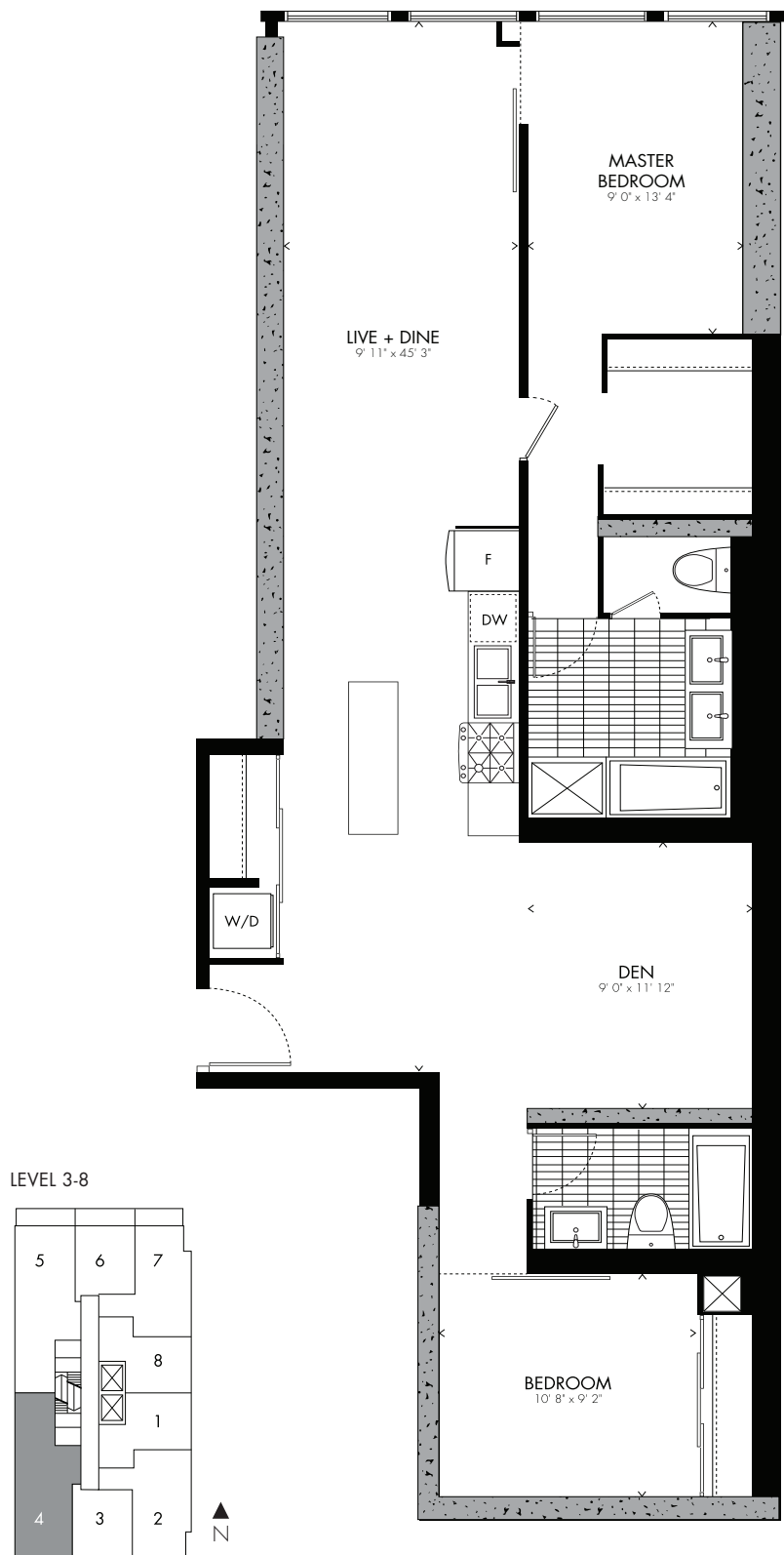


Piet Mondrian, a founding member of the De Stijl movement, was a modern Dutch artist who used grids, perpendicular lines, and the three primary colors in what he deemed Neo-plasticism.

**BAUHAUS**

# Muche <sup>04</sup> two bedroom + den

1,325 sq.ft.



All prices, sizes and specifications are subject to change without notice. E&O.E.



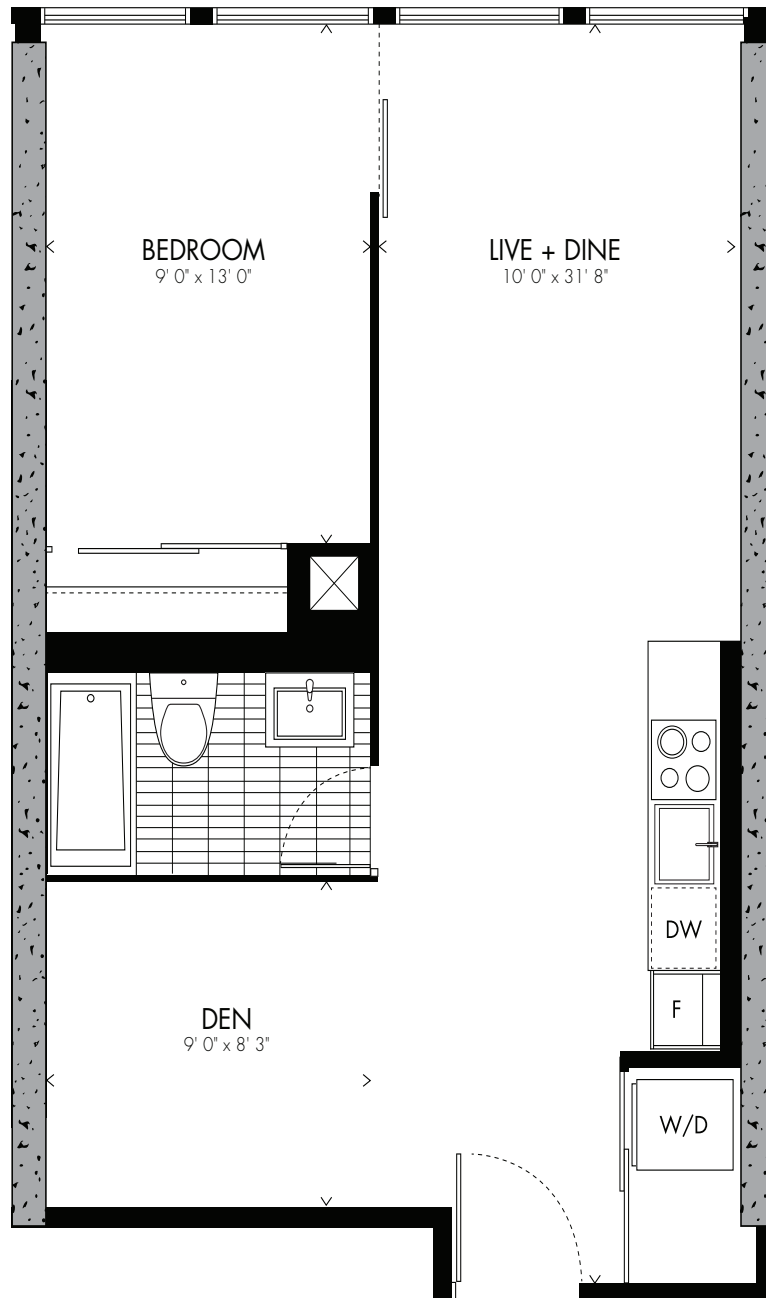
Georg Muche was a German artist and member of the Bauhaus. Georg Muche left the Bauhaus in 1927 to teach at a private art school founded three years previously by Johannes Itten. In 1960 Georg Muche moved to Lindau on Lake Constance, where he worked freelance as a painter and graphic artist.

BAUHAUS



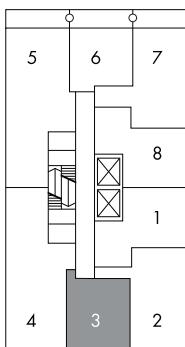
# Schlemmer <sup>03</sup> one bedroom + den

659 sq.ft.



LEVEL 3-7 | 9 FT. CEILING  
LEVEL 8 | 10 FT. CEILING

LEVEL 3-8



All prices, sizes and specifications are subject to change without notice. E.O.E.

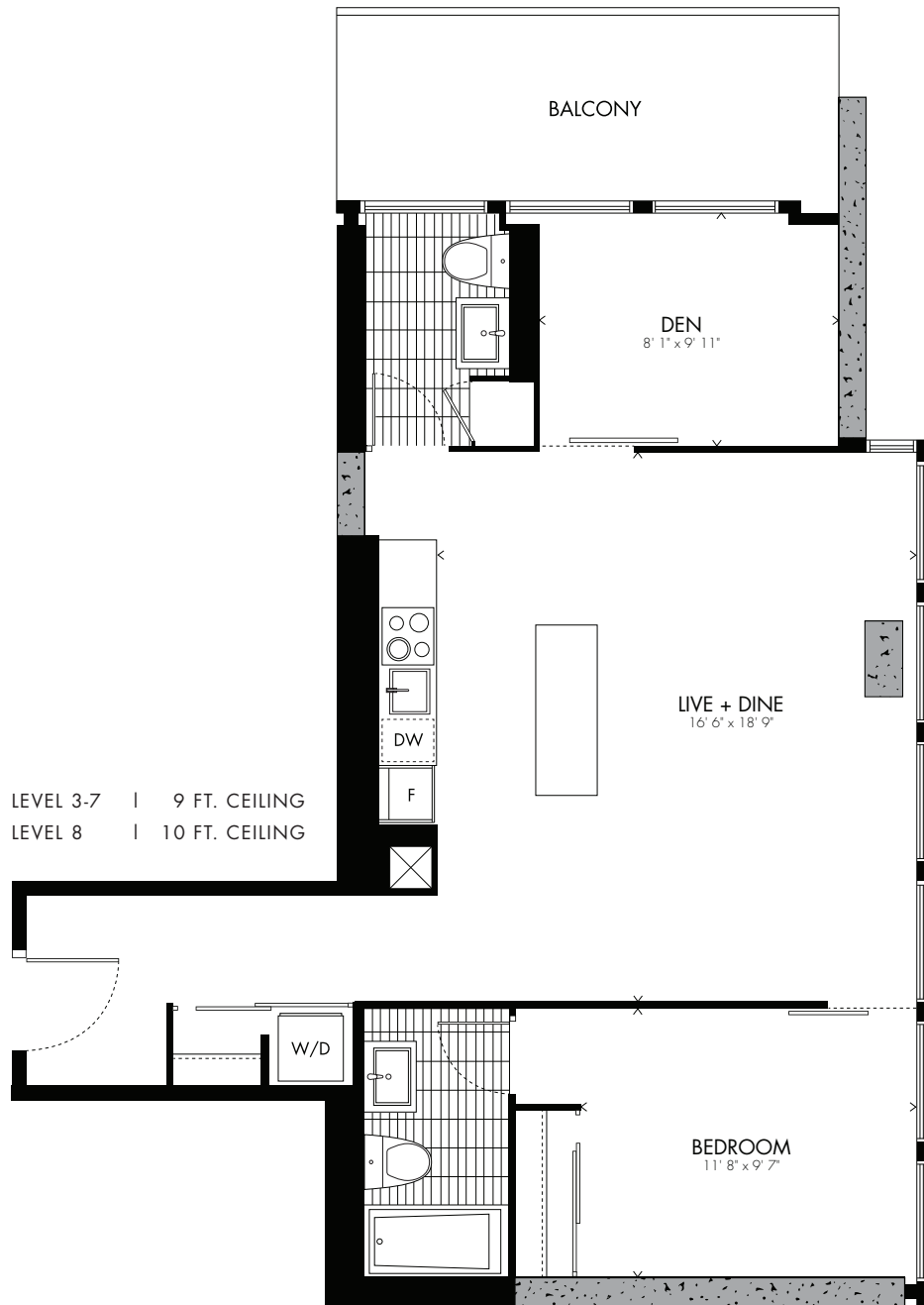


Oskar Schlemmer was a German painter, sculptor, designer and choreographer associated with the Bauhaus school. In 1923 he was hired as Master of Form at the Bauhaus theatre workshop, after working some time at the workshop of sculpture.

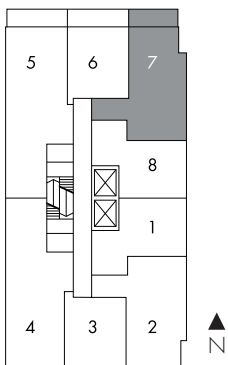
BAUHAUS

# Schmidt <sup>07</sup> one bedroom + den

864<sup>sq.ft.</sup>



LEVEL 3-8



All prices, sizes and specifications are subject to change without notice. E.O.E.



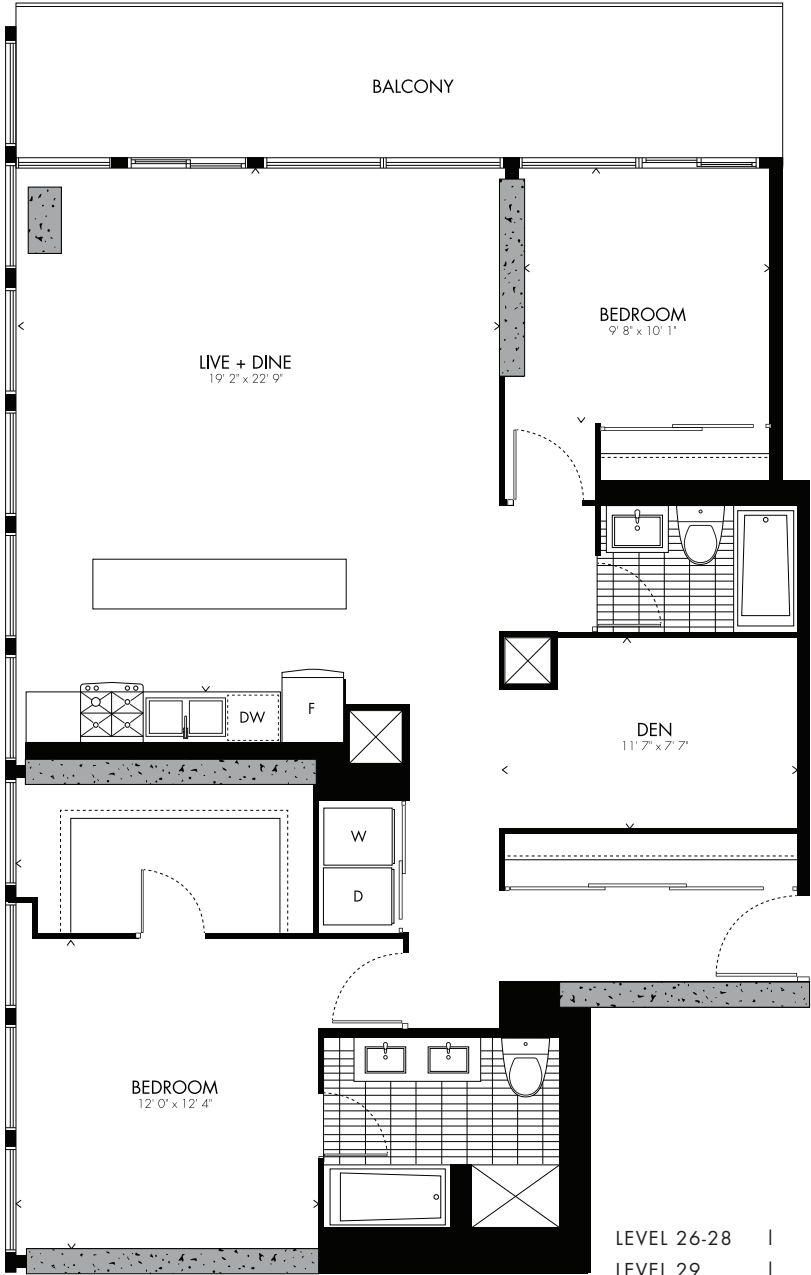
Artist and graphic designer Joost Schmidt was a Bauhaus teacher who is most known for designing the famous poster for the 1923 Bauhaus Exhibition in Weimar, Germany.

BAUHAUS

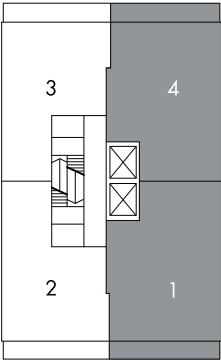
# Schwinsky **PENTHOUSE** 01 | 04

## two bedroom + den

1,323sq.ft.



LEVEL 26-29



All prices, sizes and specifications are subject to change without notice. E.A.O.E.

LEVEL 26-28 | 9 FT. CEILING  
LEVEL 29 | 10 FT. CEILING

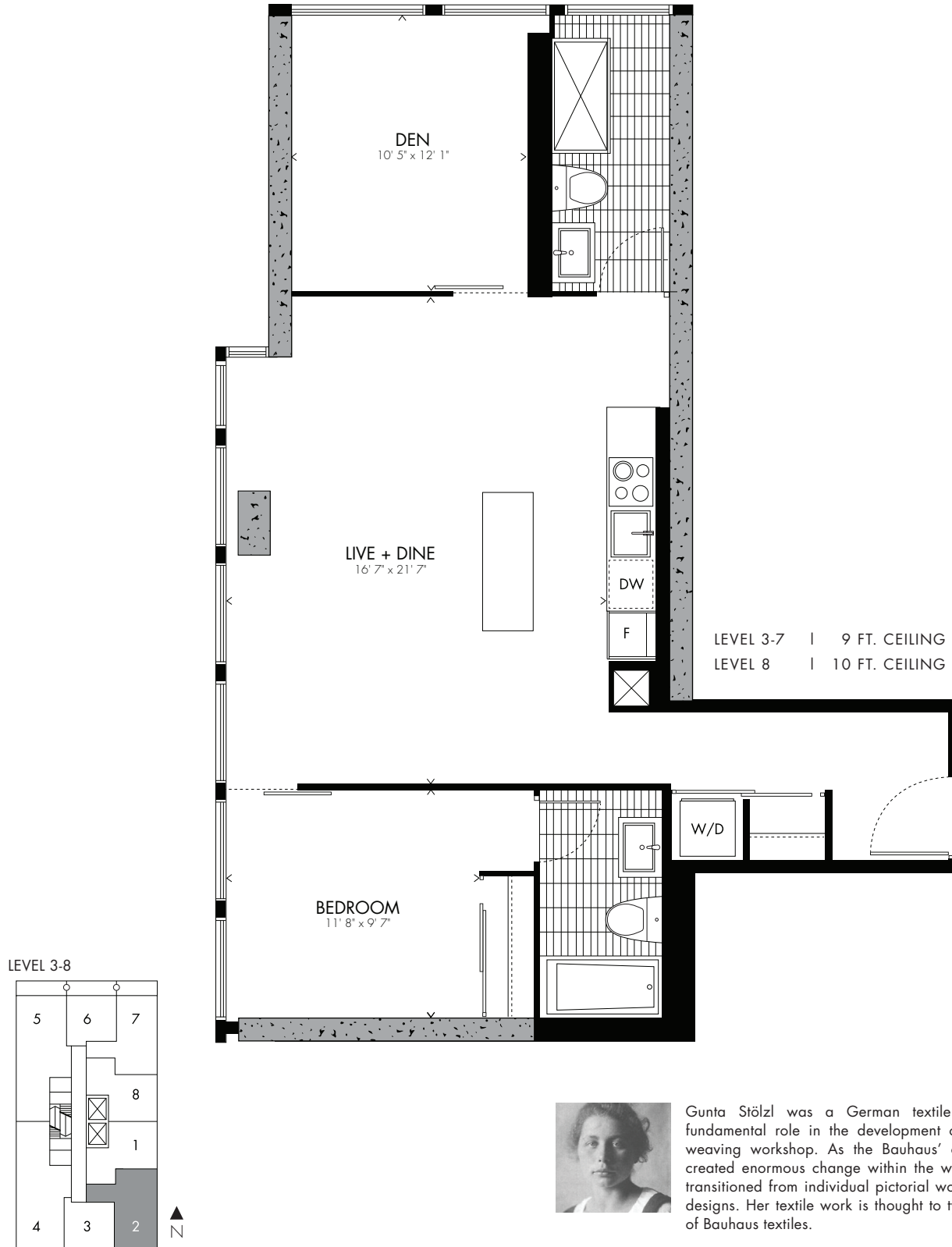


Schawinsky was one of the most protean characters at the Bauhaus. He initiated and inspired many activities at the Bauhaus with a verve that revealed him as a true performer, a modernist dandy and a Bauhaus protagonist par excellence.

BAUHAUS

# Stölzl<sup>02</sup> one bedroom + den

980<sub>sq.ft.</sub>

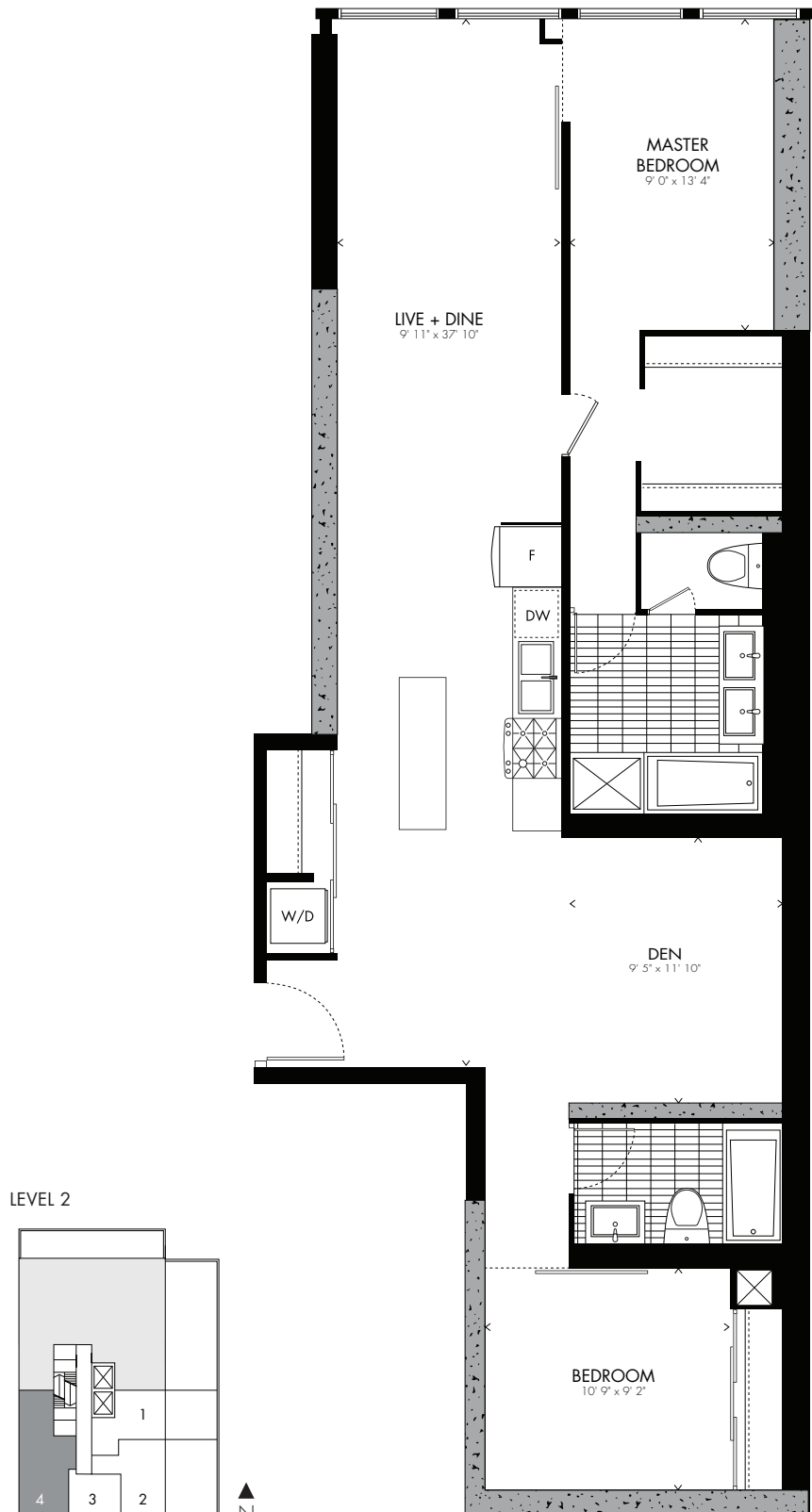


Gunta Stölzl was a German textile artist who played a fundamental role in the development of the Bauhaus school's weaving workshop. As the Bauhaus' only female master she created enormous change within the weaving department as it transitioned from individual pictorial works to modern industrial designs. Her textile work is thought to typify the distinctive style of Bauhaus textiles.

BAUHAUS

# Van Doesburg <sup>04</sup> two bedroom + den

1,333 sq.ft.



All prices, sizes and specifications are subject to change without notice. E.O.E.

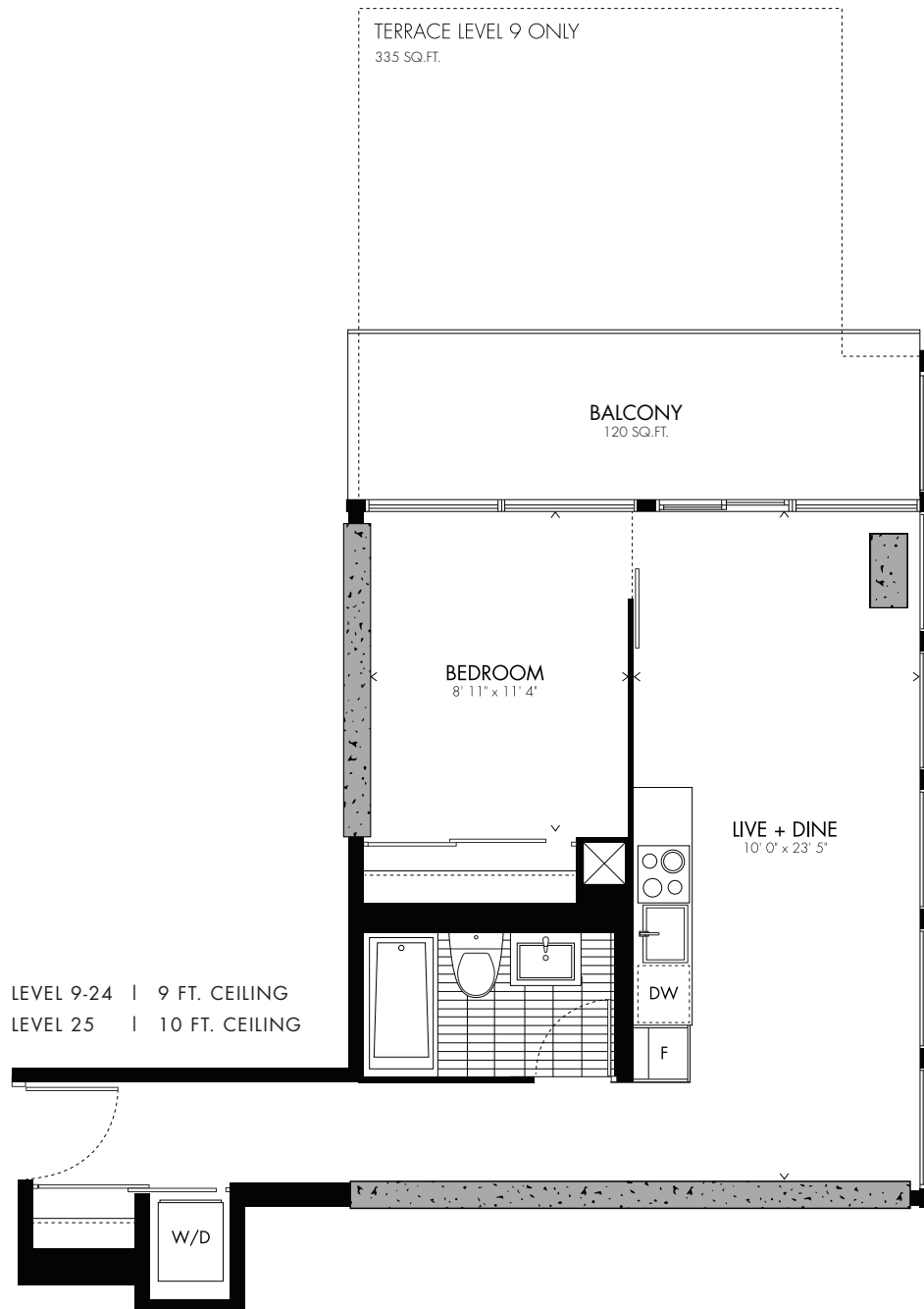


Theo van Doesburg was a Dutch artist, who together with Piet Mondrian established the De Stijl movement. Van Doesburg's most famous work experimented with geometric abstraction and archetypal forms. He was also a prominent architect and writer.

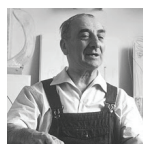
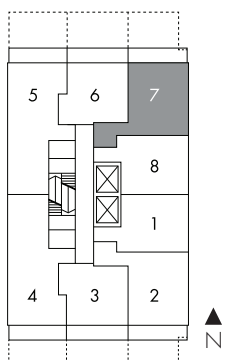
BAUHAUS

# Vantongerloo <sup>07</sup> one bedroom

581 sq.ft.



LEVEL 9-25

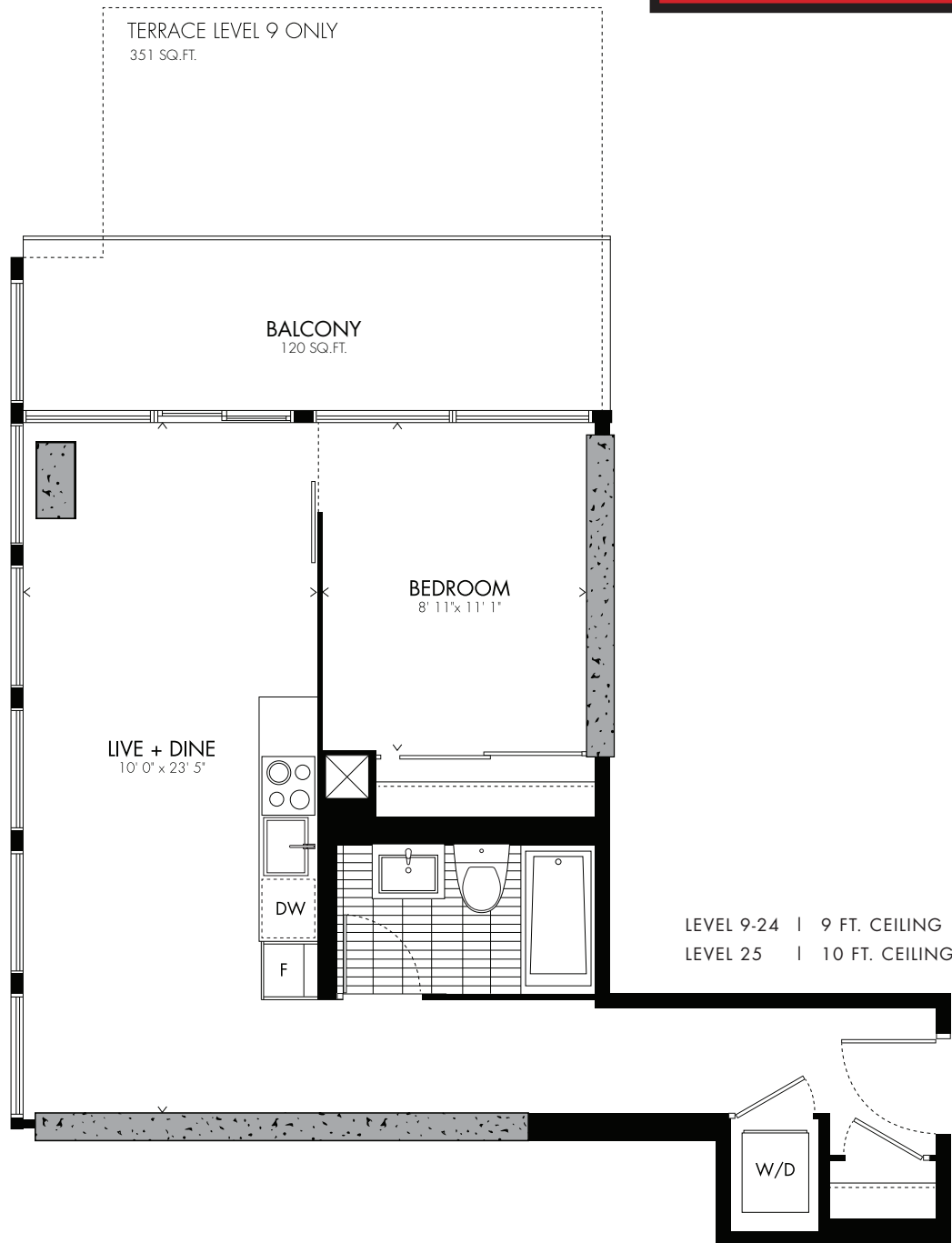


Georges Vantongerloo born in Antwerp Belgium in 1886, died 1965 in Paris. Studied at the Académie des Beau-Arts of Antwerp and Brussels. He was an abstract sculptor, painter, architect and founding member of the De Stijl ("The Style in Dutch) group. Among some of his proponents are Queen Wilhelmina of Netherlands, artist and architect Max Bill, and Piet Mondrian, Bart van der Leek, and Theo van Doesburg who he collaborated with to create De Stijl.

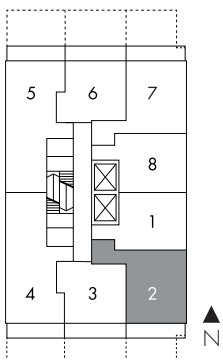
BAUHAUS

# Wagenfeld <sup>02</sup> one bedroom

585 sq.ft.



LEVEL 9-25



All prices, sizes and specifications are subject to change without notice. E.A.O.E.



Wilhelm Wagenfeld was an important German industrial designer and former student of the Bauhaus art school. He designed glass and metal works for the Jenaer Glaswerk Schott & Gen., the Vereinigte Lausitzer Glaswerke in Weißwasser, Rosenthal, Braun GmbH and WMF. Some of his designs are still produced to this day.

BAUHAUS