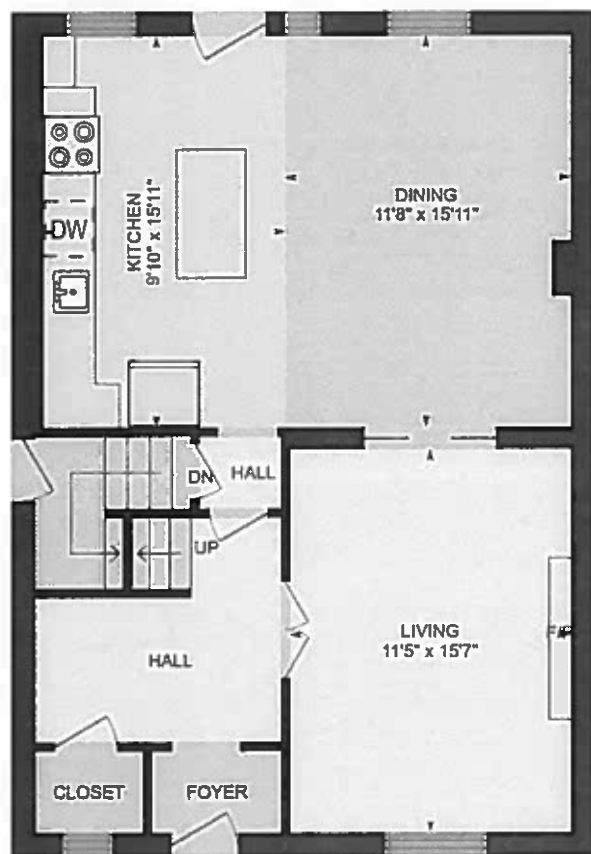
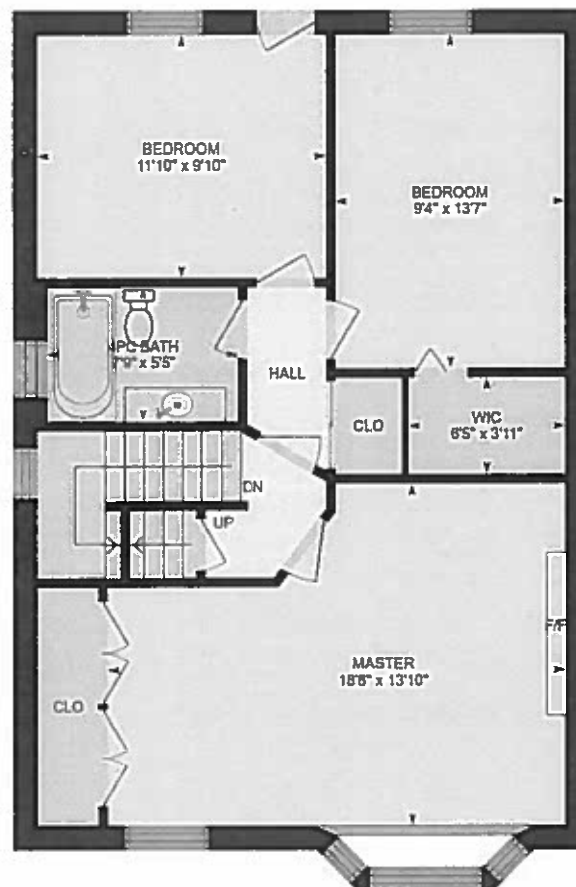


# 189 Havelock St, Toronto, ON

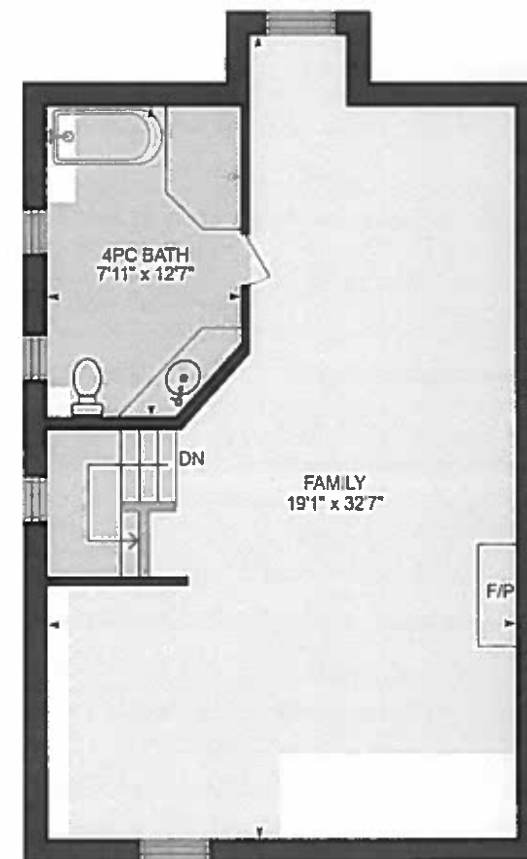
Main Building: Total Exterior Area Above Grade 2257 sq ft



**Main Floor**  
Exterior Area 815 sq ft



**2nd Floor**  
Exterior Area 802 sq ft



**3rd Floor**  
Exterior Area 640 sq ft

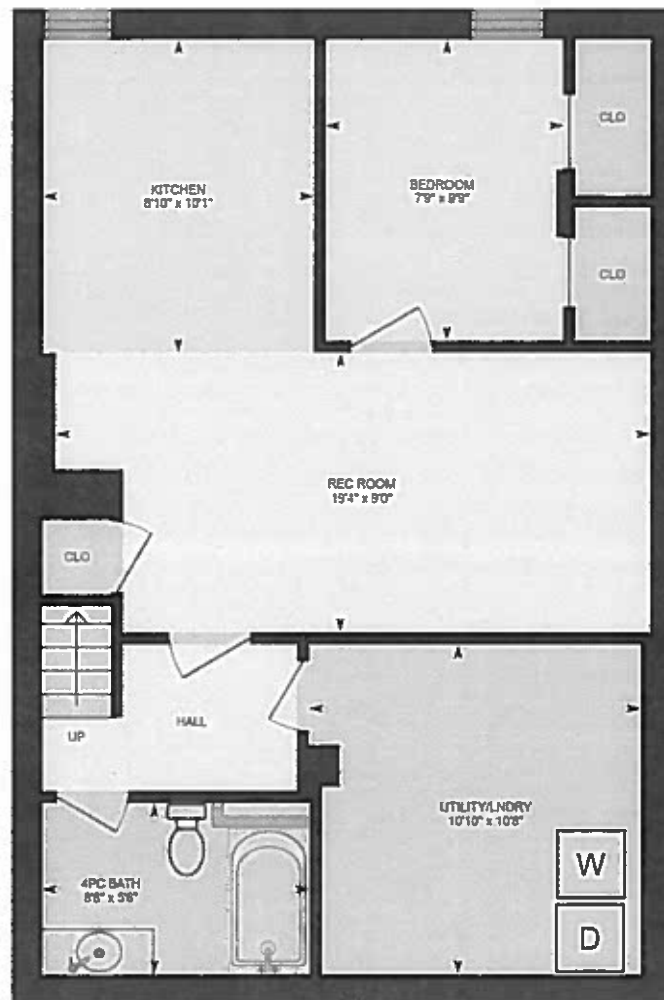
0 3 6  
ft

White regions are excluded from total floor area. All room dimensions and floor areas must be considered approximate and are subject to independent verification. For method of measurement please see <https://youriguide.com/measure/>.

PREPARED: Aug, 2018

# 189 Havelock St, Toronto, ON

## Main Building



Basement (Below Grade)  
Exterior Area 696 sq ft

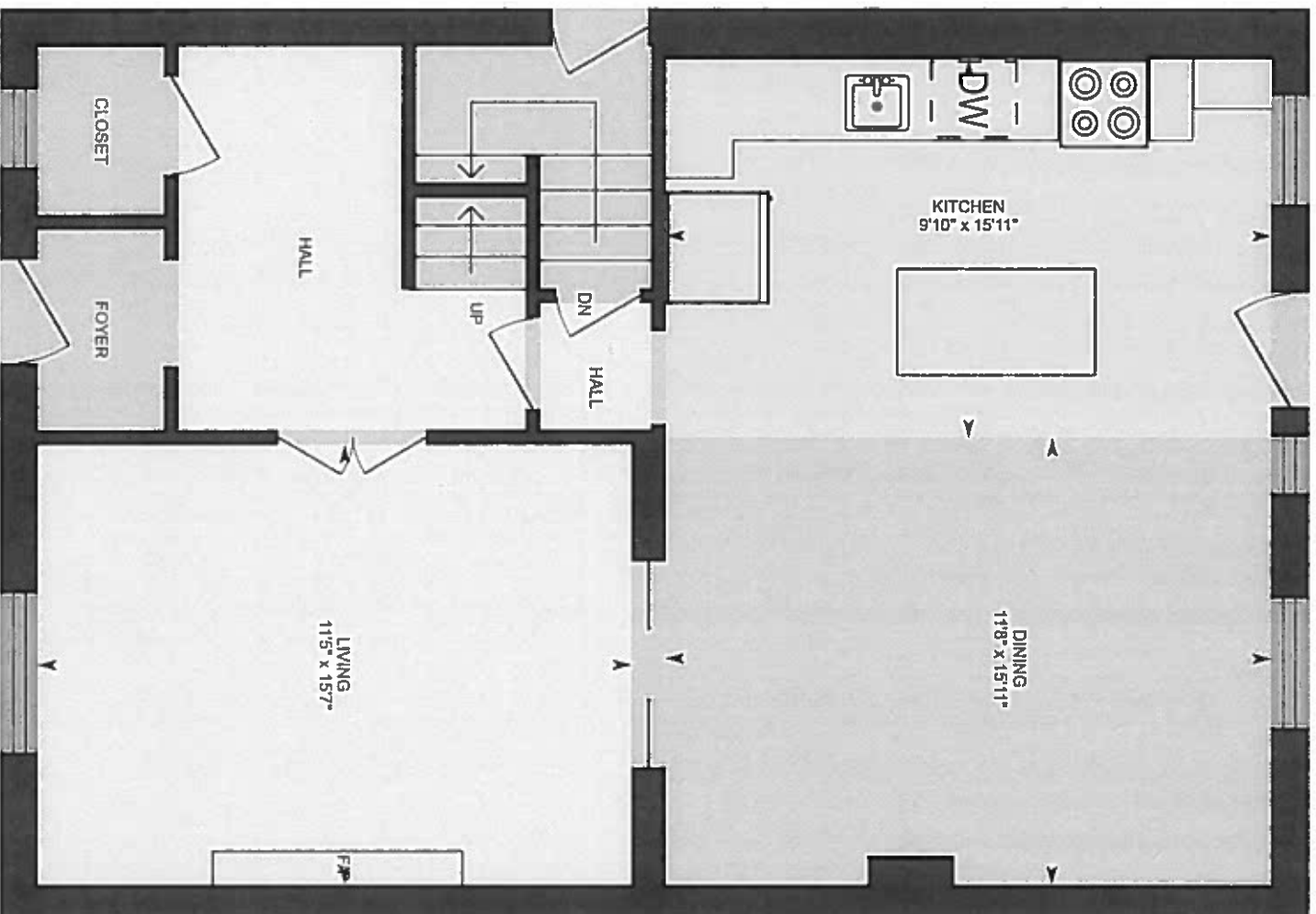


PREPARED: Aug, 2018

White regions are excluded from total floor area. All room dimensions and and floor areas must be considered approximate and are subject to independent verification. For method of measurement please see <https://youriguide.com/measure/>.

# 189 Havelock St, Toronto, ON

Main Floor    Total Exterior Area 815 sq ft  
Total Interior Area 702 sq ft



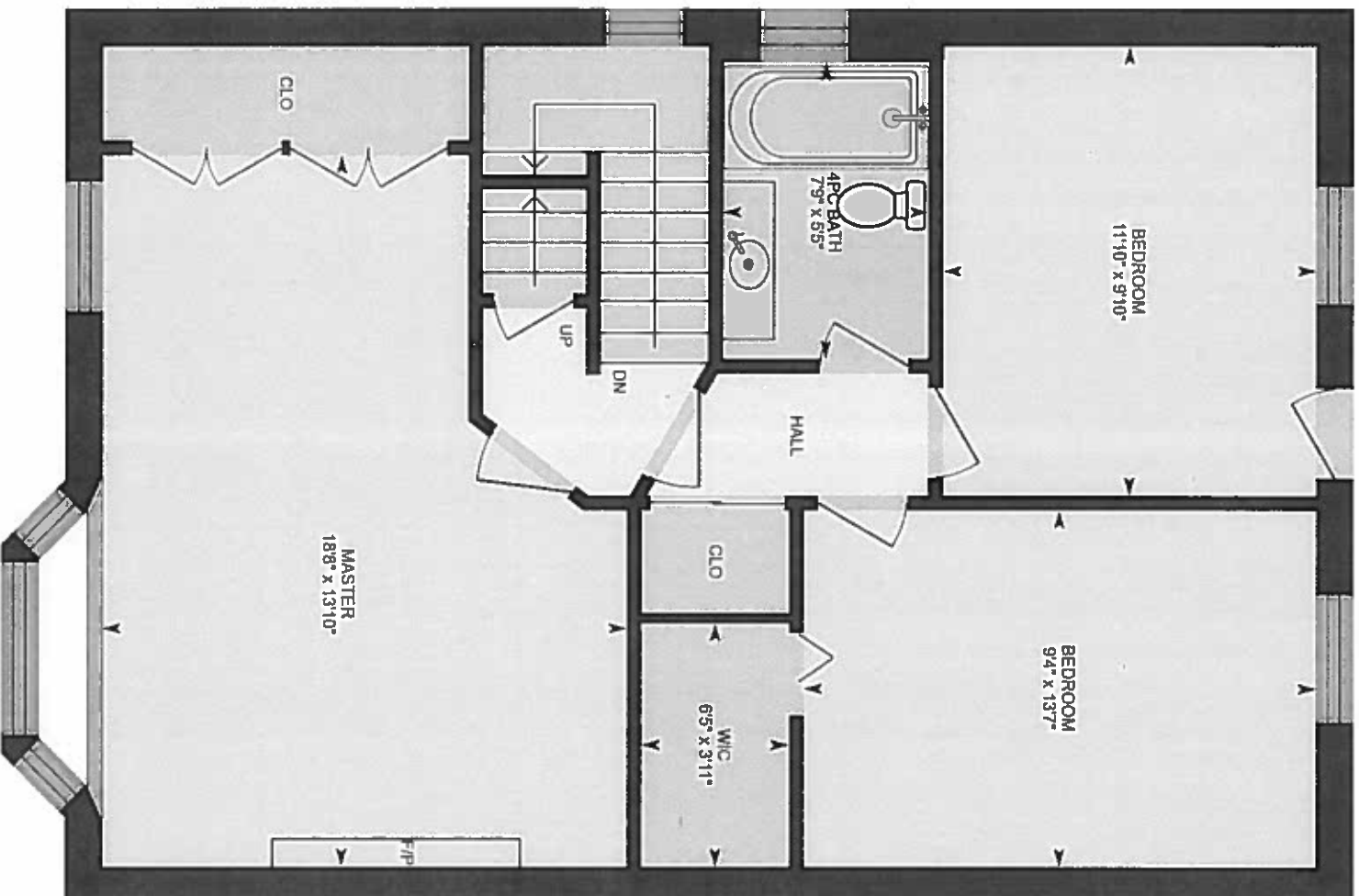
PREPARED: Aug, 2018

White regions are excluded from total floor area. All room dimensions and and floor areas must be considered approximate and are subject to independent verification. For method of measurement, please see <https://xoutguide.com/measure/>.



# 189 Havelock St, Toronto, ON

**2nd Floor**    Total Exterior Area 802 sq ft  
Total Interior Area 690 sq ft



0 2 4  
ft

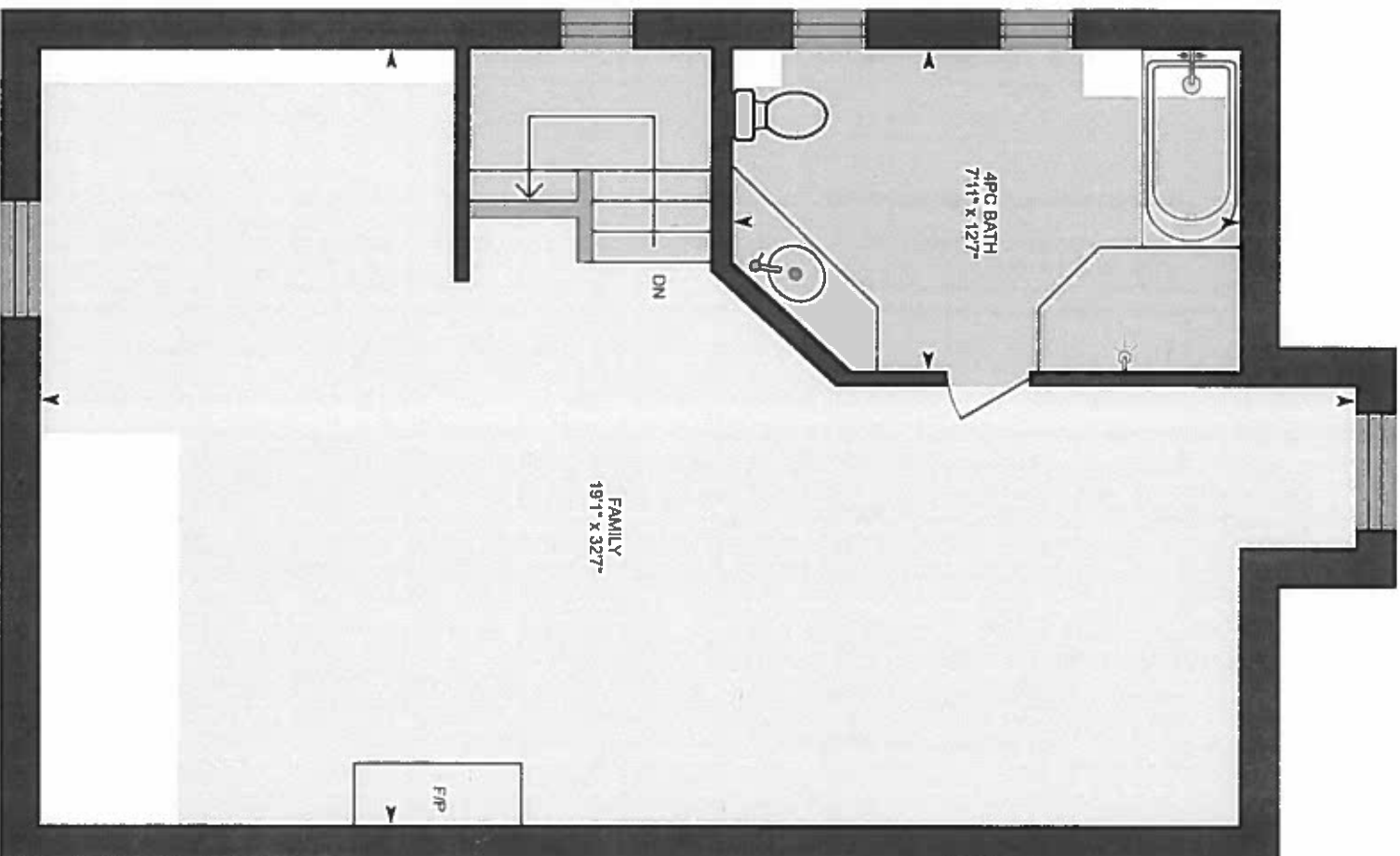
PREPARED: Aug. 2018

White regions are excluded from total floor area. All room dimensions and and floor areas must be considered approximate and are subject to independent verification. For method of measurement, please see <https://youtaguide.com/measure/>.



# 189 Havelock St, Toronto, ON

3rd Floor    Total Exterior Area 640 sq ft  
Total Interior Area 530 sq ft



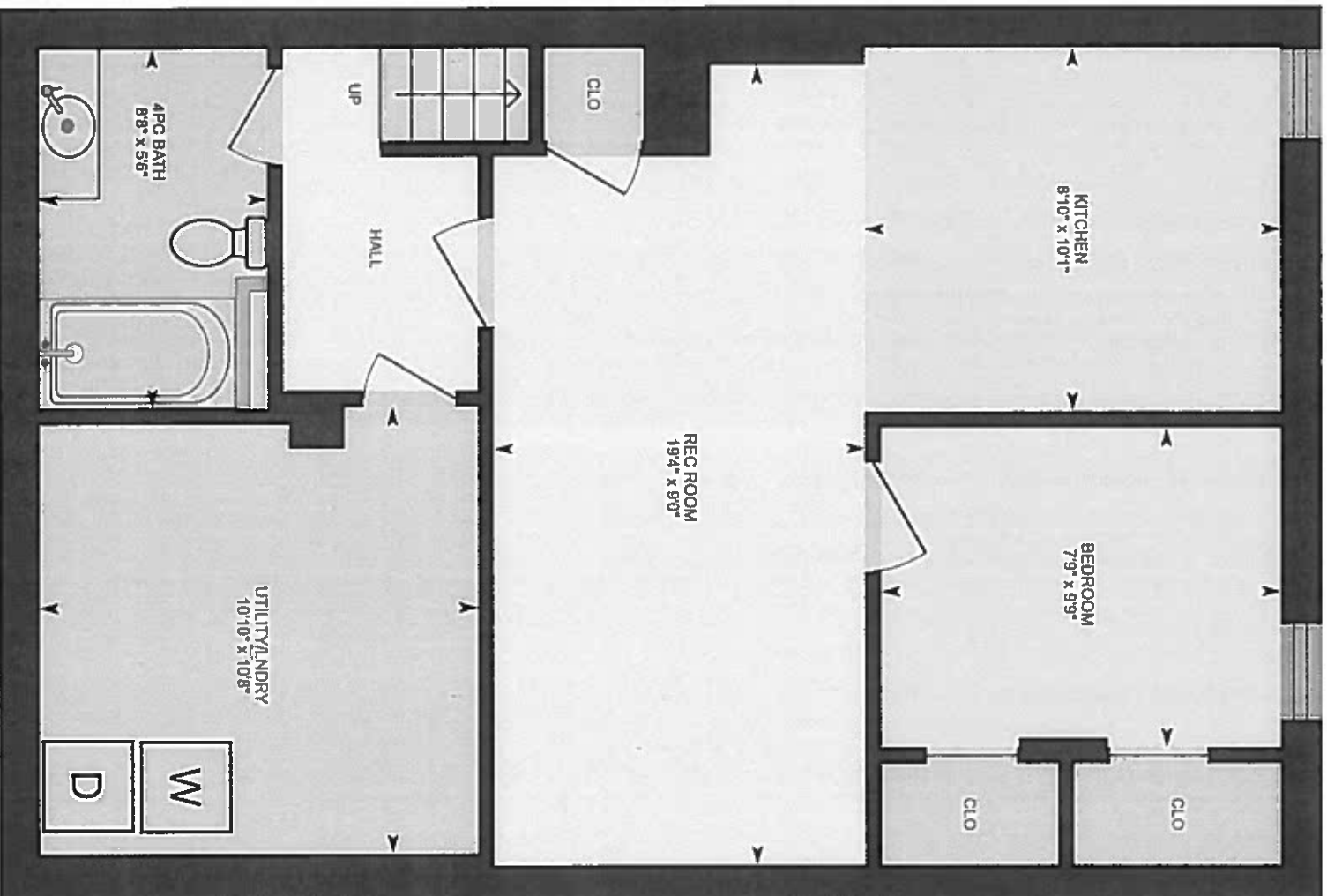
PREPARED: Aug, 2018



White regions are excluded from total floor area. All room dimensions and and floor areas must be considered approximate and are subject to independent verification. For method of measurement, please see <https://youduguide.com/measure/>.

# 189 Havelock St, Toronto, ON

**Basement**    Total Exterior Area 696 sq ft  
Total Interior Area 592 sq ft



PREPARED: Aug, 2018



While regions are excluded from total floor area. All room dimensions and and floor areas must be considered approximate and are subject to independent verification. For method of measurement, please see <https://youguides.com/measure/>.