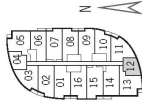
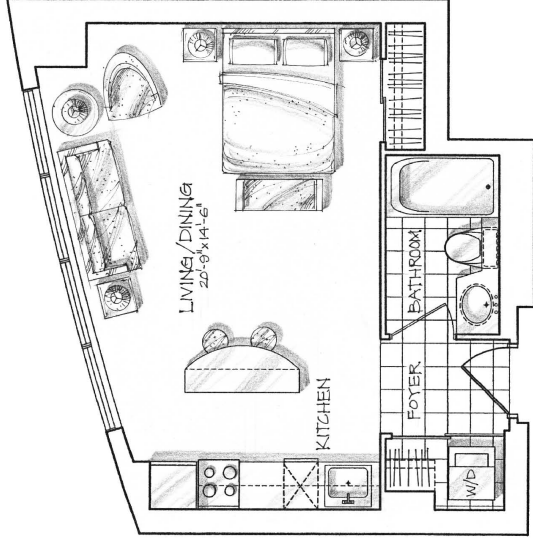


THE ELDERWOOD

407 SQ. FT.



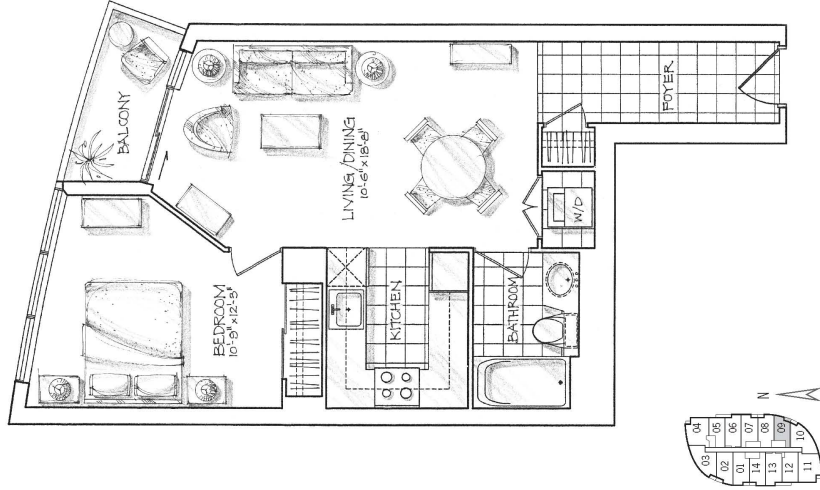
Floor's 7-16

All views are subject to change without notice. The area reserved for the unit is shown in black. All dimensions are in feet and inches.

BLACK KEYLINE DOES NOT PRINT

THE FOREST HILL

581 SQ. FT.



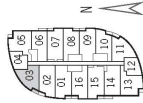
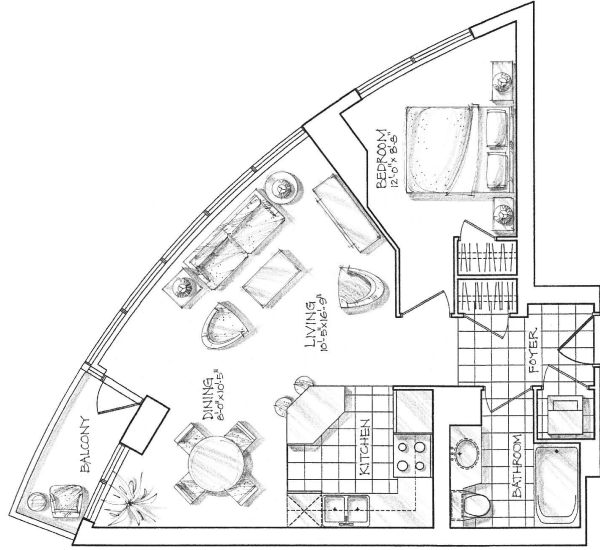
Floors 25-34

All views are illustrative and not to scale. Dimensions are approximate. The area reserved for the unit is shown in yellow. All other areas are reserved for the building owner.

BLACK KEYLINE DOES NOT PRINT

THE YORKVILLE

632 SQ. FT.



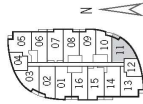
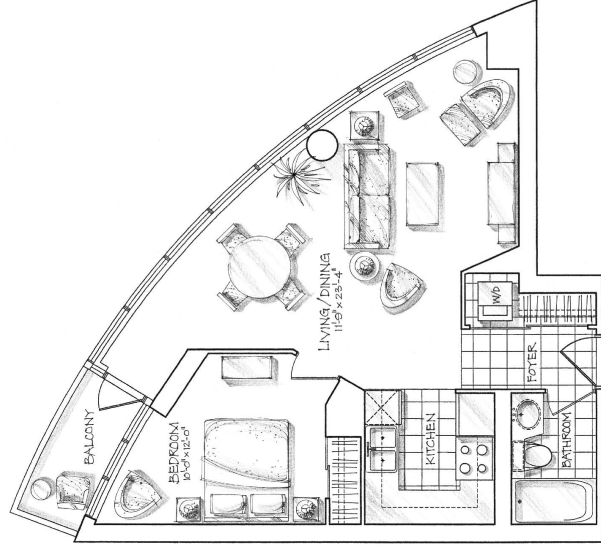
Floor's 7-16

All views are subject to change without notice. Drawings are not to scale. All dimensions are in feet and inches. All dimensions are to the center of the wall unless otherwise noted.

BLACK KEYLINE DOES NOT PRINT

THE ROSEDALE

637 SQ. FT.



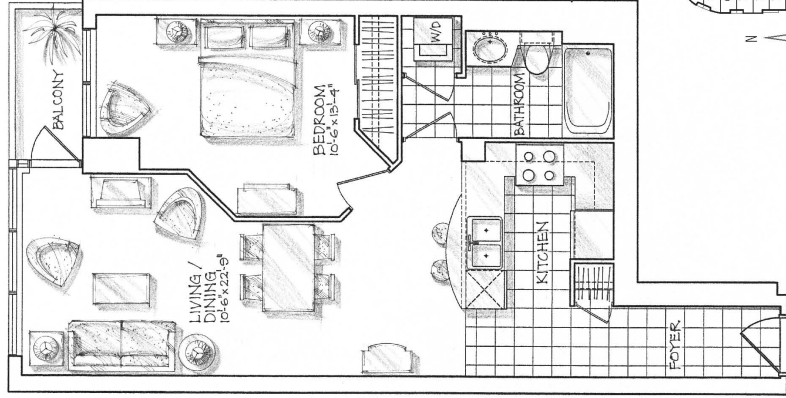
Floor's 7-16

All views are for illustrative purposes only. Dimensions are approximate. Drawings are not to scale. All dimensions are in feet and inches. All dimensions are to the center of the unit unless otherwise noted.

BLACK KEYLINE DOES NOT PRINT

THE GLENROSE

651 SQ. FT.

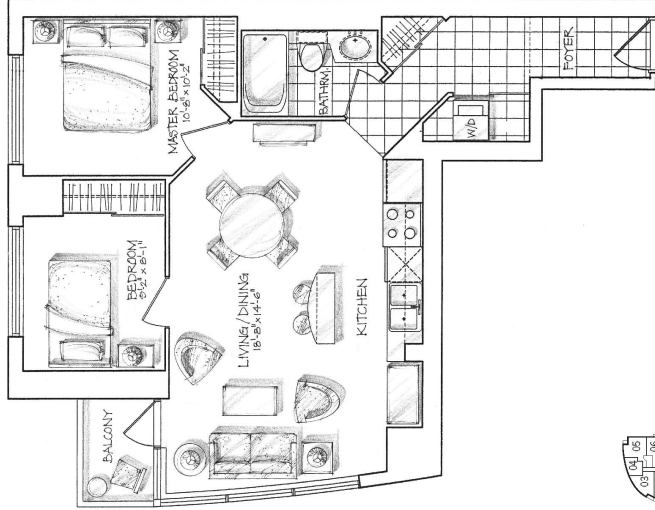


Floor's 25-34
All sizes and labels are approximate. For more information, please contact the sales office.
Recorded with DMS# 20180227. All sizes are subject to change without notice.

BLACK KEYLINE DOES NOT PRINT

THE ESPLANADE

692 SQ. FT.



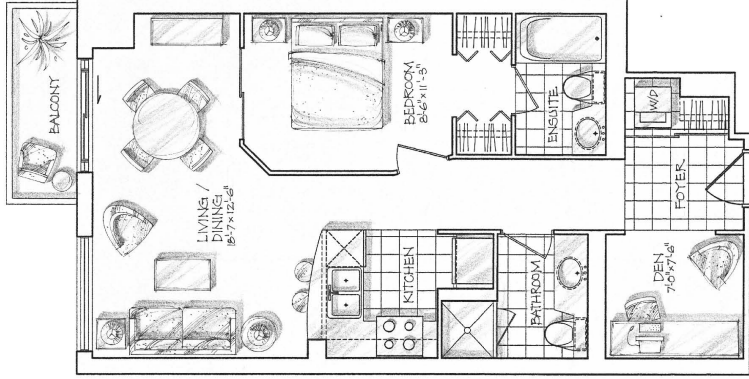
Floor's 7-16

All sizes are subject to change without notice. The area reserved for the kitchen is 10'0" x 8'0". All other areas are 10'0" x 8'0".

BLACK KEYLINE DOES NOT PRINT

THE NASHVILLE

692 SQ. FT.



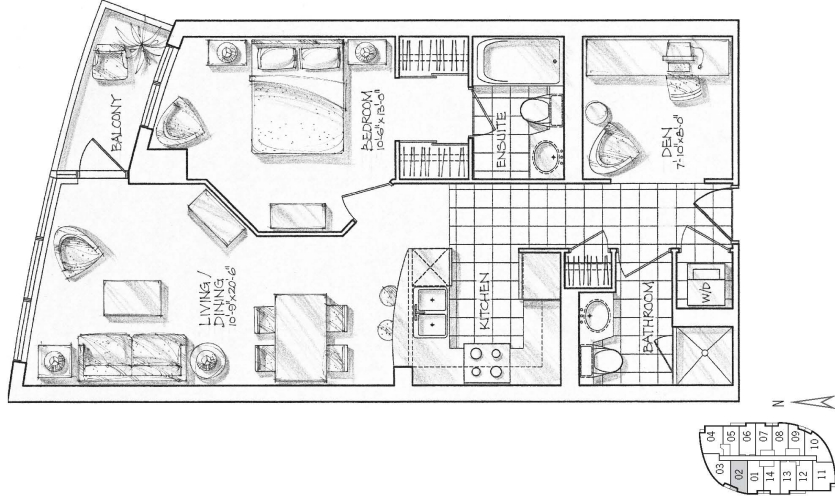
Floors 25-34

Always refer to the floor plan as a guide only. The area represented by this floor plan is for informational purposes only. All dimensions are approximate and may vary from floor to floor.

BLACK KEYLINE DOES NOT PRINT

THE PARKLANE

704 SQ. FT.



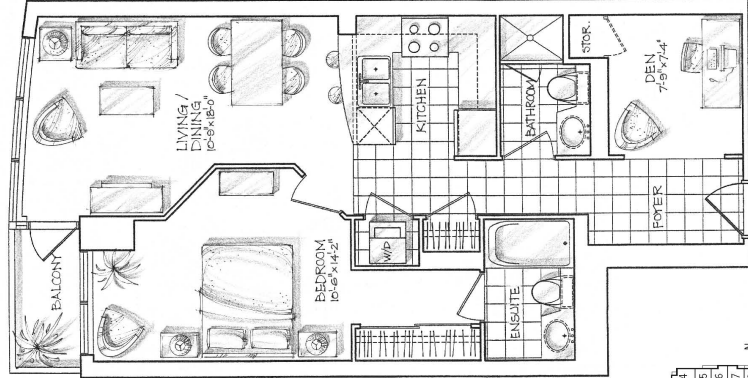
Floor's 25-34

All areas are approximate measurements. Drawn to scale. For more information, contact the sales office at 10000 Parklane Blvd, Dallas, TX 75244. All areas are subject to change without notice.

BLACK KEYLINE DOES NOT PRINT

THE BEDFORD

718 SQ. FT.

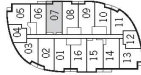
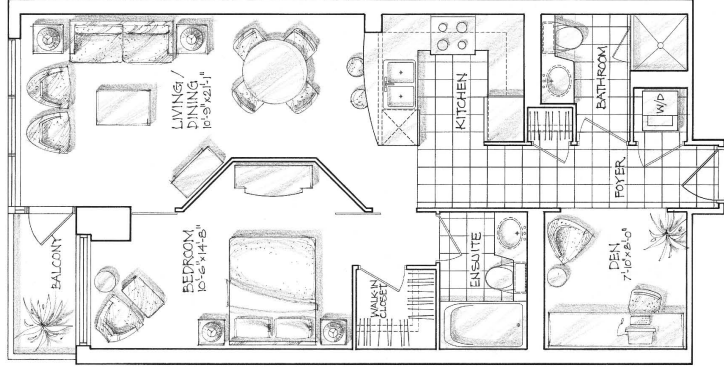


All views are illustrative and not to scale. The area reserved for the unit is shown in black. All dimensions are approximate. All dimensions are in feet and inches. All dimensions are in feet and inches. All dimensions are in feet and inches.

BLACK KEYLINE DOES NOT PRINT

THE WELLINGTON

737 SQ. FT.



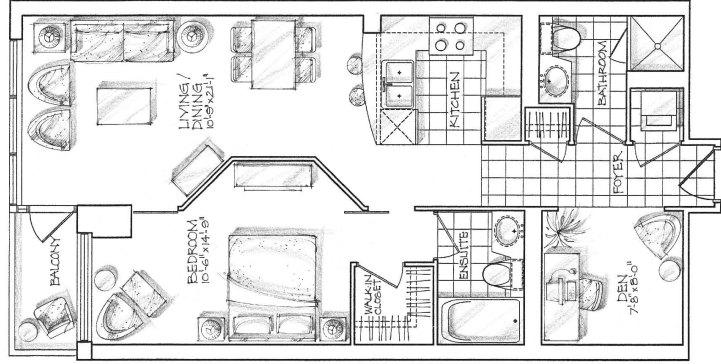
Floor's 7-16

All views and details are illustrative in nature only. They are not contract documents. For more information, please contact the architect at 1000 West 10th Street, Suite 1000, Vancouver, BC V6H 1T6.

BLACK KEYLINE DOES NOT PRINT

THE BROOKDALE

738 SQ. FT.



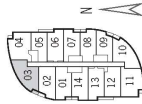
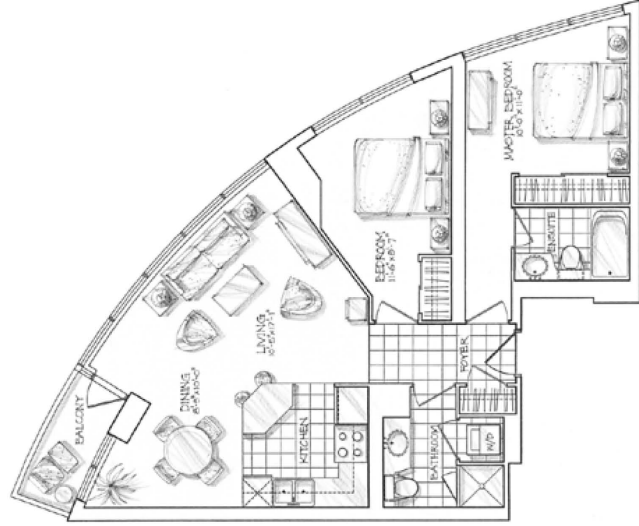
Floor's 25-34

All dimensions are approximate. For any exact dimensions, please refer to the architectural drawings. All measurements are taken from the center of the unit.

BLACK KEYLINE DOES NOT PRINT

THE MADISON

852 SQ. FT.



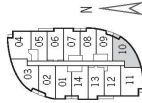
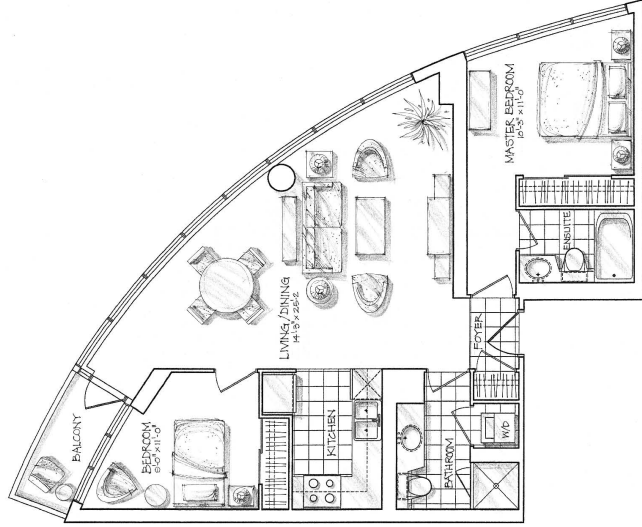
Floor's 25-34

All sizes are approximate. Dimensions are approximate. Draw area reserved for
contractor. All floor plans subject to change without notice. See floor plan for exact details.

BLACK KEYLINE DOES NOT PRINT

THE DUNVEGAN

85.5 SQ. FT.



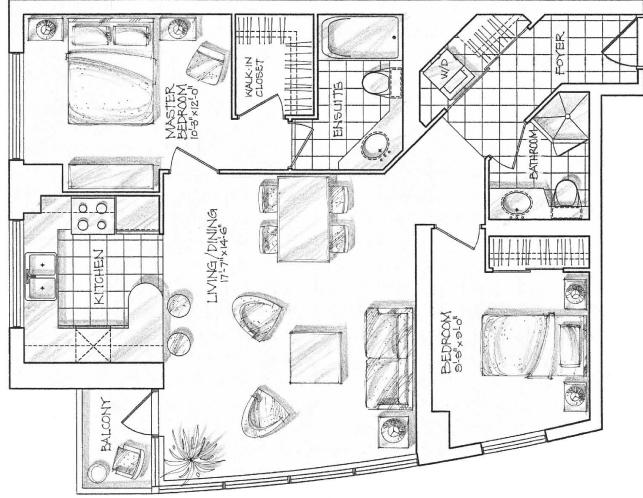
Floors 25-34

ALL DIMENSIONS ARE APPROXIMATE. DIMENSIONS ARE SUBJECT TO CHANGE WITHOUT NOTICE. SEE ARCHITECTURAL DRAWINGS FOR FURTHER DETAILS. SEE ARCHITECTURAL DRAWINGS FOR FURTHER DETAILS.

BLACK KEYLINE DOES NOT PRINT

THE LONSDALE

881 SQ. FT.



Floors 25-34

All views are approximate and for illustrative purposes only. They are not intended to be used for construction. All dimensions are approximate. All views are subject to change without notice.

BLACK KEYLINE DOES NOT PRINT