

# M17

## 1 BEDROOM + STUDY

INDOOR LIVING SPACE: 721 SQ.FT

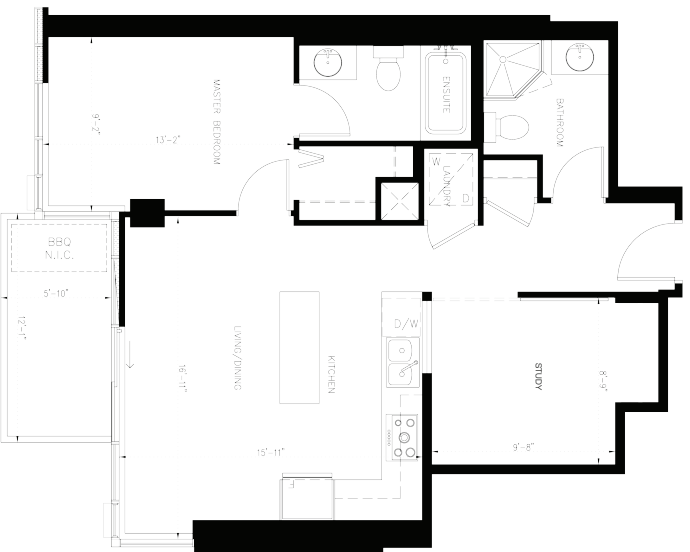
OUTDOOR LIVING SPACE: 160 SQ.FT

COMBINED LIVING SPACE: 881 SQ.FT

SUITE NO. \_\_\_\_\_



NOTE: Dimensions, specifications, layout and materials are approximate only and are subject to change. Actual results for area may vary from the stated floor area.



# M23A

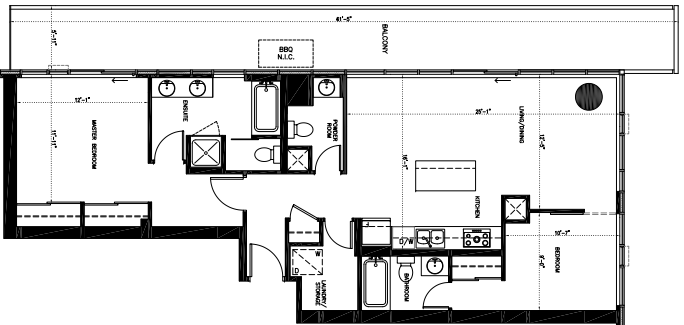
INDOOR LIVING SPACE: 763 SQ. FT.  
 OUTDOOR LIVING SPACE: 72 SQ. FT.  
 COMBINED LIVING SPACE: 835 SQ. FT.

SUITE NO. \_\_\_\_\_



NOTE: Drawings, specifications, layout and materials are approximate only and are subject to change. Actual usable floor area may vary from the salable floor area.





## M22

### 2 BEDROOM

INDOOR LIVING SPACE: 1114 SQ.FT

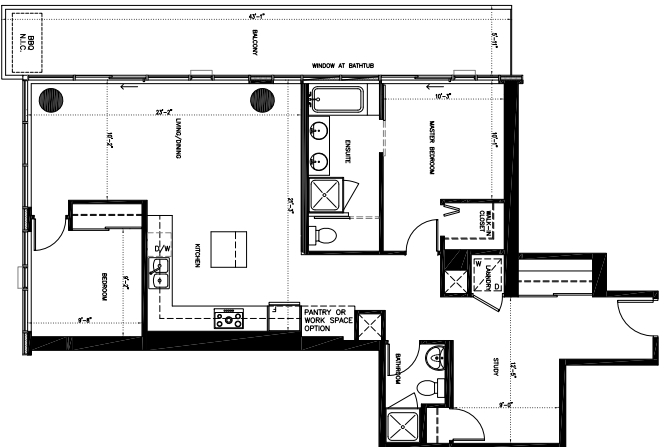
OUTDOOR LIVING SPACE: 363 SQ.FT

COMBINED LIVING SPACE: 1477 SQ.FT

SUITE NO: \_\_\_\_\_



NOTE: Dimensions, specifications, layout and materials are approximate only and are subject to change. Actual usable floor area may vary from the stated floor area.



# M21

## 2 BEDROOM + STUDY

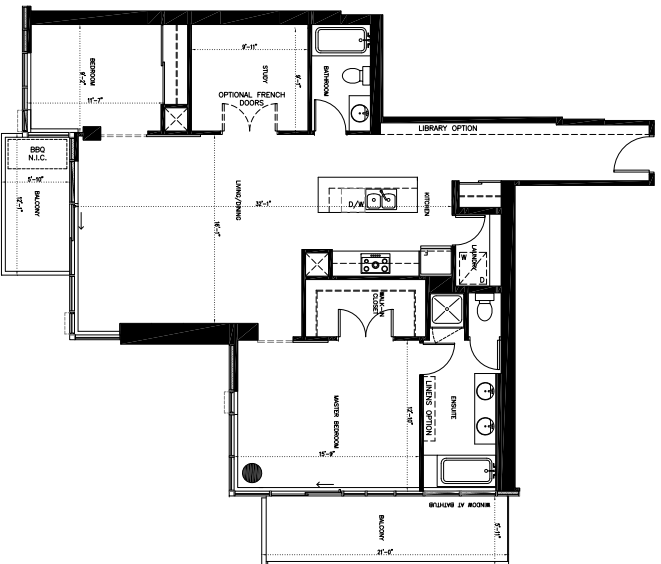
INDOOR LIVING SPACE: 1154 SQ.FT

OUTDOOR LIVING SPACE: 286 SQ.FT

COMBINED LIVING SPACE: 1440 SQ.FT



NOTE: Measurements, specifications, layout and materials are approximate only and are subject to change. Actual results for areas may vary from the stated floor area.



# M23

## 2 BEDROOM + STUDY

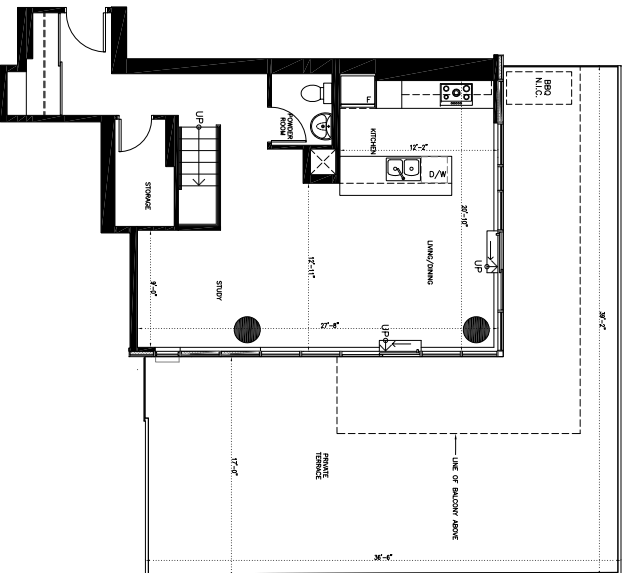
INDOOR LIVING SPACE: 1398 SQ.FT

OUTDOOR LIVING SPACE: 195 SQ.FT

COMBINED LIVING SPACE: 1593 SQ.FT



NOTE: Dimensions, specifications, layout and materials are approximate only and are subject to change. Actual double door area may vary from the stated floor area.



# MX2 (LOWER)

2 BEDROOM + STUDY

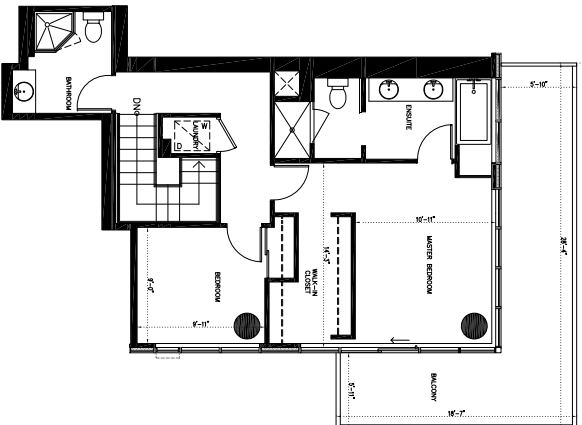
INDOOR LIVING SPACE: 775 SQ.FT. (TOTAL INDOOR: 480 SQ.FT.)

OUTDOOR LIVING SPACE: 898 SQ.FT. (TOTAL OUTDOOR: 1137 SQ.FT.)

COMBINED LIVING SPACE: 2887 SQ.FT.



NOTE: These and specifications are subject to change without notice. E.S.O.S. Actual usable floor space may vary from the stated floor area. All illustrations are artist's concept. Furniture shown is not included in purchase price. The unit shown may be the reverse of the unit purchased.



## MX2 (UPPER)

### 2 BEDROOM + STUDY

INDOOR LIVING SPACE: 725 SQ.FT. (TOTAL INDOOR: 1450 SQ.FT.)

OUTDOOR LIVING SPACE: 238 SQ.FT. (TOTAL OUTDOOR: 1137 SQ.FT.)

COMBINED LIVING SPACE: 2587 SQ.FT.



NOTE: Photos and specifications are subject to change without notice. E.A.O.B. Actual usable floor space may vary from the stated floor area. All dimensions are approximate. Floor plans shown are not included in purchase price. The unit shown may be the reverse of the unit purchased.